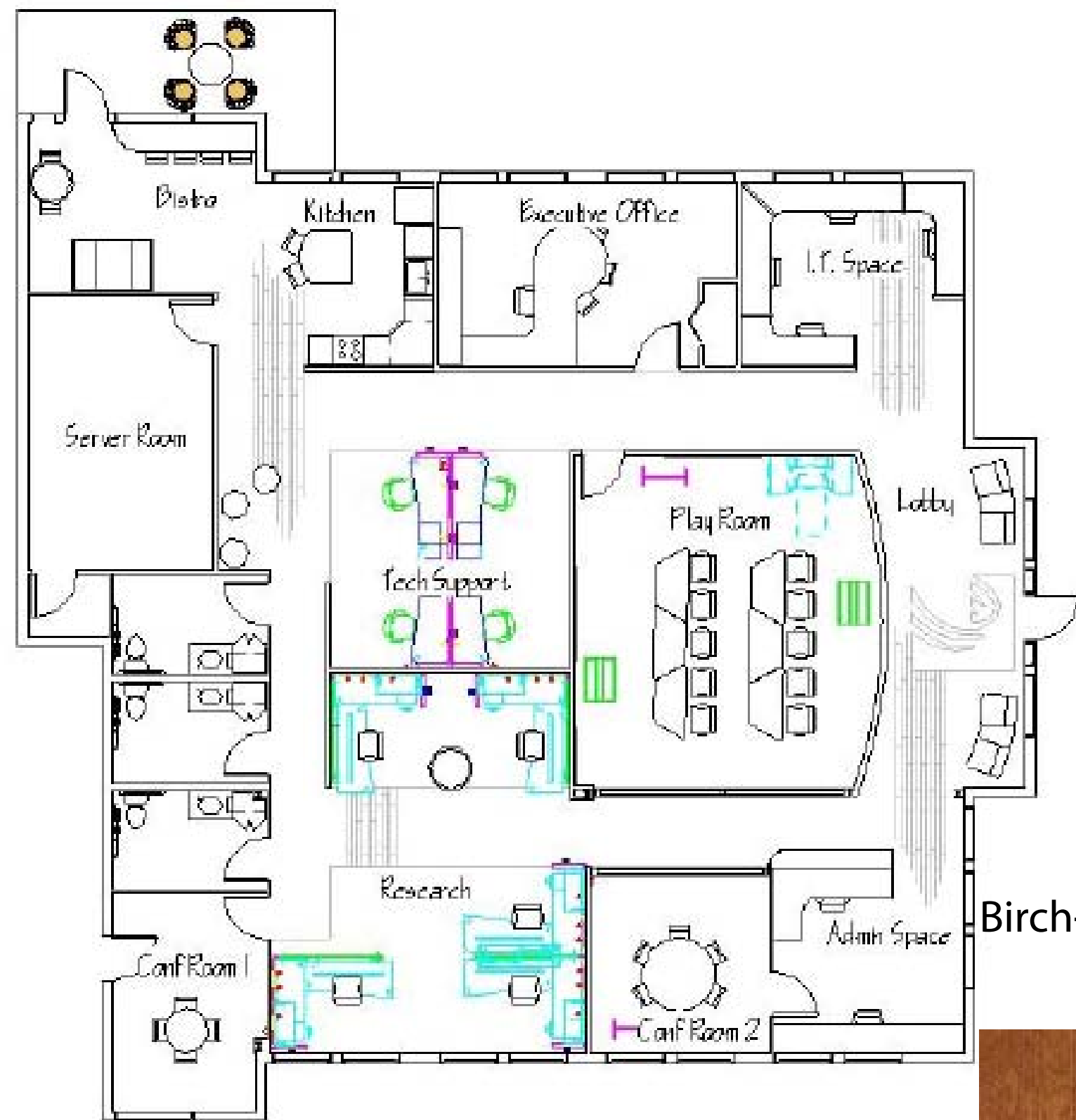


# Luther Consulting, LLC

Luther Consulting is a technology based company so a motherboard represents not only the technology aspect but the collaborative work environment of the company. The motherboard of a computer allows all components of the computer to function together as a unit. This represents our office layout because, although it may seem like each section is separated, it allows for interaction and collaboration which helps the office function properly. There are many geometric and organic shapes incorporated into a motherboard that are represented in our plan. The wave ceiling tiles denote the energy that flows through the computer that is generated from the motherboard. We have incorporated metal taken from the wires that connect all the components within the computer and motherboard. These wires also inspired the color scheme we made for the space. The elements taken from the motherboard give a more industrial feel to the space but with the integration of the wood elements give the space a more comfortable, home like feel.



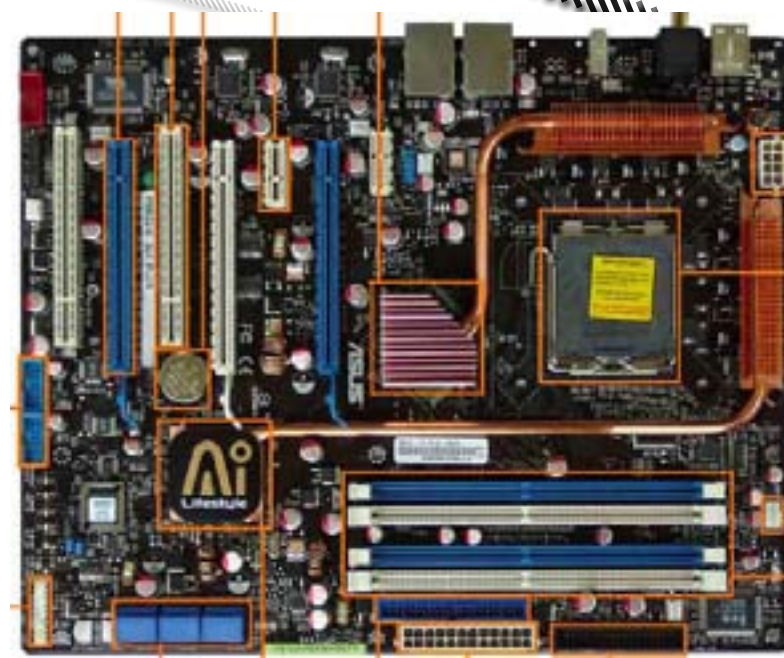
## Floor Plan

### Armstrong Wood Floors

Birch- Cinnabark

Heritage Pointe-  
Potamac

Birch- Derby



-- Upholstery: Uptown  
(DesignTex) Primary  
Colors

### Campfire

-- Maple wood legs  
-- Upholstery: Uptown  
(DesignTex) Moonlit

HIGH TABLE  
(FREESTANDING, END  
OF RUN, OR GANGED)

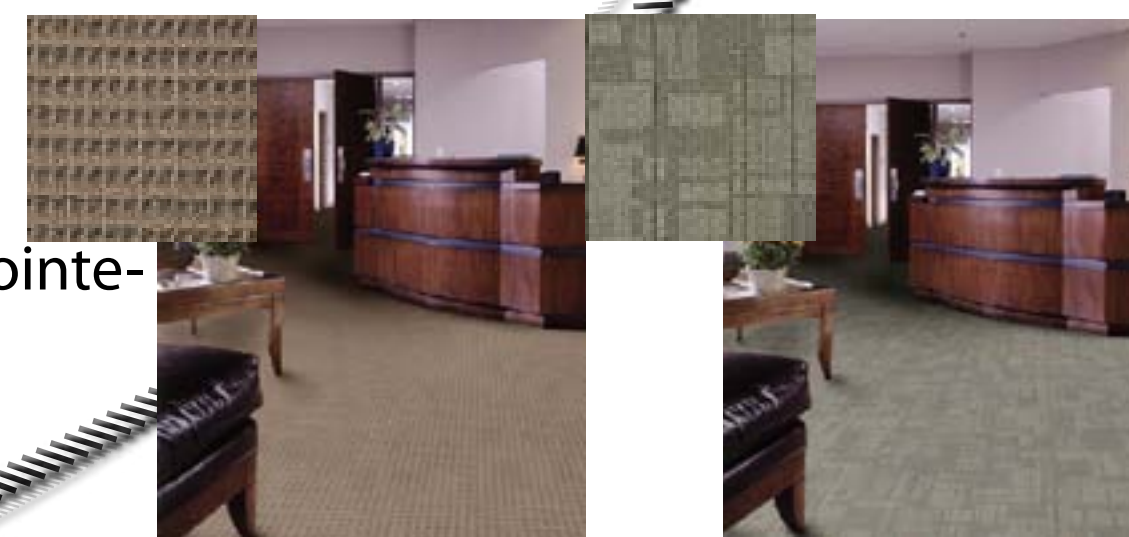
STRAIGHT CHAIR

### Circa Modular



### Answer Workstations

### Shaw Commerical Carpet



## Furniture & Finishes

Malt 5066  
Graphite 5092  
Wasabi 5090  
Tumeric 5096  
Tangerine 5094  
Scarlet 5095

-- Translucent 3D knit  
back  
-- Adjustable Arms  
-- Platinum Base

Blue Jay 5098



### Think Task Chair

-- Mesh back  
-- Platinum

Sable AR09



### Reply- 4 Leg Chair

-- Blue and Anthracite  
Gray  
-- Chrome Ring



### Enea Lottus Stool

-- Platinum Finish  
-- Roller base

Maya Blue 5020



### i2i Lounge Chair

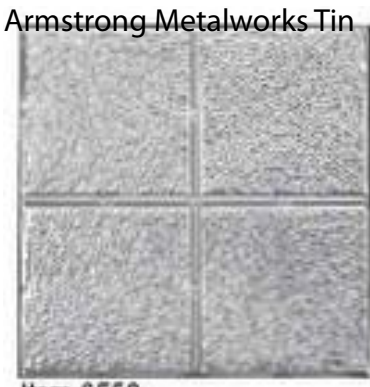
Fuse BI- Blend



Skyfold Mirage Glass Walls



Armstrong Serpentina Ceiling Panels: Gun Metal Finish



Armstrong Woodworks Concealed



ArmstrongSoundscapes Panels



Armstrong Filaments Lay-in Ceiling



Perforated Wood overlayed on metal wall for lobby with Luther Consulting name and television



Wallpaper in Executive Office

# Lighting

1



2



3



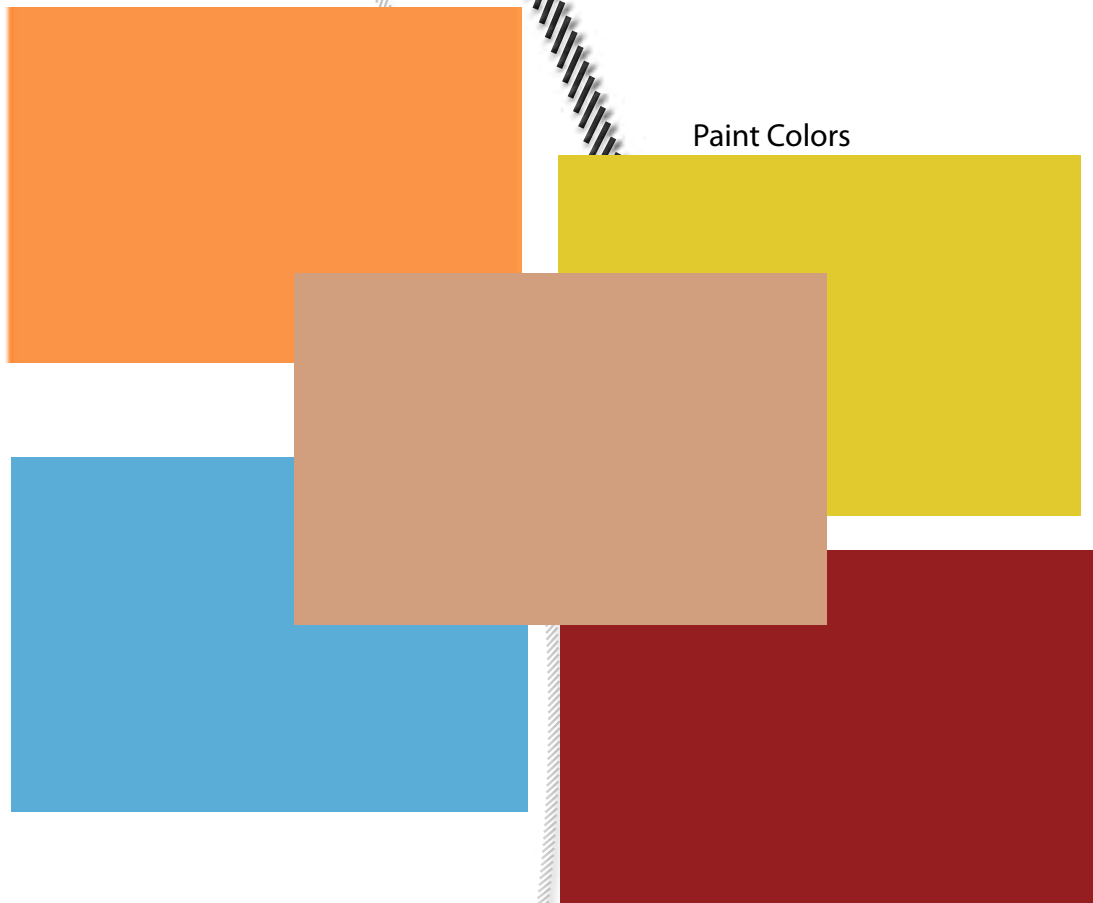
4



5

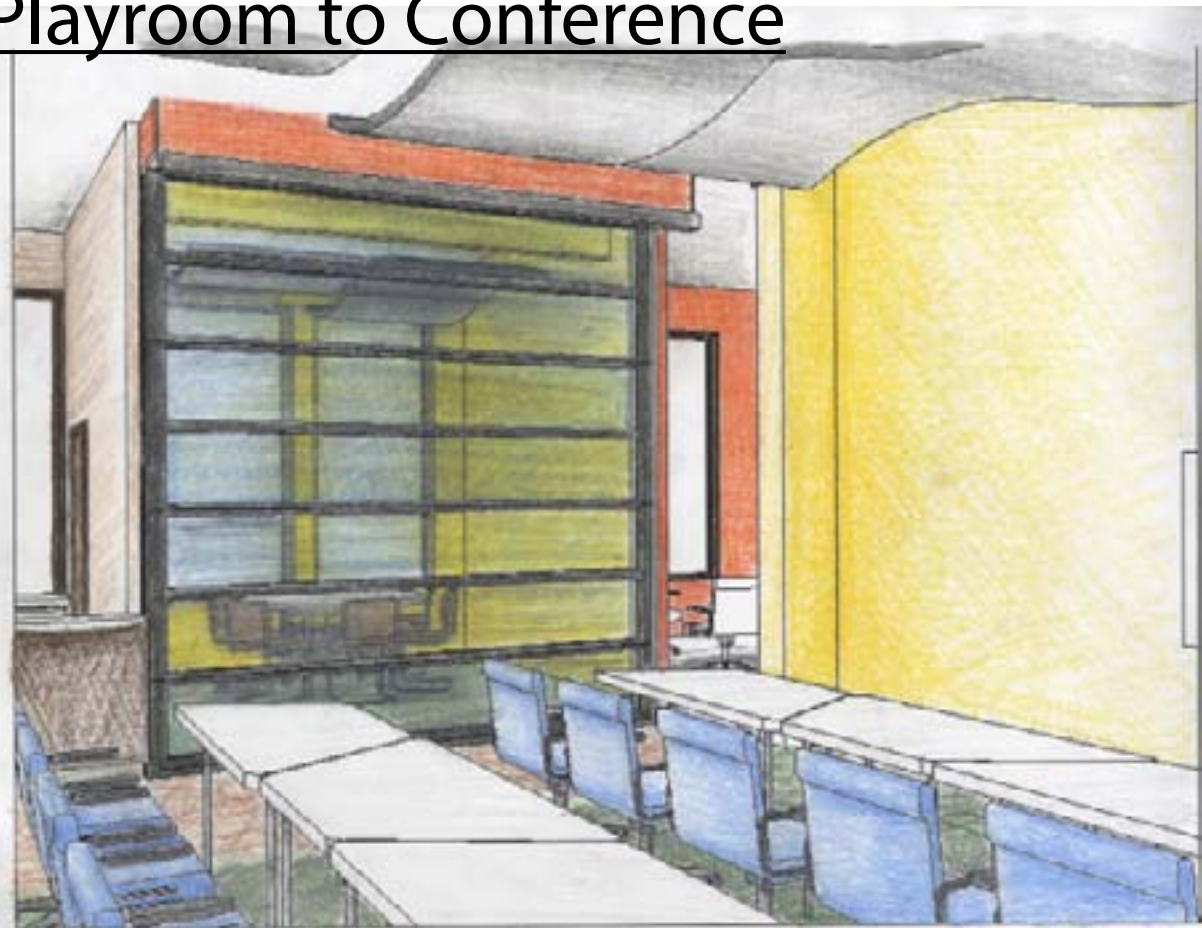


Paint Colors



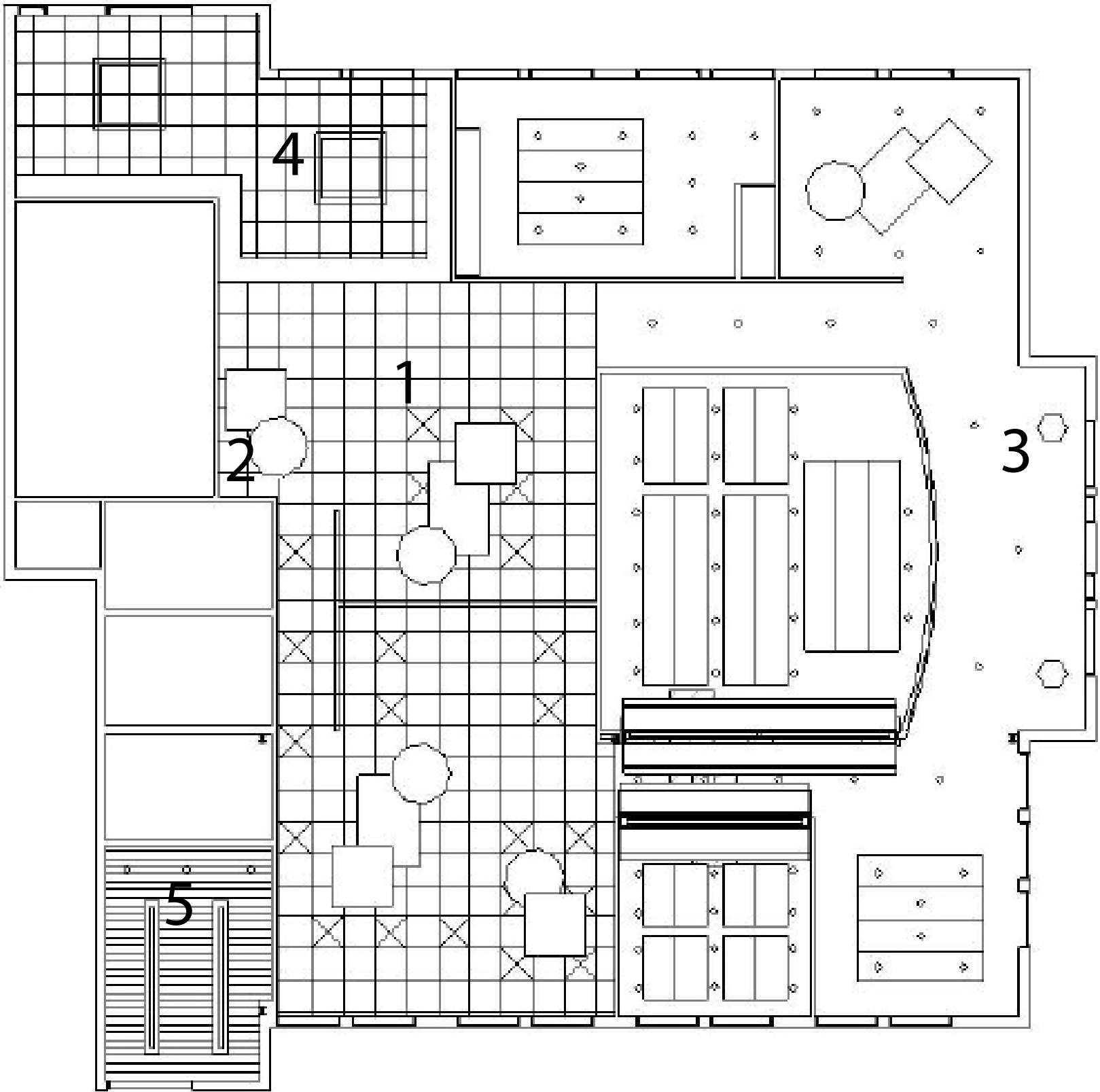
# Perspectives

Playroom to Conference



Kitchen & Bistro

# Ceiling Plan





CONCEPT:

The way Tetris pieces fit together to create a cohesive line with a multitude of shapes was the basis of our design for the redesign of Luther Consulting, LLC. This notion of unity parallels the way individuals of the Luther Consulting, LLC come together as a family. The inspiration of Tetris molds with the company's desire to have a flexible space that can transform and grow with them much like in the game Tetris where blocks can transform and fuse together. The bright colors and "techy" vibe of the game contribute not only to the integrity and aesthetics of the design, but also help satisfy the ideals of the client.

Room Taags:

- A Lobby

B Admin.

C Playroom

D Conference I

E Kitchen

F Outdoor Patio

G Bistro

H Server

I Restrooms

J Back Entrance

K Tech Support

L I.T.

M Research

N Conference 2

O Exec Office

Flooring Notes:

- 1

Dark wood flooring
- 2

Light wood flooring
- 3

Pattern of grey rubber flooring
- 4

Tile flooring

Additional Notes:

- 1

sliding doors to allow for opening into Playroom
- 2

additional collaboration space
- 3

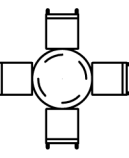
privacy wall
- 4

5'-0" partition wall
- 5


closet for storage
- 6

demountable wall with firm foam blocks as additional seating

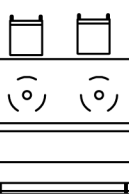
FURNITURE LEGEND:




4 person dining table



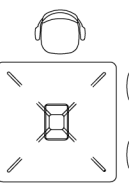
2 person dining table




Existing bistro seat with Bix table




Bar stool




Cobi seating "Scape O21"



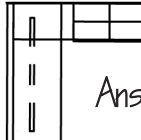
Node chair




Groupwork desk




Campfire seating



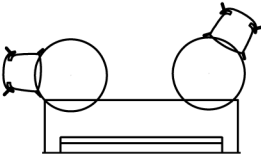
Answer "Functional Groups O1"




Walkstation



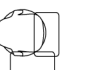
i2i lounge seat with tablet arm



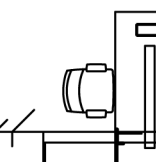
Denizen bench seating and tables



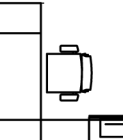
Media:scape mobile




Node chair with tablet arm




Elective Element 6  
"EE 6 Brochure  
Page 26-27"



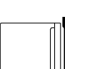
Answer "Keep it organized"



Sebastopol table



Evaneau seating asymmetrical



Evaneau single arm chair



FLOOR PLAN

RENDERINGS



LOBBY PERSPECTIVE ( above ) :

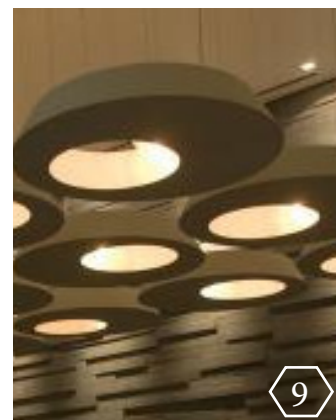
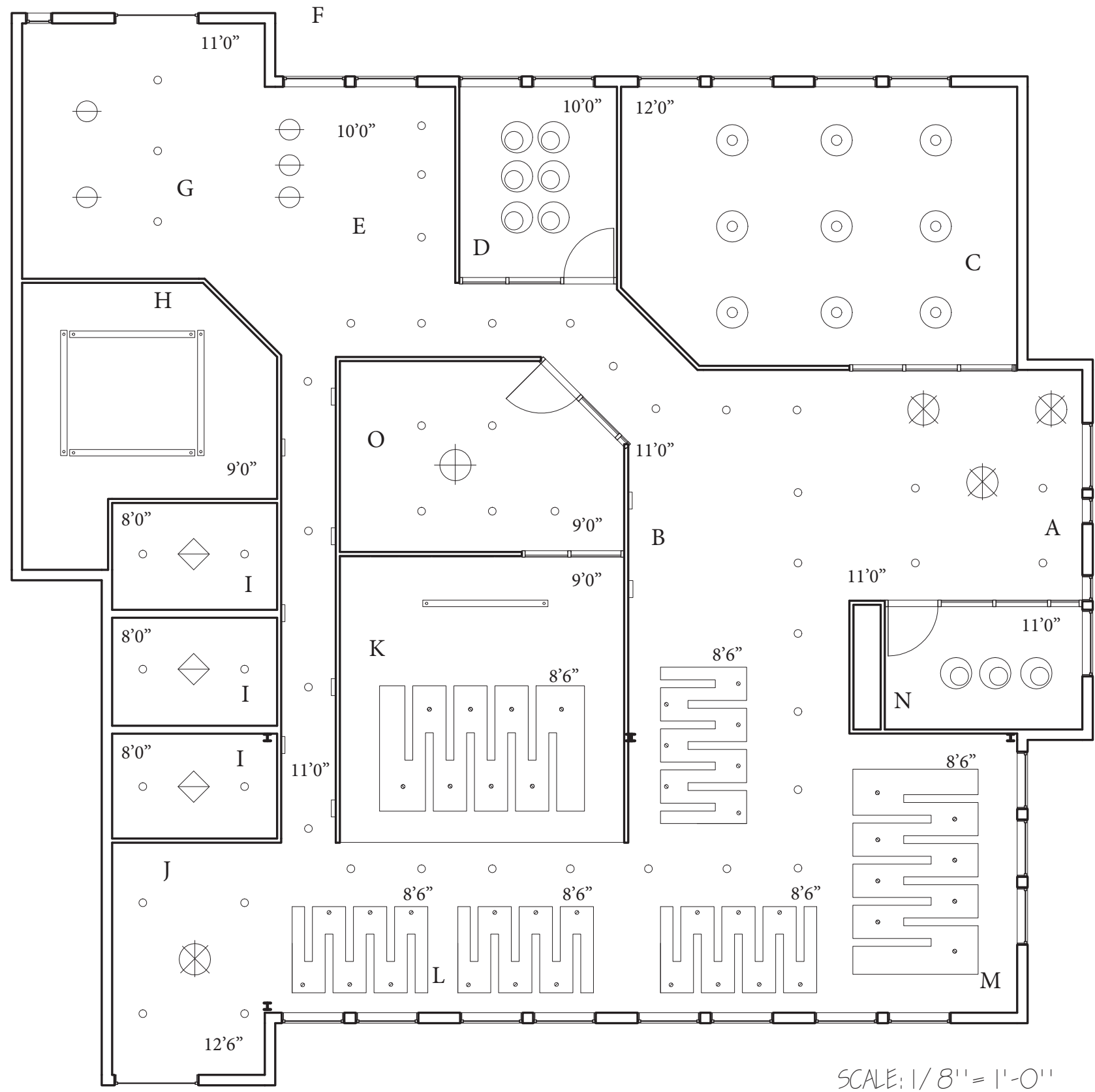
The lobby features furniture from the Evaneau line in combination with an arrangement of tables from the Sebastopol line which not only provides a waiting area for visiting quests but also acts as another small collaboration space for the company. The colored blocks on the wall are made of a firm foam covered in vinyl that can be removed from the wall and used as extra seating. The Steelcase privacy wall is used to see into the Playroom, conference rooms, and Executive Office. The same system with sliding panel doors is used between the Playroom and Conference Room I to allow for flexibility of the space. The Admin. Offices consisting of elements from the Answer line are open to the entry point of the space. The Playroom on the right side of the space features two Media:scape mobile systems, the Node chair with a tablet arm, the Node chair without the tablet arm, and a number of Groupwork desks to provide a flexible space suitable for training, meetings, and other miscellaneous activities. The abundance of natural light continues through the space with the use of the privacy walls.

TECH SUPPORT PERSPECTIVE ( below ) :

The back wall of the space features a wall that resembles the game of Tetris. These colorful panels are covered with acoustical fabric to absorb some of the noise from the members of this department being on the phone. These panels also serve as a place the company can pin up ideas for critiques and collaboration. There is a small section of privacy wall that allows the executive office to have a view of the company, as well as provide a marker board space for idea planning within the Tech support department. Behind the 5'-0" partition walls there is an additional collaboration space with more of the firm foam blocks that were featured in the lobby, as well as two i2i tablet arm chairs. The composition of gray rubber flooring continues the notion of Tetris while also providing some acoustical absorption for the workers. The ceiling system is a suspended element wrapped in acoustical fabric, again for the reduction of sound transfer. Also to help with noise is the use of the white noise system.







# LIGHTING LEGEND:

- 1 Classroom Pendant
- 2 Shaper Pendant
- 3 Exec Office Pendant
- 4 Bistro Pendant
- 5 Recessed Can
- 6 Wall Sconce
- 7 Surface Mounted
- 8 Suspended Linear
- 9 Conference Pendant
- 10 Work Station Ceiling



## CEILING PLAN

## FURNITURE AND FINISH SELECTIONS



Campfire



Node Chair



Keep It Organized



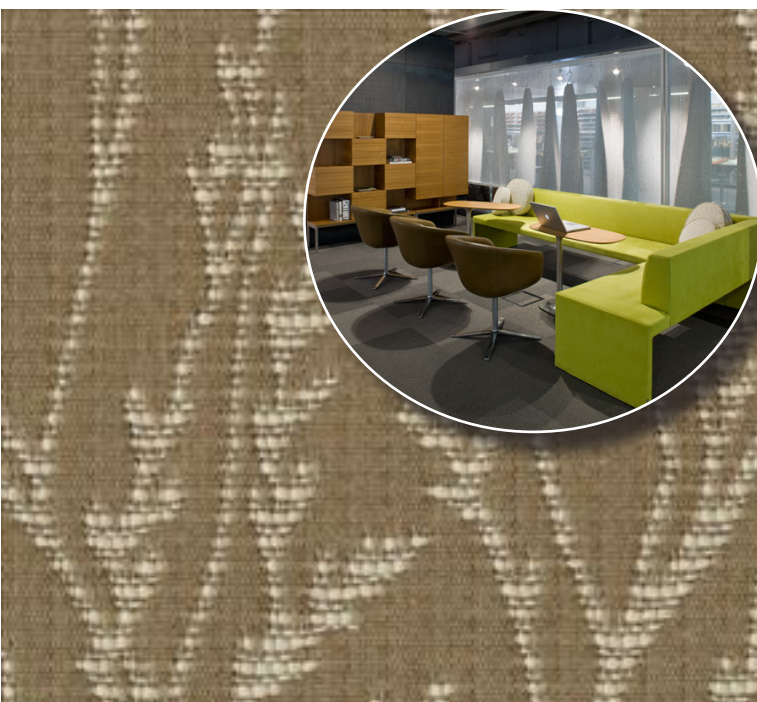
Bix Bistro Set



i2i



Evaneau



Denizen Table & Bench Seat



Functional Groups Answer Ol