

**CENTRAL NURSE STATION**

The **landscape** images chosen for the space reflect the desires of patients and staff to live with nature's beauty. **Realistic** artwork guides visitors through corridors and provides an invitation to relax during the visit. Various **natural** images encourage a **soothing** recovery and provide a positive distraction to patients, visitors, and staff. **Therapeutic** scenes enhance the **healing** process.

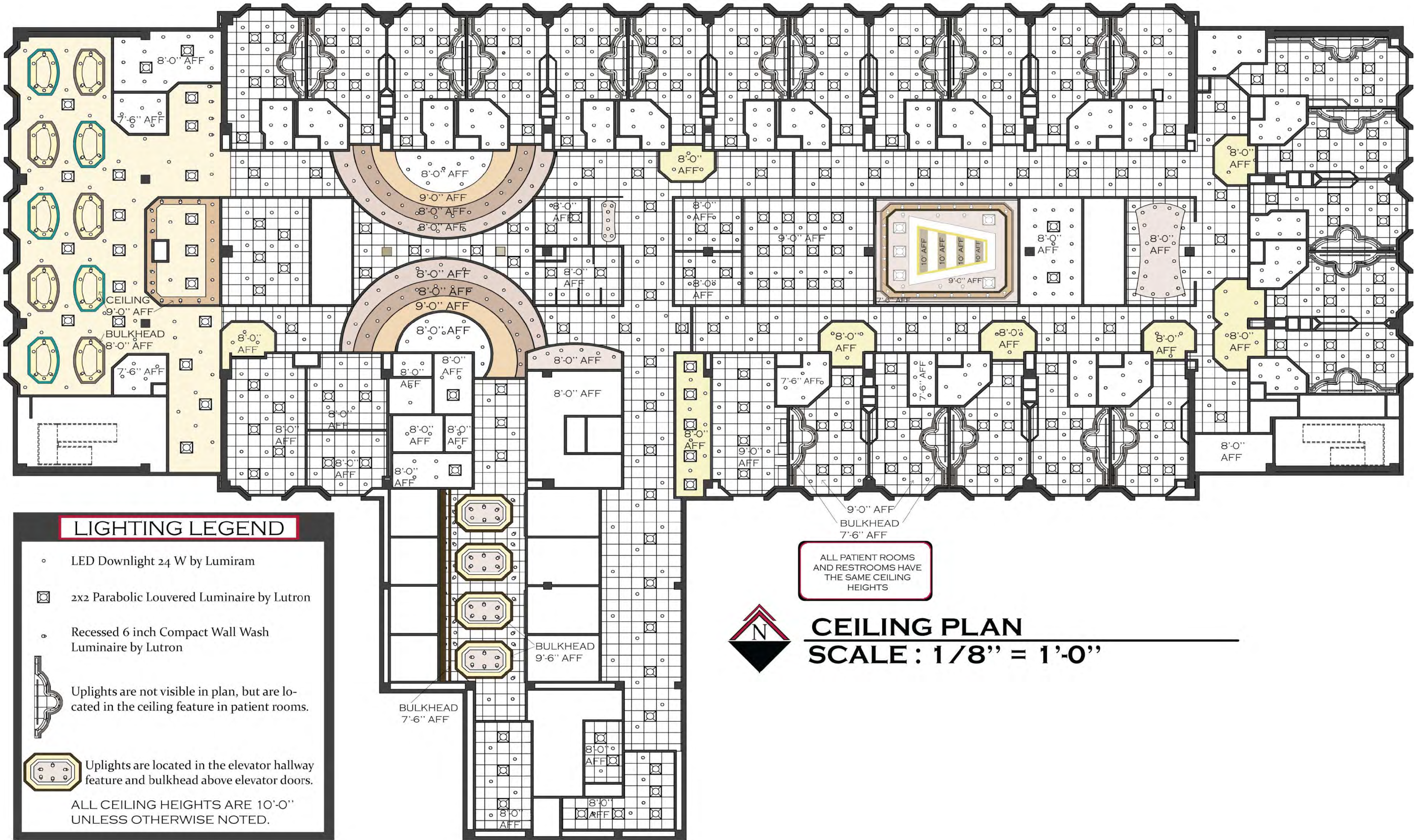


**PUBLIC ELEVATOR HALLWAY AND "CANCER WALL"**

### CONCEPT:

Designing with a special emphasis on **chromotherapy** creates the perfect **healing** atmosphere for an individual's physical and **psychological wellness**. Color is used as an alternative treatment, which contributes to the holistic experience. **Warm** yellows, browns, hints of green and purple are used to achieve **healing**. Hues found in **nature** can evoke emotions and thoughts that are **calm, energized** and full of inspiration. Warm hues and **soft** finishes are used to produce a relaxing environment desirable for **oncology and hospice** patients at Ball Memorial Hospital. Sharp edges are softened through the use of irregular **octagonal** lines throughout the unit. An octagon parallels circular forms, in that they both connect with **smooth** transitions. The octagon abstractly alludes to the **life cycle**. A person is faced with challenges and choices throughout life, and must turn in a **new direction** and look forward to future events. Elements of **home**, such as framed artwork, **resilient** material selections, and **personalization** of infusion bays will influence a patient's stay in the hospital. Nature is integrated by wood flooring, exterior views, faux stone wall features, and **realistic landscape** photos. We hope that patients and staff will enjoy time spent here as a result of careful considerations to colors and **atmosphere** provided on the Oncology floor.





INFUSION VIEW TO WEST WALL

"An oncology ward is a battlefield, and there are definite hierarchies of command. The patients, they're the ones doing the tour of duty. The doctors breeze in and out like conquering heroes. . . It is the nurses who are the seasoned sergeants . . . The doctors may be mapping out the war games, but it is the nurses who make the conflict bearable."

— Jodi Picoult (My Sister's Keeper)



INFUSION FROM SOUTH WALL TO NORTH WALL

EXTERIOR VIEW  
BALL MEMORIAL HOSPITAL







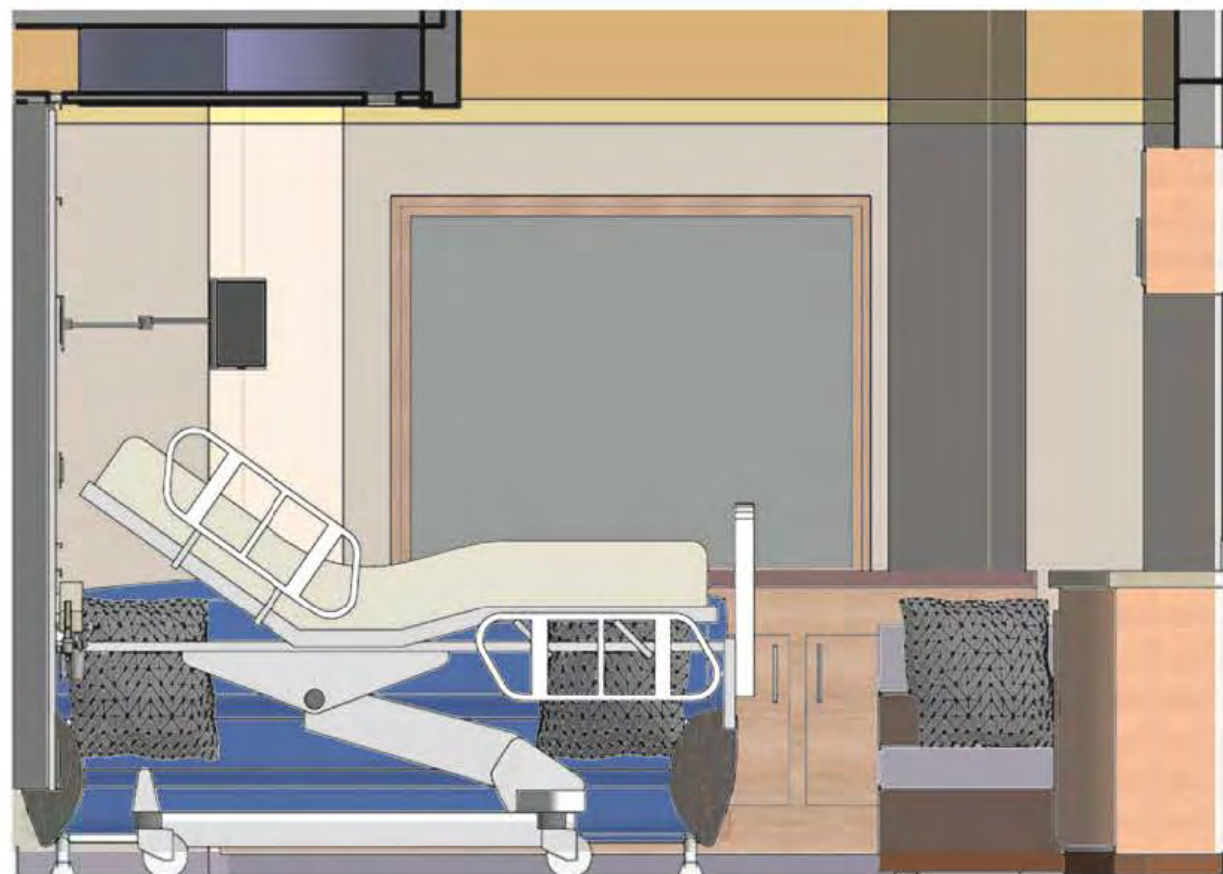
PATIENT ROOM



PATIENT ROOM : DETAIL OF HEADWALL



PATIENT ROOM : HEADWALL  
SCALE: 1/2" = 1'-0"

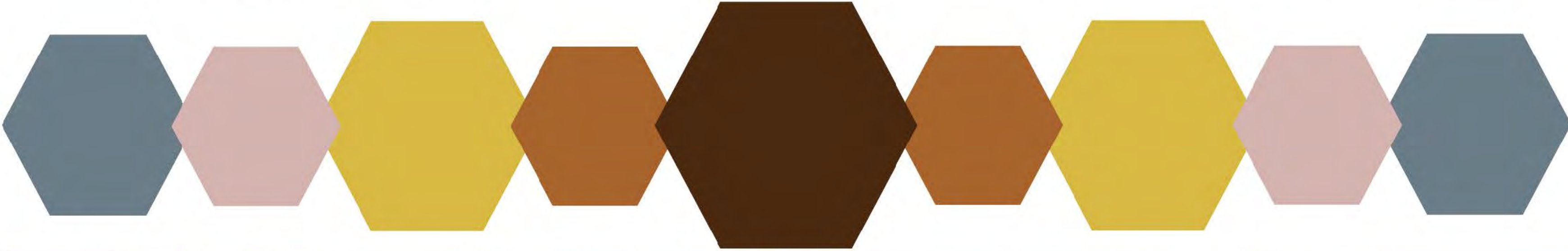


PATIENT ROOM : CEILING  
SCALE: 1/2" = 1'-0"



CHARTING STATION

This charting station allows nurses an opportunity to provide patients with more comprehensive care because of the proximity to the patient rooms. Nurses and staff will walk fewer steps to reach a charting location if they are distant from the central station. A patient will feel more comfortable in this arrangement because he has the knowledge and satisfaction that nurses are available just a short distance from his room. The station adds visual interest to the hallway and helps with wayfinding.



CONFERENCE ROOM VIEW TO WEST WALL



CONFERENCE ROOM : NORTH WALL ELEVATION  
SCALE: 1/2" = 1'-0"



CONFERENCE ROOM : WEST WALL ELEVATION  
SCALE: 1/2" = 1'-0"

