

**PROJECT NAME: ANTHONY WEST BOILER REPLACEMENT**  
**OWNER NAME: BALL STATE UNIVERSITY**  
**BSU PROJECT NO. 2025-031.01 AN / CES PROJECT NO. 2025-002.AAW**  
**ADDENDUM NO. 02**  
**DATED: 04/23/2025**

This Addendum consists of one (1) addendum pages and five (5) attachment pages totaling six (6) pages. This Addendum shall supplement, amend, and become part of the Bid Documents. All Bids shall be based on these modifications. Bidders shall acknowledge the receipt of this addendum on their Bid Form.

## **PART 1 - CHANGES TO THE DRAWINGS**

Modifications described herein shall be incorporated in the Drawings. All other Work shall remain unchanged.

### **1.1 DRAWING SHEETS: ADDITIONS, DELETIONS AND REPLACEMENTS**

<b>DRAWING NO.</b>	<b>INDICATE ACTION:</b>
<b>M-SERIES DRAWINGS</b>	
MP101 – MECHANICAL ROOM FLOOR PLANS	DELETE AND REPLACE
M701 – TEMPERATURE CONTROL SCHEMATICS	DELETE AND REPLACE
<b>P-SERIES DRAWINGS</b>	
P-601 - PLUMBING DETAIL, ISOMETRIC AND SCHEDULES	DELETE AND REPLACE
PP101 – PLUMBING FIRST FLOOR PLANS	DELETE AND REPLACE
<b>E-SERIES DRAWINGS</b>	
EP101 – ELECTRICAL FLOOR PLANS	DELETE AND REPLACE

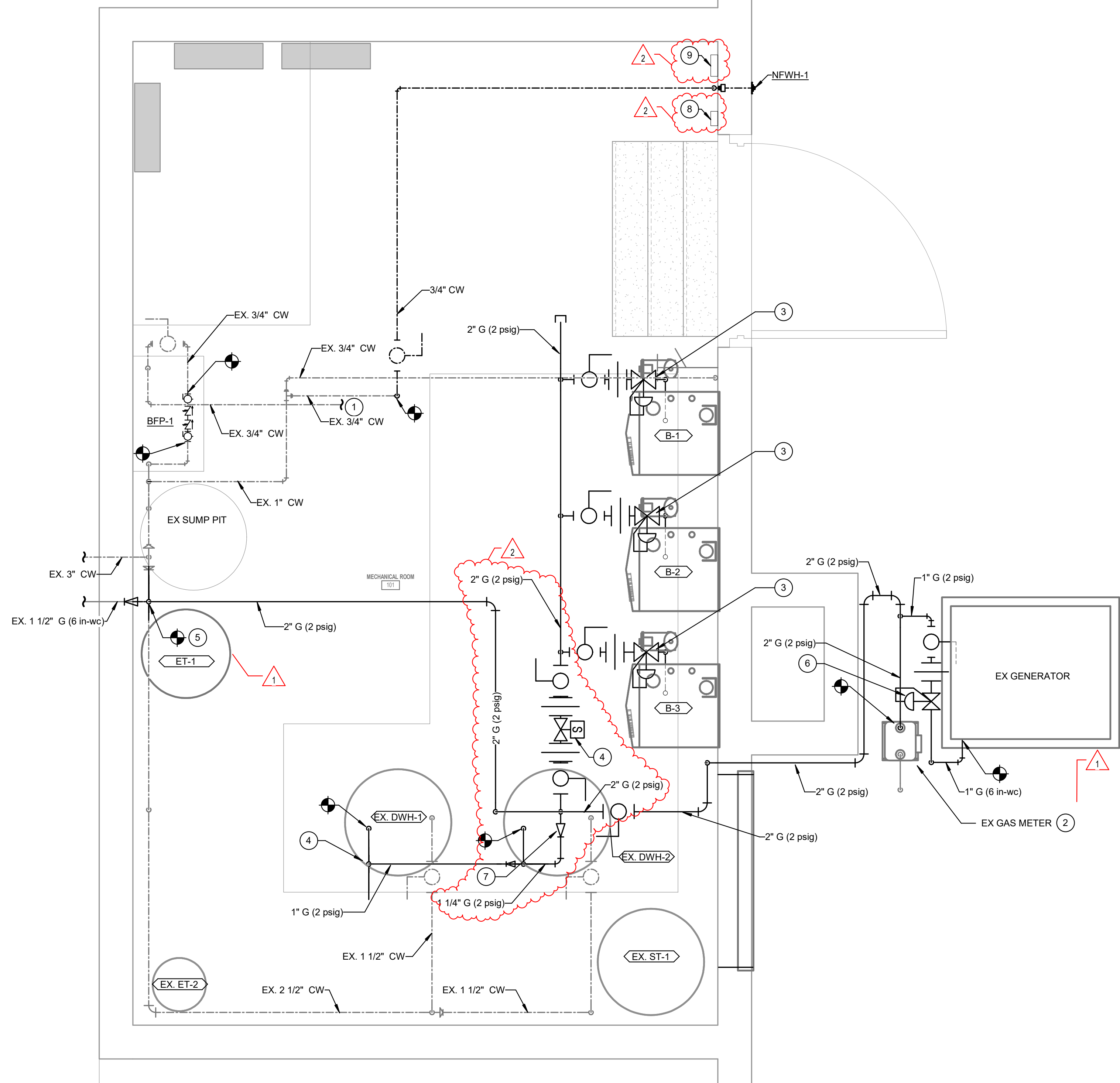
**END OF ADDENDUM NO. 2**

○ PLUMBING PLAN NOTES

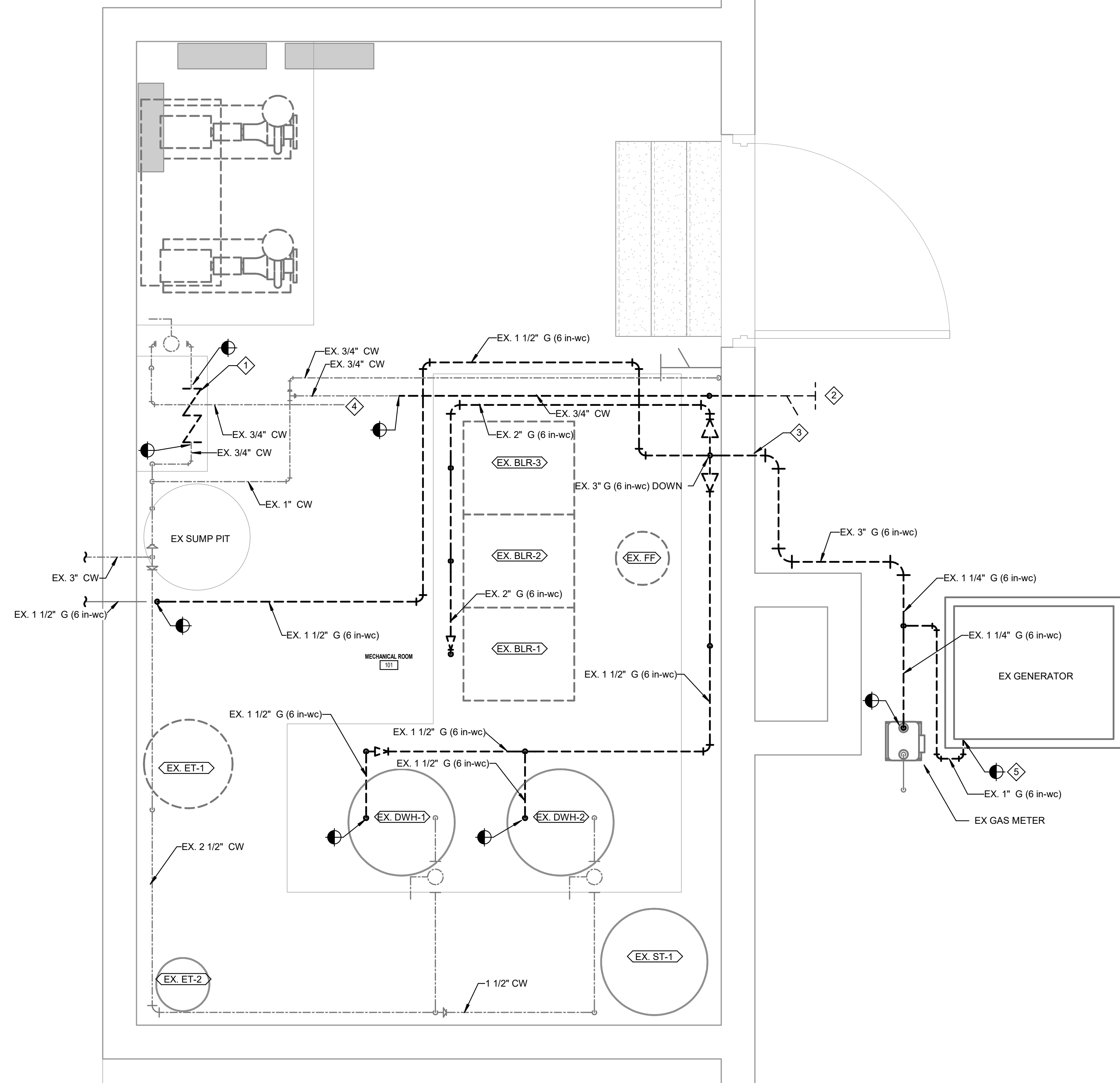
- 1 SEE 'M' SERIES DRAWINGS FOR CONNECTION TO THE BOILER MAKEUP WATER SYSTEM.
- 2 CONTACT NATHAN KUNKLER AT CENTERPOINT ENERGY AT 1-812-948-4969 TO REQUEST A SERVICE PRESSURE INCREASE FROM 6" W.C. TO 2 PSI.
- 3 PROVIDE A GAS PRESSURE REGULATOR TO ACCEPT (2 PSI) SERVICE PRESSURE AND REGULATE DOWN TO 10" W.C. SUPPLYING 285 CFH.
- 4 PROVIDE A GAS PRESSURE REGULATOR TO ACCEPT (2 PSI) SERVICE PRESSURE AND REGULATE DOWN TO 10" W.C. SUPPLYING 200 CFH.
- 5 PROVIDE A GAS PRESSURE REGULATOR TO ACCEPT (2 PSI) SERVICE PRESSURE AND REGULATE DOWN TO 6" W.C. SUPPLYING 800 CFH.
- 6 PROVIDE A GAS PRESSURE REGULATOR TO ACCEPT (2 PSI) SERVICE PRESSURE AND REGULATE DOWN TO 6" W.C. SUPPLYING 150 CFH.
- 7 EMERGENCY GAS SHUT-OFF VALVE-2" (AGS: #AGS-GSV2)
- 8 EMERGENCY GAS SHUT-OFF PANIC BUTTON (AGS: #AGSGOTWMM)
- 9 EMERGENCY GAS SHUT-OFF CONTROL PANEL (AGS: #AGS CH4CO)

◇ DEMOLITION PLAN NOTES

- 1 REMOVE EXISTING BACKFLOW PREVENTER AND PREPARE PIPING TO ACCOMMODATE NEW BACKFLOW PREVENTER TO BE INSTALLED.
- 2 REMOVE EXISTING WALL HYDRANT AND ASSOCIATED PIPING COMPLETE. PATCH WALL TO MATCH EXISTING.
- 3 PATCH WALL TO MATCH EXISTING AFTER REMOVAL OF GAS PIPING.
- 4 REMOVE PIPING FROM HVAC MAKE-UP WATER ASSEMBLY. PREPARE PIPING FOR CONNECTION TO NEW ASSEMBLY. SEE 'M' SERIES DRAWINGS FOR MORE INFORMATION.
- 5 REMOVE EXISTING GAS PIPING FROM EXISTING GENERATOR COMPLETE AND PREPARE EXISTING GENERATOR FOR NEW CONNECTION.



2 PLUMBING ENLARGED MECHANICAL ROOM PLAN  
3/4" = 1'-0"



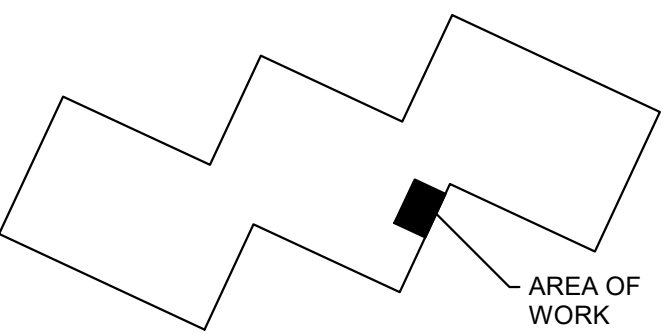
1 PLUMBING DEMOLITION ENLARGED MECHANICAL ROOM PLAN  
3/4" = 1'-0"



ANTHONY WEST APARTMENT  
BOILER REPLACEMENTS  
BALL STATE UNIVERSITY  
2301 W BETHEL AVE MUNCIE, IN 47304



@COPYRIGHT  
THESE DRAWINGS ARE THE PROPERTY OF  
CREATIVE ENGINEERING SOLUTIONS AND ARE  
NOT TO BE ON ANY OTHER PROJECT. DRAWINGS  
SHALL BE RETURNED UPON REQUEST. NOT VALID  
UNLESS SIGNED AND SEALED.



KEY PLAN

#	REVISION	DATE
1	Addendum #01	04/15/2025
2	Addendum #02	04/23/2025

JOB NO. 2025-002.AAW  
PRODUCED LLP  
DATE 04/16/2025

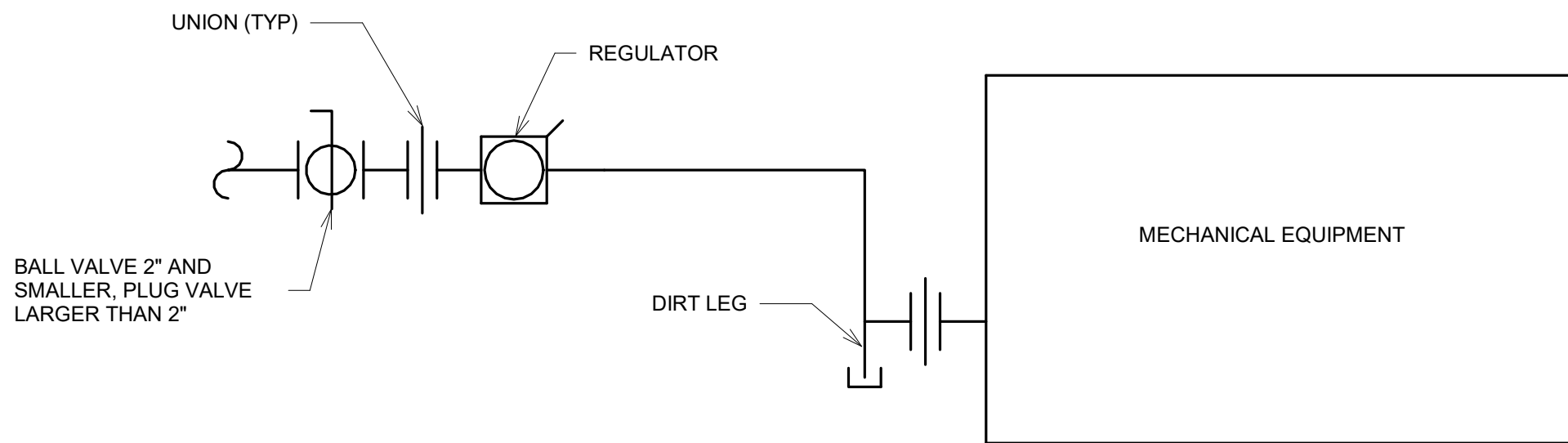
PLUMBING FIRST FLOOR  
PLANS



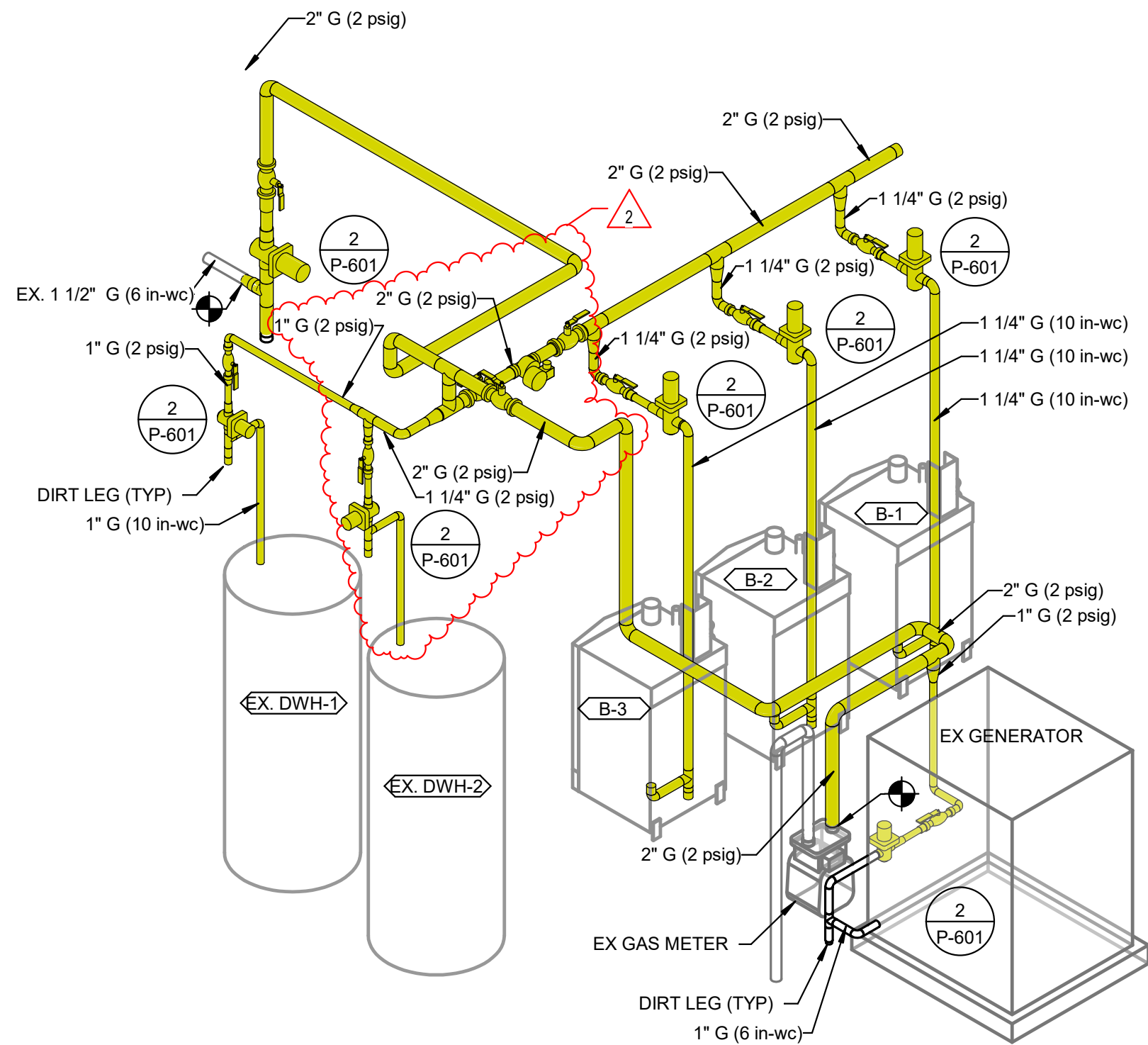
PLUMBING DETAIL, ANTHONY WEST APARTMENT BOILER REPLACEMENTS  
2301 W BETHEL AVE, MUNCIE, IN 47304  
10/2024 10:48 AM

MIXING, METERING, AND PRESSURE REDUCING VALVES (221119)					
IDENTITY DATA					
MARK	MANUFACTURER	MODEL	DESCRIPTION	FLOW RATE	PRESSURE DROP
BFP-1	ZURN WILKINS	#975XL52 - 3/4"	REDUCED PRESSURE BACKFLOW PREVENTER	30 GPM	14.30 psi

DOMESTIC WATER PIPING SPECIALTIES SCHEDULE (221119)									
IDENTITY DATA				FIXTURE CONNECTION				MOUNTING (FLOOR TO OUTLET)	NOTES
MARK	MANUFACTURER	MODEL	DESCRIPTION	CW	HW	W	V		
NFWH-1	ZURN	#21310	NONFREEZE WALL HYDRANT	3/4"				18" A.F.F.	



2 GAS CONNECTION TO MECHANICAL EQUIPMENT DETAIL  
1 1/2" = 1'-0"



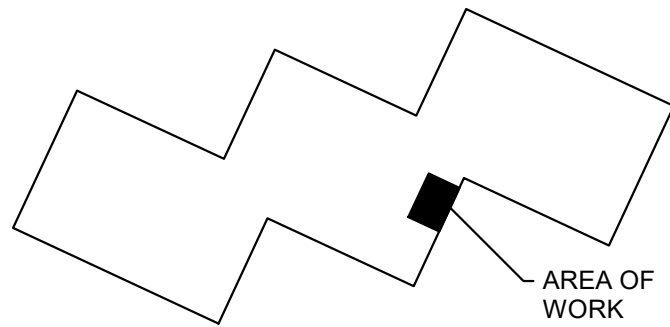
1 GAS PIPING ISOMETRIC  
NOT TO SCALE



ANTHONY WEST APARTMENT  
BOILER REPLACEMENTS  
BALL STATE UNIVERSITY  
2301 W BETHEL AVE MUNCIE, IN 47304



@COPYRIGHT  
THESE DRAWINGS ARE THE PROPERTY OF  
CREATIVE ENGINEERING SOLUTIONS AND ARE  
NOT TO BE ON ANY OTHER PROJECT. DRAWINGS  
SHALL BE RETURNED UPON REQUEST. NOT VALID  
UNLESS SIGNED AND SEALED.



KEY PLAN		
#	REVISION	DATE
2	Addendum #02	04/23/2025

JOB NO. 2025-002.AAW  
PRODUCED LLP  
DATE 04/16/2025

PLUMBING DETAIL,  
ISOMETRIC AND  
SCHEDULES

P-601

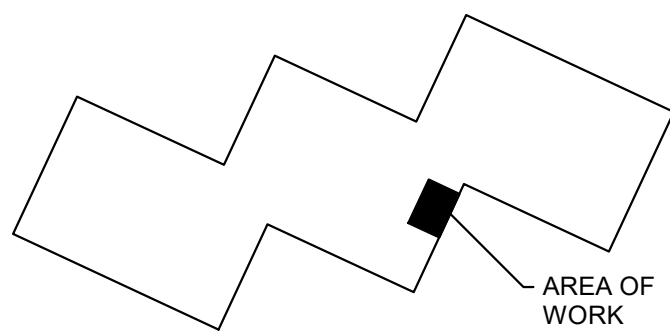




ANTHONY WEST APARTMENT  
BOILER REPLACEMENTS  
BALL STATE UNIVERSITY  
2301 W BETHEL AVE MUNCIE, IN 47304



©COPYRIGHT  
THESE DRAWINGS ARE THE PROPERTY OF  
CREATIVE ENGINEERING SOLUTIONS AND ARE  
NOT TO BE ON ANY OTHER PROJECT. DRAWINGS  
SHALL BE RETURNED UPON REQUEST. NOT VALID  
UNLESS SIGNED AND SEALED.



## KEY PLAN

#	Description	Date
1	Addendum #01	04/15/2025
2	Addendum #02	04/23/2025

JOB NO. 2025-002.AAW  
PRODUCED CSM  
DATE 04/02/2025

MECHANICAL ROOM FLOOR  
PLANS

MP101

## GENERAL DEMOLITION NOTES

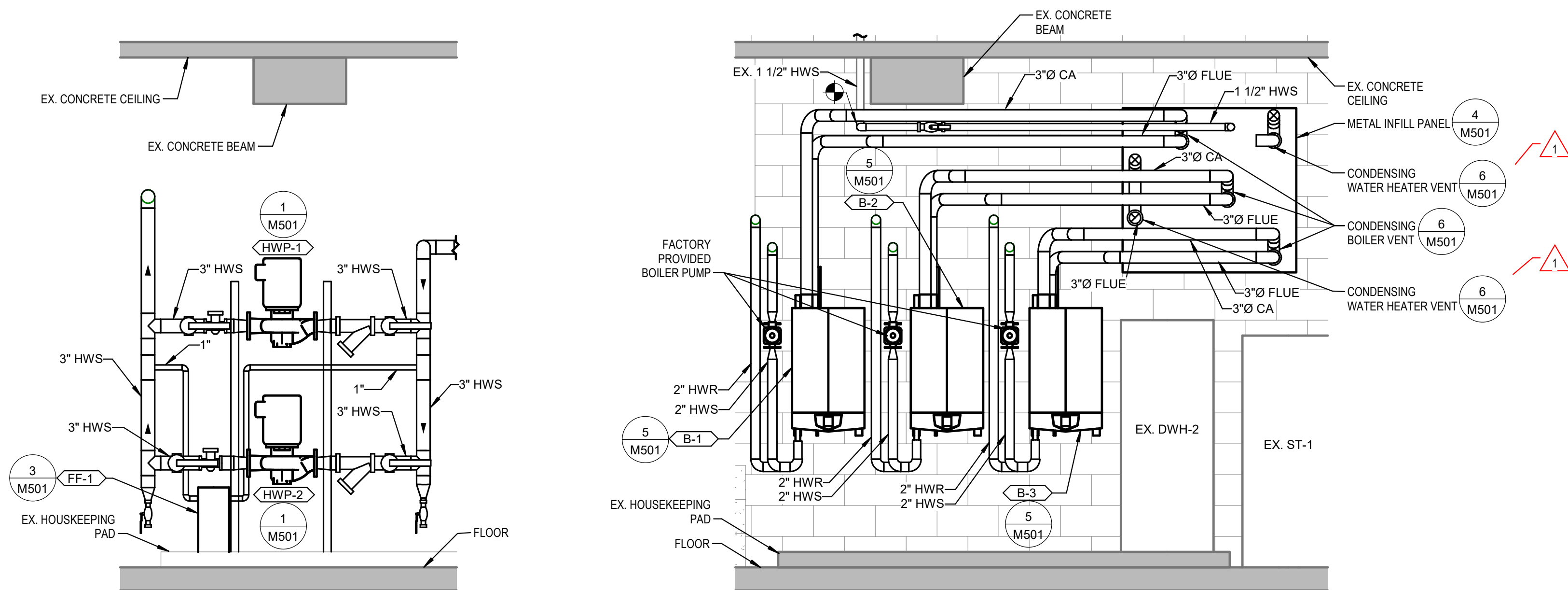
- DARK DASHED LINES INDICATE EXISTING MECHANICAL EQUIPMENT, DUCTWORK, PIPING, AND/OR MECHANICAL ACCESSORIES DEMOLISHED COMPLETE. CONTRACTOR TO FIELD VERIFY ACTUAL EXISTING CONDITIONS PRIOR TO BIDDING AND DEMOLITION. CONTRACTOR TO INCLUDE ALL COST TO REMOVE ITEMS MADE OBSOLETE DUE TO NEW WORK.
- LIGHT SOLID LINES INDICATE EXISTING MECHANICAL EQUIPMENT, PIPING, AND/OR MECHANICAL ACCESSORIES TO REMAIN AS-IS. CONTRACTOR TO FIELD VERIFY ACTUAL EXISTING CONDITIONS PRIOR TO DEMOLITION AND BIDDING.
- VERIFY EXISTING CONDITIONS PRIOR TO BIDDING AND DEMOLITION.

## DEMOLITION HVAC PLAN NOTES

- REMOVE FILTER FEEDER AND ALL ASSOCIATED PIPING COMPLETE.
- REMOVE BOILER, BOILER FLUE AND ALL ASSOCIATED PIPING COMPLETE TO WHERE SHOWN.
- REMOVE EXPANSION TANK AND ALL ASSOCIATED PIPING COMPLETE.
- REMOVE PUMP AND ALL ASSOCIATED PIPING COMPLETE.
- REMOVE PIPING TO WHERE SHOWN.
- REMOVE FLUE TO WHERE SHOWN. FIELD VERIFY QUANTITY AND SIZE OF EXISTING FLUE INSIDE ENCLOSURE.
- REMOVE LOUVER AND SHEET METAL COMPLETE.
- REMOVE EXISTING FLUE CAP AT CHIMNEY. PREPARE CHIMNEY FOR NEW WEATHER PROOF CAP.

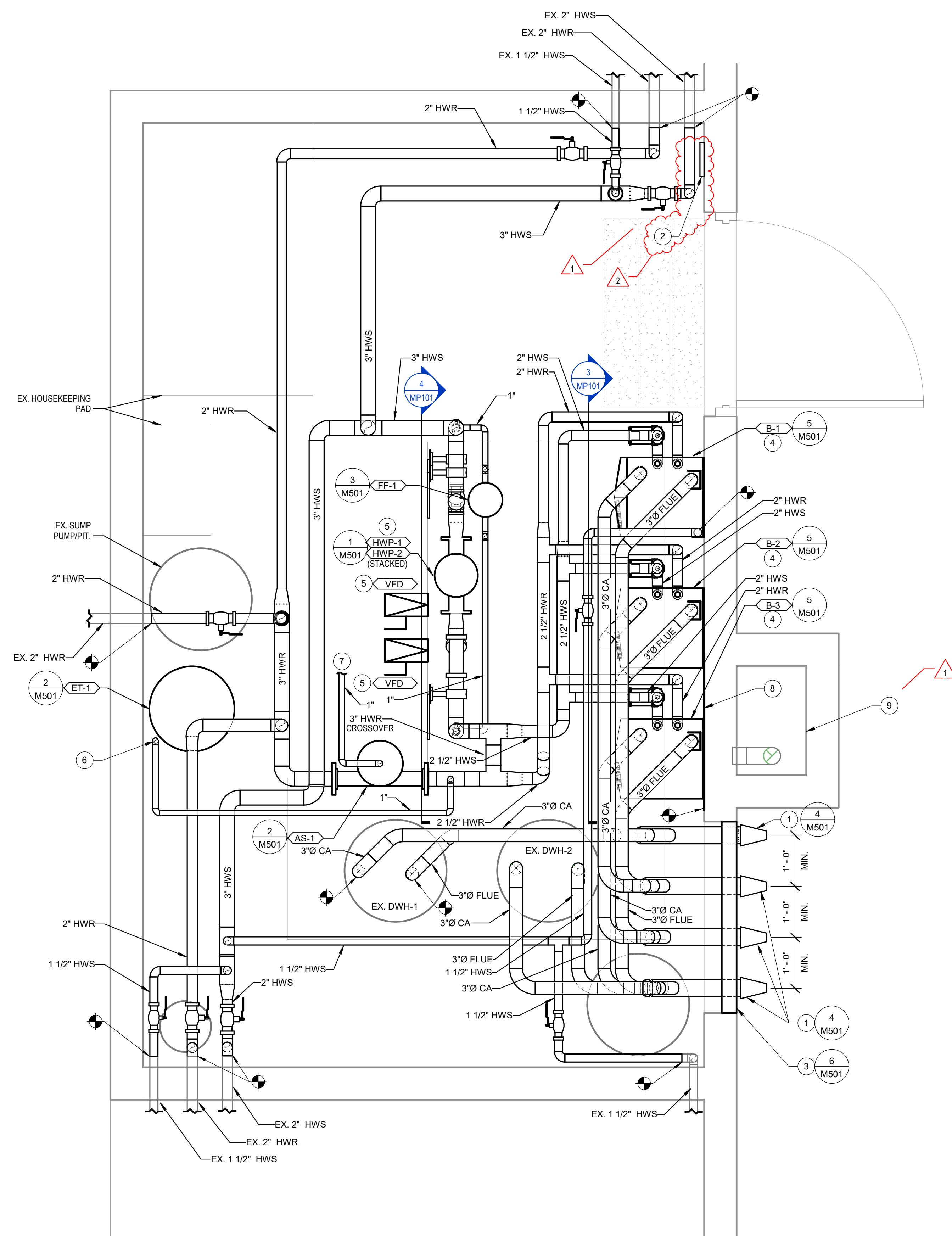
## MECHANICAL COMBINED PLAN NOTES

- PVC CONCENTRIC VENT KIT EQUAL TO LOCHINVAR #100289005. SEAL TO METAL INFILL PLATE WEATHER TIGHT. FOLLOW MANUFACTURERS RECOMMENDED INSTALLATION INSTRUCTIONS.
- EMERGENCY GAS SHUT-OFF CONTROL PANEL. SEE P-SERIES DRAWINGS FOR DETAILS.
- METAL INFILL PANEL.
- MOUNT BOILER ON WALL. FOLLOW AND MAINTAIN MANUFACTURERS RECOMMENDATIONS AND CLEARANCES.
- MOUNT HWP-1 & HWP-2 PUMPS ON UNISTRUT IN A STACKED ARRANGEMENT. MOUNT VFD'S TO UNISTRUT. MAINTAIN MAINTENANCE CLEARANCE FOR PUMPS.
- 1" PIPE DOWN TO ET-1 ON FLOOR. SEE M601 FOR DETAIL.
- 1" DOMESTIC COLD WATER MAKE-UP WITH RRPB. SEE PLUMBING PLANS.
- PROVIDE WEATHER-PROOF SHEET METAL BLANK-OFF PANEL OVER EXISTING FLUE/PLENUM OPENING (FIELD VERIFY SIZE). SEAL WEATHER TIGHT.
- PROVIDE WEATHER-PROOF CHIMNEY CAP (FIELD VERIFY SIZE). SEAL WEATHER TIGHT TO EXISTING CHIMNEY.

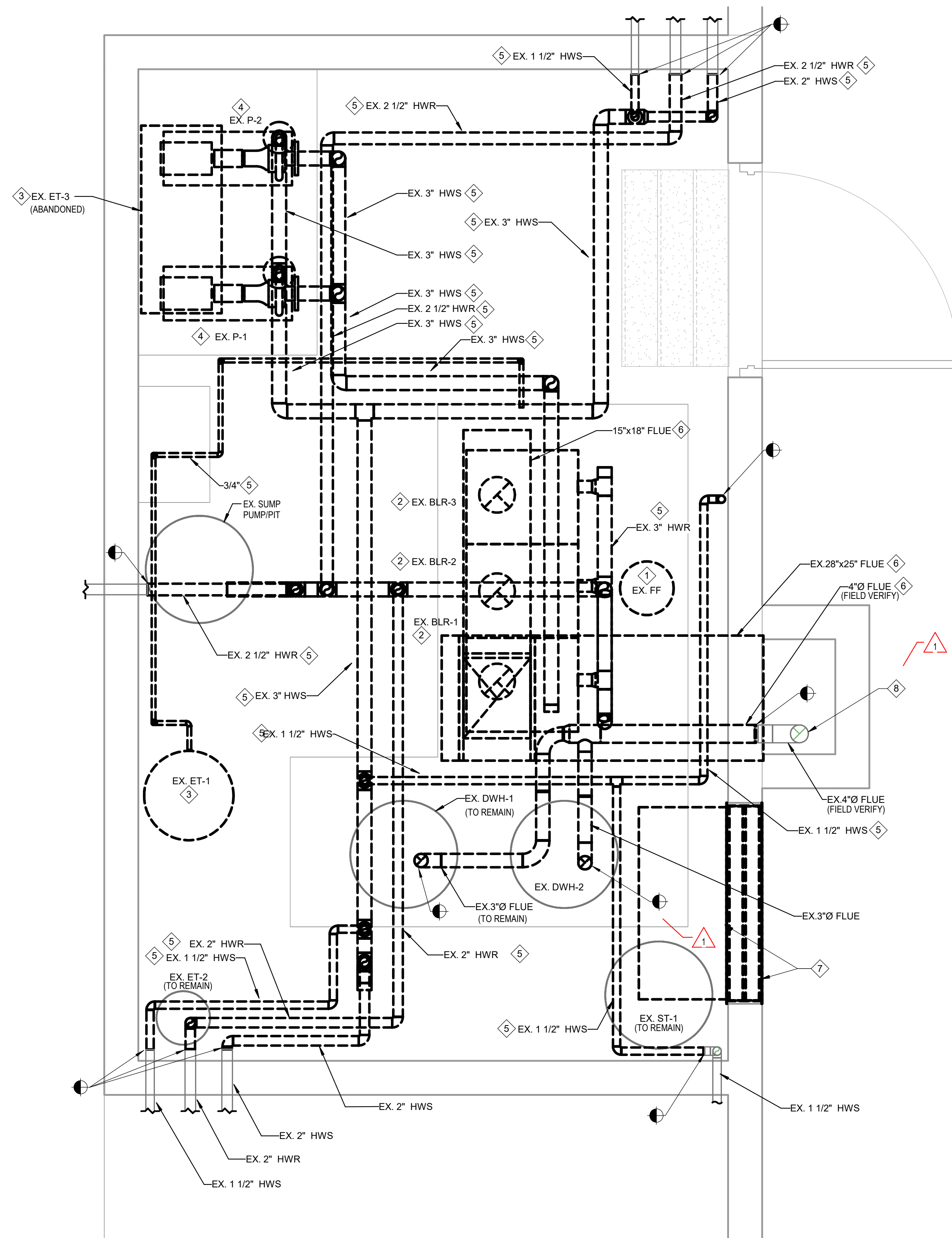


4 PUMP ELEVATION  
1/2" = 1'-0"

3 BOILER ELEVATION  
1/2" = 1'-0"



2 ENLARGED MECHANICAL ROOM PIPING PLAN  
3/4" = 1'-0"



1 ENLARGED MECHANICAL DEMOLITION PLAN  
3/4" = 1'-0"

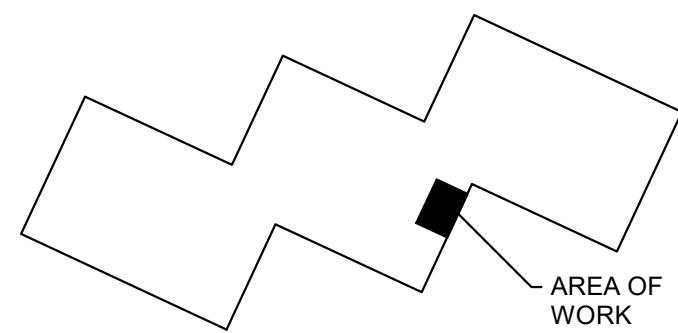




ANTHONY WEST APARTMENT  
BOILER REPLACEMENTS  
BALL STATE UNIVERSITY  
2301 W BETHEL AVE MUNCIE, IN 47304



@COPYRIGHT  
THESE DRAWINGS ARE THE PROPERTY OF  
CREATIVE ENGINEERING SOLUTIONS AND ARE  
NOT TO BE ON ANY OTHER PROJECT. DRAWINGS  
SHALL BE RETURNED UPON REQUEST. NOT VALID  
UNLESS SIGNED AND SEALED.



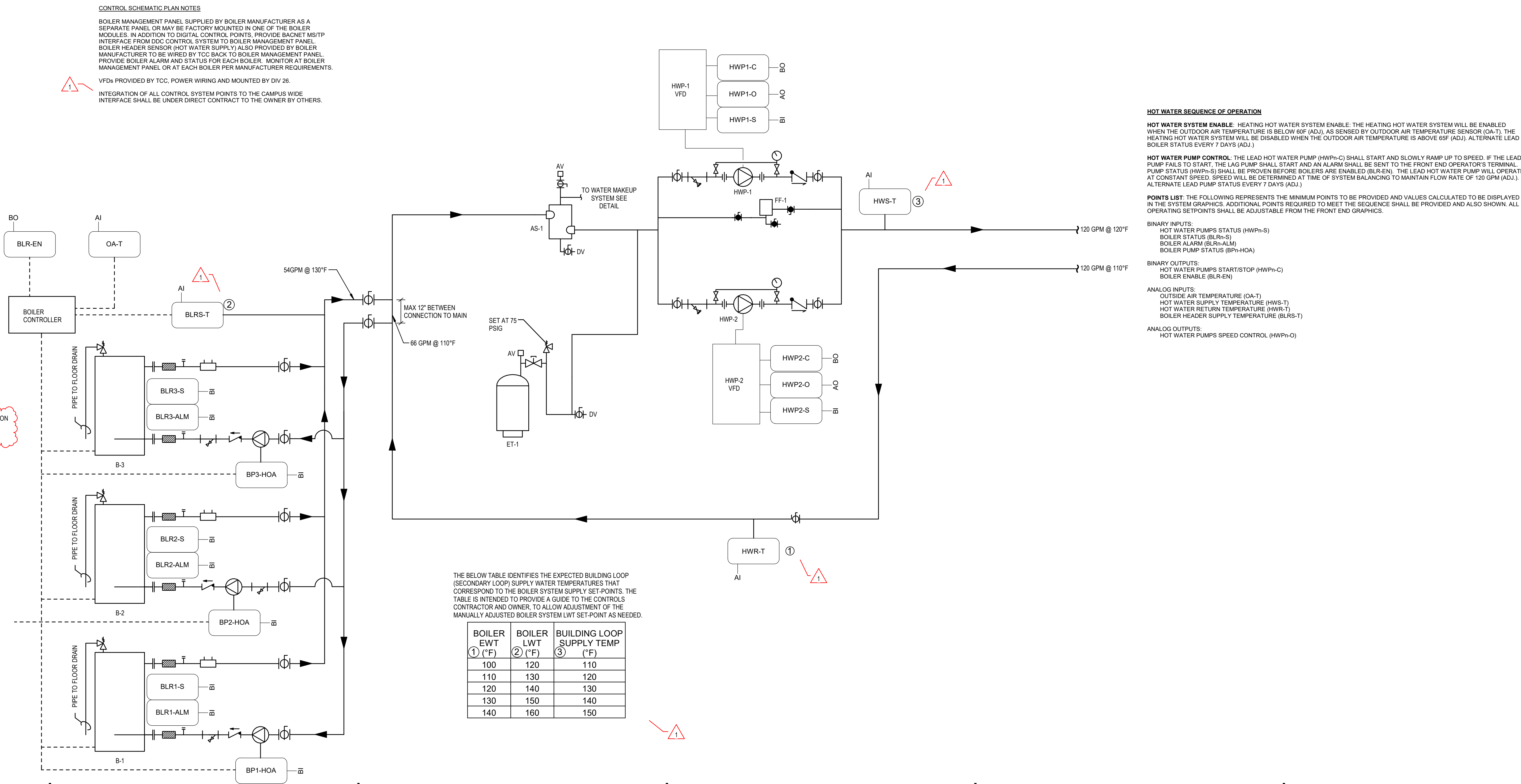
## KEY PLAN

#	Description	Date
1	Addendum #01	04/15/2025
2	Addendum #02	04/23/2025

JOB NO. 2025-002.AAW  
PRODUCED CSM  
DATE 04/02/2025

## TEMPERATURE CONTROLS SCHEMATICS

M-701



ENCLOSED & VARIABLE-FREQUENCY MOTOR CONTROLLERS SCHEDULE												
LABEL	EQUIPMENT SERVED	EQUIPMENT RATINGS					STARTER		DISCONNECT SWITCH		REMOTE CAPACITOR	REMARKS
		VOLTAGE	PHASE	HP	FLA	NEMA ENCL	TYPE	NEMA SIZE	TYPE	FUSE SIZE		
VFD-1	HWP-1	240 V	2	2	12.0 A	1	FVNR	1	FUSIBLE	20	-	PROVIDED BY DIVISION 23. INSTALLED BY DIVISION 26.
VFD-2	HWP-2	240 V	2	2	12.0 A	1	FVNR	1	FUSIBLE	20	-	PROVIDED BY DIVISION 23. INSTALLED BY DIVISION 26.

ENCLOSED SWITCHES & CIRCUIT BREAKERS SCHEDULE										
LABEL	EQUIPMENT SERVED	EQUIPMENT RATINGS					ACCESSORIES			REMARKS
		VOLTAGE	POLES	AMPERAGE	FUSED	FUSE SIZE	NEMA ENCL	AUX. CONTACTS	SOLID NEUTRAL	
BDS	B-1, B-2, B-3	120 V	1	30 A	Yes	20A	1	(1) N.O. / N.C.	No	

### GENERAL POWER NOTES

A REFER TO ELECTRICAL SYMBOLS AND ABBREVIATIONS SHEET E-001 FOR ADDITIONAL INFORMATION.

### POWER PLAN NOTES

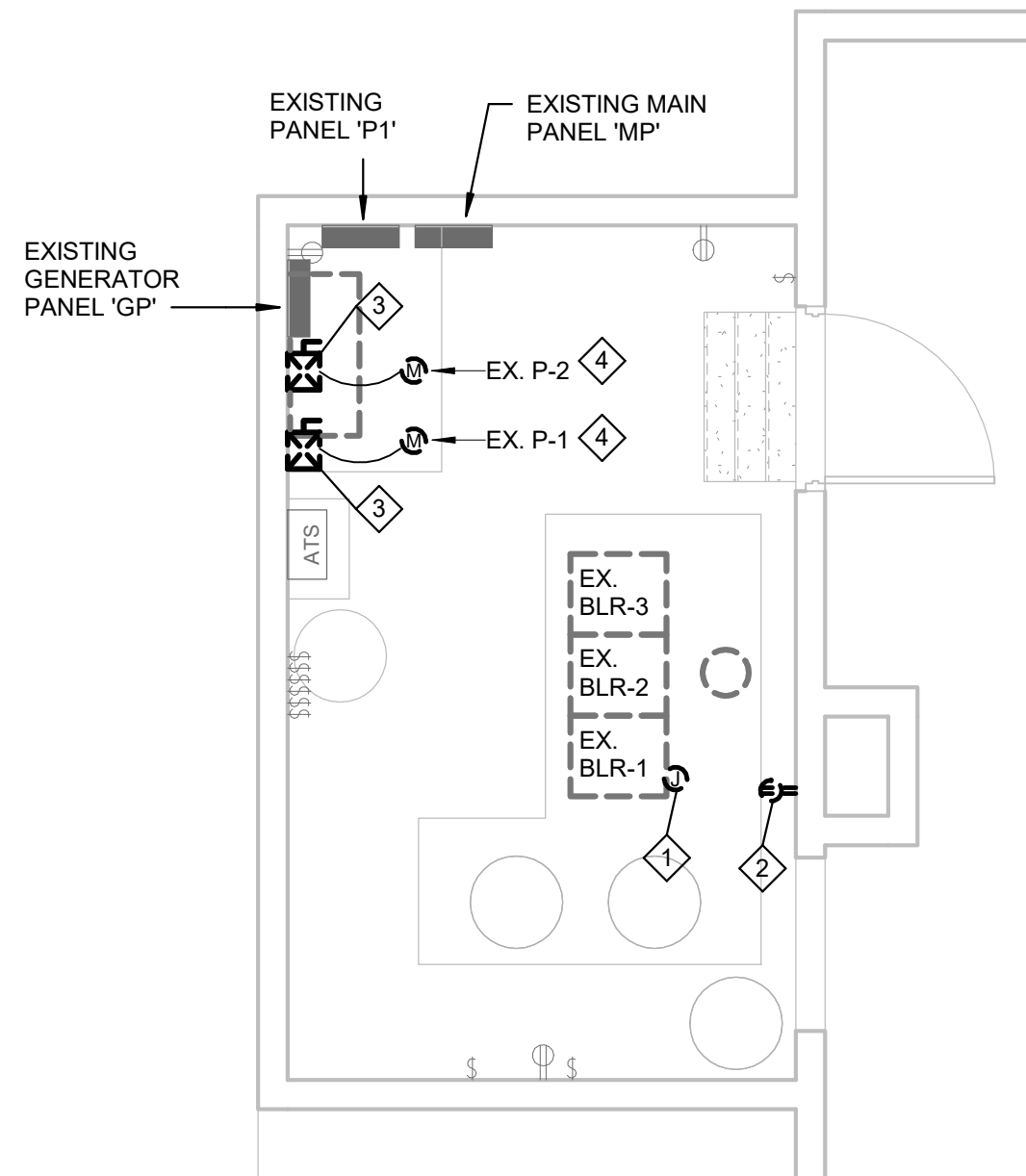
- CONNECT NEW BOILERS TO EXISTING 20A CIRCUIT BREAKER.
- CONNECT HEATING WATER PUMP AND VFD TO THE EXISTING 20A 2-POLE CIRCUIT BREAKER.
- RELOCATE CIRCUIT 10 TO SPACE 11 IN PANEL 'GP' TO ACCOMMODATE NEW BREAKER IN SPACES 10,12. EXTEND WIRES TO NEW BREAKER LOCATION MATCHING EXISTING SIZES. PROVIDE NEW 20A 2-POLE BREAKER AT CIRCUIT 10,12.
- CONNECT HEATING WATER PUMP AND VFD TO NEW 20A 2-POLE CIRCUIT BREAKER.
- CONNECT EMERGENCY GAS SHUT-OFF PANEL TO NEAREST AVAILABLE RECEPTACLE CIRCUIT. CONNECT WITH 2#12, #12G IN 3/4". CONNECT EMERGENCY SHUTOFF PUSH BUTTON TO PANEL WITH 2#12, #12G IN 3/4".
- CONNECT EMERGENCY SHUTOFF VALVE TO PANEL WITH 2#12, #12G IN 3/4".

### GENERAL DEMOLITION NOTES

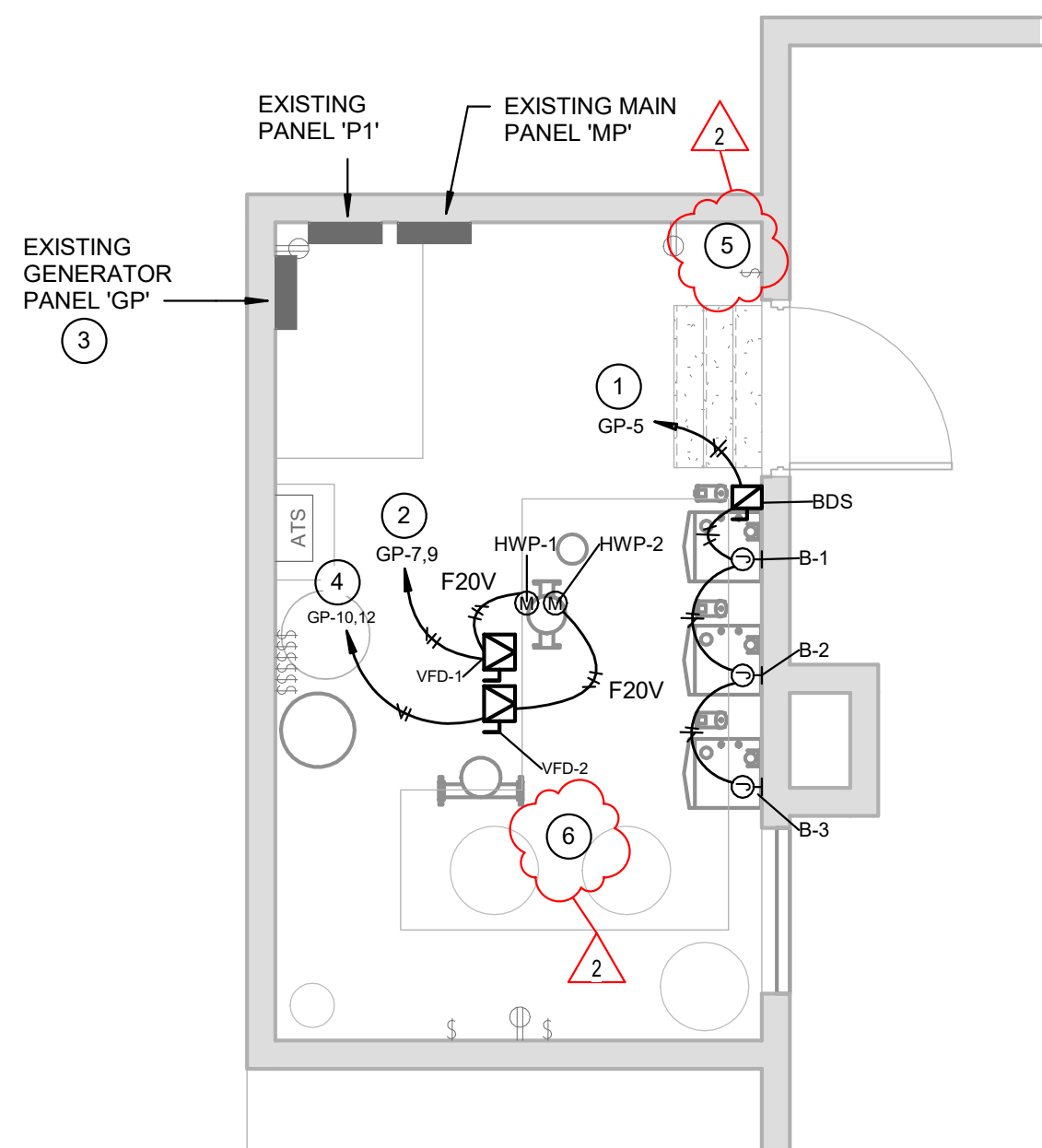
- A REFER TO ELECTRICAL SYMBOLS AND ABBREVIATIONS SHEET E-001 FOR ADDITIONAL INFORMATION.
- B THIS DRAWING REPRESENTS INFORMATION OBTAINED FROM ORIGINAL CONTRACT DRAWINGS AND FIELD SURVEY. VERIFY BY ON-SITE OBSERVATION THE EXTENT OF WORK PRIOR TO SUBMISSION OF BID.
- C CONTRACT DOCUMENTS CONSIST OF BOTH PROJECT MANUAL AND DRAWINGS AND ARE MEANT TO BE COMPLEMENTARY. ANYTHING APPEARING ON EITHER MUST BE EXECUTED THE SAME AS IF SHOWN ON BOTH.
- D THOROUGHLY EXAMINE THE WORK OF OTHER CONTRACTORS AND PROPERLY DEMOLISH ALL WORK REQUIRED FOR THE PROJECT.
- E THE OWNER HOLDS RIGHT OF FIRST REFUSAL FOR ALL DEMOLISHED ELECTRICAL EQUIPMENT.
- F ALL ELECTRICAL ITEMS SHOWN WITH LIGHT LINEWORK ARE EXISTING TO REMAIN.
- G REMOVE ALL ELECTRICAL ITEMS SHOWN WITH BOLD/DASHED LINEWORK COMPLETE.
- H COORDINATE AND DISCONNECT ALL ARCHITECTURAL, MECHANICAL, AND PLUMBING EQUIPMENT AS NOTED FOR REMOVAL BY OTHERS. REMOVE ALL ASSOCIATED ELECTRICAL EQUIPMENT, RACEWAYS, CONDUCTORS, ETC. SERVING THE EQUIPMENT.
- I PROVIDE ALL CUTTING AND PATCHING AS REQUIRED FOR THE REMOVAL OF EXISTING ELECTRICAL EQUIPMENT. REFER TO SPECIFICATIONS.
- J PROVIDE A BLANK COVERPLATE FOR ALL EXISTING WALL OPENINGS WHERE ELECTRICAL EQUIPMENT HAS BEEN REMOVED AND NOT REPLACED. IN AREAS RECEIVING NEW WALL TREATMENTS, PATCH THE EXISTING OPENING.

### DEMOLITION PLAN NOTES

- 1 DISCONNECT EXISTING SET OF BOILERS. REMOVE CONDUIT AND WIRING BACK TO SOURCE.
- 2 DISCONNECT AND REMOVE EXISTING RECEPTACLE. REMOVE CONDUIT, BOX, AND WIRING BACK TO SOURCE.
- 3 DISCONNECT AND REMOVE EXISTING MOTOR STARTER. REMOVE CONDUIT AND WIRING BACK TO SOURCE.
- 4 DISCONNECT EXISTING HEATING WATER PUMP. REMOVE CONDUIT AND WIRING BACK TO SOURCE.



2 ELECTRICAL DEMOLITION PLAN  
1/4" = 1'-0"



1 ELECTRICAL PLAN  
1/4" = 1'-0"



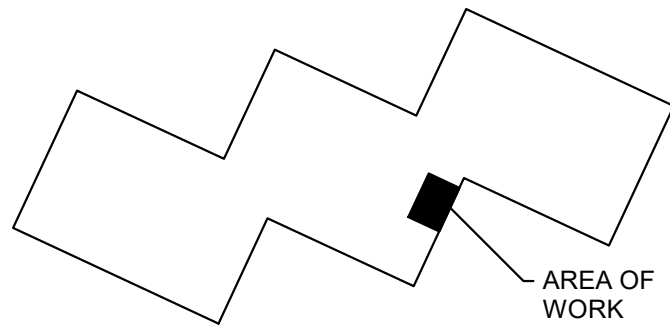
ANTHONY WEST APARTMENT  
BOILER REPLACEMENTS

BALL STATE UNIVERSITY

2301 W BETHEL AVE MUNCIE, IN 47304



@COPYRIGHT  
THESE DRAWINGS ARE THE PROPERTY OF  
CREATIVE ENGINEERING SOLUTIONS AND ARE  
NOT TO BE ON ANY OTHER PROJECT. DRAWINGS  
SHALL BE RETURNED UPON REQUEST. NOT VALID  
UNLESS SIGNED AND SEALED.



### KEY PLAN

#	REVISION	DATE
2	Addendum #02	04/23/2025

JOB NO. 2025-002.AAW  
PRODUCED AMN  
DATE 04/02/2025

ELECTRICAL FLOOR PLANS

EP101