

ANNUAL REPORT

2020



(1 JANUARY 2020 – 31 DECEMBER 2020)

TABLE OF CONTENTS

I.	<u>SCHOOL MISSION</u>	1
II.	<u>LEADERSHIP AND ORGANIZATION</u>	1
III.	<u>EXECUTIVE SUMMARY</u>	2
IV.	<u>ACCREDITATIONS</u>	4
V.	<u>ACTIVITIES AND ACHIEVEMENTS RELATED TO UNDERGRADUATE EXCELLENCE AND INNOVATION</u>	5
VI.	<u>ACTIVITIES AND ACHIEVEMENTS RELATED TO GRADUATE EDUCATION AND LIFETIME LEARNING</u>	6
VII.	<u>ACTIVITIES AND ACHIEVEMENTS RELATED TO COMMUNITY ENGAGEMENT AND IMPACT</u>	7
VIII.	<u>ACTIVITIES AND ACHIEVEMENTS RELATED TO SCHOLARSHIP AND SOCIETAL IMPACT</u>	8
IX.	<u>OPPORTUNITIES AND CHALLENGES FOR ACADEMIC YEAR 2021-2022</u>	10

I. SCHOOL OF NURSING MISSION

The School of Nursing, an academic community, embraces an innovative and collaborative approach that:

Facilitates learning through an interactive and inter-professional educational environment.

Inspires engagement in service and lifelong learning through high quality and diverse experience.

Engages in research and education to enhance quality of life, reduce health disparities, and improve access to care within communities across the lifespan.

Faculty Organization Approved: Revised, 9/23/19

II. SCHOOL LEADERSHIP AND ORGANIZATION

Leadership

Director	Linda Siktberg, PhD, RN
Associate Director for Baccalaureate Program	Debra Siela, PhD, RN, ACNS-BC, CCRN-K, CNE, RRT
Associate Director for Graduate Program	Diana Bantz, PhD, FNP-BC
Baccalaureate Program Director	Kalyn Renbarger, PhD, RN
Nursing Simulation & Information Technology Director	DeLisa Flynn, MS, RN

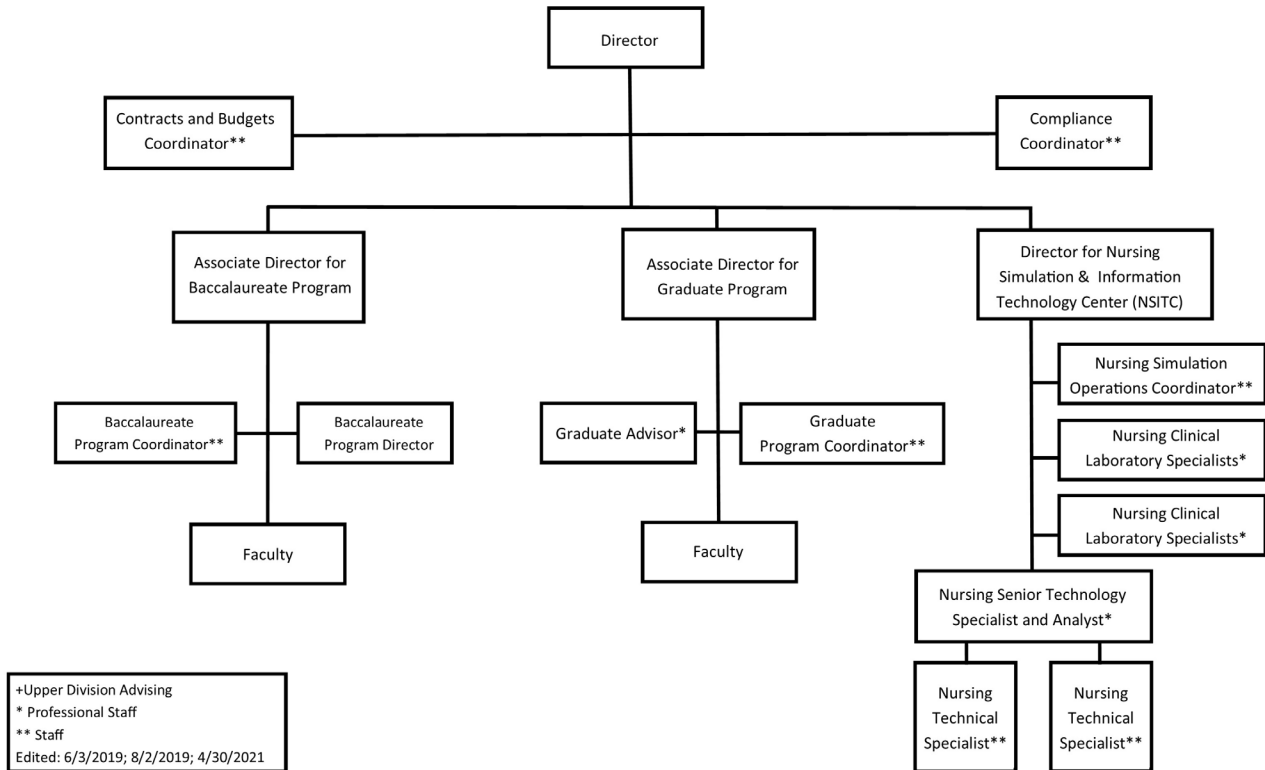
Professional Staff

Nursing Senior Technology Specialist and Analyst	Britain Bryant
Graduate Advisor	Shantelle Estes, MS
Nursing Clinical Laboratory Specialist (12 month)	Becky Fights, RN
Nursing Clinical Laboratory Specialist (10 month)	Allison Ottinger, RN

Staff

Contracts and Budgets Coordinator	Doc Hunter, MS
Compliance Coordinator	Kelly Hughes, MBA
Baccalaureate Program Coordinator	Julie Rosenbaum
Graduate Program Coordinator	Melissa Lucas
Nursing Simulation Operations Coordinator	Janet Bertram
Nursing Technical Specialist	Chris Davis
Nursing Technical Specialist	Jason Cooper

**Ball State University
School of Nursing
Organizational Chart**



III. Executive Summary

1. Program Pass Rates

- a. National Council Licensure Examination for Registered Nurse (NCLEX-RN)
N = 111 (102 passed)

Ball State pass rate (first time)	91.89%
National pass rate (first time) - Baccalaureate	90.29%
National pass rate (first time) – Baccalaureate, Associate, Diploma, invalid or special codes	86.57%
CCNE ¹ Accreditation NCLEX-RN® Pass Rate requirement	80% or higher

- b. American Academy of Nurse Practitioners Certification (AANP)

Family Nurse Practitioner	SON Pass Rate	N	Program Average	National Average
Master's	98%	56	648	576
Post-Grad	75%	4	651	559
CCNE ¹ Certification Pass Rate requirement			80% or higher	

¹ Commission on Collegiate Nursing Education

2. Baccalaureate Program Number of Graduates

Semester	Graduates
Summer 2019	26
Fall 2019	30
Spring 2020	81
Summer 2020	0 ²
Fall 2020	59
2020 Total	140

3. Master's Program Number of Graduates

Semester	Graduated
Summer 2019	21
Fall 2019	33
Spring 2020	45
Summer 2020	18
Fall 2020	22
2020 Total	85

4. Enrollment

Overall Enrollment (Table A-3)

	Spring 2020	Summer 2020	Fall 2020
Nursing	373	32	377
Pre-Nursing	512	420	592
Master's	164	118	150
Family NP	119	87	104
Leadership	45	31	46

5. Admissions

Table A-4. Baccalaureate Program: Admissions and Average Incoming GPA Fall 2019?

Semester	Admitted	Average Incoming GPA
Spring 2020	80	3.467
Summer 2020	0 ³	N/A ³
Fall 2020	90	3.754
Total	170	3.610

² Covid-19

³ Covid-19

Table A-5. Master's Program: Admissions and Average Incoming GPA

Semester	Admitted	Average Incoming GPA
Spring 2020	49	3.43
Summer 2020	0	N/A
Fall 2020	47	3.44
Total	96	3.43

Table A-6. Master's Program: Average Admissions GPAs

Master's Tracks	2020
Leadership (Educator & Administrator)	3.44
NP (Adult & Family)	3.43

6. Scholarly Release / Assigned Time

	Spring 20 Hours	Spring 20 FTE	Fall 20 Hours	Fall 20 FTE
Abebe, Sheila	3.0	.25	5.0	.42
Brand, Juanita	0.0	0.0	6.0	.5
Goldsby, Beth	4.0	.33	3.0	.25
McIntosh, Connie	3.0	.25	3.0	.25
Renbarger, Kalyn	N/A	N/A	6.0	.5
Thomas, Cindy	0.0	0.0	1.0	0.08
Twibell, Renee	3.0	.25	3.0	.25
Total	13.0	1.08	27	2.25
Average	2.2	0.18	3.9	0.32

IV. Accreditations

Program	Agency	Through Date
Baccalaureate Nursing	Commission for Collegiate Nursing Education (CCNE)	June 30, 2021
Baccalaureate Nursing	Indiana State Board of Nursing	Annually
Master's Nursing	Commission for Collegiate Nursing Education (CCNE)	June 30, 2021

V. Activities and Achievements Related to Undergraduate Excellence and Innovation

1. Graduates with Honors
 - a. Magna Cum Laude: 11 graduates
 - b. Summa Cum Laude: 7 graduates
 - c. Cum Laude: 54 graduates
2. Beta Rho at-large Chapter of Sigma Theta Tau International (Sigma) Nursing Honorary Inducted 6 new members.
3. National Ranked & Recognized Programs
 - a. National League for Nursing (NLN) Center of Excellence (COE) second designation – Enhance Student Learning and Professional Development 2017 – 2022 for Baccalaureate and Master's.

Goals of NLN COE – Identify and reward schools that excel in creating environments that enhance student learning and professional development; continuous progress improvement of their school; encourage nursing education research; encourage development of innovative schools that attract and retain highly qualified students and faculty; and promote excellence in nursing education.

4. The Nursing Simulation and Information Technology Center has provided 34 unique and distinct simulation experiences during this calendar year. The combination of individual and group simulations has accounted for 1,409 simulated learning experiences.
5. In a partnership with the Athletic Training Department, the Nursing Simulation and Information Technology Center provided 3 unique simulations where students in the Athletic Training Department had the opportunity to practice skills and use clinical reasoning.
6. The Nursing Simulation and Information Technology Center partnered with other disciplines in the College of Health to provide simulated learning experiences in a realistic practice setting. Students benefiting from these experiences were from Counseling Psychology, Speech Pathology and Audiology, Dietetics, and Athletic Training.
7. The Nursing Simulation and Information Technology Center coordinated multiple marketing photography and video filming events depicting various hospital, office, and home-based simulation lab rooms.
8. The Nursing Simulation and Information Technology Center partnered with nursing and theater faculty in developing 10 unique scripts for theater students. The theater students increased the fidelity of the simulations by role playing family members in multiple runs of 9 different simulations across the undergraduate nursing clinical courses.
9. The Nursing Simulation and Information Technology Center created workshop materials for nursing and other College of Health disciplines to facilitate their own development of unique simulation opportunities for their students.

10. The Nursing Simulation and Information Technology Center created and communicated policies for COVID simulation lab based on CDC guidelines, and coordinated major efforts for safe social distancing in all 38 simulation lab rooms.
11. The Nursing Simulation and Information Technology Center continued supporting students and faculty with technology due to increased simulation lab video recording and online class modality during the pandemic.

VI. Activities and Achievements Related to Graduate Education and Lifetime Learning

1. National Ranked & Recognized Programs
 - a. National League for Nursing (NLN) Center of Excellence (COE) second designation – Enhance Student Learning and Professional Development 2017 – 2022 for Baccalaureate and Master’s.

Goals of NLN COE – Identify and reward schools that excel in creating environments that enhance student learning and professional development; continuous progress improvement of their school; encourage nursing education research; encourage development of innovative schools that attract and retain highly qualified students and faculty; and promote excellence in nursing education.

- b. U.S. News & World Report 2020– Best Online Programs: No. 17 – Master’s Degree in Nursing
2. The Nursing Simulation and Information Technology Center collaborated with Dietetics faculty in creating and running their first high fidelity simulation, Pancreatitis, for graduate students.

VII. Activities and Achievements Related to Community Engagement and Impact

1. Immersive Learning Opportunities (See Appendix A.)

Projects	Faculty	Students	Courses
5	3	50	2
Mental Health Education for IU/Ball Hospital Staff	Beth Goldsby	17	NUR 350
Population Focused Project: Babysitting Safety	Barbara Phelps	10	NUR 404
Population Focused Project: Preparing Grace Evangelical Lutheran Church for a Healthy Winter	Barbara Phelps	10	NUR 404
Population Focused Project: Mitchell Early Childhood and Family Center - Families of Essential Workers	Barbara Phelps	4	NUR 404
Muncie Children's Museum Healthy Kids Fair	Amy Yakos	9	NUR 404

2. Experiential and Service Learning

- Baccalaureate program – 945 clinical hours, including on campus laboratory, simulations (low and high-fidelity simulators), hospital, and community-based settings
- RN to BS program – 180 clinical hours
- Master's Family Nurse Practitioner - 690 clinical hours
- Master's Nurse Educator – 270 clinical hours
- Master's Nurse Administrators – 225 clinical hours

3. Students in Clinical Settings Nationwide (See Appendix C.)

Sites	Agencies / Companies	All Cities	Indiana Cities	Indiana Counties	States
179	94	90	76	58	10

- Multiple in-person tours of Nursing facilities took place in 2020 prior to COVID-19 closures for community, university, prospective students, and other college populations. After March 2020, tours for prospective students/families were done twice a week virtually, including photos of nursing students and hospital and home-based simulation lab spaces.
 - January 15, 2020 – Freshman Advisors STIC tour
 - January 23, 2020 – BSU Master Planning Committee STIC tour
 - February 7, 2020 – Wellness Matters STIC tour
 - February 14, 2020 – Honors College STIC tour
 - February 21, 2020 – Vendor tour of SITC for McKesson Rep.
 - February 25, 2020 – Whitely Neighborhood Association Meeting
 - February 26, 2020 – College of Architecture STIC tour
 - March 3, 2020 – Manchester University STIC tour
 - March 11, 2020 – CBC Meeting (Community Business Connections)

5. Featured stories on Facebook of BSU graduates working in the field during the pandemic. The School of Nursing has also taken advantage of opportunities to increase its social media presence. The School's Facebook page has a total of 1,297 likes. The Ball State Student Nursing Association has also enjoyed 547 likes with a total of 993 page views.

VIII. Activities and Achievements Related to Scholarship and Societal Impact

1. Conference Presentations (See Appendix D.)

DEPT	Total	National / International	Regional / State	Local	Student Lead	% National/ International
SON	23	12	6	5	1	52.17%

2. External Grants (See Appendix D.)

- a. Proposals/Submissions

DEPT	Total Proposals	SON PIs & Co-PIs	Total > \$25,000	Requested Funds	% tenure/tenure-line faculty with assigned time for scholarship that were PI on external proposals
SON	7	5	4	\$606,362	57.14%

- b. External Funding Data

DEPT	# Funded	# With IDC	Total FY Funding	Mean Size	IDC Recovered
SON	4	3	\$156,143	\$39,036	\$0

3. Faculty Engagement in Professional Organizations (See Appendix B.)

American Association of Nurses, Indiana State Nurses Association, National League for Nursing, Commission on Collegiate Nursing Education, American Association of Colleges of Nursing, Sigma Theta Tau International and Beta Rho at-large Chapter (Ball State University School of Nursing and Anderson University), American Association of Critical Care Nurses, International Nursing Association for Clinical Simulation and Learning, Society for Simulation in Healthcare, American Organization for Nursing Leadership, American Association of Nurse Practitioner, National Association of Nurse Practitioners in Women's Health, and American Association of Clinical Nurse Specialist

4. Publications (See Appendix D.)

- a. Refereed Journal Articles (Published): 13
- b. Refereed Journal Articles (In-Press): 1
- c. Refereed Journal Articles (Submitted): 6
- d. Journal Articles (Work-in-Progress): 1
- e. Student-Lead Publications: 1

5. Refereed Journal Editorial Boards (See Appendix B.)

Faculty Member	Journals
Ali, Nagia	<i>Health Behavior and Policy Review</i>
Goldsby, Beth	<i>International Journal of Nursing Sciences and Clinical Practices</i>
McIntosh, Connie	<i>NASN School Nurse</i>
Siela, Debra	<i>Critical Care Nurse</i>
Thomas, Cindy	<i>Clinical Simulation in Nursing</i>

6. Faculty Honors/Awards

Faculty Member(s)	Award	Organization
McIntosh, Connie	Outstanding Alumnus	Ball State Nursing Alumni Society

7. Faculty National Engagement – Other (See Appendix B.)

Faculty Member	Activity	Organization
Abebe, Sheila	Editorial Advisory Council	<i>Journal of School Health</i>
Brand, Juanita	Ambassador	National League for Nursing
Siktberg, Linda	On-site evaluator team leader	Commission on Collegiate Nursing Education
Siela, Debra	Reviewer	<i>Clinical Nurse Specialist</i>
	Reviewer	<i>Critical Care Nurse</i>
	Reviewer	<i>American Journal of Critical Care</i>
	Practice Alert Review Panel	<i>American Association of Critical Care Nurses</i>
Thomas, Cindy	Reviewer	<i>Nurse Education Today</i>
	Reviewer	<i>Journal of Nursing Education and Practice</i>
	Reviewer	<i>Clinical Simulation in Nursing</i>
	Reviewer	<i>Journal of Christian Nursing</i>
	Reviewer	<i>Nurse Educator</i>
Twibell, Renee	Continuing Education Committee	American Association of Critical Care Nurses
	Ambassador	American Association of Critical Care Nurses
	Reviewer	<i>Heart & Lung Journal</i>
	Reviewer	<i>International Journal of Nursing Studies</i>
	Reviewer	<i>Critical Care Nurse</i>
	Reviewer	<i>American Journal of Critical Care</i>

IX. Opportunities and Challenges for Academic Year 2021-2022

1. Advertise, interview, hire, and retain doctoral-prepared tenure-line faculty. (Ball State University salaries are not competitive with academic salaries in the Midwest region based on the American Association of Colleges of Nursing's *Salaries of Instructional and Administrative Nursing Faculty in Baccalaureate and Graduate Programs in Nursing*.)
2. Succession planning - A process for accessing, identifying, and mentoring/coaching internal faculty members who meet the minimum qualifications and have the potential to fill leadership positions in the School of Nursing.
3. Expand academic and clinical partnerships for clinical experiences, faculty capacity, collaborative and inter-professional research, and faculty practice.
4. Implement and manage the new incentive budget model for the School of Nursing.

APPENDIX A: IMMERSIVE LEARNING

Title: Mental Health Education for IU/Ball Hospital Staff

- I. Overview
 - A. Description of Project: Engaged with Meridian Services Staff to provide researched based education to staff. The education included posters on substance abuse, stress and coping, personality disorders, and assault precautions.
 - B. Course(s): NUR 350 Psych/Mental Health
 - C. Number of Students Involved: 17
- II. Immersive Learning Characteristics
 - A. Number of Credit Hours: 4
 - B. Client/Community Partner: Meridian Services
 - C. Cities Impacted: Muncie
 - D. Counties Impacted: Delaware
 - E. States Impacted: Indiana
 - F. Countries Impacted: United States
 - G. Faculty Mentor: Goldsby, E. A.
 - H. Student Disciplines Represented: Undergraduate Nursing Students
 - I. Tangible Products: Posters, teaching materials to be used by staff for ongoing staff education
 - J. Student Learning Outcomes: Provide evidence-based education related to the needs of the staff. Develop teaching-learning materials and produce teaching tools.
Involved group processing.
 - K. Describe how the experience helps students define a career path or connect to a profession/industry: Involved in evidenced-based practice that is necessary for their careers as nurses. Involve with group setting that provide for interprofessional education.
 - L. Describe the real-world problem: Inter-profession education is needed in healthcare in a variety of settings.

Title: Population Focused Project: Babysitting Safety

- I. Overview
 - A. Description of Project: Education on safety and injury prevention, and basic emergency response was provided to adolescent girls who are members of a babysitting club in a rural community. Resources for additional education were provided.
 - B. Course(s): NUR 404 - 05K Community Health (Fall 2020)
 - C. Number of Students Involved: 10 (Fall 2020)
- II. Immersive Learning Characteristics
 - A. Number of Credit Hours: 4
 - B. Client/Community Partner: Adolescent Girls in Randolph County (Babysitting Club)
 - C. Cities Impacted: Farmland and Parker City
 - D. Counties Impacted: Randolph
 - E. States Impacted: Indiana
 - F. Countries Impacted: United States
 - G. Faculty Mentor: Barbara Phelps
 - H. Student Disciplines Represented: Nursing

- I. Tangible Products: Community participants will be able to:
 - 1. Identify safety and injury prevention measures when alone or babysitting, evidenced during Kahoot evaluation
 - 2. Demonstrate knowledge of hands-only CPR by teach-back and return demonstration
 - 3. Demonstrate knowledge of the Heimlich maneuver by teach-back and return demonstration
- J. Student Learning Outcomes:
 - 1. Applies theoretical knowledge of nursing, public health, and related disciplines to provide therapeutic nursing interventions in community settings.
 - 2. Applies the nursing process in primary, secondary, and tertiary levels of prevention across the lifespan in community settings.
 - 3. Analyzes health care system and policy issues and trends related to individual society and global needs that impact community health nursing practice.
 - 4. Applies research findings from public health science, nursing science, and epidemiology to the nursing process in primary, secondary, and tertiary levels of prevention.
 - 5. Uses effective communication to collaborate with community health professionals, peers, faculty, clients, and other members of the community
 - 6. Demonstrates professionalism in nursing practice.
- K. Describe how the experience helps students define a career path or connect to a profession/industry: Students use communication and assessment skills to gather and analyze data, identify priority health needs for an aggregate, then develop and evaluate an intervention. These are all skills utilized in nursing.
- L. Describe the real world problem: Adolescents in the rural community have a knowledge deficit in safety, injury prevention and caregiver roles.

Title: Population Focused Project: Preparing Grace Evangelical Lutheran Church for a Healthy Winter

- I. Overview
 - A. Description of Project: Community Health Nursing students provided middle-aged parishioners of Grace Evangelical Church with education related to healthy habits and recommended health screenings.
 - B. Course(s): NUR 404 - 06K Community Health (Fall 2020)
 - C. Number of Students Involved: 10 (Fall 2020)
- II. Immersive Learning Characteristics
 - A. Number of Credit Hours: 4
 - B. Client/Community Partner: Grace Evangelical Church
 - C. Cities Impacted: Muncie
 - D. Counties Impacted: Randolph
 - E. States Impacted: Indiana
 - F. Countries Impacted: United States
 - G. Faculty Mentor: Barbara Phelps
 - H. Student Disciplines Represented: Nursing

- I. Tangible Products:
 - 1. Middle-aged parishioners will identify and return demonstrate five simple exercises to decrease their risk for chronic disease.
 - 2. Middle-aged parishioners will discuss healthy meals they enjoy as well as healthy eating to decrease their risk for chronic disease
 - 3. Middle-aged parishioners will verbalize the importance that exercise and healthy eating have on their overall health and wellness.
- J. Student Learning Outcomes:
 - 1. Applies theoretical knowledge of nursing, public health, and related disciplines to provide therapeutic nursing interventions in community settings.
 - 2. Applies the nursing process in primary, secondary, and tertiary levels of prevention across the lifespan in community settings.
 - 3. Analyzes health care system and policy issues and trends related to individual society and global needs that impact community health nursing practice.
 - 4. Applies research findings from public health science, nursing science, and epidemiology to the nursing process in primary, secondary, and tertiary levels of prevention.
 - 5. Uses effective communication to collaborate with community health professionals, peers, faculty, clients, and other members of the community
- K. Describe how the experience helps students define a career path or connect to a profession/industry: Students use professional communication and assessment skills to identify priority health needs, develop an evidence-based intervention and evaluate the intervention for a community aggregate.
- L. Describe the real-world problem: The aggregate in this community has higher than state and national averages of behavior and lifestyle related health conditions, such as obesity. The intervention aims to help promote health and prevent negative health outcomes.

Title: Population Focused Project: Mitchell Early Childhood and Family Center – Families of Essential Workers

- I. Overview
 - A. Description of Project: Digital Pamphlet created to provide resources and stress reduction/coping strategies to families of essential workers utilizing the Mitchell Early Childhood and Family Center during the summer of 2020 COVID-19 pandemic.
 - B. Course(s): NUR 404 - 800 Community Health (Summer Session 2020)
 - C. Number of Students Involved: 4 (Summer Session 2020)
- II. Immersive Learning Characteristics
 - A. Number of Credit Hours: 4
 - B. Client/Community Partner: YMCA of Muncie and Mitchell Early Childhood and Family Center
 - C. Cities Impacted: Muncie
 - D. Counties Impacted: Delaware
 - E. States Impacted: Indiana
 - F. Countries Impacted: United States
 - G. Faculty Mentor: Barbara Phelps

- H. Student Disciplines Represented: Nursing RN-BS
- I. Tangible Products:
 - Digital Pamphlet with information aimed at meeting Healthy People 2020 Goals:
 - 1. Increase the proportion of parents who report a close relationship with their child, who read to their young child, and who use positive communication skills, ideas, or talk about things that matter.
- J. Student Learning Outcomes:
 - 1. Applies theoretical knowledge of nursing, public health, and related disciplines to provide therapeutic nursing interventions in community settings; research findings from public health science, nursing science, and epidemiology to the nursing process in primary, secondary, and tertiary levels of prevention; and the nursing process in primary, secondary, and tertiary levels of prevention across the lifespan in community settings.
 - 2. Analyzes health care system and policy issues and trends related to individual society and global needs that impact community health nursing practice.
 - 3. Uses effective communication to collaborate with community health professionals, peers, faculty, clients, and other members of the community
- K. Describe how the experience helps students define a career path or connect to a profession/industry: Engagement in this project helps students connect with the community health nursing profession as they communicate, assess and identify priority health needs for individuals and a community. This project also helps students utilize research findings and apply these findings to interventions aimed at improving health outcomes for these individuals and the community.
- L. Describe the real-world problem: Stress and anxiety for families of essential workers with children during Summer 2020 of the COVID-19 pandemic.

Title: Muncie Children's Museum Healthy Kids Fair

- I. Overview
 - A. Description of Project: This entire project was about focusing on a population in Delaware county and researching priority problems for the aggregate. The NUR 404 group determined through research, interviews and observations that the spread of illness, caretaker responsibility, nutrition, poverty, and obesity were the top 5 problems for this aggregate. The students decided to focus our intervention on the spread of illness because it can cause children to miss school, parents to take off work, create medical bills, and may cause even more spread of illness because of the lack of education. For our intervention, the students participated in the *Healthy Kids Event* at the Children's Museum. The student had two different stations for participants of the Health Fair to visit. One station was focused on parent education. This station included pamphlets about the spread of illness, how to prevent it like proper hand washing, and when their child should stay home from school when experiencing certain symptoms like a high fever. The other station was a hands-on activity that showed how germs spread. We had glow in the dark "germs" that we put on balloons. We had the children put on gloves and play with the balloons for a few minutes. Then we had them show us their hands under a black light and it showed all the "germs" on the balloon and on their gloves. We were able to explain how we don't always see germs on our hands, but they are there and why it's important to wash our hands. The children

were very surprised to see all the “germs” on their gloves and responded well to our intervention. The children then all washed their hands to see all the “germs” washed away.

- B. Course(s): NUR 404 Community Health
- C. Number of Students Involved: 9
- II. Immersive Learning Characteristics
 - A. Number of Credit Hours: 4
 - B. Client/Community Partner: Muncie Children's Museum
 - C. Cities Impacted: Muncie
 - D. Counties Impacted: Delaware
 - E. States Impacted: Indiana
 - G. Faculty Mentor: Yakos, A. C.
 - H. Student Disciplines Represented: Nursing
 - I. Tangible Products: Excerpt from student submission:
 - J. Student Learning Outcomes:
 - 1. Applies theoretical knowledge of nursing, public health, and related disciplines to provide therapeutic nursing interventions in community settings.
 - 2. Applies the nursing process in primary, secondary, and tertiary levels of prevention across the lifespan in community settings.
 - 3. Applies research findings from public health science, nursing science, and epidemiology to the nursing process in primary, secondary, and tertiary levels of prevention.
 - 4. Uses effective communication to collaborate with community health professionals, peers, faculty, clients, and other members of the community
 - 5. Demonstrates professionalism in nursing practice.
 - K. Describe how the experience helps students define a career path or connect to a profession/industry: The Population Focused Project provides an opportunity for students to work as a team. The team selects an aggregate to complete a community assessment on (primary and secondary data which includes key informant interviews, windshield survey, participation observation, public health statistics, Healthy People 2020, etc.), identify and prioritize a health needs/problem list, write a community diagnosis, and develop and evaluate a plan for education addressing the priority problem. The team provides education to the aggregate and community partner. Materials created are shared for future use by the community partner. This experience provides students with the opportunity to work as a team to research, evaluate, communicate, and educate which are all necessary for a successful nursing career.
 - L. Describe the real world problem: The spread of illness in children can lead to missed school days, missed work days for parents, medical bills, and increased spread of illness.

APPENDIX B: FACULTY ENGAGEMENT AND LEADERSHIP

Abebe, Sheila Y.

Department/program

Committee Member, Faculty Council Representative. (September 2020 - Present).
Committee Member, Nurse Practitioner Advisory Sub-committee. (September 2018 - Present).
Committee Member, Master's Curriculum. (January 2017 - Present).
Committee Chair, Faculty Organization. (April 2019 - May 2020).

College

Volunteer, Healthy Lifestyle Education. (January 2019 - Present).
Member, Leadership Team HLC, Fisher's Institute of Health and Well Being. (August 2017 - Present).

University

Committee Member, Faculty Salary and Benefits. (September 2020 - Present).
Committee Member, Provost Task Force Faculty Compensation and Benefits Task Force. (September 2020 - Present).
Committee Member, University Level Strategic Implementation Plan for Academic (USIP) for Academic Innovation. (November 2018 - Present).
Committee Member, Tenure Track Advisory Group. (August 2018 - May 2020).

Professional

Committee Member, American School Health Association Research and Publication Whole Child Journal Proposal. (April 2019 - Present).
Sub-Committee Member for Journal of School Health, American School Health Association. (February 2019 - Present).
Editorial Advisory Council, American School Health Association. (January 2019 - Present).
Committee Member, American School Health Association Research and Publications. (December 2018 - Present).
Ad-Hoc Reviewer, IU Health Ball Memorial Nursing Research. (January 2020 - February 2020).
Reviewer, National League for Nursing. (December 2019 - January 2020).
Member, National League for Nursing.

Public/community

Committee Member, Addictions Coalition of Delaware County. (July 2020 - Present).
Playing Tennis Doubles to Raise Funds for Breast Cancer Resources for Women. (August 2019 - Present).
Attendee, Alliance for Healthier Indiana. (June 2018 - Present).

Ali, Nagia S.

Professional

Reviewer/referee, Cancer Nursing. (January 2000 - May 2020).
Ad-Hoc Reviewer, Health Behavior and Policy Review. (May 2019 - May 2020).
Ad-Hoc Reviewer, American Journal of Health Behaviors. (January 2019 - May 2020).
Ad-Hoc Reviewer, QS Global Academic Evaluation. (March 2020).
Ad-Hoc Reviewer, SLACK Incorporated. (February 2020).
Associate Editor, Health Behavior & Policy Reviews. (January 2019 - May 2020).
Editorial Board Member, Health Behavior and Policy Review. (January 2018 - May 2020).
Member, National League for Nursing.

Allen, Roberta

Department/program

Committee Member, Faculty Organization Committee.
Committee Member, Baccalaureate Curriculum Committee. (August 2019 – May 2021).

Professional

Member, National League for Nursing.

Baker, Anna S.

Department/program

Committee Member, Faculty Organization Committee. (August 2017 - Present).
Committee Member, Baccalaureate Curriculum Committee. (2017 - Present).
Subcommittee Member – Baccalaureate Outcomes and Evaluation Subcommittee. (2020 – Present)

Professional

ICU RN. (January 1997 - Present).
Member, National League for Nursing.

Bantz, Diana L.

Department/program

Committee Chair, Master's Admission & Progression Committee. (May 2010 - Present).
Committee Chair, Master's Curriculum Committee. (May 2010 - Present).
Committee Chair, Nurse Practitioner Advisory Sub-committee.
Academic Advising for School of Nursing - Master's Students. (1993 - Present).
Committee Secretary, Promotion & Tenure Committee. (August 2019 – May 2020).
Committee Vice-Chair, Promotion & Tenure Committee. (August 2020 – May 2021).
Committee Member, Non-Tenure-Line Clinical Faculty Promotion. (August 2019- Present).
Committee Member, Faculty Organization Committee. (August 2019 – May 2021).

College

Committee Member, Interprofessional Education & Practice Committee. (August 2019 – May 2021).
Committee Member, Graduate Curriculum Committee. (August 2019 – May 2021).

University

Committee Member, Academic Freedom and Ethics. (
Committee Member, Grievance Appeals Board.

Professional

Member, National League for Nursing.

Beane, Heather H.

Department/program

Committee Member, Faculty Organization Committee.

University

Ball State University Nursing Alumni Society. (2018 - Present).

Professional

IU BMH, CIC.

Member, National League for Nursing.

Benner, Susan

Department/program

Committee Member, Faculty Organization Committee.

Committee Member, Baccalaureate Curriculum Committee. (August 2019 – May 2021).

Professional

Member, National League for Nursing.

Member, Beta Rho Chapter at-large of sigma Theta Tau International.

Member, Golden Key.

Member, Heart and Soul Clinic - Westfield. (July 2020 - Present).

Brand, Juanita

Department/program

Committee Vice-Chair, Promotion and Tenure Committee. (August 2019 – May 2020).

Committee Secretary, Promotion and Tenure Committee. (August 2020 – May 2021).

Committee Member, Faculty Organization Committee. (August 2019 – May 2021).

Committee Member, Master's Curriculum Committee. (August 2019 – May 2021).

Committee Member, Non-Tenure-Line Clinical Faculty Promotion. (August 2019- May 2021).

Master's CCNE Sub-Committee. (2019-2020).

NLN (National League for Nursing) Ambassador, School of Nursing. (August 2017-May 2021).

College

Committee Member, Scholarship Committee – early tenure-line faculty proposals.

University

Committee Member Alternate, Institutional Review Board Committee. (2016 - Present).

Professional

Reviewer/referee, American Public Health Association. (February 2016 - Present).

Member, National League for Nursing.

Chapter Vice-President, Beta Rho Chapter at-large of sigma Theta Tau International.

Public/community

Reviewer/referee, Indiana State Master Planning Research Committee. (July 2015 - Present).

Reviewer, State-wide Master Research Planning Committee. (Summer 2020).

Consulting

Nurse Practitioner, Marion County Health Department, Indianapolis, IN. (1991 - Present).

Burden, Marsha L.

Department/program

Committee Member, Baccalaureate Curriculum Committee. (August 2019 – May 2021).
Committee Member, Faculty Organization Committee. (August 2019 – May 2021).

University

Committee Member, Suicide Prevention Committee. (January 2018 - Present).

Professional

Board Member, NAMI Board. (January 2018 - Present).
Member, National League of Nursing.
Committee Member, Nurse Leader Review Committee - Beta Rho Chapter at-large of Sigma
Theta Tau International. (August 2019 – May 2021).
Member, Beta Rho Chapter at-large of Sigma Theta Tau International.

Consulting

Community Hospital North.
Consulted and helped develop training workshop at Community Hospital North relating to
Psychiatric Nursing to help the new graduate on RN who has never worked on
Psychiatric Unit before

Chapman, Carrie

Department/program

Committee Member, Faculty Organization Committee.

Cooper, Robin

Department/program

Committee Member, Faculty Organization Committee.
Committee Member, Non-Tenure-Line Clinical Faculty Promotion. (August 2019 – May 2020).
Chair, Non-Tenure-Line Clinical Faculty Promotion. (August 2020 – May 2021).

Professional

Member, National League of Nursing.

Davis, Amanda

Department/program

Committee Secretary, Faculty Organization Committee. (August 2019 – May 2021).

Professional

Member, National League of Nursing.

Duncan, Jessica S.

Department/program

Committee Chair, Simulation and technology subcommittee. (August 2019 - Present).
Committee Member, Baccalaureate Curriculum Committee. (August 2016 - Present).
Subcommittee Member, Teaching and Outcomes Subcommittee. (August 2016 - Present).

University

Secretary, Ball State University Nursing Alumni Board. (August 2015 - Present).

Professional

Member, National League of Nursing.

Flynn, Delisa G.

Department/program

Committee Member, Teaching and Outcome Subcommittee. (August 2016 - Present).
Subcommittee Member, Simulation and Technology Subcommittee. (August 2018 - Present).
Faculty Advisor, Ball State Nursing Association Advisor. (August 2013 - Present).
Committee Member, Faculty Organization Committee. (August 2012 - Present).
Committee Member, Baccalaureate Curriculum Committee. (2012 - Present).

College

Secretary, Undergraduate Curriculum Committee. (August 2017 - Present).

University

Board Member, Nursing Alumni Board. (August 2005 - Present).

Professional

ICU RN. (January 2005 - Present).
Member, National League of Nursing.

Goldsby Anne, Elizabeth A.

Department/program

Committee Member, Baccalaureate Admission and Progression. (August 2020 – May 2021).
Committee Member, Baccalaureate Curriculum Committee. (August 2020 - May 2021).
Committee Member, Teaching and Policy Committee. (August 2020 - May 2021).
Committee Member, Faculty Organization Committee. (August 2019 - May 2021).
Committee Chair, School of Nursing Inclusive Excellence. (December 2020 – May 2021).

College

Committee Member, Tenure Track Advisory Committee. (August 2020 – May 2021).
Committee Member, Diversity & Inclusion Committee. (August 2020 - May 2021).
Committee Member, SBIRT IPE. (January 2020 - May 2021).

University

Committee Member, Undergraduate Education Committee. (August 2019 - May 2021).

Professional

Committee Member, NLN Foundation Scholarships Selection Committee. (April 2020 - Present).
Reviewer/referee, American Public Health Association. (January 2019 - Present).
Editorial Board Member, International Journal of Nursing Sciences and Clinical Practices. (July 2020 - July 2024).

Public/community

Committee Member, Addictions Coalition of Delaware County. (August 2020 - Present).

Humphrey, Kathryn E.

Department/program

Committee Member, Faculty Organization Committee. (August 2007 - Present).

Committee Member, Interview Training. (January 2020).

Professional

Instructor, Taught CPR Classes to nursing students. (December 2010 - Present).

Member, National League of Nursing. (2007 - Present).

Public/community

Instructor, American Heart Association BLS Instructor. (2001 - Present).

Nurses Health Study II. (1989 - Present).

Johnson, Lindsay E.

Department/program

Committee Member, Nurse Practitioner Advisory Subcommittee. (August 2017 - Present).

Professional

NP - Family Practice & Geriatrics/Outpatient Cognitive Care (November 2014 - Present).

Member, National League of Nursing.

Mahmoodi, Mahnaz

Department/program

Committee Member, Baccalaureate Curriculum Committee. (2004 - Present).

Committee Member, Faculty Organization Committee. (August 2019 – May 2021)

Matthews, Melissa

Department/program

Committee Member, Faculty Organization Committee. (August 2019 – May 2021)

Committee Chair-Elect, Non-Tenure-line Clinical Salary Committee. (August 2019 – May 2021).

University

Board Member, Nursing Alumni Board. (August 2019 – August 2021).

Member, Alumni Council. (August 2019 – August 2021).

Professional

NP – Women's Health – Community Health Network, Anderson.

Member, Coalition of Advanced Practice Registered Nurses of Indiana (CAPNI).

Member, Nurse Practitioners in Women's Health (NPWH).

Member, Association of Women's Health, Obstetric, and Neonatal Nurses (AWHONN).

Member, National League of Nursing.

May, Kari

Department/program

Committee Member, Faculty Organization Committee. (August 2019 – May 2021).

Professional

Member, National League of Nursing.

McIntosh, Constance

Department/program

Committee Chair, Faculty Organization Committee. (August 2020 – May 2021).

Committee Vice-Chair, Faculty Organization Committee. (August 2019 – May 2020).

Committee Member, Master's Curriculum Committee. (August 2019 – May 2021).

Senate Representative, SON Representative. (January 2020 – April 2020)

College

Senate Representative, Tenure Track Advisory Committee. (August 2020 – April 2021).

University

Global Engagement Committee (GEC). (August 2019 - May 2021).

Secretary, Senate Representative. (April 2017 - April 2021).

Committee Member, Faculty Salary and Benefits Committee. (August 2017 - May 2020).

Vice Chair, Faculty Council. (August 2019 - April 2020).

Professional

Committee Member, American Psychological Association (APA) Board of Educational Affairs (BEA) Standing Appeal Panel. (January 2020 - December 2021).

Advisory Board, Northeast Indiana Area Health Education Center. (August 2019 - May 2021).

Reviewer/referee, Psychology in The Schools. (PITS; June 2021).

Reviewer/referee, National Association of School Nurses. (NASN; June 2020).

Editorial Board Member, NASN School Nurse. (January 2020).

Member, National League of Nursing.

Member, Beta Rho Chapter at-large of Sigma Theta Tau International.

Public/community

Committee Member, Delaware County School Safety Commission. (April 2019 - Present).

Advisory Board, Education Support Hub. (April 2020 - June 2021).

Minnick, Dan

Department/program

Committee Member, Faculty Organization Committee. (August 2019 – May 2021).

College

Committee Member, IPE Faculty Development Committee. (August 2019 – May 2021).

Professional

Member, National League of Nursing.

Phelps, Barbara

Department/program

Committee Chair, Non-Tenure-line Clinical Salary Committee. (2020 - Present).
Committee Member, Faculty Organization Committee. (January 2018 - Present).
Committee Member, Baccalaureate Outcomes and Evaluation Committee. (2018 - Present).
Secretary, Baccalaureate Curriculum Committee. (January 2018 - Present).

Professional

Member, National League of Nursing.

Public/community

Volunteer, Monroe Central Athletic League. (2015 - Present).

Pyron, Marjorie L.

Department/program

Committee Member, Faculty Organization Committee. (August 2013 – May 2021).
Committee Member, Baccalaureate Curriculum Committee. (January 2013 – May 2021).

Professional

Member, National League of Nursing.
Member, Association of Women's Health, Obstetric, and Neonatal Nurses (AWHONN).
Member, Lamaze International.

Renbarger, Kalyn M.

Department/program

Baccalaureate Program Director. (January 2020 - Present).
Reviewer/referee, School of Nursing Academic Honors in Writing Liaison. (August 2019 - Present).
Member, Clinical Non-Tenure-Line Clinical Faculty Promotion. (October 2018 – May 2020).
Committee Member, Baccalaureate Teaching and Policy Committee. (October 2018 – May 2021).
Committee Member, Baccalaureate Curriculum Committee. (August 2017 – May 2021).
Committee Member, Faculty Organization. (August 2010 – May 2021).
Committee Member, Baccalaureate Admission and Progression Committee (January 2020-May 2021).

Professional

International Society of Psychiatric Mental Health Nurses. (June 2020 - Present).
Member, National League of Nursing.

Public/community

Maternal Mental Health Coalition of Delaware County. (June 2020 - Present).
Addictions Coalition of Delaware County (August 2020-Present).

Shafer, Marsann L.

Department/program

Committee Member, Baccalaureate Curriculum Simulation and Technology Sub-committee. (January 2019 – May 2021).

Secretary, Baccalaureate Admissions and Progressions Committee. (August 2015 – May 2021).

Committee Member, Baccalaureate Curriculum Committee. (August 2012 – May 2021).

Committee Member, Faculty Organization Committee. (August 2009 – May 2021).

Professional

Member, National League of Nursing.

Shelley, Allison

Department/program

Committee Member, Faculty Organization Committee. (August 2009 – May 2021).

Professional

Member, National League of Nursing.

Siela, Debra L.

Department/program

Committee Chair, School of Nursing Baccalaureate Admission and Progression Committee. (2018 - Present).

Committee Chair, School of Nursing Baccalaureate Curriculum Committee. (2018 –Present).

Committee Chair, School of Nursing Promotion and Tenure Committee. (August 2012 – Present).

Committee Member, Masters Curriculum Committee. (2004 - May 2021).

Committee Member, Non-Tenure-Line Clinical Faculty Promotion. (August 2019 - Present).

College

Committee Chair, College of Health Promotion and Tenure Committee. (September 2016 - Present).

Professional

Editorial Board Member, American Association of Critical Care Nurses - Critical Care Nurse Journal. (April 2019 - Present).

Reviewer/referee, National Association of Clinical Nurse Specialists (NACNS) Clinical Nurse Specialist The International Journal for Advanced Nursing Practice. (January 2010 - Present).

Reviewer/referee, American Association of Critical Care Nurses - Critical Care Nurse Journal. (2008 - Present).

Reviewer/referee, American Association of Critical Care Nurses - American Journal of Critical Care. (January 2006 - Present).

Member, National League of Nursing.

Member, Beta Rho Chapter at-large of Sigma Theta Tau International.

Consulting

Siela Nurse Consultants, <http://sielanurseconsultants.com>. (August 2010 - Present).

I am a clinical nurse specialist (CNS) consultant.

Siktberg, Linda L.

Department/program

Committee ex official Member, Baccalaureate Admission & Progression. (2001 - Present).
Committee ex official Member, Baccalaureate Curriculum. (2001 - Present).
Committee ex official Member, Non-Tenure-Line Clinical Faculty Salary. (2001 - Present).
Committee ex official Member, Master's Admission & Progression. (2001 - Present).
Committee ex official Member, Master's Curriculum. (2001 - Present).
Committee ex official Member, Promotion & Tenure. (2001 - Present).
Committee ex official Member, Tenure/Tenure-Track Salary. (2001 - Present).
Committee Member, Non-Tenure-Line Clinical Faculty Promotion. (August 2019 - Present).
Mentoring the two new Upper Division Advisors about nursing; assisting with advising nursing student in collaboration with Upper Division Advisors. (2020-2021).

College

Member, College of Health Leadership.
Committee Member, Search Committee for Director of External Affairs & Community Engagement. (February – May 2020).

University

Committee Member, IRB. (2007 - Present).
Member, Academic Leadership Group.
Board Member, Nursing Alumni Society.
Committee Member, Search Committee for College of Health Dean. (November 2020 – March 2021).
Academic Ethics Committee and Academic Ethics Hearing, College of Health Representative. (2020 – 2021).
Committee Member, Provost Prize Committee. (2020)
Committee Member, Outstanding Awards Review Committee. (2019 - 2020).

Professional

Commission on Collegiate Nursing Education (CCNE) onsite/virtual accreditation evaluator, team leader. (2010 – 2021).
Board Member, Indiana Center for Nursing.
Council of Deans and Directors of Indiana.
American Nurses Association.
Indiana State Nurses Association.
Member, National League of Nursing.
Member, American Association of Colleges of Nursing (AACN).
Member, Organizational Leadership Network (OLN).
Member, Beta Rho Chapter at-large of Sigma Theta Tau International.
Committee member, Indiana Needs Steering Committee, Holistic Admissions. (2019 – 2021).
Member American School Health Association. (2018 – 2021).
Reviewer, American School Health Association Webinar abstract reviewer for 2020,
Reviewer, National League for Nursing abstract reviewer for 2020 Education Summit.

Simon, Kathleen A.

Department/program

Committee Member, Master's Curriculum Committee. (2018-present).
Subcommittee Member, Master's NP Advisory Subcommittee. (2018-present).
Subcommittee Secretary, Masters NP subcommittee. (2019-present).
Committee Member, Faculty Organization Committee.

Professional

FNP, Margaret Mary Health
American Nurses Association.
Indiana State Nurses Association.
Member, National League of Nursing.
Member, Sigma Theta Tau International.

Spengler, Polly S.

Department/program

Committee Member, Baccalaureate Curriculum Committee. (August 2018 - present).
Committee Member, Faculty Organization Committee. (August 2018 - present).

Professional

Member, National League of Nursing.

Thomas, Cynthia M.

Department/program

New Faculty Mentoring Meetings. (2019 – 2020).
Committee Member Baccalaureate Curriculum Committee. (2020).
Committee Chair, Tenure/Tenure-Line Salary Appeals Committee. (2020).
Committee Member, Master's Curriculum Committee. (2015 – 2020).
Committee Member, Master's Admission & Progression Committee. (2020).

College

Committee Chair, Tenure/Tenure-Line Salary Committee. (2018 – 2020).
Committee Chair, Tenure/Tenure-Line Salary Appeals Committee. (2019 – 2020).

University

Committee Member, Creative Arts Committee. (2019-2020).

Professional

Reviewer/referee, Sage Open Access Journal. (December 2013 - Present).
Reviewer/referee, The Journal of Christian Nursing. (2013 - Present).
Reviewer/referee, National League of Nursing SIRC/CE Courses. (September 2012 - Present).
Reviewer/referee, Journal of Nursing Education and Practice. (June 2012 - Present).
Reviewer/referee, Nurse Education Today. (June 2012 - Present).
Reviewer/referee, Journal of Nursing Regulation. (2011 - Present).
Reviewer/referee, The Journal of Clinical Simulation in Nursing. (2010 - Present).
President, Beta Rho Chapter at-larger of Sigma Theta Tau International. (March 2015 - Present).

Twibell, Kathryn R.

Department/program

Parliamentarian, Faculty Organization. (2011 - 2020).
Committee Member, Master's Curriculum Committee. (September 2010 - 2021).
Committee Member, Baccalaureate Curriculum Committee. (September 2019 - 2021).
Committee Member, Salary Tenure/Tenure-Line Committee. (2020 – 2021).
CCNE Accreditation Workgroups, Co-chair/Member, School of Nursing, Ball State University (2019 - 2020).

Professional

Continuing Education National Review Committee, Member, American Association of Critical Care Nurses. (2017 - 2020).
Reviewer/referee, *Critical Care Nurse*: American Association of Critical-care Nurses. (September 2016 - Present).
Reviewer/referee, American Journal of Critical Care: American Association of Critical-care Nurses. (2012 - Present).
Reviewer/referee, *Heart & Lung*. (2012 - present).
Administrative/Academic Mentor, Nursing Research Council/Nursing Evidence-based Practice Advisory Group, IU Health East Central Region. (January 2006 - present).
Administrative Mentor, Developing Leaders Program, IU Health Ball Memorial Hospital. (2019 - 2020).
Abstract Reviewer, Graduate Medical Education Research Symposium Indiana University Health, Ball Memorial Hospital. (January 2013 - present).
Coordinator, Nursing Section, Douglas A. Triplett MD Memorial Research Symposium, IU School of Medicine, IU Health Ball Memorial Hospital. (2020 - 2021).
Member/Academic-Clinical Liaison, IU Health Statewide Research Leadership Council. (2016 - 2021)
Academic Clinical Representative, IU Health Shared Leadership Council. (2016 - 2021).
Committee Member, Indiana University Health Annual Nursing Research Conference, Planning Committee, Member (2010 - present)
Abstract Reviewer, Indiana University Health Annual Nursing Research Conference. (2010 - present).

Public/community

Advisory Board Member, Celebrate Recovery, Middletown, IN. (January 2009 - December 2021).
Advisory Board Member, ARK Daycare, Middletown, IN. (January 2016 – June, 2020)

University

Committee Member, Admissions and Credits Committee. (September 2017 - Present).

Consulting

Dr. Kelly Powers, PhD, RN, University of North Carolina-Charlotte, School of Nursing., Charlotte, NC (October 1, 2017 - Present).
IU Health Arnett Hospital, Lafayette, IN, Unpaid. (June 1, 2018 - January 13, 2020).
Served as a consultant to Laura Moffatt, MS, RN, CNS, chairperson of the hospital's research council.
Indiana University Health Ball Memorial Hospital, Muncie, IN, Paid. (October 1, 2002 - Present).
Nurse Researcher – Mentor/Academic Liaison.

Van Hove, Sharon P.

Department/program

Committee Member, Baccalaureate A&P Committee. (2005 - 2020).
Committee Member, Baccalaureate Curriculum Committee. (2002 - 2020).
Committee Member, Faculty Organization Committee. (2002 - 2020).
Conducted School of Nursing tours twice a week. (August 2020 – Present).

University

Faculty Member, Disability Services. (August 2019 – May 2021).
Conducted Preview Days for School of Nursing. (August 2019 – May 2021).

Professional

Member, National League of Nursing.
Member, Beta Rho Chapter at-large of Sigma Theta Tau International.
Member, Association of Women’s Health, Obstetric, and Neonatal Nurses (AWHONN).

Waltz, Rachel E.

Department/program

Ad Hoc Committee Member, CCNE Accreditation. (January 2019 to May 2020).
Committee Secretary, Committee Chair, Non-Tenure-line Clinical Salary Committee.(August 2019 – May 2021).
Committee Member, Faculty Organization Committee. (August 2013 – Present).
Committee Secretary, Master’s Admission and Progression Committee. (August 2019 – Present).
Committee Secretary, Master’s Curriculum Committee. (August 2016 – Present).
Subcommittee Member, Nurse Practitioner Advisory Subcommittee. (August 2017 – Present).

Professional

Women’s Health Nurse Practitioner.
Member, National League of Nursing.

Wendel, Janelle

Department/program

Committee Member, Faculty Organization Committee. (2019 - 2020).

Yakos, Amy

Department/program

Committee Member, Faculty Organization Committee. (2019 - 2020).
Committee Member, Non-Tenure-Line Clinical Faculty Promotion. (August 2019 - May 2021).

Professional

Member, National League of Nursing.
Committee Chair, Tri Kappa Scholarship Committee.
Member, Safe Kids, Tri Kappa.
Chair, Muncie Children’s Museum Capital Campaign.
Member Board of Directors, Muncie Children’s Museum.
Volunteer, American Red Cross.
Member, Emergency Nurses Association.
Member, Association of Nursing Professional Development International.

APPENDIX C: STUDENTS IN CLINICAL SITES NATIONWIDE

Site	Agency / Company	Site City	Site State	Site Indiana County
400 North Medical Center	400 North Medical Center	Michigan City	IN	LaPorte
Action Health Center	Health and Hospital Corporation of Marion County	Indianapolis	IN	Marion
Activate Healthcare (South Bend)	Activate Healthcare, PC	South Bend	IN	St. Joseph
Advanced Healthcare Associates, LLP	Advanced Healthcare Associates, LLP	Indianapolis	IN	Marion
American Health Network - Charlestown Rd.	American Health Network of Indiana, LLC	New Albany	IN	Floyd
American Health Network - Greenfield	American Health Network of Indiana, LLC	Greenfield	IN	Hancock
American Health Network - Marion	American Health Network of Indiana, LLC	Marion	IN	Grant
American Health Network - Muncie	American Health Network of Indiana, LLC	Muncie	IN	Delaware
American Health Network of Indiana, LLC	American Health Network of Indiana, LLC	Indianapolis	IN	Marion
Anderson Community Schools Employee Health Center	Community Health Network	Anderson	IN	Madison
Anderson University School of Nursing	Anderson University School of Nursing	Anderson	IN	Madison
Anne Arundel Community College	Anne Arundel Community College	Arnold	MD	N/A
Ascension Anderson Children's Clinic	St Vincent Health, Inc.	Anderson	IN	Madison
Ascension Medical Group St. Vincent - Northeast	St Vincent Health, Inc.	Pendleton	IN	Madison
Ball State University	Ball State University	Muncie	IN	Delaware
Beacon Health System, Inc.	Beacon Health System, Inc.	South Bend	IN	St. Joseph
Bremen Family Medicine	Saint Joseph Regional Medical Center, Inc.	Bremen	IN	Marshall

Site	Agency / Company	Site City	Site State	Site Indiana County
Centerstone Health Services, Inc.	Centerstone Health Services, Inc.	Bloomington	IN	Monroe
Chhabra Medical Corporation	Chhabra Medical Corporation	Portage	IN	Porter
Chhabra Medical Corporation , Merrillville Health Center	Chhabra Medical Corporation	Merrillville	IN	Lake
Columbus Regional Hospital	Columbus Regional Hospital	Columbus	IN	Tipton
Community Health Network - Corporate	Community Health Network	Indianapolis	IN	Marion
Community Physician Network Pediatric Care KOK	Community Health Network	Kokomo	IN	Howard
Community Physician Network Women's Midwifery Clinic North	Community Health Network	Indianapolis	IN	Marion
Community Physician Network, Family Medicine and Pediatric Care (56th St.)	Community Health Network	Indianapolis	IN	Marion
Community Physician Network, Family Medicine Care - Castleton	Community Health Network	Indianapolis	IN	Marion
Community Physician Network, Family Medicine Care (County Line)	Community Health Network	Greenwood	IN	Johnson
Community Physician Network, Family Medicine Care (Fishers)	Community Health Network	Fishers	IN	Hamilton
Community Physician Network, Family Medicine Care (Lapel)	Community Health Network	Lapel	IN	Madison
Community Physician Network, Family Medicine Care (Medical Arts)	Community Health Network	Anderson	IN	Madison
Community Physician Network, Internal Medicine Care (Clearvista)	Community Health Network	Indianapolis	IN	Marion
Community Physician Network, OB/GYN Care (Clearvista)	Community Health Network	Indianapolis	IN	Marion
Community Physician Network, OB/GYN Care (Ritter)	Community Health Network	Indianapolis	IN	Marion
Community Physicians Network , Family Medicine Care (Guion)	Community Health Network	Indianapolis	IN	Marion
Community Physicians of Indiana (Marion County)	Community Health Network	Indianapolis	IN	Marion

Site	Agency / Company	Site City	Site State	Site Indiana County
Compass Health Network - Warrenton	Compass Health Network	Warrenton	MO	N/A
Cornerstone Family Physicians - Theresa M. Krueger, MD	Cornerstone Family Physicians - Theresa M. Krueger, MD	Indianapolis	IN	Marion
Courtney Clinic	Mosaic Medical	Bend	OR	N/A
Crawford, Rick, MD	Deaconess Hospital, Inc.	Evansville	IN	Vanderburgh
Cypress Family Medical Center, PA	Cypress Family Medical Center, PA	Fort Myers	FL	N/A
Dekalb Health Medical Group Pediatrics	Dekalb Health Medical Group Pediatrics	Auburn	IN	DeKalb
Erika Beard-Irvine, MD, LLC	Erika Beard-Irvine, MD, LLC	Bend	OR	N/A
Eskenazi Health	Eskenazi Health	Indianapolis	IN	Marion
Eskenazi Health Center West 38th Street	Eskenazi Health	Indianapolis	IN	Marion
Eskenazi Health Center Westside	Eskenazi Health	Indianapolis	IN	Marion
Family and Occupational Medicine of Lynn/Ridgeville, LLC	Family and Occupational Medicine of Lynn/Ridgeville, LLC	Lynn	IN	Randolph
Family Medicine and Pediatric Care - Geist	Community Health Network	Indianapolis	IN	Marion
Ferguson Medical Group	Saint Francis Medical Center	East Prairie	MT	N/A
Franciscan Health Indianapolis	Franciscan Alliance, Inc.	Indianapolis	IN	Marion
Franciscan Physician Network Greenwood Parke Family Medicine	Franciscan Alliance, Inc.	Greenwood	IN	Johnson
Franciscan Physician Network Heartland Internal Medicine	Franciscan Alliance, Inc.	Camby	IN	Owen
Franklin Family Practice	Premier Health Partners	Franklin	OH	N/A
Fully Armored Family Health & Fitness	Fully Armored Family Health & Fitness	Carmel	IN	Wayne

Site	Agency / Company	Site City	Site State	Site Indiana County
Good Samaritan Hospital	Good Samaritan Hospital	Vincennes	IN	Knox
Goshen Physicians Family Medicine – Shipshewana	Goshen Physicians	Shipshewana	IN	LaGrange
Goshen Physicians OB/GYN	Goshen Physicians	Goshen	IN	Elkhart
Greene County General Hospital	Greene County General Hospital	Linton	IN	Greene
Greenwood Pediatrics	Franciscan Alliance, Inc.	Indianapolis	IN	Marion
Growing Kids Pediatrics, LLC	Growing Kids Pediatrics, LLC	New Albany	IN	Floyd
Gulf Women's Center	Gulf Women's Center	Englewood	FL	N/A
Hancock Family Medicine (East Boyd)	Hancock Physician Network	Greenfield	IN	Hancock
Hancock Family Medicine (West McKenzie)	Hancock Physician Network	Greenfield	IN	Hancock
Hancock Physician Network	Hancock Physician Network	Greenfield	IN	Hancock
Hancock Regional Hospital	Hancock Regional Hospital	Greenfield	IN	Johnson
HealthLink	Henry County Hospital	New Castle	IN	Henry
Hendricks Regional Health Immediate Care Center Avon	Hendricks Regional Health	Avon	IN	Hendricks
High Desert Women's Care	High Desert Women's Care	Redmond	OR	N/A
Highpoint Health	Highpoint Health	Lawrenceburg	IN	Dearborn
In His Hands Family Medicine	In His Hands Family Medicine	Mooresville	IN	Morgan
Indiana Health Center - Kokomo	Indiana Health Centers, Inc.	Kokomo	IN	Howard
Indiana Health Center - Owen County	Indiana Health Centers, Inc.	Spencer	IN	Owen

Site	Agency / Company	Site City	Site State	Site Indiana County
Indiana Internal Medicine Consultants LLC	Indiana Internal Medicine Consultants LLC	Greenwood	IN	Johnson
Indiana OB/GYN	Indiana OB/GYN	Indianapolis	IN	Marion
Indiana University (Teaching Practicum)	Indiana University (Teaching Practicum)	Bloomington	IN	Monroe
Indiana University Health Arnett Physicians Family Medicine (Frankfort)	Indiana University Health	Frankfort	IN	Clinton
Indiana University Health Arnett Physicians Family Medicine (Monticello)	Indiana University Health	Monticello	IN	White
Indiana University Health Arnett Physicians Internal Medicine	Indiana University Health	Lafayette	IN	Tippecanoe
Indiana University Health Ball Memorial Outpatient Center	Indiana University Health	Yorktown	IN	Delaware
Indiana University Health Ball Memorial Physicians Primary Care	Indiana University Health	Hartford City	IN	Blackford
Indiana University Health Bloomington, Inc.	Indiana University Health	Bloomington	IN	Monroe
Indiana University Health Physicians	Indiana University Health	Indianapolis	IN	Marion
Indiana University Health Physicians Family Medicine - Meridian	Indiana University Health	Indianapolis	IN	Marion
Indiana University Health Physicians Internal Medicine & Pediatrics - Saxony	Indiana University Health	Fishers	IN	Hamilton
Indiana University Health Physicians Orthopedics & Sports Medicine	Indiana University Health	Fishers	IN	Hamilton
Indiana University Health Physicians Primary Care – Methodist	Indiana University Health	Indianapolis	IN	Marion
Indiana University Health Physicians Primary Care - Tipton	Indiana University Health	Tipton	IN	Tipton
Indiana University Health Physicians Women's Health – Parkdale	Indiana University Health	Indianapolis	IN	Marion
Indy Family Medicine	Indy Family Medicine	Carmel	IN	Allen

Site	Agency / Company	Site City	Site State	Site Indiana County
Ingram, Richard, MD, Inc.	Ingram, Richard, MD, Inc.	Montpelier	IN	Blackford
Ivy Tech Community College - Lawrenceburg	Ivy Tech Community College - Lawrenceburg	Lawrenceburg	IN	Dearborn
Ivy Tech Community College Lafayette	Ivy Tech Community College Lafayette	Lafayette	IN	Tippecanoe
Ivy Tech Community College-Central Indiana	Ivy Tech Community College-Central Indiana	Indianapolis	IN	Marion
Johnson Memorial Health	Johnson Memorial Health	Whiteland	IN	Johnson
Johnson Memorial Health Primary Care Center (Franklin)	Johnson Memorial Health	Franklin	IN	Johnson
Johnson Memorial Hospital	Johnson Memorial Health	Franklin	IN	Johnson
Johnson Memorial Hospital Family Medicine	Johnson Memorial Health	Franklin	IN	Johnson
Knightstown Health Care Center	Hancock Physician Network	Knightstown	IN	Henry
Kollipara, Anuradha, MD	Kollipara, Anuradha, MD	Fort Wayne	IN	Allen
Lake Station NorthShore Center	NorthShore Health Centers	Lake Station	IN	Lake
Lizton Family Medicine	Hendricks Regional Health	Lizton	IN	Hendricks
Logansport Memorial Physician Network Family Medicine	Memorial Hospital of Logansport	Logansport	IN	Cass
Logansport Memorial Physician Network Women's Health Center	Memorial Hospital of Logansport	Logansport	IN	Cass
Lutheran Medical Group - Family Medicine (Jefferson)	Lutheran Medical Group, LLC	Fort Wayne	IN	Allen
Lutheran Medical Group, LLC	Lutheran Medical Group, LLC	Fort Wayne	IN	Allen
Major Family and Internal Medicine	Major Health Partners	Shelbyville	IN	Shelby
Major Health Partners	Major Health Partners	Shelbyville	IN	Shelby

Site	Agency / Company	Site City	Site State	Site Indiana County
Margaret Mary Health	Margaret Mary Health	Batesville	IN	Ripley
Margaret Mary Physician Center	Margaret Mary Health	Batesville	IN	Ripley
Marion General Hospital	Marion General Hospital	Marion	IN	Grant
Memorial Hospital of Logansport	Memorial Hospital of Logansport	Logansport	IN	Cass
Mercer Health Medical Group at Coldwater	Mercer Health	Coldwater	OH	N/A
Meridian Health Services	Meridian Health Services	Muncie	IN	Delaware
Millennium Physician Group (Thomasson)	Millennium Physician Group	Naples	FL	N/A
Missouri Delta Women's Care Center	Missouri Delta Medical Center	Sikeston	MO	N/A
Northeast Internal Medicine Association (LaGrange)	Northeast Internal Medicine Association	LaGrange	IN	LaGrange
Oak Street Health	Oak Street Health	Chicago	IL	N/A
Obstetrics & Gynecology of Indiana (North)	Obstetrics & Gynecology of Indiana	Indianapolis	IN	Marion
Oliver Family Healthcare, PC	Oliver Family Healthcare, PC	Indianapolis	IN	Marion
Open Door Health Services	Open Door Health Services	Muncie	IN	Delaware
Open Door Health Services Adult Health Care	Open Door Health Services	Anderson	IN	Madison
Open Door Health Services Family Planning	Open Door Health Services	Muncie	IN	Delaware
Parkview Physicians Group - Family Medicine & Internal Medicine (New Vision)	Parkview Health System	Fort Wayne	IN	Allen
Parkview Physicians Group - Family Medicine (Auburn)	Parkview Health System	Auburn	IN	DeKalb
Parkview Physicians Group - Family Medicine (Huntington)	Parkview Health System	Huntington	IN	Huntington

Site	Agency / Company	Site City	Site State	Site Indiana County
Parkview Physicians Group - Family Medicine (SR 205)	Parkview Health System	Columbia City	IN	White
Parkview Physicians Group - Family Medicine (Temple)	Parkview Health System	Fort Wayne	IN	Allen
Parkview Physicians Group - OB/GYN (Carnegie)	Parkview Health System	Fort Wayne	IN	Allen
Parkview Physicians Group - OB/GYN (Parkview Plaza)	Parkview Health System	Fort Wayne	IN	Allen
Parkview Physicians Group (Huntertown)	Parkview Health System	Huntertown	IN	Allen
Parkview Physicians Group- Family Medicine (Warsaw)	Parkview Health System	Warsaw	IN	Kosciusko
Parkview Regional Medical Center	Parkview Health System	Fort Wayne	IN	Allen
Pavilion Pediatrics, LLC	Pavilion Pediatrics, LLC	Muncie	IN	Delaware
Pediatric Advocates	Lutheran Medical Group, LLC	Peru	IN	Miami
Plymouth Family & Internal Medicine	Saint Joseph Regional Medical Center, Inc.	Plymouth	IN	Marshall
Post Road Health Center	Jane Pauley Community Health Center	Indianapolis	IN	Marion
Provident Family Healthcare	Lutheran Medical Group, LLC	Warsaw	IN	Kosciusko
Purdue University Northwest	Purdue University Northwest	Hammond	IN	Lake
Pynckel, Gary L., DO, PA	Pynckel, Gary L., DO, PA	Fort Myers	FL	N/A
Quality Community Health Care, Inc.	Quality Community Health Care, Inc.	Philadelphia	PA	N/A
Reid Health Primary & Specialty Care – Hagerstown	Reid Hospital and Health Care Services	Hagerstown	IN	Wayne
Reid Hospital and Health Care Services	Reid Hospital and Health Care Services	Richmond	IN	Wayne
Reid OB/GYN	Reid Hospital and Health Care Services	Richmond	IN	Wayne

Site	Agency / Company	Site City	Site State	Site Indiana County
Riverview Health	Riverview Health	Noblesville	IN	Hamilton
Rogue Functional Wellness, LLC	Rogue Functional Wellness, LLC	Medford	OR	N/A
Rounding Providers	Rounding Providers	Fort Wayne	IN	Allen
Saint Joseph Health Center	Saint Joseph Regional Medical Center, Inc.	Plymouth	IN	Marshall
Sareen, Rajan, MD	Sareen, Rajan, MD	Fort Meyers	FL	N/A
Schneck OB/GYN	Schneck Medical Center	Seymour	IN	Jackson
Sharpsville Medical Office	Sharpsville Medical Office	Sharpsville	IN	Tipton
Southern Indiana Physicians (Ellettsville)	Indiana University Health	Bloomington	IN	Monroe
Southern Indiana Physicians Family & Internal Medicine (Gosport)	Indiana University Health	Gosport	IN	Owen
Southern Indiana Physicians Family and Internal Medicine (Bedford)	Indiana University Health	Bedford	IN	Lawrence
Southern Indiana Physicians Riley Physicians Pediatrics	Indiana University Health	Bloomington	IN	Monroe
St Joseph Hospital	St Joseph Hospital	Fort Wayne	IN	Allen
St Joseph's Hospital and Health Center	St Joseph's Hospital and Health Center	Dickinson	ND	N/A
St Martin's Healthcare Inc.	St Martin's Healthcare Inc.	Garrett	IN	DeKalb
St Vincent Hospital and Health Care Center	St Vincent Health, Inc.	Indianapolis	IN	Marion
St Vincent Medical Group - Medical Clinic (Kokomo)	St Vincent Health, Inc.	Kokomo	IN	Howard
St Vincent Medical Group - Primary Care (Frankfort)	St Vincent Health, Inc.	Frankfort	IN	Clinton
St Vincent Medical Group - Winchester Immediate Care	St Vincent Health, Inc.	Winchester	IN	Randolph

Site	Agency / Company	Site City	Site State	Site Indiana County
St Vincent Medical Group (Brownsburg)	St Vincent Health, Inc.	Brownsburg	IN	Hendricks
St Vincent Medical Group (Carmel)	St Vincent Health, Inc.	Carmel	IN	Lake
St. Vincent Center Primary Care	St Vincent Health, Inc.	Indianapolis	IN	Marion
St. Vincent Medical Group - Middletown Primary Care	St Vincent Health, Inc.	Middletown	IN	Henry
Thomas, Clarence, MD	Thomas, Clarence, MD	Indianapolis	IN	Marion
Union Hospital, Inc. and Union Associated Physicians, LLC	Union Hospital, Inc. and Union Associated Physicians, LLC	Terre Haute	IN	Vigo
Universal Healthclinics - Hoffman Estates	Universal Healthclinics, SC	Hoffman Estates	IL	N/A
University of Saint Francis (Ft. Wayne)	University of Saint Francis (Ft. Wayne)	Fort Wayne	IN	Allen
Valley Professionals Community Health Center	Valley Professionals Community Health Center	Cayuga	IN	Henry
Valley Professionals Community Health Center (Crawfordsville)	Valley Professionals Community Health Center	Crawfordsville	IN	LaGrange
Valley Professionals Community Health Center (Terre Haute)	Valley Professionals Community Health Center	Terre Haute	IN	Vigo
Wellness for Life	Wellness for Life	Terre Haute	IN	Vigo
Westfield Medical	Riverview Health	Westfield	IN	Hamilton
Winfield Family Medicine	Winfield Family Medicine	Crown Point	IN	Johnson
Witham Family Medicine	Witham Health Services	Lebanon	IN	Boone
Witham Health Services	Witham Health Services	Lebanon	IN	Boone
Women's Health Advantage - Parkview North	Women's Health Advantage	Fort Wayne	IN	Allen
Woodway Internal Medicine	Woodway Internal Medicine	Muncie	IN	Delaware
Wright State University - Miami Valley College of Nursing & Health	Wright State University - Miami Valley College of Nursing & Health	Dayton	OH	N/A

APPENDIX D: SCHOLARSHIP SUMMARY DATA

PUBLICATIONS

** Student-Lead Publication

Refereed Journal Article (Published): 13

- Abebe, S., Goldsby, E. A., & Renbarger, K. M. (2020). A theory-based approach utilizing telehealth for pregnant women with opioid use disorder. *Journal of Psychosocial Nursing and Mental Health Services*, 58(12), 13-20.
- Goldsby, E. A., Goldsby, M. G., & Neck, C. P. (2020). Self-leadership strategies for nurse managers. *Nursing Management*, 51(3), 34-40. <http://dx.doi.org/10.1097/01.numa.0000654848.10513.11>
- Goldsby, E. A., Goldsby, M. G., Neck, C. P., & Neck, C. B. (2020). Self-leadership in a hospital setting: A framework for addressing the demands of nurse managers. *Journal of Leadership and Management*, 16, 57-65.
- Goldsby, E. A., Goldsby, M. G., Neck, C. B., & Neck, C. P. (2020). Under Pressure: Time management, self-leadership, and the nurse manager. *Administrative Sciences*, 10(3), 38. <http://dx.doi.org/10.3390/admsci10030038>
- Kandiah, J., McIntosh, C. E., & Boucher, N. R. (2020). Nutritional wellness in preschoolers with Autism Spectrum Disorder. *Perspectives on Early Childhood Psychology & Education*, 5(1), 73-86.
- McIntosh, C. E., & Brelage, P. (2020). Addressing the healthcare needs of behavioral conditions at camp. *Compass Point*, 29(4), 5-9. https://campnurse.org/wp-content/uploads/2020/01/Winter_2019_Vol.29.-no.4.pdf
- McIntosh, C. E., Brelage, P. K., Phelps, B., & Wendel, J. (2020). Nursing students educate children with ASD through digital posters. *CompassPoint*, 30(4), 14-16.
- McIntosh, C., Brelage, P., Pokorny, R., Duckham, J., & Boucher, N. (2020). School nurses' roles in preparing special needs students for active school shootings. *NASN School Nurse*, 35(3), 158-164. <https://doi.org/10.1177/1942602X19885363>
- McIntosh, C., Hernandez Finch, M. E., Thomas, C. M., Finch, W. H., Hulse, A., Brelage, P., & McIntosh, D. E. (2020). Evaluating self-efficacy and personality differences of nursing students in ASD clinical simulation. *Journal of Nursing Education and Practice*, 10(9), 12-20.
- McIntosh, C., & Thomas, C. M. (2020). Improving safety of Autism Spectrum Disorder patients through simulation. *Clinical Simulation in Nursing*, 45, 1-5.
- Renbarger, K. M., Moorman, M., Latham-Mintus, K., Shieh, C., & Draucker, C. (2020). Factors associated with a trusting relationship between pregnant and postpartum women with substance use disorders and maternity nurses. *International Journal of Childbirth*, 10(4), 180-197.
- Renbarger, K. M., Shieh, C., Moorman, M., & Latham-Mintus, K. (2020). The health care encounters of pregnant and postpartum women with substance use disorders. *Western Journal of Nursing Research*, 42(8), 612-628. doi:10.1177/0193945919893372
- Twibell, K. R., Siela, D. L., Delaney, L., Avila, P., Spradlin, A., & Coers, G. (2020). Perspectives of inpatients with cancer on engagement in fall pPrevention. *Oncology Nursing Forum*, 47(4), 457-468.

Refereed Journal Article (In-Press): 1

Renbarger, K. M., & Burke Draucker, C. Nurses' approaches to pain management for women with opioid use disorder in the perinatal period. *Journal of Obstetric, Gynecologic, and Neonatal Nurses*.

Refereed Journal Article (Submitted): 6

Abebe, S., Siktberg, L. L., Mucherah, W. M., Kandiah, J., & Hall, G. An evaluation of an train-the-trainer workshop on Sickle Cell Anemia education and awareness prior to and during the COVID-19 Pandemic. *Ethnicity and Health*.

** Fluhler, H., Kyle, B., Twibell, K. R., Rook, G., Stanley, V., Bales, M., Hargreaves, K., & Hemphill-Martin, M. Physiological safety of a movement-and-music intervention for hospitalized infants with neonatal abstinence syndrome. *Advances in Neonatal Care*.

Mucherah, W. M., Abebe, S., Kandiah, J., & Siktberg, L. L. An educational intervention increases adolescents awareness and knowledge of Sickle Cell Anemia. *Ethnicity and Health*.

Renbarger, K. M., Phelps, B. E., Brand, J., & Broadstreet, A. Nurses' descriptions of health care exchanges when caring for women with perinatal substance use disorders and their infants. *Nursing for Women's Health*.

Renbarger, K. M., & Place, J. M. S. The influence of four constructs of social support on pregnancy experiences in group prenatal care. *Women's Health Reports*.

Thomas, C. M., McIntosh, C., & Bantz, D. L. (2020) Strategies for innovative teaching and learning to increase student and faculty engagement for online learning. *Teaching and Learning in Nursing*.

Journal Article (Work-in-Progress): 1

Slater, G. Y., Renbarger, K. M., Trainor, K. E., & Sullivan, C. Preliminary efficacy of residential opioid treatment program for pregnant and postpartum women. *Substance Abuse Research and Treatment*.

PRESENTATIONS

** Student-Lead Presentation

International Conference Presentations: 3

Goldsby, E. A., & Goldsby, M. G., BCERC, "The impact of self-management practices on entrepreneurial stress and satisfaction," Babson College, MA. (June 4, 2020).

Goldsby, M. G., Kuratko, D. F., Bishop, J. W., & Goldsby, E. A., Babson College Entrepreneurship Research Conference, "The self-management practices of entrepreneurs," Babson College, Knoxville, TN. (June 4, 2020).

Thomas, C. M., & McIntosh, C., International Nursing Association for Clinical Simulation & Learning, "Addressing unique safety concerns of patients with Autism Spectrum Disorder through simulation," International Nursing Association for Clinical Simulation & Learning, Raleigh, North Carolina. (June 24, 2020).

National Conference Presentations: 9

Brand, J. M. "Knowledge & understanding of HPV vaccine acceptance in 3 selected minority populations in the Midwest," Centers for Disease Control and Prevention: 2020 National STD Conference: Virtual. (September 14, 2020).

Goldsby, E. A., & Abebe, S., 5th Edition of the World Nursing Conference, "Utilizing Imogene King's Theory of Goal Attainment with Opioid Recovery," Nursing World Conference, Orlando, Florida. (October 19, 2020).

McIntosh, C., Kandiah, J., Hernandez Finch, M. E., & Boucher, N., Food and Nutrition Conference EXPO, "Dietetic professionals' role in nutrition care of a simulated pediatric patient with Autism Spectrum Disorder." Virtual. (October 20, 2020).

Slater, G. Y., Thaller, J., Liebing, A., Catherine S., Place, J. M. S., & Renbarger, K. M., Council for Social Work Education Annual Conference, "Fresh start residential opioid treatment program for pregnant and parenting women," CSWE, Denver, Colorado. (November 12, 2020).

Twibell, K. R., Delaney, L., Siela, D. L., Coers, G., Davis, C., Kring, K., & Drown, C., Academy of Medical-Surgical Nurses Annual Conference, "Effect of a tailored video intervention on inpatients' fall-related perceptions," Academy of Medical-Surgical Nurses, Las Vegas, NV - virtual. (October 24, 2020).

Twibell, K. R., Fluhler, H., Kyle, B., Rook, G., Stanley, V., Bales, M., Hargreaves, K., & Hemphill-Martin, M., National Association of Neonatal Nurses Annual conference, "Physiological Safety of Movement and Music Therapies as Non-Pharmacological Interventions in Opioid-Exposed Newborns," National Association of Neonatal Nurses, New Orleans - virtual. (October 10, 2020).

Twibell, K. R., & Henry, S., American Association of Critical Care Nurses National Teaching Institute 2020, "Beyond the bedrails: Realistic strategies for patient and family engagement during critical illness," American Association of Critical Care Nurses, Indianapolis. (May 2020).

Twibell, K. R., Staton, K., & Middlesworth, C., American Association of Critical Care Nurses National Teaching Institute, "From unsure to unstoppable: Empowering nurses to confidently evaluate research for practice," American Association of Critical Care Nurses, Indianapolis, IN. (May 5, 2020).

Twibell, K. R., & Cook, D., American Association of Critical Care Nurses National Teaching Institute, "Designing my career path: Options, outlooks and oOpportunities." American Association of Critical Care Nurses, Indianapolis, IN. (May 5, 2020).

Regional Conference Presentations: 2

Delaney, L., Coers, G., Twibell, K. R., Siela, D. L., Kring, K., & Drown, C., IU Health South Central Regional Second Annual Research Conference, "Effect of tailored video-based education for fall prevention on perceptions of hospitalized adults.," IU Health Bloomington, Bloomington, IN. (April 9, 2020).

Renbarger, K. M., Advancing Nursing Research with Diverse Populations, "The health care encounters of pregnant and postpartum women with substance use disorders," Midwest Nursing Research Society, Schaumburg, Illinois. (April 3, 2020).

State Conference Presentations: 4

** Fluhler, H., Kyle, B., Twibell, K. R., Rook, G. G., Stanley, V., Bales, M., Hargreaves, K., & Hemphill-Miller, M., Indiana Center For Nursing Annual Nursing Summit, "Physiological safety of movement and music as non-pharmacological interventions in opioid-exposed newborns," Indiana Center For Nursing, Virtual. (November 2, 2020).

Renbarger, K. M., Place, J. M. S., & Broadstreet, A., Labor of Love Infant Mortality Summit, "The role of social support through shared pregnancy experiences," Indiana State Department of Health, Virtual. (December 10, 2020).

Renbarger, K. M., Labor of Love Infant Mortality Summit, "Building trust between pregnant and postpartum women with substance use disorders and their maternity nurses," Indiana State Department of Health, Indianapolis, IN. (December 10, 2020).

Twibell, K. R., Delaney, L., Coers, G., Siela, D. L., Kring, K., & Drown, C., Indiana University Health Professional Presentation Series, "Effect of tailored video-based education for fall prevention on perceptions of hospitalized adults," IU Health, Virtual. (July 2020).

Local Presentations: 5

Fry, S., Stanley, V., Holdcraft, J., Morris, J., Fluhler, D., Twibell, K. R., & Kyle, B., Douglas A. Triplett MD Annual Research Symposium, "Improving outcomes in the neonatal intensive care: an interprofessional model of care delivery, IU Health Ball Memorial Hospital, Muncie, IN. (April 17, 2020).

Renbarger, Kalyn M., New Faculty Academy, Ball State University. (October 28, 2020).

Twibell, K. R., Delaney, L., Siela, D. L., Coers, G., Kring, K., Drown, C., Douglas A. Triplett MD Annual Research Symposium, "Effect of a tailored video-based education for fall prevention on perceptions of hospitalized adults," IU Health Ball Memorial Hospital, Medical Education Department, Muncie, IN. (April 17, 2020).

Twibell, K. R., & Coers, G., Evidence-based Practice Regional Seminar 2020, "Skill strengthening: Getting strong in evidence-based practice," IU Health East Central Region, Hartford City, IN. (November 2, 2020).

Twibell, K. R., & Coers, G., Evidence-based Practice Regional Seminar 2020, "Skill strengthening: Getting strong in evidence-based practice," IU Health East Central Region, Portland, IN. (September 30, 2020).

GRANTS

Funded

Proposal: 21-0269

Grant Account Number: 240211

Brand, Juanita (Principal), "An Examination of Midwestern Community-Based and Faith-Based Organizations' perceptions of Covid-19's Impact" August 21, 2020 to June 20, 2021. Proposed Funding Amount \$44,643. Date Funded: 12.16.2020

Proposal: 21-0002

Grant Account Number: 257558

Renbarger, Kalyn M. (Principal), Place, Jean Marie Sims (Co-Principal), Burkhart, Lina Lynise (Co-Principal), "A Community-University Collaboration Aimed to Improve Maternal Mental Health in Delaware County", External, October 1, 2020 to September 30, 2021 Proposed Funding Amount: \$5000. Date Submitted: July 2020, Date Funded: September 2020 A21-0085-001 (G0001623A).

Proposal 17-0649

Grant Account number 200457

Slater, Greta (PI), Thaller, J. (Co-PI), & Renbarger, K. (Co-Principal). "SAMHSA Services Grant Program for Residential Treatment for Pregnant and Postpartum Women," External, 9/30/2019-9/29/2020. Proposed funding amount \$47,500. Date Funded 3/31/2020 A18-0090-003, (G0001181A).

Proposal: 18-0476

Grant Account number: 240158

Slater, Greta (PI), Trainor, K., (Co-Principal), & Renbarger, K. (Co-Principal). "VOA Fresh Start Pilot Project Education," External, 3/31/2020-6/30/2021. Proposed funding amount \$60,000. Date submitted 2/16/2018. Date Funded 3/03/2020 A18-0297-003 (G0001183A)

Not Funded

Proposal: 20-0690

Renbarger, Kalyn M., Place, Jean Marie Sims, Placek, Caitlyn, Kandiah, Jayanthi, "The Current, Lived Experiences of Postpartum Women with Depressive and/or Anxiety Symptoms During the COVID-19 Pandemic", External Proposed Funding Amount: \$5000. Date Submitted: April 2020

Proposal: 21-0238

Twibell, Kathryn Renee, Siela, Debra L. (Co-Principal), Delaney, Lori (Co-Principal), "Reducing Falls Among High-risk Inpatients: A Qualitative Study of Clinical Nurses' Perceptions about Care Priorities and Care Left Undone", External, July 1, 2021 to June 30, 2022 Proposed Funding Amount: \$4445. Date Submitted: November 2020

Under Review

Proposal: 20-0672

Dieringer, Shannon, McIntosh, Constance, Su, Shu, "Saturday Autism Program", External Proposed Funding Amount: \$250,000. Date Submitted: April 2020

SPA Proposal #	Status	PI	PI Dept	Proposal Title	Agency	Agency Type	Project Type	Interdisciplinary Grant	Co PI(s)	Student Involvement	Requested Funds	Proposal IDC Funds	Academic YR Salary Buy Out Funds	Summer Salary Funds	GA Salary Funds	Additional Information	Funded Fiscal YR	Funded Date	Grant (G) Number	Multi Year Grant	Award Number	Funding	Fund Code	
21-0002	Funded	Renbarger, Kalyn	SON	A Community-University Collaboration Aimed to Improve Maternal Mental Health in Delaware County	Indiana Clinical and Translational Sciences Institute	Non-profit	Institutional Support	YES	Lina Burkhardt (CPSY), Jean Marie Place (Nutrition & Health Science)	NO	\$5,000	\$0	\$0	\$0	\$1,000	GA funding is in addition to stipend	2021	11/18/2020	G0001623A	NO	A21-0085-001	\$4,000	257558	
21-0269	Funded	Brand, Juanita	SON	An Examination of Midwestern Community-Based and Faith-Based Organizations and Members' perceptions of Covid-19's Impact	Indiana Minority Health Coalition	Non-profit	Research	NO		NO	\$44,643	\$7,441	\$21,888	\$6,567	\$0	Fall 2020 - \$10,944, Spring 2021 \$10,944 Summer 2021 \$6,567	2021	12/16/2020	G0001688A	NO	A21-0261-001	\$44,643	240211	
18-0476	Funded	Slater, Greta	Social Work	VOA Freshstart Pilot Project Evaluation	Volunteers of America of Indiana	State Government	Research	YES	Jonel Thaller (Social Work), Jean Marie Place (Nutrition & Health Science), Kalyn Renbarger (NURS), Kristin Trainor	NO	\$59,779	\$19,659	\$0	\$30,952	\$0	this is year 3 of funding Renbarger and Trainor added; Thaller and Place removed year 3 effective July 1, 2019 per email from Kelly P.	2020	03/03/2020	G0001183A	YES	A18-0297-003	\$60,000	240158	
17-0649	Funded	Slater, Greta	Social Work	SAMHSA Services Grant Program for Residential Treatment for Pregnant and Postpartum Women	Volunteers of America of Indiana	Federal Government	Research	YES	Jonel Thaller (Social Work), Kalyn Renbarger (NURS)	NO	\$237,500	\$50,494	\$98,402	\$24,789	\$19,406	Summer salary for Slater is \$24,789, AY for Slater \$12,000. AY salary for Thaller is \$98,402. GA salary is hourly wage money 5-yr grant - this is page 2 FY20 (accounts for FY19 and FY20 yrs 2 and yr 3); credits made 9/1/2019 (A18-0090-002) and 9/31/2020 (A18-0090-003) Renbarger added	2020	03/31/2020	G0001181A	YES	A18-0090-003	\$47,500	200451	
20-0690	Not Funded	Renbarger, Kalyn	SON	The Current, Lived Experiences of Postpartum Women with Depressive and/or Anxiety Symptoms During the COVID-19 Pandemic	Postpartum Support International	Non-profit	Research	YES	Jean Marie Place (Nutrition & Health Science), Jayanthi Kandiah (Nutrition & Health Science), Caitlyn Diane Placek	NO	\$4,995	\$0	\$0	\$0	\$0									
21-0238	Not Funded	Twibell, Kathryn	SON	Reducing Falls Among High-risk Inpatients: A Qualitative Study of Clinical Nurses' Perceptions about Care Priorities and Care Left	Sigma Theta Tau International	Professional Organization	Research	NO	Debra Siela (NURS)	NO	\$4,445	\$0	\$0	\$0	\$0									
20-0672	Under Review	Dieringer, Shannon	Other	Saturday Autism Program (SAP)	BSU Foundation-via Avis Foundation	Foundation	Research	YES	Constance McIntosh (NURS), Shu Su (Nutrition & Health Science)	NO	\$250,000	\$0	\$15,000	\$5,243	\$7,206	McIntosh Summer Salary \$5,243 NHS Faculty TBD-20/21-\$10,000 SON Faculty TBD- Fall 20 \$7,500, Spring 21-\$7,500								

\$606,362

\$156,143

School of Nursing
January 1 – December 31, 2020
Activities Related to Inclusive Excellence

Recruitment

The School of Nursing has collaborated with University Human Resource Services to increase the number of qualified diverse tenure-line and non-tenure-line faculty candidates.

Culture and Climate of Inclusion

The School of Nursing has established an Inclusive Excellence Committee.

Curriculum – Baccalaureate

Expose students to individuals with diverse life experiences, perspectives, and backgrounds.

Diversity in simulation: In general, in simulations across the curriculum, the baccalaureate program utilize scenarios with patients who have diverse backgrounds. The baccalaureate program utilize simulators with a variety of skin tones in order to further reflect diversity in the scenarios.

- NUR 330-Adult Health 1: In the COPD/ Heart Failure Simulation, the male patient is overweight, a smoker, with a wife that has Alzheimer's disease. The husband and wife are from a low-socioeconomic status and they are sharing medications.
- NUR 350 Psychiatric Mental Health Nursing: Virtual psychiatric clients for the first simulation are from the low-income, mental health population.
- NUR 340 Adult Health 2:- Postoperative
Simulation patient is a Jehovah's Witness and refuses blood products.
- NUR 370 Pediatrics: Postop Complications Simulation is on a 5-year-old Hispanic male with mother at bedside speaking very little English.
- NUR 402 Adult Health 3: The GI Acute Bleeding Simulation features a patient who has many social complexities, including smoking for 50 years, alcoholism, and despondency related to being a recent widow.
- NUR 404-Community Health: A group Population Focused Project targets a select community aggregate group addressing the social determinants of health.
- NUR 406 Childbearing Family: Postpartum hemorrhage simulation features a Hispanic mom who just birthed twins. Students develop and implement a group teaching project, which focuses on an aggregate group of their choice.

Diversity in Courses

Pre-Licensure Baccalaureate

- NUR 370 Pediatrics - Students work with children in the community in an after school educational enrichment program, Motivate Our Minds, which serves to educate and promote personal development to a diverse population. Another example is Head Start.
- NUR 406 Childbearing Family – Students attend a prenatal clinical for pregnant women who are uninsured or underinsured at Open Door Health Services. Students participate in providing medical care and also learn about other programs provided, such as the Baby and Me, Tobacco Free program, and WIC that are offered to women and families with limited health care resources.
- NUR 404 Community Health – Students have clinical experiences at LifeStream that provides services for aging and disability individuals in East Center Indiana, school nurses in a variety of community settings, assist with kindergarten round-up, and implement population focused teaching project.
- NUR 370 Pediatrics, NUR 404 Community Health, and NUR 406 Childbearing Family students have clinicals in clinics that serve individuals, families, and aggregates who have limited availability of health care resources.

Post-Licensure Baccalaureate

- NUR 401 Applied Nursing Concepts - Students discuss multi-problem family case studies, a family case study focusing on a cultural and religious dilemma in which students debate the parental rights and health care system rights, and write an evidence-based paper on vulnerable individuals and families.
- RN-BS 404 Community Health - Students conduct a population-focused project selecting an aggregate and use the social determinants of health, identify a variety of local, state and national assessment resources, conduct a windshield survey, and implement a teaching project based on the priority need of the aggregate and key informants.
- NUR 303 Physical Assessment - Students use the Shadow Health programs that include diverse patients.

Curriculum - Master's

Both clinical and non-clinical courses in the master's program provide students with learning opportunities with individuals and groups from diverse backgrounds, perspectives, and life experiences. For example, all students in the master's program participate in case studies featuring diverse ethnicities, cultures, ages, and care settings in NUR 603 Nursing Theory and NUR 605 Nursing Information Technology. Students assess and plan care for a pregnant African-American adolescent who is a victim of incest, a young adult male living in Appalachia

with recurrent sexually transmitted infections, a group of middle-aged females living in a faith-based community who struggle with opioid addiction, and an individual of ethnic minority living in a rural Midwestern community. In addition, students' critique and discuss a theory for transcultural nursing care.

In NUR 610 Nursing Concepts in Health Promotion/Disease and Injury Prevention in Populations, a required course, students have an opportunity to select a population with cultural distinctions and then focus course assignments on this population. Recently, students gained clinical experiences in senior citizen centers, prenatal clinics in low-income communities, homeless shelters, dialysis centers, and mental health facilities. Students explore the social and cultural dimensions of health through client interviews and apply the concepts in their selected settings. Students plan care following theoretical frameworks appropriate for transcultural care. Students identify research questions that address cultural issues in a variety of health care settings.

Students in the educator concentration have opportunities to explore case studies and teach individuals with diverse backgrounds. Students in NUR 672 Practicum in Role Expectations for Educators reflect on incivility and sexual harassment as perceived by students with various life perspectives through journal entries and discussion postings. Students practice clinical and classroom teaching with students of varying demographics and cultural values. Students in NUR 609 Health Assessment complete physical assessments and explore case studies on patients with varying characteristics, in preparation for teaching diverse student groups who care for diverse patient groups.

Students in the administrator concentration are exposed to diversity in patients and staff and are sensitized to diversity in health care workplaces. Through many course assignments in NUR 640 Nursing Administration in Complex Organizations, NUR 642 Administrative Management for Nurses, and NUR 643 Financial Management for Nurses, students design strategies for managing individuals and groups of a wide variety of backgrounds. For example, students complete assignments on patient care models for diverse populations (NUR 640), performance appraisal for diverse staff members (NUR 642), and planning for quality improvement in organizations that serve diverse patient populations with diverse staff (NUR 643). Clinical experiences in NUR 643 expose students to diverse settings, including hospital units (e.g., medical surgical, surgical recovery, emergency department, and critical care), healthcare facilities (e.g., nursing homes, residential care facilities, and one-day surgical sites), free-standing clinics (e.g., home care agencies, hospice, and cancer clinics), schools, or related sites.

Students in the family nurse practitioner (FNP) concentration have opportunities to explore case studies and deliver direct care to individuals with diverse backgrounds. In NUR 638 Pharmacology, for example, students address cultural and ethnic considerations related to the prescribing of medications. In NUR 634 Physical Assessment, students' complete cultural assessments on diverse patients and plan culturally-sensitive care. In the NUR 681 Primary Care of Adult I, NUR 682 Primary Care of Children, NUR 683 Primary Care of Adult 2, and NUR 684 Primary Care of Women practicum courses, students have planned clinical experiences; students are encouraged to select their practice setting and patient experiences with attention to multidimensional diversity. Clinical experiences include caring for clients in obstetric settings

and family planning clinics with highly variable personal and medical histories (NUR 684); adult clients in internal medicine practices with chronic illnesses and multiple co-morbidities (NUR 681, 683); and children in pediatric outpatient settings and their families whose cultural and economic backgrounds shape plans for treatment and health promotion (NUR 682). Students write case studies and discussion postings focused on patients with diverse characteristics that shape the diagnosis and treatment plan (NUR 681; NUR 673 Practicum-Family Nurse Practitioner).