



**LIFETIME  
LEARNING**  
by Ball State

# WINTER 2026 CATALOG





## ***Dear Cardinal Community,***

At Ball State University, learning never stops—it evolves with you. Whether you're a current student preparing for your next step, an alum seeking to advance your career, or a community member ready to explore new opportunities, Ball State Lifetime Learning has something for everyone. Our mission is simple: to help you build real-world skills, earn respected credentials, and stay ahead in a changing world. When Cardinals aim higher, We Fly.

Today's workforce is transforming faster than ever, and Ball State is meeting that challenge head-on.

We're focused on the skills that matter most:

- Healthcare & Community Health – Preparing professionals to meet growing needs in patient care and community wellness
- Technology & Data – Building expertise in analytics, cybersecurity, and digital transformation
- Education & Leadership – Supporting teachers and leaders with mentoring, communication, and leadership development
- Business & Project Management – Strengthening innovation, entrepreneurship, and organizational success

These programs—and many more—reflect Ball State's enduring belief that education should open doors at every stage of life. Thank you for being part of our lifelong learning community.

Warm regards,

**Amy Barsha**

Assistant Vice Provost, Lifetime Learning by Ball State





# CONTENTS

Welcome Letter . . . . . 2

Alumni . . . . . 4

- Project Management
- Leadership and Personal Branding
- Technology Programs
- Programs for Teachers

Businesses. . . . . 8

Community . . . . . 10

- Ways to Pay for Courses
- Healthcare
- Technology and Data
- Cybersecurity
- Business Management and Leadership
- Education and Human Development
- Creative and Professional Enrichment

Unemployed or Underemployed. . . . 14


Students. . . . . 15


- edTPA and Skills courses
- Workforce Ready Grant

## CONNECT WITH US

765-285-8565

[lifetimelearning@bsu.edu](mailto:lifetimelearning@bsu.edu)

 [lifetimelearningatballstate](https://www.facebook.com/lifetimelearningatballstate)

 [ballstate\\_lifetimelearning](https://www.instagram.com/ballstate_lifetimelearning)

 [ball-state-university-lifetime-learning](https://www.linkedin.com/company/ball-state-university-lifetime-learning)

*For course adaptations or accommodations because of a disability, please fill out the [self-disclosure form](#). The [Office of Disability Services](#) coordinates services for students with disabilities. Documentation of a disability must be on file in that office before any accommodations can be provided.*



**Join us at Ball State Fishers!  
Indiana Certified Public  
Manager® (CPM) Program -  
Phase 1  
Fishers • September 11 & 16**

Accredited by the National Public Manager  
Consortium and offered by the Bowen  
Center for Public Affairs, this program  
helps public managers lead with purpose.



# ALUMNI

## Revisit Ball State to Open New Doors.



Build real-world skills, earn respected certifications, and stay ahead in a changing world. When Cardinals aim higher, **We Fly.**

“ The fact that the program was 100% online was absolutely what I enjoyed best. Also, having access to all the videos and online resources so that I can go back and review whenever I want was absolutely perfect. ”

– Christopher Ittenback, Ball State Alumnus  
Course: Clinical Medical Assistant Program

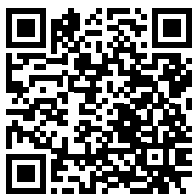
# Project Management Certifications

## **Certified Associate in Project Management (CAPM®) Exam Prep**

Ideal for early-career professionals, CAPM® builds essential skills to plan, execute, and manage projects effectively—preparing you for leadership and future certification.

## **Project Management Professional (PMP®) Exam Prep**

Globally recognized, the PMP® validates your ability to lead complex projects and deliver results. Designed for experienced managers, it strengthens your expertise in strategy, agile practices, project planning, budgeting, and stakeholder communication.



# Leadership and Personal Branding

## **Identity Leadership with Stedman Graham**

Discover how to lead with authenticity and purpose. Based on Stedman Graham's Identity Leadership framework, this course helps you clarify your goals and build the mindset to lead effectively.

## **Leading Organizational Innovation**

Take a comprehensive approach to innovation by integrating business strategy, audience understanding, culture development, and organizational communication. Through practical, cross-functional techniques and tools, participants learn to build systems that bridge the gap between vision and execution.



# Technology Skills

Build the digital expertise employers want, and stay ahead of the curve with certifications and courses that prepare you for the future of work.

**Artificial Intelligence for Business** is an online program for learners seeking a competitive edge in emerging business technology. Learn general artificial intelligence (AI) and prompt engineering, productivity hacks, and more. The additional AI courses offered are tailored to students, K-12 teachers, and others.

## AWS and Cloud Computing

Get hands-on training in cloud infrastructure, deployment, and management using Amazon Web Services. Participants gain the technical skills and practical experience needed to design, implement, and maintain scalable cloud solutions for modern business environments.

## Data Analysis: Statistics Fundamentals

Data fuels decisions, innovation, and critical customer insights. This course is perfect for professionals and graduate students. It covers data ethics, descriptive statistics, causal inference principles, and the data analysis software tools SPSS, STATA, and R.



# Programs for Teachers and Educators

Advance your teaching and leadership with teacher mentoring courses from Ball State's Teachers College.

## Mentoring an Early Childhood Education Apprentice

Learn how to effectively mentor early childhood education apprentices by modeling best practices, fostering reflective learning, and supporting professional growth in early learning environments.

## Mentoring New Aspiring Teachers

This course prepares experienced educators to guide aspiring teachers through their initial teaching experiences, emphasizing mentorship strategies that build confidence, skill, and classroom readiness.





# BUSINESSES

**Lifetime Learning's customized contract training helps you build the mindsets, skills, and communication practices to drive transformation—and inspires innovation for lasting success.**



## **BALL STATE FISHERS**

Plan to host your next event, workshop, or off-site team meeting or strategy session at the new Ball State Fishers!

8626 E. 116th Street, Suite 300  
Fishers, IN 46038  
[bsucenters@bsu.edu](mailto:bsucenters@bsu.edu)

### **Community ESL: Improve English skills at Ball State Fishers!**

Eight-week sessions teach reading, writing, speaking and online communication. Email [nrhill@bsu.edu](mailto:nrhill@bsu.edu) for details.



# Customer Experience and Sales

**The Customer Experience Excellence (CXX)** training series strengthens Indiana's tourism industry with affordable, self-guided modules and engaging videos filmed at more than 20 locations statewide. Hosted by Greg Zirkle, director of business and executive programs and a certified customer experience professional, the series equips businesses of all sizes to elevate guest interactions and transform everyday experiences into exceptional ones.



The smartest strategies and best-laid plans depend on a critical connection to pay off: **Sales.**

Upskill your sales team and exceed your sales targets with workshops and training programs created by the Center for Professional Selling at Ball State's Miller College of Business. These workshops and programs are fully tailored to your business, industry, customer types, and goals. From targeted boot camp sessions to a customized series, speak with our director of business and executive programs to explore your options.

# Business Management and Leadership

## **SIMPLEXITY® Training**

In partnership with Ball State University's Entrepreneurial Leadership Institute, this program introduces a proven innovation and problem-solving framework with more than 40 years of success. Through hands-on facilitation, participants gain practical tools, creative techniques, and team-based strategies to generate solutions, enhance collaboration, and build a sustainable culture of innovation.

**Next Level Jobs (NLJ)** is helping elevate Indiana's workforce by offering free training, career exploration, and support in six high-demand industries projected to create the most job growth: advanced manufacturing, building and construction, early childhood education, health and life sciences, IT and business services, and transportation and logistics. Employers should take advantage of Indiana's NLJ **Employer Training Grants** to fund customized training or certifications for their teams. Schedule a free consultation.

## **Social Media Branding: Leadership and Storytelling**



Explore the full spectrum of social media brand management—from developing evidence-based leadership and data-driven strategies to building meaningful brand-consumer relationships—through storytelling and analytics.

“Greg was highly engaging with everyone involved, and I appreciated how real-life examples were integrated into the teaching. Using practical, real-world applications made the content both relatable and relevant to that specific class at that specific point in time. The Ball State: Fishers Center was also a great setting, its convenient location made it easy for participants to attend and fully engage in the short workshop format.”

— Reed M. Levitz, Director of Retail Banking  
Indiana Market, Northwest Bank

# COMMUNITY

## Invest in Growth. Advance with Purpose.

Explore programs that align with growing careers in Indiana and beyond. Designed for working professionals, these flexible, online programs offer an industry-aligned curriculum that meets national certification standards and focuses on real-world application. Open the doors to your next career chapter.



“ *The collaboration between myself and the other participants—knowing that there are other communities with the same type of needs and being able to discuss that in an open environment—has been very helpful.* ”

— Beth Shellman, Town of Albion, Ind.  
Course: Certified Public Manager®

## Accelerate the Journey: Credit for Prior Learning

Turn your experience into credit. Ball State's Credit for Prior Learning program recognizes your real-world skills and certifications—helping you save time and money on your degree.





# Healthcare

## Certified Clinical Medical Assistant (CCMA)

This online clinical training equips learners to prepare patients for treatment, administer medications, conduct routine lab procedures and pharmacology, take and document vital signs, learn technical aspects of phlebotomy, the 12-lead EKG, and the cardiac life cycle. Work-based learning externships are available—including National Workforce Career Association (NWCA) CCMA Certification and National Healthcareer Certification (NHA), if needed.

## Patient Care Technician

Dive into the essential aspects of patient care with our comprehensive course, covering key areas such as medical terminology, phlebotomy, and electrocardiography. Our program is designed to equip you with the professional skills needed to excel in these areas, setting a solid foundation for your career. With a focus on real-world application, our course offers a critical entry point towards a rewarding nursing career.

## Pharmacy Technician Training

Develop the technical and communication skills needed to support pharmacists in retail and clinical settings.



# Technology and Data

## Data Analysis: Statistics Fundamentals

This self-paced course provides an overview of data analysis, emphasizing the ethical balance between leveraging data benefits and protecting privacy. The course guides students to define key data management concepts, apply descriptive statistics, perform Chi-square tests, calculate correlations and regression lines, and effectively use SPSS and R for data analysis.

# Cybersecurity

**Build essential skills in network defense, risk management, and digital security—critical for protecting organizations in every sector.**

## Cybersecurity Analysis and Security Operations

Gain hands-on experience in identifying, analyzing, and mitigating cyber threats through real-world simulations and security tools. This course equips learners with the skills to monitor systems, respond to incidents, and strengthen organizational defenses against evolving digital risks.

## Ethical Hacking and Penetration Testing

Explore the mindset and methods of ethical hackers to uncover vulnerabilities before malicious actors do. Through guided labs and practical exercises, participants learn to conduct penetration tests, assess system security, and recommend effective countermeasures.





# Education and Human Development

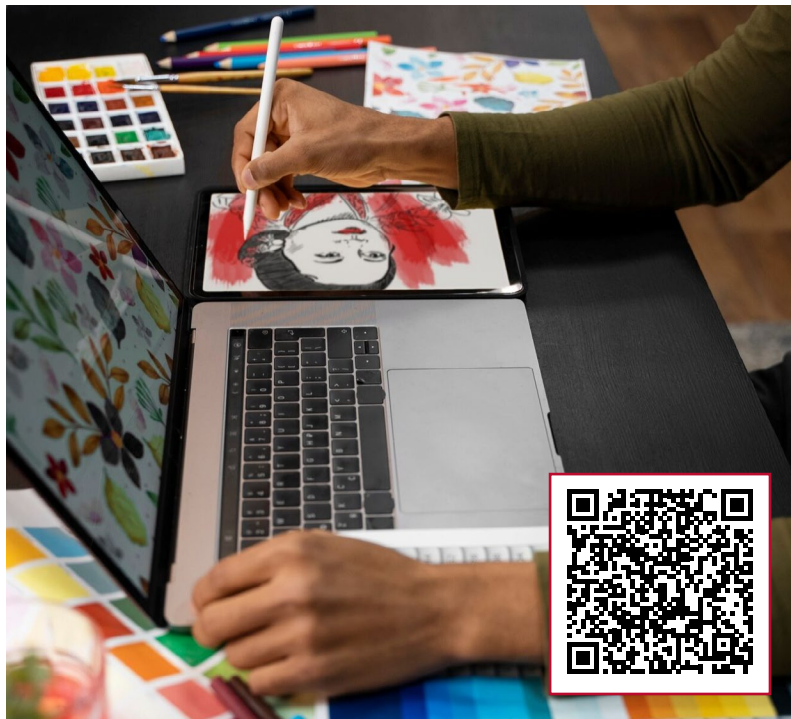
## Child Development Associate (CDA) Certification Prep

This course prepares students to become certified Child Development Associate professionals by applying developmental theories, observation techniques, and guidance strategies to support children's growth from birth to age five while meeting CDA education, portfolio, and field experience requirements. It emphasizes evaluating regulations, designing developmentally appropriate activities, and demonstrating professional competencies in early childhood settings.



## Music and Arts Education for Autism Spectrum Disorder

Explore how music and the arts can enhance learning, communication, and social engagement for students with autism, using evidence-based approaches to create inclusive and expressive classroom experiences.



# Creative and Professional Enrichment

## Photography Professional with Adobe Photoshop®

This program equips aspiring photographers with essential skills in camera operation, lighting, exposure, digital editing, and photo management to create purposeful, high-quality images. With training that includes Adobe Photoshop®, learners gain the artistic and technical expertise needed to thrive in a growing photography industry and elevate their professional work.

# Programs to Re-Enter the Workforce

## From Unemployed to an In-Demand Career!

Are you newly unemployed or underemployed? Improve your career prospects by training in a new field with help from the Workforce Innovation Opportunity Act (WIOA), a federal grant-funded re-training program. Community members who qualify may be eligible to receive free career training and pursue certification in high-growth fields. Certification exam fees are included!

Popular programs include:

- AWS Cloud Practitioner
  - Certified Associate in Project Management (CAPM®)
  - Certified Bookkeeper with QuickBooks
  - Child Development Associate
  - Clinical Medical Assistant
  - CompTIA A+
  - Computer Support Specialist
  - EKG Technician
  - Pharmacy Technician
  - Phlebotomy Technician
  - Risk Management Professional
- And More!

➤ **START** by creating an account in Indiana Career Connect and contacting your local WorkOne office to speak with a career advisor. Additional information can also be found at <https://intraining.dwd.in.gov/>. Search Provider Name: Ball State University.



Scan to review our approved programs



**Questions?** Contact Enrollment Specialist LaTonya Atkins: [Lifetimelearning@bsu.edu](mailto:Lifetimelearning@bsu.edu)

## Bilingual Clinical Medical Assistant—NEW!

This course equips bilingual learners with the English language and clinical skills needed to excel in medical assistant roles, emphasizing communication in healthcare settings. Students build confidence using medical terminology, patient interaction language, and workplace English essential for success in bilingual clinical environments.





# STUDENTS

Lifetime Learning offers non-credit credentials that help college students expand their professional skill sets and prepare for career success while completing their degrees. Students can take skills courses—such as AI for Students, Project Management certification preparation, and edTPA preparation—while pursuing a degree. These courses feature flexible, targeted learning experiences that build practical knowledge and enhance academic and career readiness.



## GOING INTO TEACHING?

edTPA is a performance-based, subject-specific assessment for pre-service teachers focused on student learning. It is used by more than 600 teacher preparation programs across the country. It is designed to emphasize, measure, and support the skills and knowledge that all teachers need from day one in the classroom.



# Certification Opportunities: Workforce Ready Grant



[Register for  
Certified Associate  
in Project Management  
\(CAPM®\)](#)

The Workforce Ready Grant (WRG) applies to Indiana students with a high school diploma and less than a bachelor's degree (citizens and eligible non-citizens). Qualified students will receive free certification training through the grant, including Certified Associate in Project Management (CAPM), Clinical Medical Assistant (CMA), Pharmacy Technician, and more!

69% of projected job openings in Indiana's key industry sectors will require a high school education plus additional skills training, often in the form of certifications or other non-degree credentials.\*

\*Ivy Tech Community College and TEconomy Partners Estimate Indiana's Annual Skills Training Demand, April 2025



# CAMPUS PARTNERS

## Other Professional Development Opportunities



Stay connected with your Ball State University community through Cardinals Connect—reconnect with classmates, see what fellow alumni are up to, and keep in touch. Give back by mentoring students, sharing career opportunities, and supporting the next generation of Cardinals.



Just because you graduated, doesn't mean you stopped learning. As an alum, you have exclusive access to a range of webinars and online events.



Explore cultural and personal enrichment classes to spark new hobbies, learn a new language, or dozens of other opportunities to keep learning and growing.







**LIFETIME LEARNING**  
by Ball State

765-285-8565

[lifetimelearning@bsu.edu](mailto:lifetimelearning@bsu.edu)

 [lifetimelearningatballstate](https://www.facebook.com/lifetimelearningatballstate)

 [ballstate\\_lifetimelearning](https://www.instagram.com/ballstate_lifetimelearning)

 [ball-state-university-lifetime-learning](https://www.linkedin.com/company/ball-state-university-lifetime-learning)

The information presented here, correct at the time of publication, is subject to change. Ball State University practices equal opportunity in education and employment. MC-80521-26