



# Tidepool

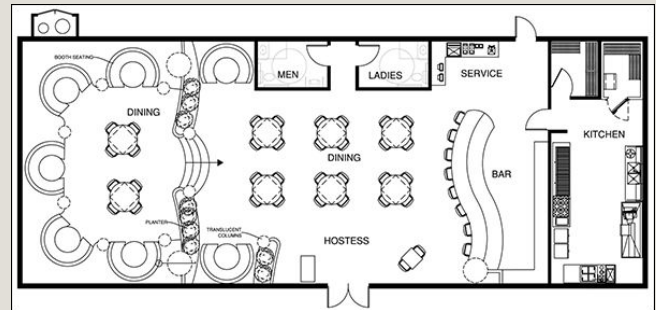
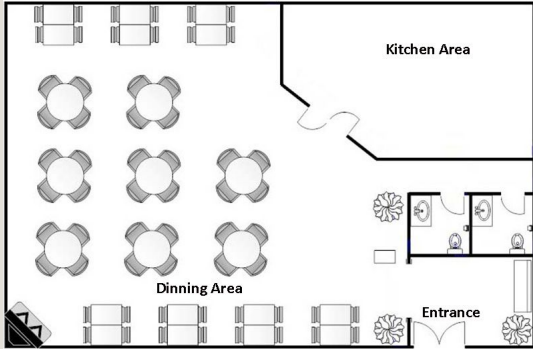
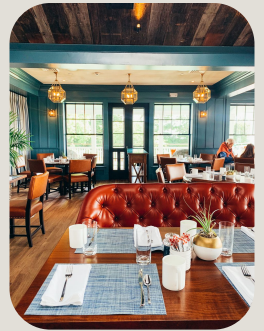
SEAFOOD

CAPE COD, MASSACHUSETTS

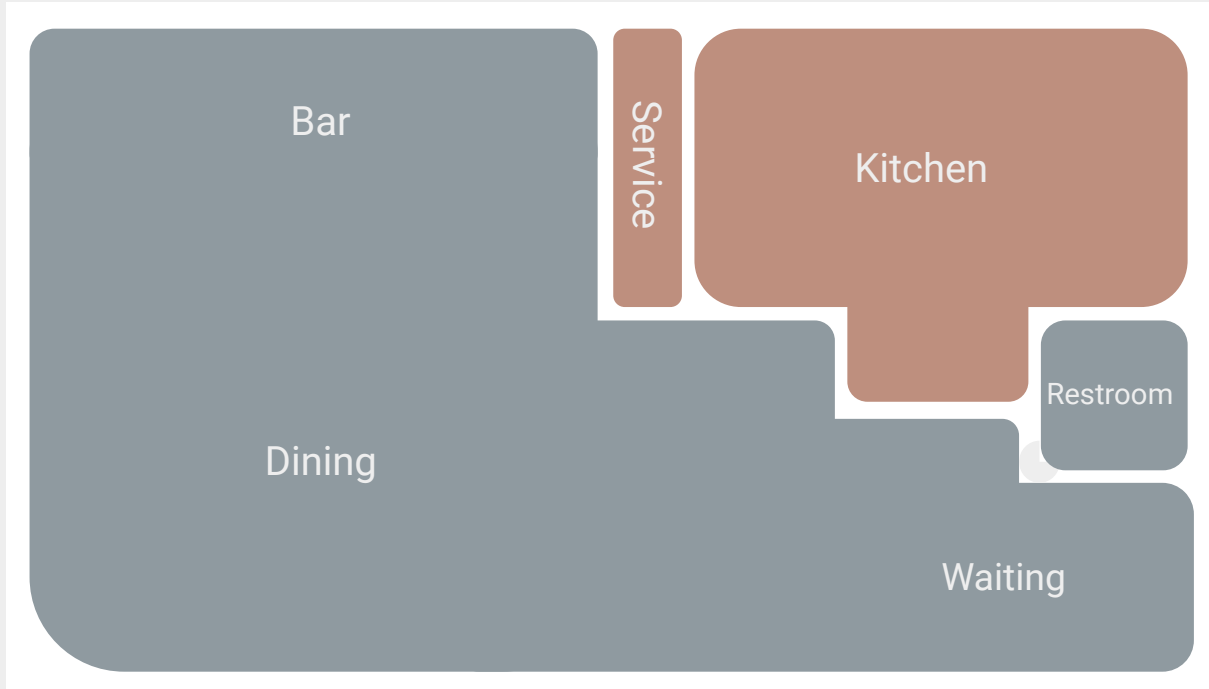
Lauren Cohn

# DESIGN STATEMENT

On the shores of Cape Cod, Tidepool embraces its coastal location and elevates the charm of its surrounding environment. Timeless sophistication and nautical elements are integrated through sandy white walls, light-toned wood, and accents of blue and coral create a fresh and airy ambiance. Large windows in the dining space invite natural light and provide glimpses of the surrounding coastal landscape, ensuring a seamless connection between the interior and the tranquil outdoors.



# Design Process



Employee Access

Public Access

# Furniture plan



1



2



4



3





# Furniture plan



5



9



7



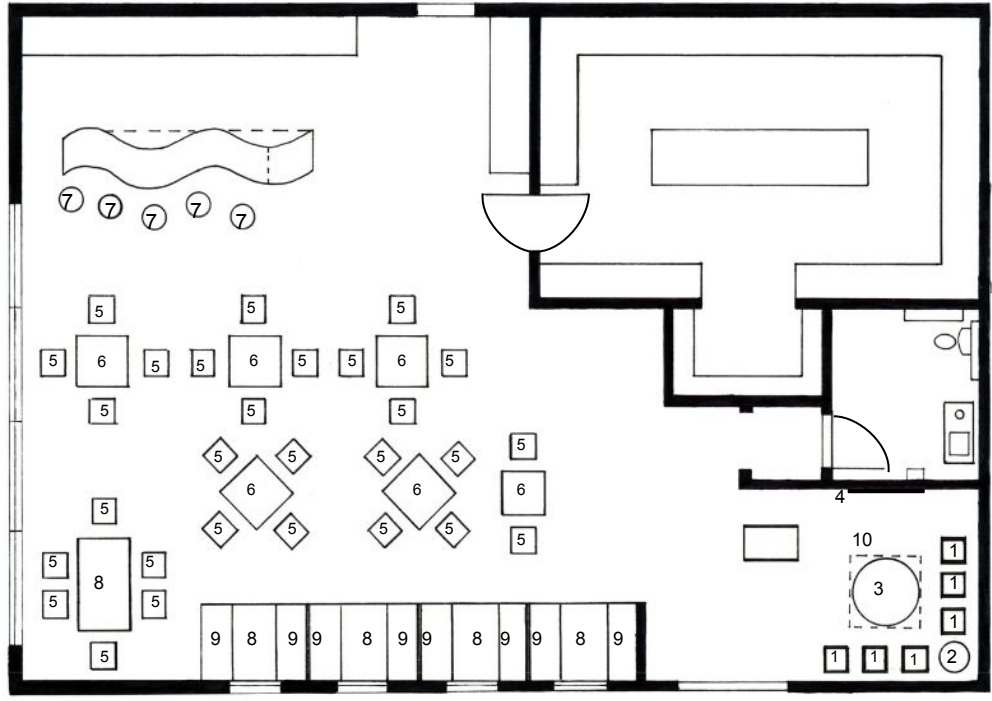
8



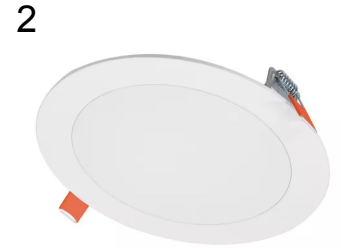
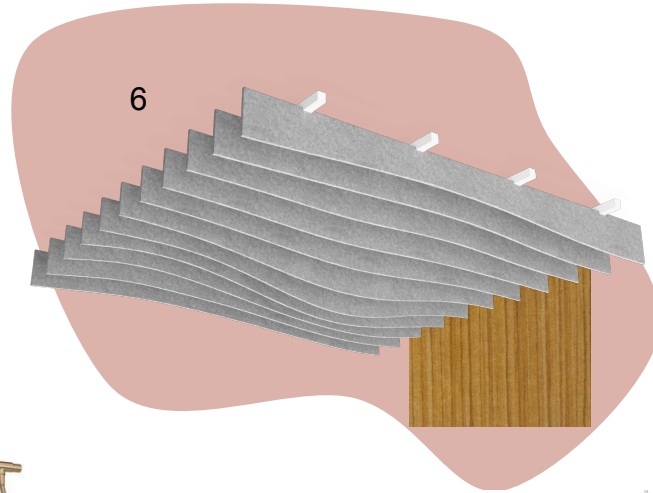
6

# Furniture Plan and Schedule

Number:	Size:	Color-Material:	Quantity:	MFC:
1	32.5"H x 23 "W x 22.7"D	Beige	4	Corrigan Studio
2	18"H x 13" dia.	Terracotta	1	West Elm
3	40"L x 40"W x 16"H	Walnut	1	Chadwick
4	50" x 1" D	Black	1	samsung
5	31"H x 18.5"W x 20.5"D	Oslo Blue	28	Rus
6	59"W x 59"D x 29"H	White	6	POLYWOOD
7	29"H x 17.25"W x 19"D	Light Oak	5	Rus
8	38"W x 73"D x 29"H	White	5	POLYWOOD
9	24"D x 48"H x 48"W	custom	8	DN
10	8' W x 10' L	Blue	1	West Elm



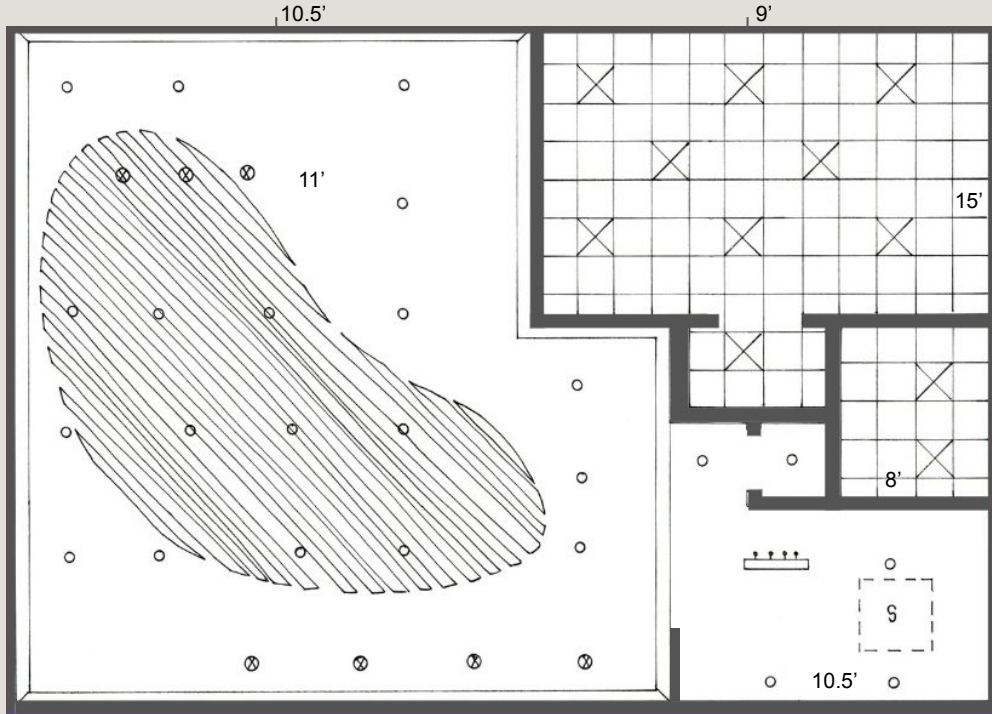
# Reflected ceiling plan









Number:	Size:	Color-Material:	Quantity:	MFC:
1	18"W x 17"D x 27H	brown	4	Kouboo
2	1.3"H x 6"W x 6" D	white	24	HALO
3	2'W x 2' L x 1.7"H	white	11	Lithonia
4	32" W x 9" H	brass	1	Open Box
5	18"W x 27"H x 79"L	brass	3	EDISLIVE
6	7.5' W x 7.5' L	white oak	4	Arktura



# Reflected Ceiling



-  - 6" recessed light
-  - Pendant light
-  - 32" Track Light
-  - Gypsum Board
-  - 2' x 2' ACT
-  - 2' x 2' Recessed Ceiling Light

Number:	Size:	Color-Material:	Quantity:	MFC:
1	18"W x 17"D x 27H	brown	4	Kouboo
2	1.3"H x 6"W x 6" D	white	24	HALO
3	2'W x 2' L x 1.7"H	white	11	Lithonia
4	32" W x 9" H	brass	1	Open Box
5	18"W x 27"H x 79"L	brass	3	EDISLIVE
6	7.5' W x 7.5' L	white oak	4	Arktura

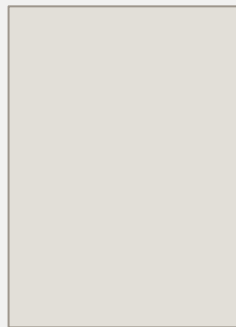
# Finish plan



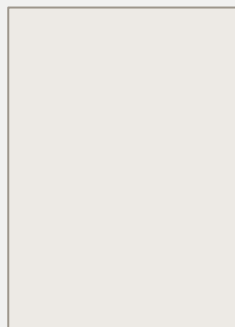
U1



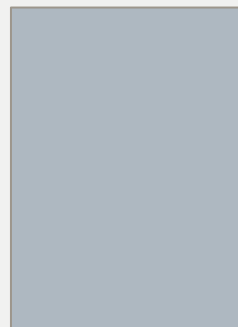
U2



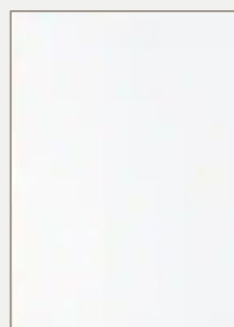
P1



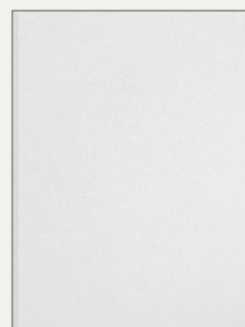
P3



P2



G1



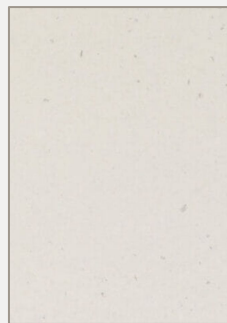
ACT



W1



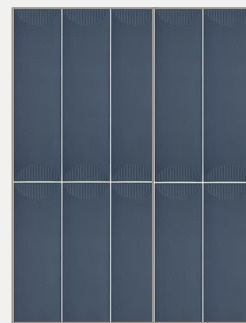
F1



C1



T2



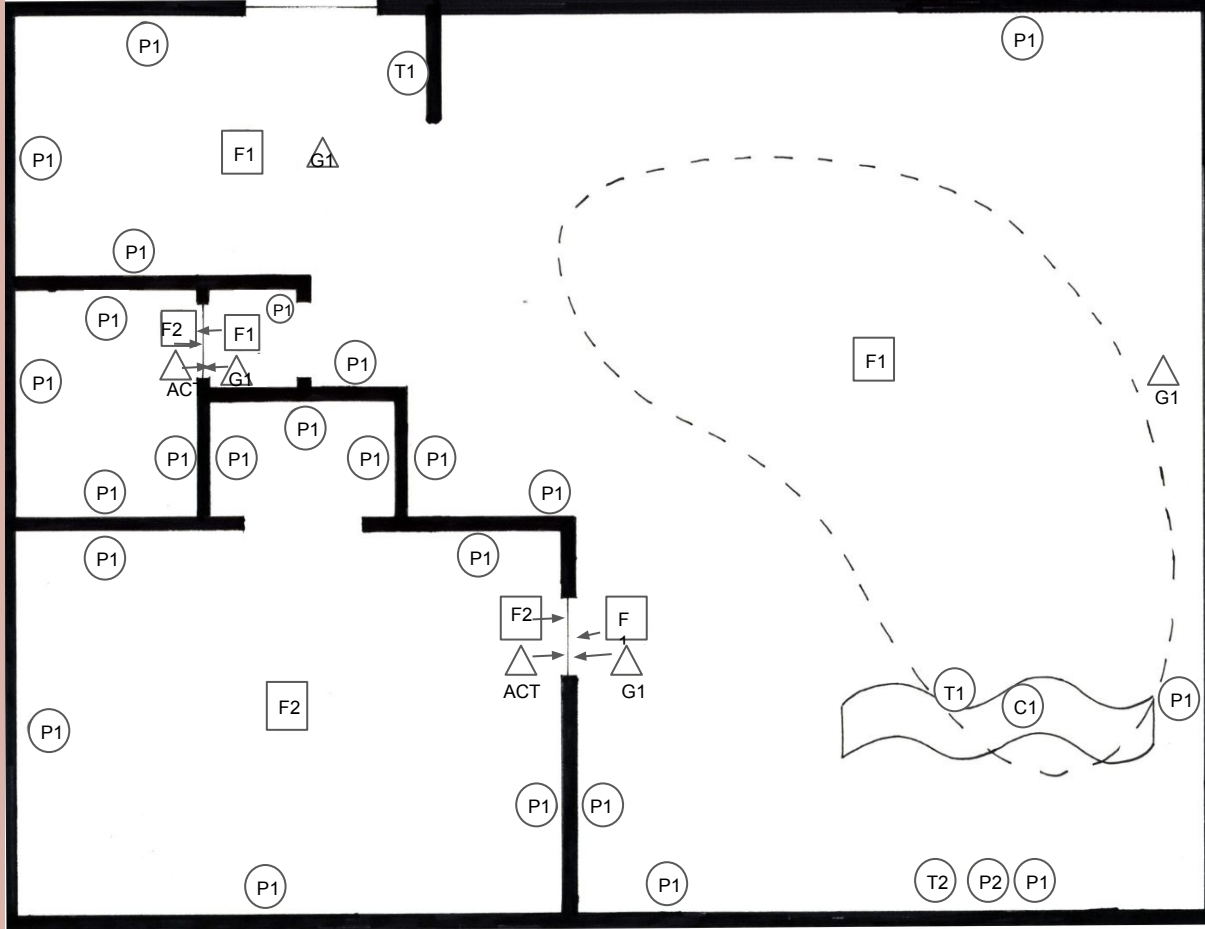
T3



F2

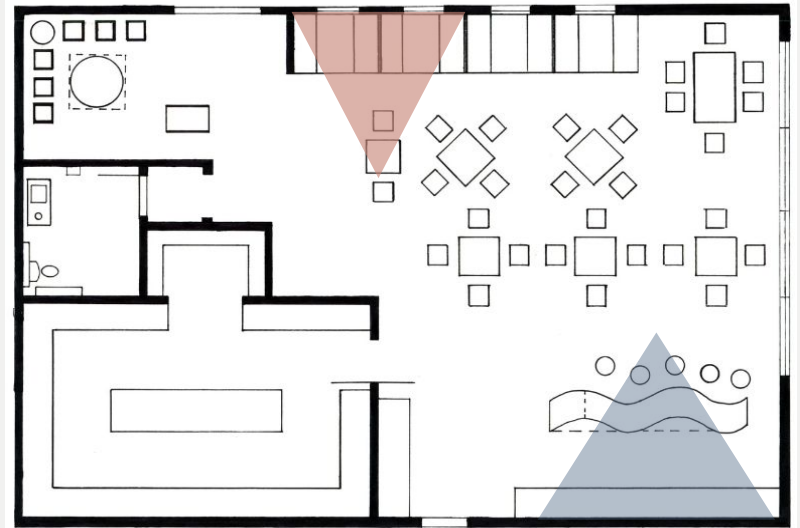
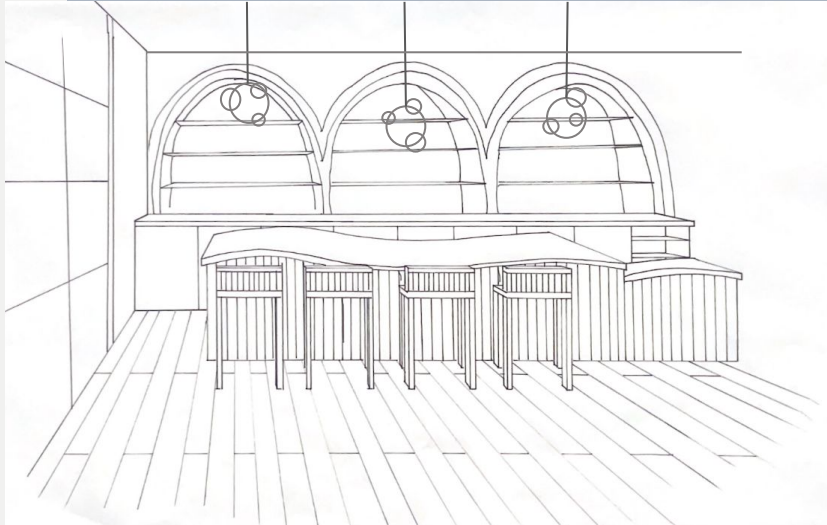
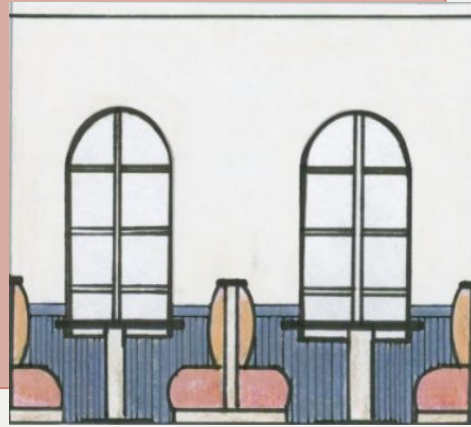
# Finish Plan

-Flooring  
 -Ceiling  
 -Walls



Number:	Color-Material:	Quantity:	MFC:
F1	Wood	1165	Gaithersburg
F2	Rust tile	72	Architessa
P1	Alabaster	1584	Sherwin Williams
P2	Aleutian	126	Sherwin Williams
P3	High reflective white	1105	sherwin williams
T1	Blue tile	140	Daltile
T2	Cream tile	24	Garden State Tile
W1	Wainscoting	86	House of FARA
C1	Countertop	40.5	Caesarstone
G1	Gypsum	1105	American Gypsum
ACT1	Tile	226	Armstrong
U1	Light saddle	36	Nauga
U2	Clay	36	Pallas

# Elevation Plan and Perspective Drawing





Tidepool

SEAFOOD

CAPE COD, MASSACHUSETTS

Thank You