



Blue Basin Bar & Grill

By Emily Schuster

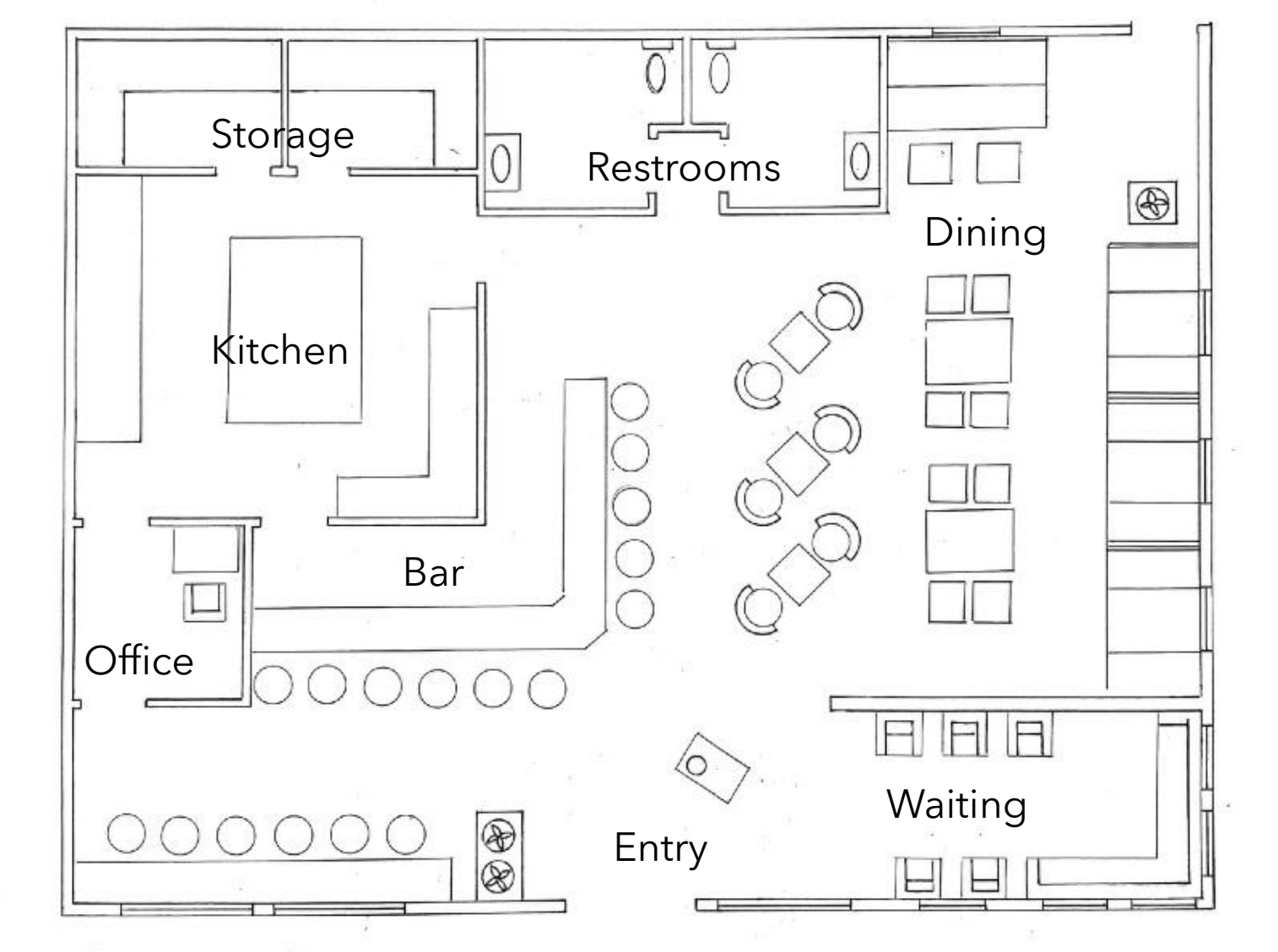
Design Statement

The Blue Basin is a luxurious and authentic Mediterranean Restaurant located in downtown Hayward Wisconsin. It was designed to bring the balmy coastal atmosphere and delicious food of the Mediterranean to a cooler climate. Throughout the restaurant, bold shades of blues and oranges give the dining space a bright and fresh feel. The pattered tiling and arched windows tie in traditional Mediterranean décor.

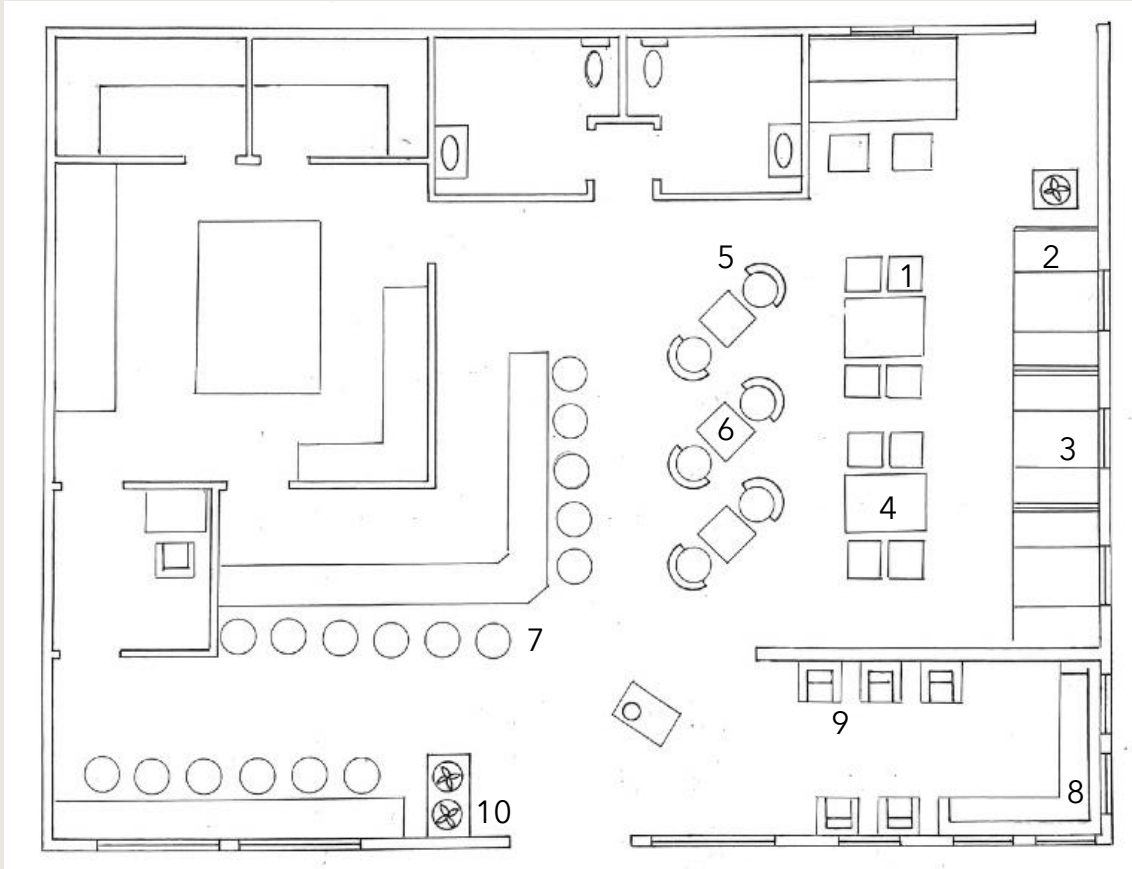
Inspiration



Final Floor Plan



Furniture Plan and Schedule

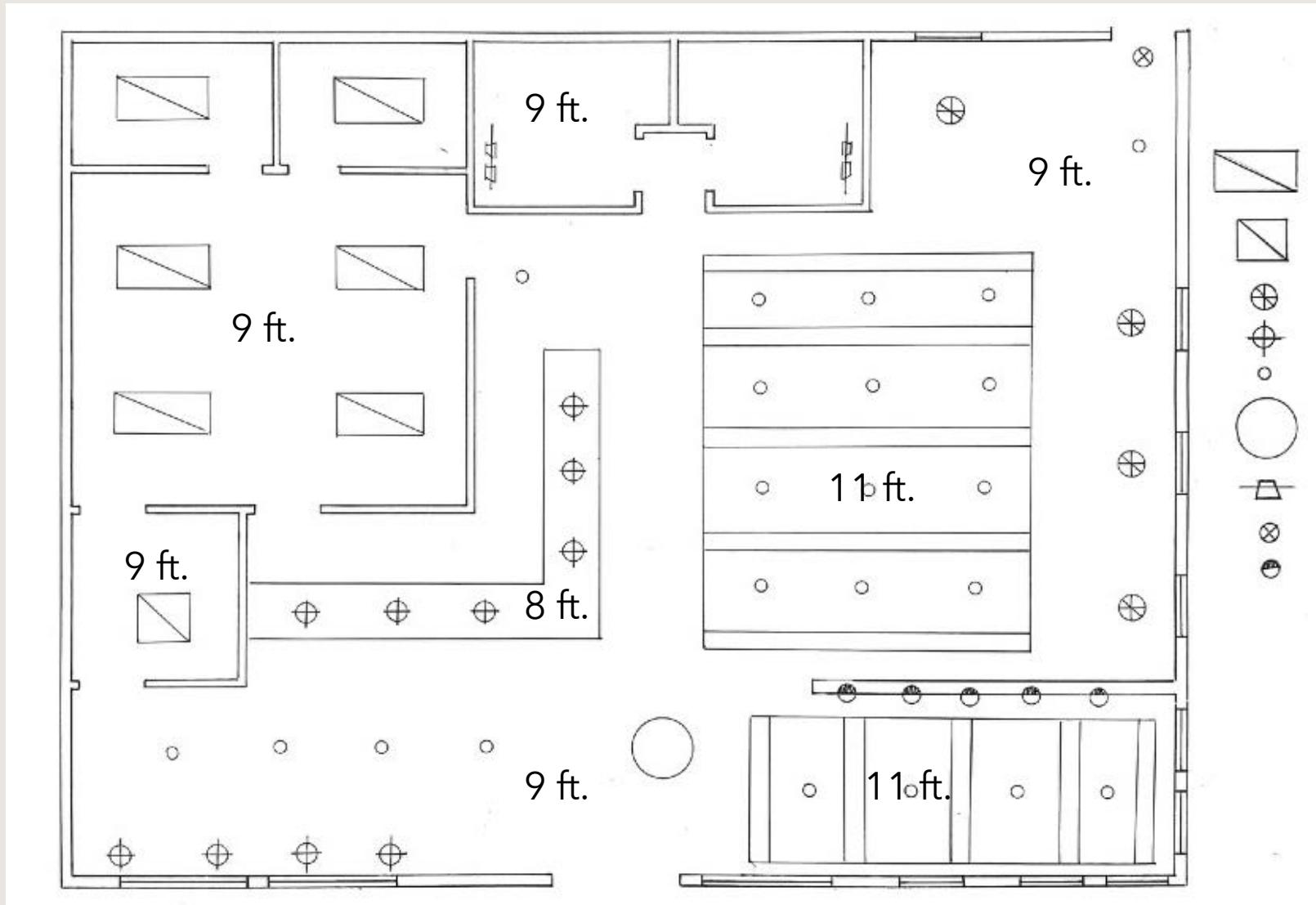


#	Product	Size	Color	Quantity	MFC	Remarks
1	Dining chair	33"x19"x22"	Orange	10	Wayfair	4 seaters
2	Booth	48"x 36"x36"	orange	6	Seating Expert	Dining
3	Booth table	48"X36"X30"	Dark wood	3	Wayfair	Dining
4	Table	48"x24"x30"	Light wood	2	James + James	Dining
5	Dining chair	24"x24"	oak	6	James + James	Dining
6	Table	24"x24"x30"	Light wood	3	James+ James	Dining
7	Bar/ Window seat stool	12"X12"x24"	Blue	17	Katom	Bar and window seating
8	Waiting love seat	79"x33"x34"	Beige	2	Castlery	Waiting room
9	Waiting chair	34"X35"x34"	Beige	5	Castlery	Waiting room
10	Plant Pots	varied	white	3	Scenario Home	Entry

Furniture



Reflected Ceiling Plan

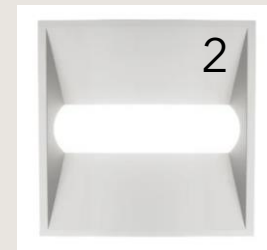


Legend

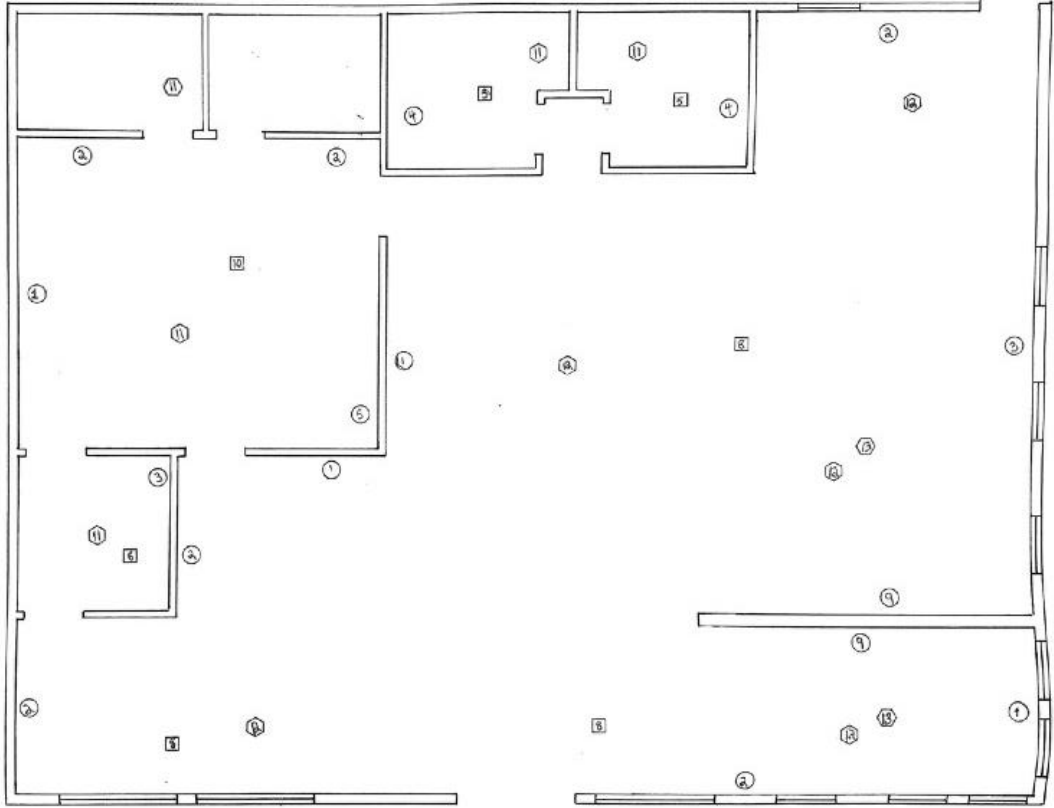
- Fluorescent light 2x4
- Fluorescent light 2x2
- Pendant light 1
- Pendant light 2
- Recessed light
- Chandelier
- Bath sconce
- Exit light
- Wall wash

Lighting Plan and Schedule

#	Product	Size	Color	Quantity	MFC	Remarks
1	Fluorescent Light	2'x4'	White	6	Superior Lighting	Kitchen
2	Fluorescent light	2'x2'	White	1	Alcon Lighting	Office
3	Pendent light 1	18.5" d	Antique Nickel	4	Capital Lighting	Booths
4	Pendent light 2	8"d	Polished brass	10	Dounia Home	Bar and Banquette
5	Recessed light	6"d	White	22	Lowes	Entry and Dining
6	Chandelier	33"x 31"	Oak	1	Lamps Plus	Entry
7	Bath sconce	6"x7" x10"	Bronze	2	Pottery Barn	Restrooms
8	Wall wash	6.5"x 5"	Black	5	Nuvo Lighting	Waiting Rooms




Finish Plan and Schedule



 - Floor

 - Wall

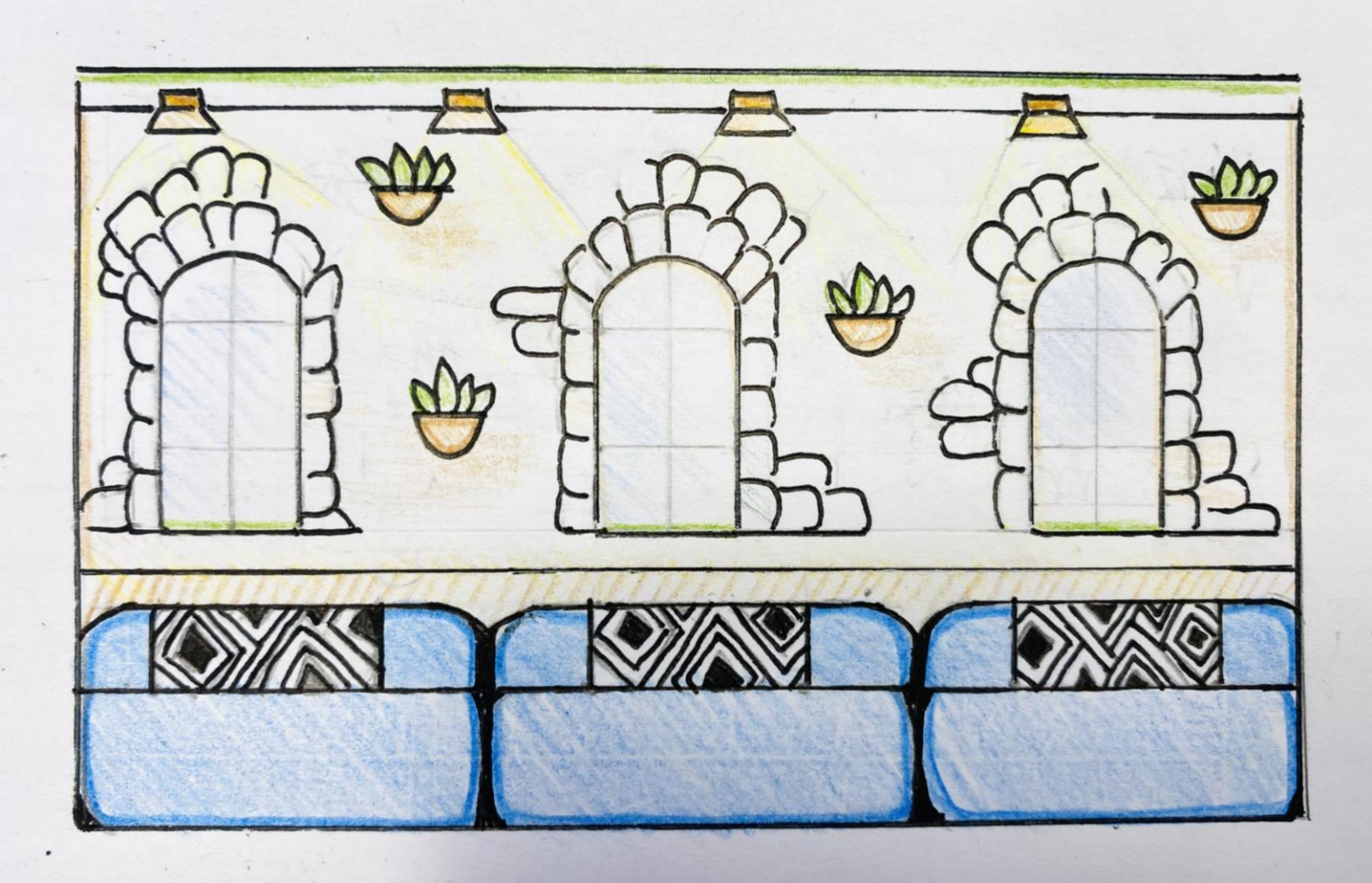
 - Ceiling

#	Product	Size	Color	Quantity	MFC	Remarks
1	Brown paint	N/A	Earthen Jug	N/A	Sherwan Williams	None
2	Tan paint	N/A	Spiced Cider	N/A	Sherman Williams	None
3	Dark blue paint	N/A	Gulfstream	N/A	Sherwan Williams	Accent wall
4	Light Blue paint	N/A	Mariner	N/A	Sherman Williams	None
5	Patterned Tile	12"x12"	B&W	128 sq ft	Lili Cement	Bathroom
6	Marble	N/A	White	58 sq ft	Radianz Quartz surfaces	Bar counter top
7	Black Tile	6"x6"	Black	N/A	Home Depot	Kitchen
8	LVT wood flooring	N/A	Wood	880 sq ft	Mannington	Dining, Entry
9	Brick	8"x4"	White	144 sq ft	Lowe's	Waiting Wall
10	Vinyl floor	N/A	Wood	400 sq ft	Greatmats	Kitchen
11	Ceiling tiles	24"x24"	White	610 sq ft	ProCeiling Tiles	Kitchen, Office, Restroom
12	Dry Wall	N/A	White	968 sq ft	Lowe's	Dining
13	Ceiling beams	7' long/ 15' long	Wood	10	Barron Designs	Dining, Waiting

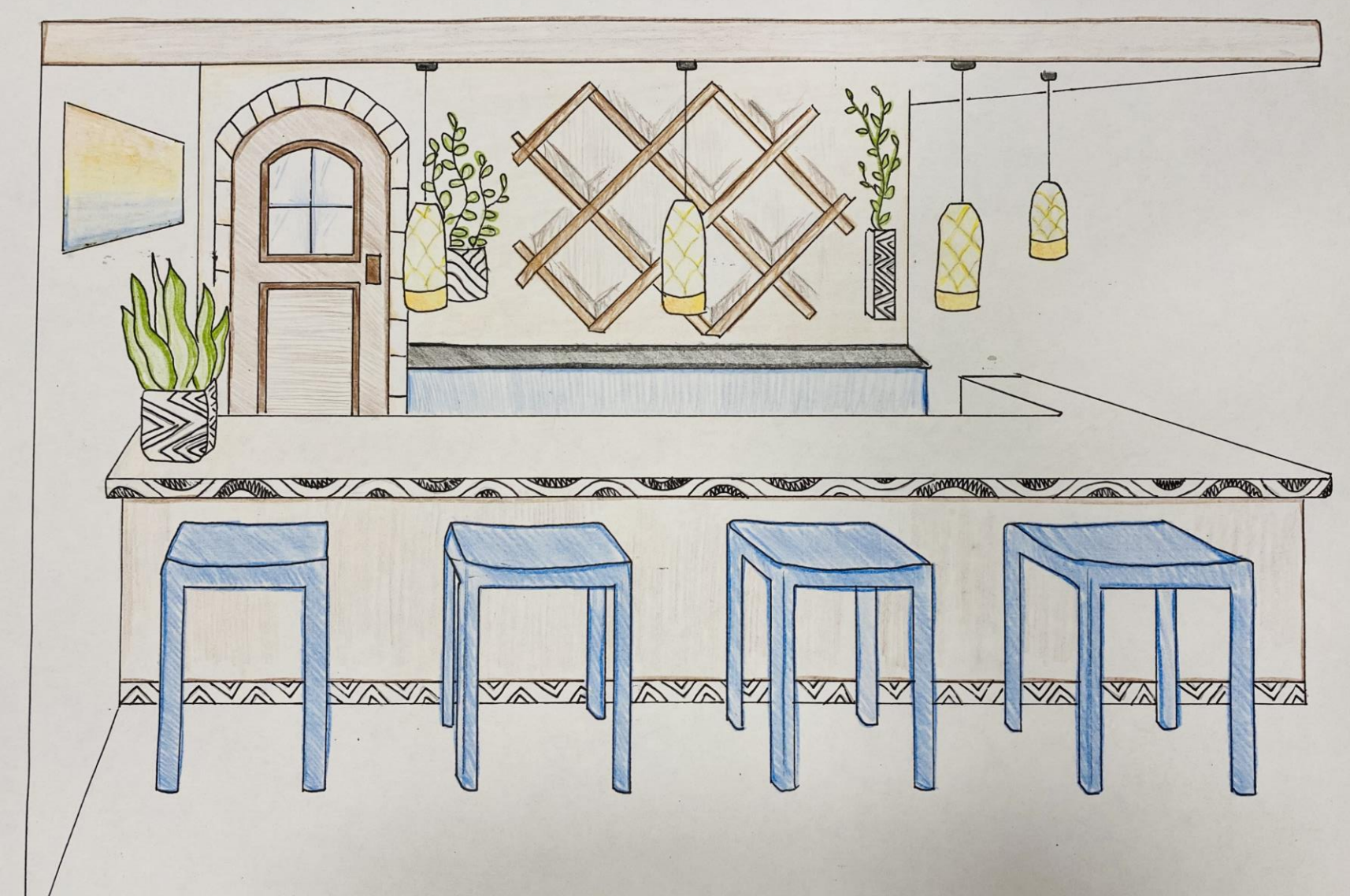
Finishes



Elevation Drawing



Perspective Drawing



Thank You

