

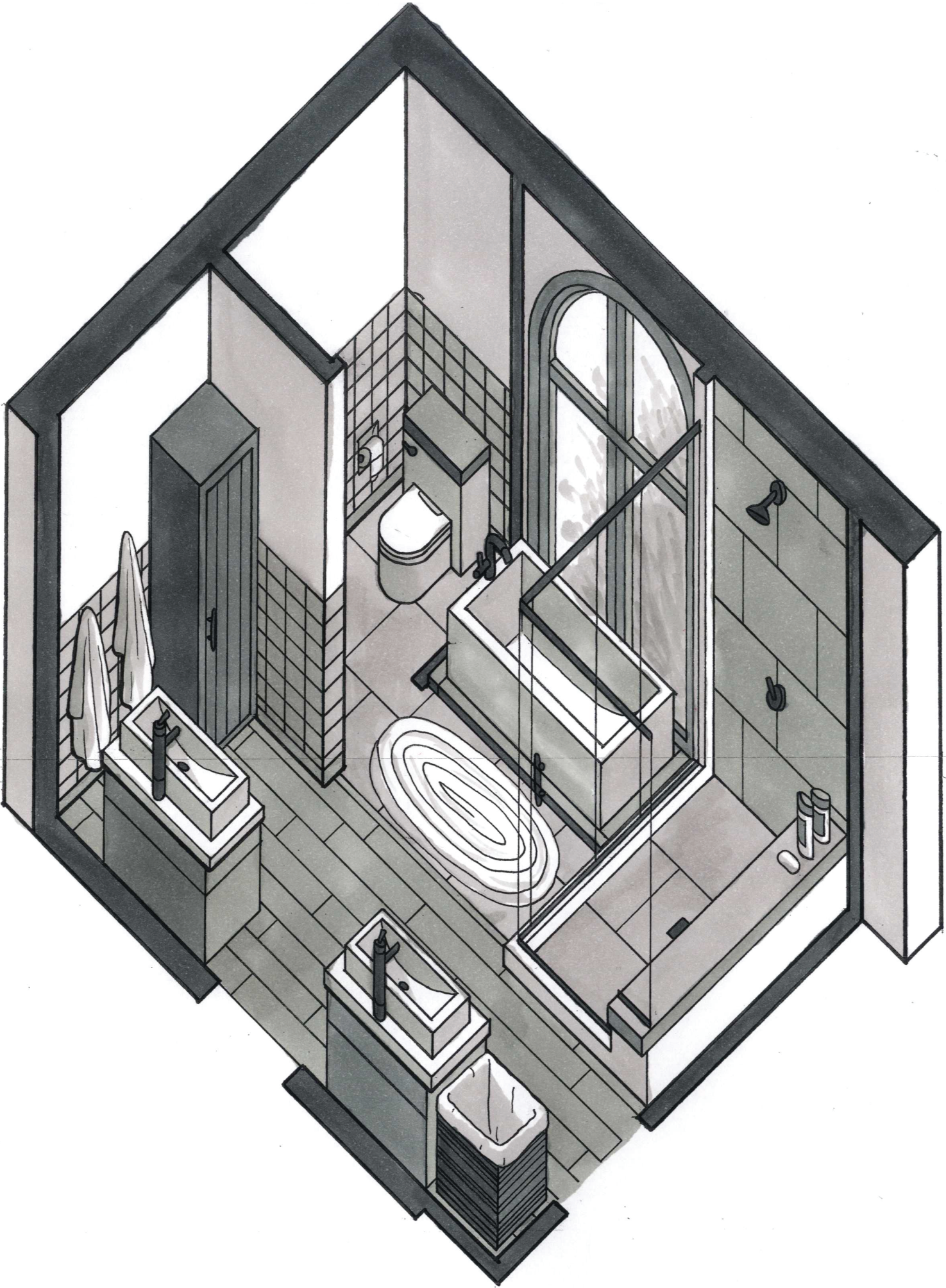
Elevations – Kelsey Slaven

Students were tasked with creating an elevation of a kitchen sink wall. These elevations were hand-drafted. Students created a black-and-white image as well as a hand-rendered one. Students were asked to use line weights, with the use of three different thicknesses of pens, to establish shadows in an effort to give the 2D drawing more depth. This hand-rendering was completed with alcohol markers and colored pencils.



Axonometric - Timothy Duke

Students were given the task of hand-drafting an axonometric view of a bathroom, the students were encouraged to use their design skills to elaborate and add details to the space. Drafting was done with a set of fine-line pens to create different line weights. The images were then hand-rendered in black and white with the use of alcohol markers.



Two Point – Maddi Curless

While learning two-point perspectives students were given the task of drawing a two-point perspective from a scaled floorplan and a handful of photographs highlighting details of the space. This two-point perspective of a living room was created with a minimum of three different line weights achieved with a set of fine-line pens.

