

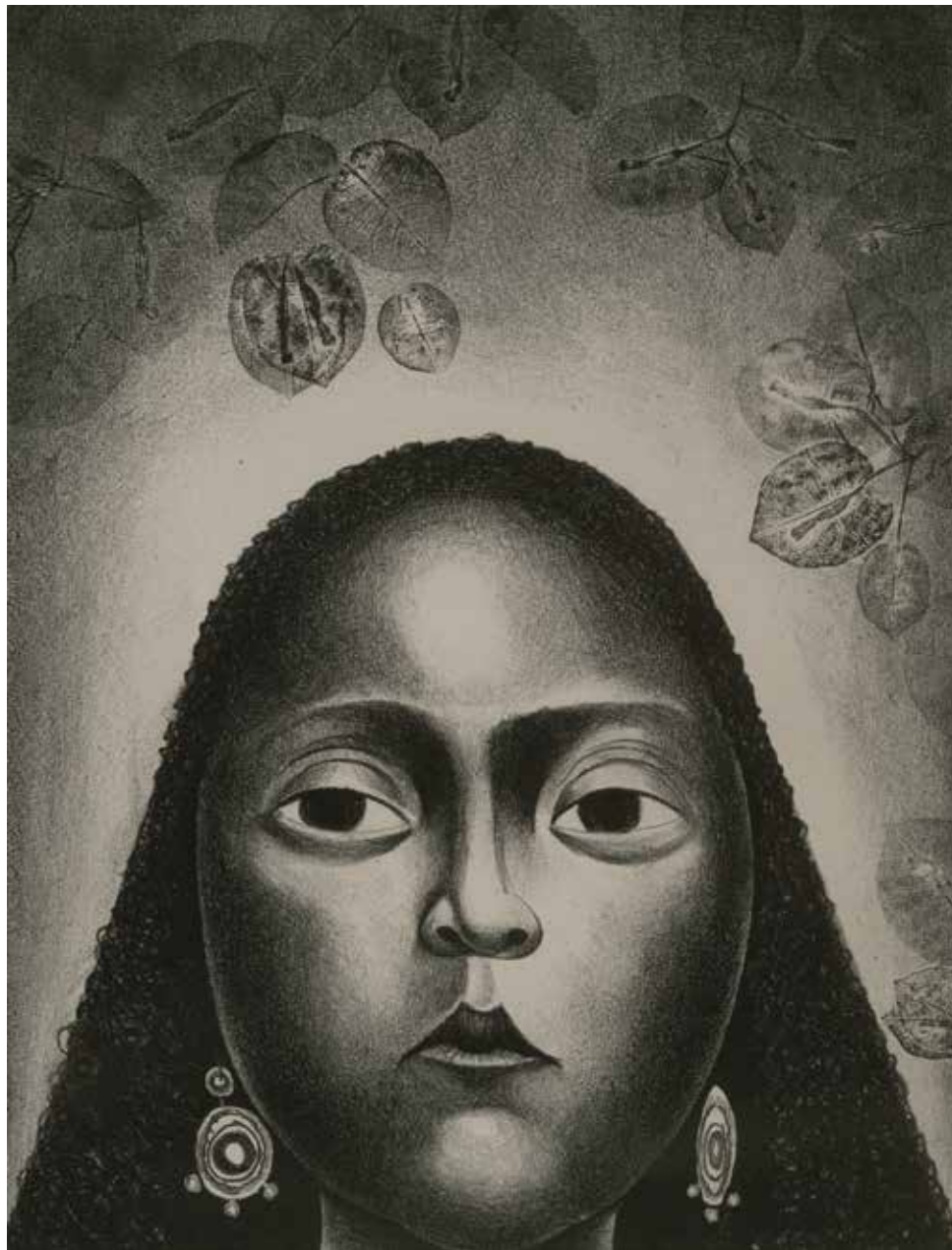
AW ARTWORDS

FALL 2021

**DAVID
OWSLEY
MUSEUM** OF
ART BALL STATE
UNIVERSITY

Vol. 27 No. 1

a newsletter for the Friends of
the David Owsley Museum of Art



IN THIS ISSUE: MEMORIES & INSPIRATION, PROGRAM CALENDAR, INSIGHT: LOANS FROM THE COLLECTION, AND MORE.



ARTWORDS

David Owsley Museum of Art

SERVING EAST CENTRAL INDIANA SINCE 1936

FRIENDS ADVISORY COUNCIL

Mary Foster, *Vice Chair*
Jim Gooden, *Chair*
Sigrid Koehler-Wilkins
Sandra McCallister, *Secretary*
Karen Moorman
Joe Trimmer
Sue Whitaker
Jeanne Zeigler

Ex officio

Seth Beckman, *Dean, College of Fine Arts*
Rachel Buckmaster, *Assistant Director, DOMA*
Jean Gadziola, *President, DOMA Alliance*
Robert G. La France, *Director, DOMA*
Pat Nelson, *Co-President, Muncie Art Students' League*
Annemarie Voss, *Co-President, Muncie Art Students' League*
Deanna Zimmer, *Assistant Director of Leadership Annual Giving, Ball State University Foundation*

COVER ART

Elizabeth Catlett, *Prissy*, 1979, lithograph, Photograph by Gregory Staley.
©2021 Catlett Mora Family Trust/Licensed by VAGA, New York, NY.

ARTWORDS is published biannually by the David Owsley Museum of Art, Ball State University, Muncie, Indiana
© 2021 All rights reserved

MUSEUM STAFF

Robert G. La France, *Director*
Rachel Buckmaster, *Assistant Director*
Denise Mahoney, *Registrar & Collection Manager*
Noelle Giuffrida, *Assistant Curator of Asian Art*
Randy Salway, *Exhibition Designer & Preparator*
Cathy Bretz, *Education Coordinator*

WRITERS

Robert G. La France (RGL)
Denise Mahoney (DM)

DESIGN

Aubrey Smith Creative



LETTER FROM THE DIRECTOR

We begin the academic year, yet again, wearing face masks in the museum. In addition to ongoing concerns about the pandemic, we also face a history of racial inequalities, continuing economic challenges, and political divides. As America struggles to become a more just society, museums must be leaders of change. Normalizing the inclusion of historically marginalized voices into the galleries is part of that change.

You will see more images of, and art by, people of color and women in the galleries as we work to build a more inclusive museum. For example, despite limited budgets and the pandemic, in 2020 the museum only purchased works of art by Black artists, including a significant sculpture by Richard Hunt and a flag painting by June Edmonds. These are displayed alongside many other recently acquired paintings and sculptures by and of women, such as Antoinette BÉfort, Constance-Marie Charpentier, Mainie Jellett, Lee Krasner, and Dorothy Dehner, to name only a few.

In addition, this fall DOMA hosts the exhibition *Memories & Inspiration: The Kerry and C. Betty Davis Collection of African American Art*, which showcases works in a variety of styles by more than 50 Black artists. This show is paired with a companion exhibition of prints and paintings by many of the same artists also represented in DOMA's collection. Finally, after more fully assessing the effect of the pandemic on the museum's programming this fall, DOMA looks forward to bringing back your preferred events accompanied by fresh and diverse programs.

Wearing a mask indoors as we return to campus is just one way to show that you care about those around you. Another way is to tell us how you think the museum can serve the public even better. Simply send an email to artmuseum@bsu.edu or leave a comment at the front desk. We are listening!

Robert G. La France

▼ **Romare Bearden**, *Record Date*, 1979, monotype, Photograph by Gregory Staley.
© 2021 Romare Bearden Foundation/Licensed by VAGA, New York,



▼ **Sam Gilliam**, *Untitled*, 1974, oil acrylic on rice paper. Photograph by Gregory Staley. Courtesy of David Kordansky Gallery, Los Angeles, CA.



▲ **Sedrick Huckaby**, *She Wore Her Family's Quilt*, 2015, oil on canvas. The Kerry and C. Betty Davis Collection of African American Art. Photograph by Gregory Staley.



▲ **Jacob Lawrence**, *Builder Series #8*, 1981, graphite. Photograph by Gregory Staley.
© 2021 The Jacob and Gwendolyn Knight Lawrence Foundation, Seattle / Artists Rights Society (ARS), New York.



▲ **Larry Walker**, *Postman*, 2013, assemblage. Photograph by Reis Birdwhistell.
© 2021 Larry Walker.



sep 23 - dec 22
EXHIBITION

MEMORIES & INSPIRATION:

THE KERRY AND C. BETTY DAVIS COLLECTION OF AFRICAN AMERICAN ART

MUSEUM HOURS: TUESDAY-FRIDAY, 9 AM - 4:30 PM; SATURDAY, 1:30 - 4:30 PM; CLOSED SUNDAYS, MONDAYS, AND HOLIDAY BREAKS.

This traveling exhibition, organized by International Arts and Artists (IA&A) and supported by Arts Alive funding from the College of Fine Arts at Ball State University, presents more than sixty selected works from a body of art amassed over thirty-five years. Kerry, a retired mailman, and Betty, a former television news producer, have foregone many comforts to live with drawings, paintings, prints, and sculpture as their principal luxuries. Their collection includes works by Romare Bearden, Elizabeth Catlett, Sam Gilliam, Lois Mailou Jones, Jacob Lawrence, Gordon Parks, Alma Thomas, and Larry Walker, but Kerry and Betty do not search exclusively for well-known and/or documented artists. Rather, they focus on “the importance of gathering and preserving a spectrum of approaches to the black image in order to console the psyche and contribute to a more authentic articulation of the self.”

The result is an eclectic gathering of works crossing different mediums, subjects, and styles by a group of artists of the African diaspora who—in terms of training, experience, and expression—are strikingly diverse but unified in their use of cultural and historical narratives. As their collection has grown, so has the Davises’ storehouse of memories of discovering new works of art, building friendships with artists, and conversing with museum professionals and other collectors in their home. They have also continued to expose their collection to family, friends, and church members who, while receptive to the fine arts, are unlikely to visit local institutions such as the High Museum of Art in Atlanta—prompting the artist Leon

Nathaniel Hicks to refer to their residence as “a museum in a home.” *Memories & Inspiration* brings together an awe-inspiring selection of works, but it is their personal resonance—their connection to the Davises’ hopes, passions, and everyday lives—that gives the collection its unique power.

At the David Owsley Museum of Art, *Memories & Inspiration* will be accompanied by an exhibition of works exploring the museum’s past, present, and future of collecting art by African American sculptors, printmakers, and painters. The display will feature several works acquired in the decades since Ball State’s exhibition *Focus on Black Culture* in 1969 and *Seen Unseen: The Black Image in American Art* in 2010, including paintings and prints by John Wesley Hardrick, Elizabeth Catlett, Richard Mayhew, and Martin Puryear. These are joined by newer acquisitions of works by Sedrick Huckaby, Dox Thrash, and Charles White. DOMA’s exhibition will also offer the opportunity to celebrate the purchase of a major sculpture, *Daphne’s Defense*, by Chicago sculptor Richard Hunt and the acquisition of an archive of nearly 1,000 works on paper by Joseph Delaney.

As a world art museum, DOMA is inclusive by nature. DOMA’s present and future embraces the intentional, systematic acquisition and display of works of art by African Americans and artists of the African diaspora.

-IA&A and RGL

FALL 2021 PROGRAM CALENDAR

SEP

MEMORIES & INSPIRATION
Thursday

23

Exhibition opens to the public.
Visit bsu.edu/doma/exhibitions for information.

SEP

FAMILY WEEKEND
Saturday, 1:30-4:30

25

Students and their families are invited to explore works in DOMA's permanent collection as well as those in the *Memories & Inspiration* exhibition.

Museum open to the public

SEP

EDUCATOR EXHIBITION OVERVIEW
Thursday, 4 pm

30

Meet Dr. Robert La France, museum director, to learn about educational opportunities associated with the new exhibition.

Visit bsu.edu/doma/events for information and to register.

OCT

EXTENDED HOURS
Friday, 5 - 8 pm

01

DOMA will be open until 8 pm for extended community hours.

OCT

DOCENT'S CHOICE TOUR
Saturday, 2:30 pm

02

View selected works by African American artists.

SCHEDULED HOLIDAY CLOSINGS

Fall Break: **October 9-12**

Thanksgiving Break: **November 24-28**

Winter Break: **December 23-January 2**

OCT

ALLIANCE AND ART LEAGUE PROGRAM*
Wednesday, 12 noon

13

Dr. Robert G. La France, director of the David Owsley Museum of Art, will share recent museum updates including an overview of new acquisitions and the *Memories & Inspiration* exhibition.

Register at bsu.edu/doma/alliance by October 8.

OCT

EXPRESS TALK: IN HOMAGE: PEOPLE & PLACES
Wednesday, 12 noon

20

Denise Mahoney, registrar and collection manager, will give a brief talk on how artists honor connections to locations and individuals, focusing on objects in DOMA's collection by Ron Adams, Joseph Yoakum, and others.

NOV

ALLIANCE PROGRAM*
Wednesday, 12 noon

03

Meet Dr. Rebecca Harvey, the new director of the School of Art.

Register at bsu.edu/doma/alliance by October 29.

NOV

DOCENT'S CHOICE TOUR
Saturday, 2:30 pm

06

View selected works by African American artists.

DEC

DOCENT'S CHOICE TOUR
Saturday, 2:30 pm

04

View selected works by African American artists.

DEC

HOLIDAY COMMUNITY OPEN HOUSE
Saturday, 6 - 9 pm

04

DOMA joins in the annual community holiday festivities with refreshments, children's art activities, and live holiday music. Follow the pathway to the Glick Center for Glass and Rinard Greenhouse Holiday in Bloom from 6 - 9 pm or visit the Brown Planetarium for a program at 3:30, 5 pm, or 6:30 pm for more Ball State Cultural Corridor fun.

In collaboration with the David Owsley Museum of Art Alliance

DEC

ALLIANCE PROGRAM*
Wednesday, 12 noon

08

Meet DOMA's new curator of education.

Register at bsu.edu/doma/alliance by December 3.

Guided group tours available upon request on a case-by-case basis. Contact Cathy Bretz, education coordinator, cabretz@bsu.edu for more information.

JOIN THE FRIENDS OF DOMA

with a minimum contribution of \$25 at bsu.edu/DOMA/friends, or call 765-285-5242 for more information.

***JOIN THE DOMA ALLIANCE**

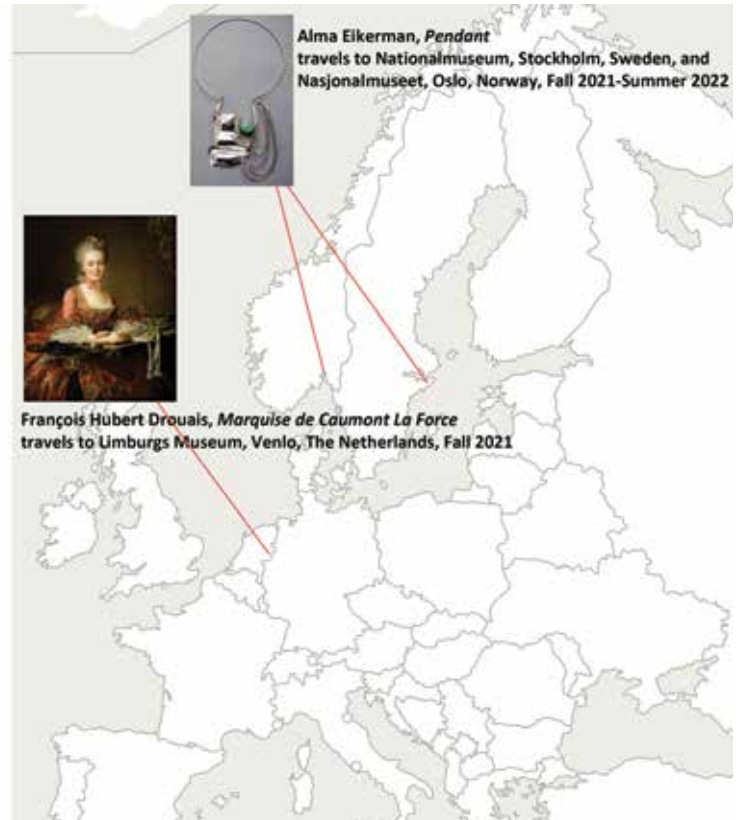
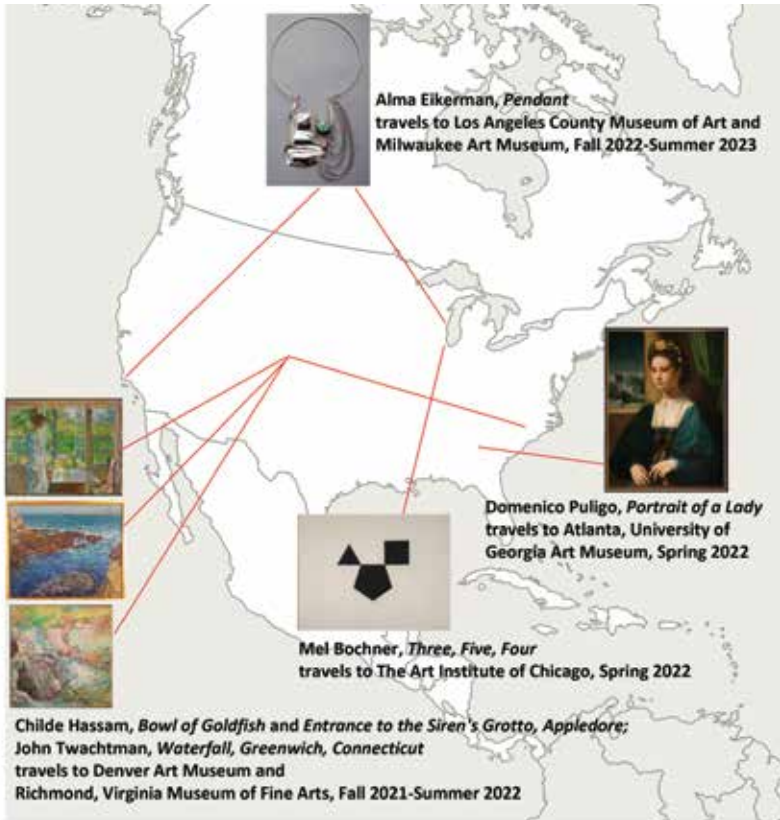
with a minimum annual contribution of \$50. Larger donations are encouraged to support exhibitions, acquisitions, and conservation at the museum. If you wish to attend an Alliance meeting, call 765-285-5242 or register online at bsu.edu/doma/alliance.

ACCESSIBILITY ACCOMODATIONS

Visitors requiring accessibility accommodations should contact the David Owsley Museum of Art at least two weeks before the program whenever possible.

All programs are free unless otherwise noted.

Programs, correct at press time, are subject to change without notice. Museum public hours are contingent upon university guidelines. Check bsu.edu/doma or contact us at 765-285-5242 to confirm programs and locations, and watch bsu.edu/coronavirus for visitor updates.



THE COLLECTION ON TOUR

As we cautiously emerge from the COVID-related lockdown eager for travel, museum exhibitions are reappearing as well. The permanent collection of the David Owsley Museum of Art contains many objects, whether in the galleries or in storage, that are considered key pieces for shows and thus requested for loan.

Loan requests to DOMA, typically received at least a year prior to the opening date of the exhibition, are carefully reviewed, taking into consideration the condition of the object and its suitability for travel, the timing of the show, and the scholarly nature of the endeavor. Advantages to having objects out on loan include having other curators examine and research them with fresh eyes and new ideas, publishing such findings, as well as sharing our amazing collection with a wider audience.

If a request has passed all hurdles and been approved, the lengthy logistics planning process then kicks in. While the borrowing institution pays for all costs, DOMA's registrar arranges for a crate (if one does not exist), any needed conservation work, new photography, and, working with the borrowing institution, approves all transit arrangements, which fall under strict guidelines for security and environmental stability. Often an exhibition will have several venues and each leg goes through the same careful review. On some occasions DOMA may be required to send a courier for transit and installation.

DOMA has a number of upcoming loans, including some previously postponed due to the pandemic. While you may miss a favorite object in the galleries while it is traveling, rest assured it is well taken care of and may have a new story to tell upon its return. **-DM**

FALL 2021

Vol. 27 | No. 1

Museum Hours

Tuesday - Friday: 9:00 a.m.-4:30 p.m.

Saturday: 1:30 p.m.-4:30 p.m.

Closed Sundays and Mondays

FREE ADMISSION

2021 W. Riverside Avenue

Muncie, IN 47306

bsu.edu/doma

765-285-5242

Follow DOMA on social media



New to the Galleries

DAPHNE'S DEFENSE

Hunt's hybrid mineral and biological forms often explore bronze's mythological and material attributes as well as its inherent transformative possibilities.

In Greco-Roman mythology, the nymph Daphne transforms into a tree to escape her attacker. In the context of the sculpture's creation in 2020, the myth functions as a metaphor for vaccination and the protection it provides from COVID-19.

Installed in the middle of DOMA's Sculpture Court, the placement celebrates one of Chicago's most legendary artists while both literally and figuratively centering Hunt's sculpture and identity in the museum's collection.



▲ **Richard Hunt**, American (born 1935)
Daphne's Defense, 2020, bronze, 1/3
Purchase: Museum of Art Alliance and Ball Brothers
Legacy Endowment, 2020.018.000 © Richard Hunt

-RGL