

Visiting Artists _Designers & Scholars _Lecture Series



October 01

Kent Ambler - Printmaker

Kent Ambler is a full-time artist based in Greenville, South Carolina. He is well-known for his large scale woodcuts, paintings and assemblages. Drawing is vital to Kent's Studio practice and he draws inspiration from nature and his surroundings. He has been featured in the *Wall Street Journal* as an important contributor to the Greenville art scene. Kent has work in many private and public collections. **5 - 6 P.M. - AJ 225.**

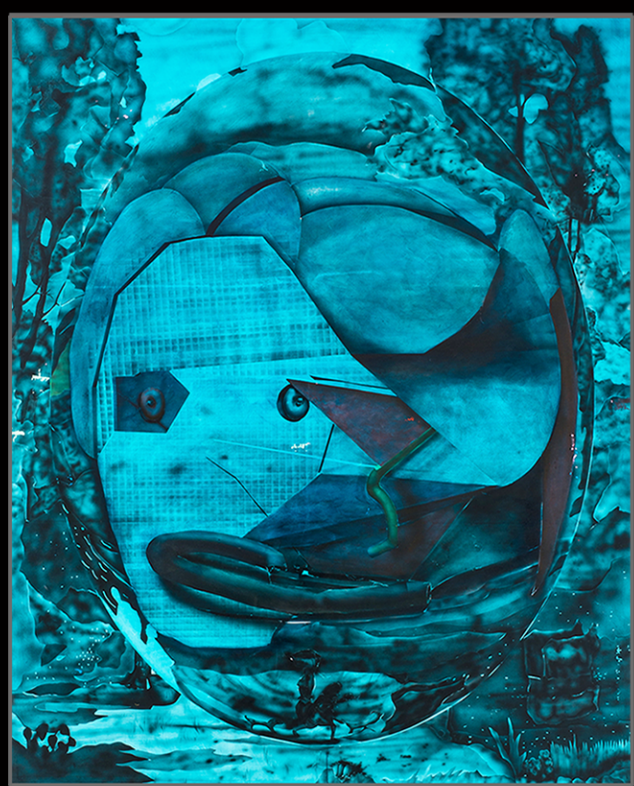


November 14

Sydney Jane Brooke
Campbell Maybrier
Pursel -
Interdisciplinary Artist/
Sarah Trad - Video Artist

Pursel is an interdisciplinary artist specializing in interactive, socially engaged, and performance arts. Through art she explores personal identity drawing from her Indigenous and Irish Catholic roots. Sydney received her MFA in Expanded Media at the University of Kansas and her BFA in Painting from the University of Missouri. She was the first recipient of the Ucross Fellowship for Native American Visual Artists Foundation. Sydney is an enrolled member of the Ioway Tribe of Kansas and Nebraska.

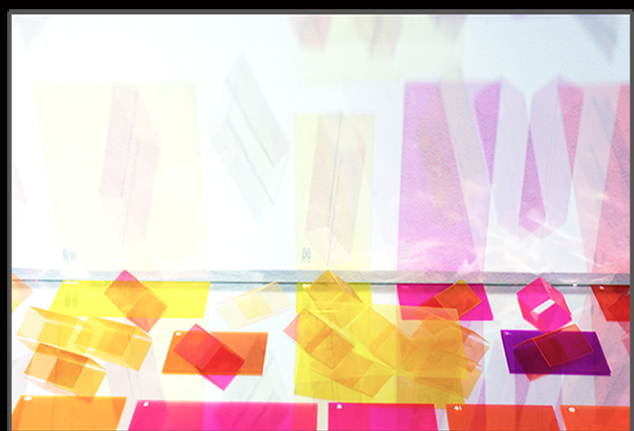
Sarah Trad is a video artist and curator who explores the relationship between subjective and objective emotionality, navigating daily life and relationships while faced with mental illness and breaking down stereotypes of gender and narrative. Her work also highlights how mental illness and coming from marginalized backgrounds intersects with internal emotional worlds. She is currently a part of the Philadelphia artist-run gallery, Little Berlin. **6 - 8 P.M., AJ 175.**



October 15

Lee Piechocki - Painter

Lee Piechocki is a 2005 Ball State University BFA painting alumni and is currently a painting assistant at Mark Grotjahn studios in Los Angeles. Lee describes his work as "a mix of fact and fiction, confession and deception, observation and invention." Lee has exhibited his work in numerous national and regional venues. He has had his work featured twice in *New American Painting*, and he has been active as an art curator and writer in Kansas City and Chicago. **5 - 6 P.M. - AJ 225.**



January 09

Bennie Flores Ansell -
Photo-Based
Installation Artist

Bennie Ansell is a photo-based installation artist living in Houston, Texas. She was born in Manila, Philippines and lived her formative years in the US. Her work has been exhibited at the International Center for Photography, NYC; Seattle Art Museum and the San Diego Museum of Art. Her visit is in conjunction with the Atrium Gallery exhibition, *Light Migrations*, in which she represents migration patterns and swarms created from deconstructed slide film. She installs hand cut film sprockets onto the wall in patterns mimicking murmurations of birds in flight and the immigration patterns of people around the world. She uses other artifacts of film photography, projecting light through variable contrast filters. **Greiner Gallery 5:00P.M.**



October 24

Kensuke Yamada -
Sculptor

Kensuke Yamada was born in Kamakura, Kanagawa, Japan. He received his MFA from the University of Montana in 2009 and has a BA from Evergreen State College in Olympia, Washington. Kensuke has participated in artist residency programs at the Archie Bray Foundation, The Clay Studio Philadelphia, Tyler School of Art, and Cheekwood. He is currently teaching at the University of Arkansas at Little Rock. **5 - 6 P.M. - AJ 225.**



February 11

Nash Quinn - Metal Artist

Nash Quinn creates sculptural work that crosses boundaries between ideas, formats, and techniques, with metalsmithing as the thread that runs throughout the work. He will be lecturing about his current work and demonstrating the esoteric process of chasing and repousse'. **5 - 6 P.M. - AJ 225.**



April 02

Tad Carpenter -
Graphic Design

Tad Carpenter is a designer, illustrator, author and teacher based in Kansas City, Missouri. Tad has illustrated over twenty children's books, as well as designing over 200 gig posters for musicians, bands and tours. Since 2009, Tad has also been teaching Graphic Design at his alma mater, The University of Kansas and was named a Graphic Designer to watch by GDUSA in 2017. **5 - 6 P.M. - AJ 225.**



September 03

Erica Tada - Glass

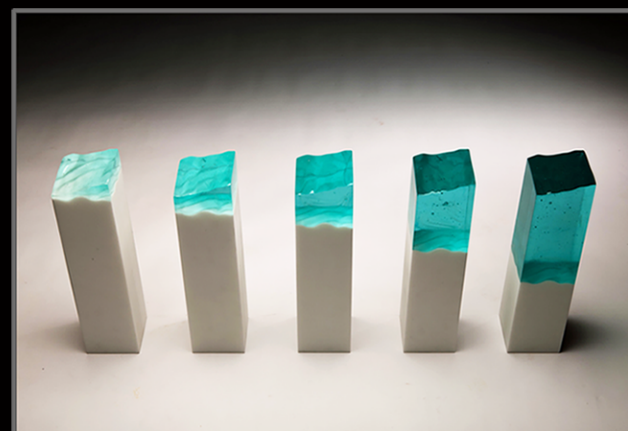
Erika Tada graduated with an MFA from Rochester Institute of Technology in 2005, and a PhD. from Tokyo University of the Arts in 2012, where she currently teaches. Her poetic artwork cherishes her personal experiences and the feelings associated with them through the use of objects that play key roles in commemorating her memories. Her focus is on the techniques of pâte de verre and glass casting. **5 - 6 P.M. - AJ 225.**



October 29

Dana Harper - Sculptor

Harper holds a BFA from Ohio State University in 2009. She was the recipient of The Bunton Waller Fellowship from Penn State University, where Harper received her MFA in 2013. Harper was awarded an Art Prize Seed Grant, Art File Emerging Artist Grant and a Ringholz Foundation Award. She has also been an artist in residence at Sculpture Space, Teton Art Lab, ArtSpace Raleigh, ARC Chattanooga, Kutztown University, Bunker Projects and Second Sight Studio. Currently, Harper lives and works in Columbus, OH. **6 - 7 P.M. AJ 225.**



February 20

Davin Ebanks - Glass

Davin Ebanks is a Caymanian sculptor who primarily utilizes glass to explore his personal and cultural history, and examine the relationship between identity and environment. In 2016, he received the Silver Heritage Star from the Cayman National Cultural Foundation for creativity in the Arts. In 2018 his work was featured in the prestigious SculptureX exhibit at Bowling Green State University in Ohio. Included in his wide-ranging exhibition record, Davin has shown at SOFA Chicago and CONTEXT Art Miami during Art Basel week. He is currently Assistant Professor (Head) of the Glass Program at Kent State University in Kent, Ohio, USA. **5 - 6 P.M. - AJ 225.**



September 19

Maria Tomasula - Painter

Maria Tomasula is the Michael P. Grace Professor of Art at the University of Notre Dame. Her work is influenced by the votive painting of Mexico as well as contemporary writers of Latin America. Her photo-realistic paintings touch on subjects like religion, life and death, and the beauty of nature. Using realistic still-life techniques, she creates images that employ religious symbolism and allegory.

5 - 6 P.M. - AJ 225.



November 07

Jeff Gomez -
Transmedia Producer

Jeff Gomez, CEO of Starlight Runner, is a leading expert in the fields of brand narrative, storyworld development, creative franchise design, and transmedia storytelling. He specializes in the expansion of entertainment properties, premium brands, and socio-political themes into highly successful multi-platform communications and international campaigns. Jeff also develops the storyworlds of films, TV shows, videogames, toys, books, comics, apps, immersive entertainment projects, and theme park attractions. His pop culture work has impacted such blockbuster properties as *Pirates of the Caribbean*, *Avatar*, *Transformers*, *Spider-Man*, *Halo*, *Teenage Mutant Ninja Turtles*, and the global multi-platform revival of Tsuburaya Productions' *Ultraman*. **5 - 6 P.M. - TC 121.**



March 12

Walter Kitundu - Kinetic
Sculpture and Sonic
Installations

Kitundu creates kinetic sculptures and sonic installations, develops public works, builds (and performs on) extraordinary musical instruments, while studying and documenting the natural world. He is the inventor of a family of Phonoharps, multi-stringed instruments made from record players that rely on the turntable's sensitivity to vibration. Kitundu has created hand built record players driven by the wind and rain, fire and earthquakes, birds, light and the force of ocean waves. In 2008 he received a prestigious MacArthur Fellowship in recognition of his work and creative potential. **5 - 6 P.M. - AJ 225.**

