

SR 129 Rehabilitation
INDOT Project #STP-3378 (), Des #9502690
Switzerland County, Indiana

Archaeological Testing of Site 12Sw339

Prepared for:

Indiana Department of Transportation
100 N. Senate Ave., Room N 808
Indianapolis, Indiana 46204-2249

Prepared by:

Blake Cochran
R. Ezra Erb
Beth McCord
Kimberly Nagle
Kim Zunker

Donald R. Cochran and Beth McCord
Principal Investigators

January 18, 2002

ARMS Project #00IA001

Archaeological Resources Management Services
Ball State University, Muncie, IN 47306-0435
Phone: 765-285-5328 Fax: 765-285-2163
Web Address: <http://www.bsu.edu/csh/anthro/ARMSpage.htm>
E-Mail Address: Arms@bsuvc.bsu.edu

12-Sw-339
Table of Contents

	Page
Table of Contents	i
List of Figures	ii
List of Tables	ii
Abstract	1
Introduction	1
Environmental Setting	1
Switzerland County	4
12Sw339 Historical Document Research	4
Archaeological Investigation	5
Methodology	5
Results	6
Features	6
Historic Artifacts	10
Kitchen Group	10
Architecture Group	12
Furniture Group	12
Arms Group	12
Clothing Group	13
Personal Group	13
Tobacco Group	13
Bone Group	13
Activities Group	14
Miscellaneous Group	14
Mean Ceramic Dating	15
Artifact Patterning	16
Conclusions	22
Prehistoric Artifacts	22
Stratigraphy	22
Conclusions and Recommendations	26
References Cited	28
Appendix 1: Artifacts by Unit and Level	31
Appendix 2: Artifact Photographs	51
Appendix 3: Artifact Groupings by Level	61

List of Figures

Figure	Page
1. Location of site 12Sw339	2
2. Map of site 12Sw339 showing locations of units and features	3
3. Map of Feature 1	8
4. Map of Feature 3	9
5. Stratigraphic profile of Unit 1	23
6. Stratigraphic profile of Unit 2	24
7. Stratigraphic profile of Unit 3	25
8. Stratigraphic profile of Unit 4	27

List of Tables

Table	Page
1. Mean Ceramic Dates	15
2. Comparison of the Hall Site to South's artifact patterns	16
3. Comparison of the Hall Site to Ball's artifact patterns	17
4. Unit 1 Artifact Groups	18
5. Unit 2 Artifact Groups	19
6. Unit 3 Artifact Groups	20
7. Unit 4 Artifact Groups	21

Abstract

Site 12Sw339 is a multicomponent historic and prehistoric site located on a section of Illinoian till plain south of Moorefield, Switzerland county, Indiana. Archaeological testing revealed that the main occupation was mid 19th century to early 20th century, with a minor prehistoric occupation. A total of three historic cultural features were identified at the site. These include a limestone well, a coal concentration/stain, and a brick and limestone house foundation. No prehistoric features were found. The prehistoric assemblage seems to represent a short term occupation. No further work was recommended for the site.

Introduction

In response to a request from the Indiana Department of Transportation, archaeological testing of site 12Sw339 has been completed for the proposed SR129 pavement repair and rehabilitation, Switzerland County, Indiana, Project STP-3378(). This site is located [REDACTED]

Testing of site 12Sw339 was recommended based on the results of a field reconnaissance (Angst 1998). Surface visibility during the field reconnaissance was enough to observe artifacts on the surface, and the area was investigated with shovel test probes. The artifacts recovered indicated a middle 19th to early 20th century occupation, and an isolated prehistoric artifact was also present (Angst 1998:89-91). Three features were evident on the surface, a house foundation, a covered well/cistern, and a coal scatter. Based on the potential for this site to offer information on regional rural sites from the 1800s, archaeological testing was recommended.

The following report documents the testing results of 12Sw339. The testing also documented a prehistoric component which was slightly more extensive than that identified by the field reconnaissance. Since the historic component is more extensive than the prehistoric component, the historic component will be discussed first, followed by the prehistoric component.

Environmental Setting

The project area is situated in the Dearborn Upland physiographic unit, an area characterized by a dissected plateau north and west of the Ohio River (Schneider 1966:42). The surface deposits in the area are within the Butlerville Till Member of the Jessup formation (Wayne 1966:26). The project is located in the Illinoian till plain environmental zone (Gray 1972).

One soil was identified at 12Sw339, the Cincinnati silt loam, eroded. This soil is classified within the Cincinnati-Weisburg-Bonnell soil association. Two slope classes were evident at this site, 2-6%, and 6-12%, both eroded. Both of these soils are suited to hay and pasture, and to a lesser degree, cultivated crops and woodlots (Nickell 1987:19).

The presettlement vegetation of the area was beech maple and western mesophytic forest

**Site Location Confidential
Not for Public Disclosure**

Figure 1. Portion of the USGS 7.5' Bennington, Indiana Quadrangle showing location of site 12Sw339.

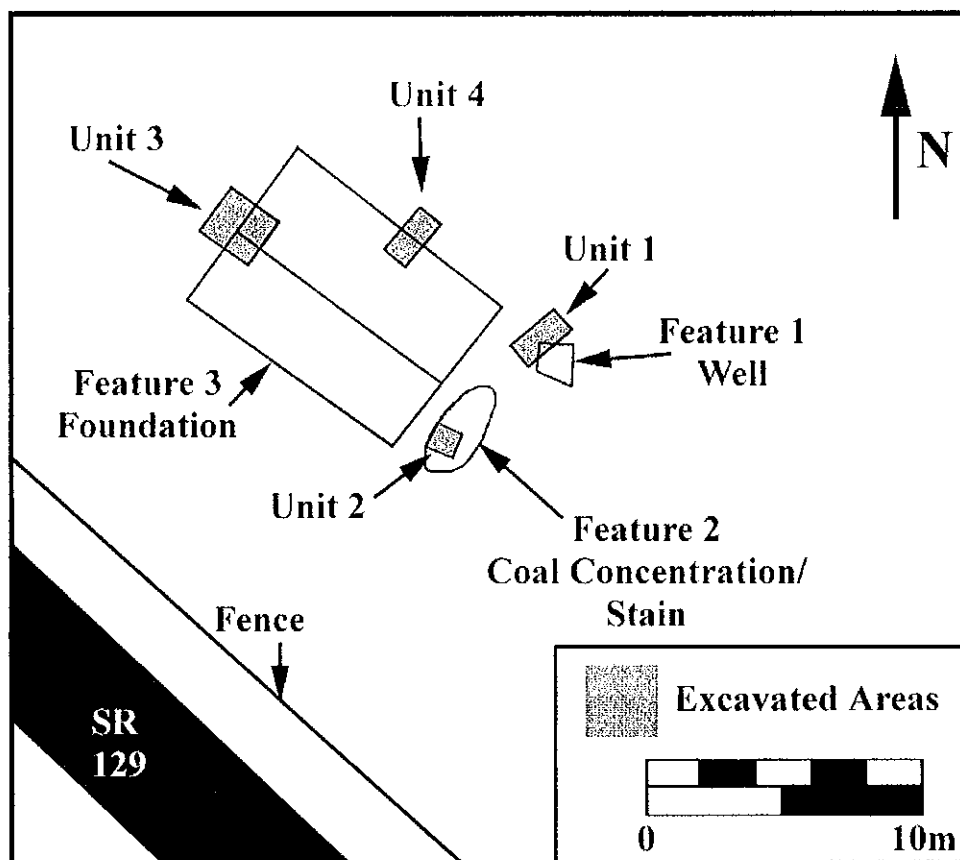


Figure 2. Map of site 12Sw339 showing locations of units and features.

(Petty and Jackson 1966:280).

Switzerland County

Historically, Switzerland County was first intensively settled by Euroamericans after the signing of the Greenville Treaty in 1795. However, there are records of non-Native Americans in the region prior to that date. (Anonymous 1980:6). During the early 1800s many emigrants from Switzerland arrived (Anonymous 1885: 1992), establishing the first political organization in the county (Anonymous 1980:6). The county was first recognized in 1814 by the Indiana Territory Legislature (Anonymous 1980:6). Scottish settlers also moved into the area during the early nineteenth-century (Anonymous 1980:6). While agriculture dominated the landscape, during the nineteenth-century small scale industrial manufacturing also began to prosper, thanks largely to the county's proximity to the Ohio River (Anonymous 1980:6). However, as the older soils began to deplete, and Louisville and Cincinnati became large industrial centers, Switzerland County became primarily a rural area focused on dairy farming and has remained so to this day (Anonymous 1980:6).

12Sw339 Historical Document Research

The record of ownership for 12Sw339 is less complete than might be hoped. The available pertinent records were examined by R. Ezra Erb at the Switzerland County Courthouse in an attempt to identify likely time periods in which the structure identified at 12Sw339 was built. The results are summarized below.

The earliest two individuals listed as owning property near 12Sw339 were William Culbertson and Walter Scott. On May 13, 1867 William Culbertson sold his 9 acres of land in this area to James Stewart for \$900 (Deed Record Z: 58). James Stewart sold 14.129 acres of land to William Culbertson for \$1400 on May 13, 1867, the same day that it was sold to Mr. Stewart. From the description of the land, it seems that Mr. Culbertson purchased back the same 9 acres he sold to Mr. Stewart that day (Deed Record Y: 616). Mr. Culbertson had earlier purchased 30 acres of land for \$2500 from Walter Scott on March 12, 1867 (Deed Record Y: 537). At the end of 1867, then, Mr. Culbertson owned better than 44 acres of land near 12Sw339.

The 1860 Census reveals some information about these three earliest recorded title holders. In 1867, James Stewart, a farmer from New York with at least two children, was 45. Walter Scott, a farmer from Scotland with at least one child, was 77. William Culbertson of Indiana was 40 at the time of his purchases, and had at least two children. He was listed as a master blacksmith, and had an apprentice in his household in 1860. At the time of his selling the land, he was 76. No mention was made of a house or any other structure on this property at this time, but the structure identified during investigations at 12Sw339 was likely extant by 1867, as was another structure seen on the 1888 Atlas (Griffing 1888).

Interestingly, this atlas lists the land under the name of Jacob J. Richter, and the total area as 47 acres. While the acreage is close to the amount mentioned in the deeds, the research which

is reported here did not reveal a Richter associated with the property. William Culbertson, Jr. is listed as owning land north of the property which contains 12Sw339, but this contains at most 10 or so acres. The answer to this riddle of Richter's name appearing on the 1888 map is unclear. It is possible that he held a lease for the land or had earlier purchased some of it from Culbertson, but this is purely conjectural.

Deed records unequivocally state, however, that William Culbertson sold 6.5 acres of land to Harvey Jester for \$500 on March 2, 1903 (Deed Record #21: 218). It is unclear who owned the balance of the land at this time. Jester added 2 acres from Jeff Smith sometime between 1903 and 1946. Jester sold the land on March 20, 1946 to George Vivian Tevis of Madison, Indiana for an undisclosed amount (Deed Record #36: 139). Transfer Records indicate that earlier under Jester's ownership there was an improvement on the land worth \$250. This improvement had disappeared by 1946.

13.29 further acres of nearby land were added to these 6.5 acres by George Tevis on November 12, 1946 for an undisclosed sum paid to Norval R. Brown (Deed Record #37: 159). Mr. Brown had earlier purchased this property from Walter C. Farrell on November 23, 1943 (Deed Record #34: 450), who purchased it from Fannie W. Brooke for \$1800 on February 3, 1919 (Deed Record #29: 30). Ms. Brooke was a resident of Los Angeles County, California at the time of this sale. These 13.29 acres contained improvements worth \$300 before 1943. These improvements may have included the 12Sw339 structure, but this is not certain. It is clear from the Transfer Records that no improvements were recorded anywhere on these 20 acres after the 1940s. The 12Sw339 structure was most likely gone by this time.

In 1946, George V. Tevis possessed almost 20 acres of land located on the east side of modern SR 129, and this ownership was confirmed by deed after the death of his wife, Mary E. Cull (Deed Record #89: 317). This land corresponds to part of the land earlier owned by William Culbertson, and listed on the 1888 Atlas under the name of J. J. Richter. The exact details of how this land was directly or indirectly conveyed from Culbertson to Brooke are unclear, as is the chain of ownership for all of this land save the Culbertson-to-Brown portion. It is possible that Richter did own part of this land at one time, leased it, or that the 1888 Atlas is incorrect.

The land owned by George Tevis was the object of a contested will after his death. In the end, his brother Robert Leon Tevis received most of the land, including the part containing 12Sw339 (Deed Records #92: 239-240). Robert Tevis is the current owner of this property.

Though research did not lead to a great deal of new information about 12Sw339, it does suggest a pre-1940s abandonment, demolition, or removal of the structure which was formerly located there.

Archaeological Investigations

Methodology

Archaeological testing was conducted between 26 and 30 June, 2000, and 17-18 July,

2001, with a total of 7 days of field work. The crew consisted of a maximum of seven people, and included Kari Carmany, Blake Cochran, Ezra Erb, Kim Nagle, Daniel Reid, Dan Seymour, Aimee Smith, Emily Tucker, Mitch Zoll, and Kim Zunker.

Extant features were mapped, described, and photographed. Units were excavated at Feature 1 (well), Feature 2 (coal concentration/stain), and Feature 3 (house). Based on repetitive information obtained from the unit excavation, and after consultation with DHPA (James R. Jones 2001: Personal Communication), backhoe stripping of a 10% sample of the site area was not deemed necessary as originally proposed (Zoll 2000).

Units were excavated in ten centimeter levels. Excavation was ceased when historic artifact levels dropped significantly, or the feature had been adequately documented as to construction, etc. All soil was screened through 6.35mm (1/4 inch) wire mesh. Upon completion of excavation each unit was backfilled.

Soil type, color, and depth were noted for each level using standard soil terminology and Munsell color designations. Standard ARMS level forms were used to document each unit. Units were photographed with black and white prints and color slides. Features were mapped and photographed before and after excavation.

Artifacts were bagged by provenience and each bag was assigned an individual number. All artifacts and samples were taken to the ARMS lab for cleaning, processing, identification, analysis, and cataloguing. Historic artifacts were identified by the author using type collections, antiquebottles.com/coke, antiquebottles.com/dating.html, Brantley (1975), Feldhues (1995), Hinson (2000), Huser (1993), IMACS (1984), Lofstrom et al. (1982), Majewski and O'Brien (1987), Newman (1970), ODOT (1991), and ARMS staff. Historic document research was performed by R. Ezra Erb. Prehistoric materials were identified by the author using Justice (1987), and then were checked by Donald Cochran. Sediments and stratigraphy were identified by Beth McCord. All materials associated with 12Sw339 were accessioned under 01.55.

Results

A total of four units were excavated to depths between 25 and 50cm below ground surface around three features. From these units, a total of 5,000+ artifacts were recovered. These artifacts were predominately historic, and a minority were prehistoric. In the following sections, features will be discussed, artifact classification and analyses will be presented, and stratigraphy defined.

Features

Three cultural features were identified at this site. The features are a limestone well (Feature 1), a coal concentration/stain (Feature 2), and a brick and limestone house foundation (Feature 3).

Feature 1

Limestone well (Figure 3)

Feature 1 is a drylaid limestone well, the opening of which measures approximately 65cm x 65cm, and is open to a depth of 1.3 m. The top of the well has been covered with concrete, and measures approximately 1.4m N-S x 1.55m E-W. The well was filled with refuse at a depth of 1.3 meters.

Unit 1 was excavated across the western edge of the well in order to document construction methods. This unit measured 2m x 2m, and was excavated to a depth of 42cm below ground surface. Artifacts from the Kitchen Group accounted for 94% of the artifacts recovered from Unit 1. Together, the Kitchen Group and the Architectural Group make up 97% of the artifacts recovered from Unit 1. Of the kitchen group, glass accounted for 98% of the total. The high percentage of kitchen debris may be due to disposal of this type of material near the well.

Feature 2

Coal concentration/stain

Feature 2 is a coal concentration of irregular shape. Its maximum dimensions are 2 m E-W x 5 m N-S. This feature probably represents the disposal of burned coal and other material from the house.

Unit 2 was situated on top of this feature in order to determine its nature. This unit measured 1m x 1m and was excavated to a depth of 40cm below ground surface. Artifacts recovered from Miscellaneous Group represent 59% of the artifacts from Unit 2. Architecture Group artifacts represent 29% of the total from this unit, with Kitchen Group artifacts accounting for 5%, Activities Group for 4%, and Bone for 3%. The high percentage of Miscellaneous Group artifacts, which were mostly unidentified metal and heat damaged objects, may represent disposal of burned coal and other items from the house.

Feature 3

Limestone and brick house foundation (Figure 4)

Feature 3 is a dry laid limestone and brick house foundation, measuring approximately 6.5m N-S x 9m E-W. This wall was not more than two courses high. An interior foundation wall was located within the confines of the exterior walls.

Unit 3 was excavated on the west side of this feature, at the junction of the interior foundation and the exterior foundation in order to document construction. This unit measured 2m x 2m, and was excavated to a depth of 57cm below ground surface. The Architectural Group accounted for 63% of the artifacts recovered from Unit 3. Artifacts in the Kitchen and Bone

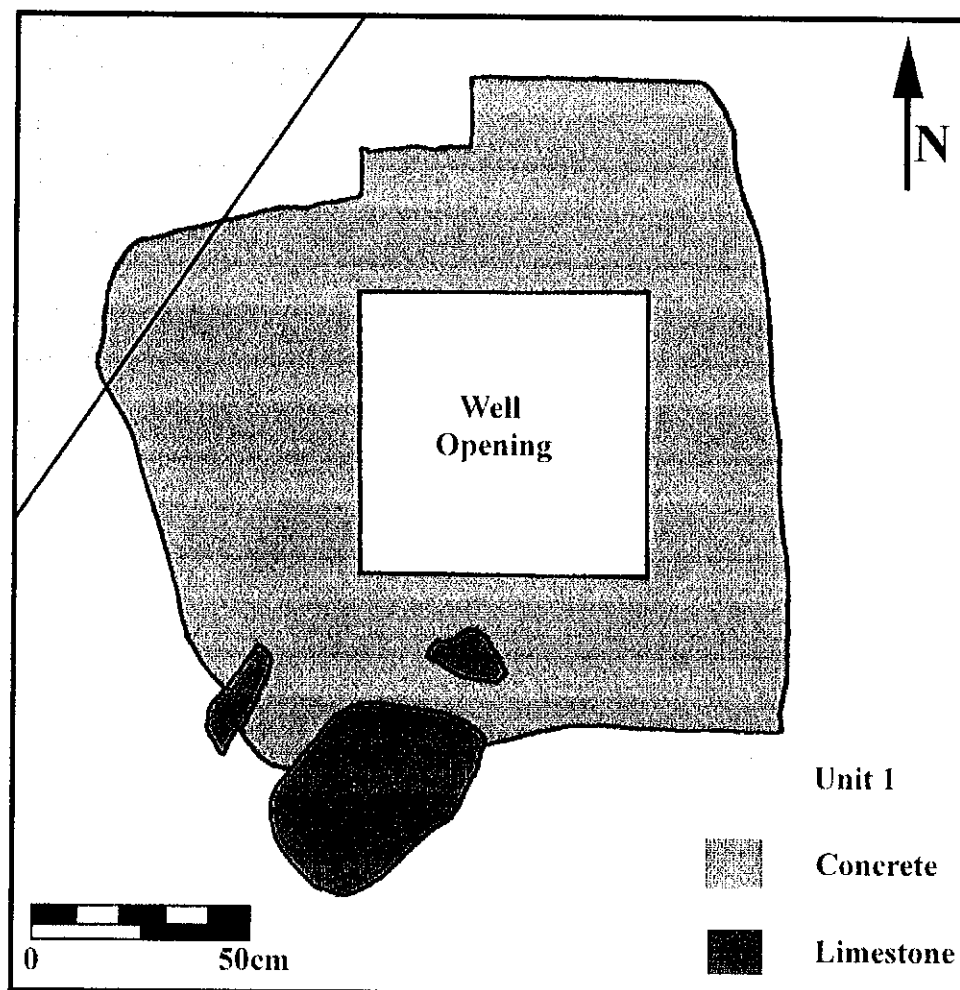


Figure 3. Map of Feature 1 showing concrete, limestone, and location of Unit 1.

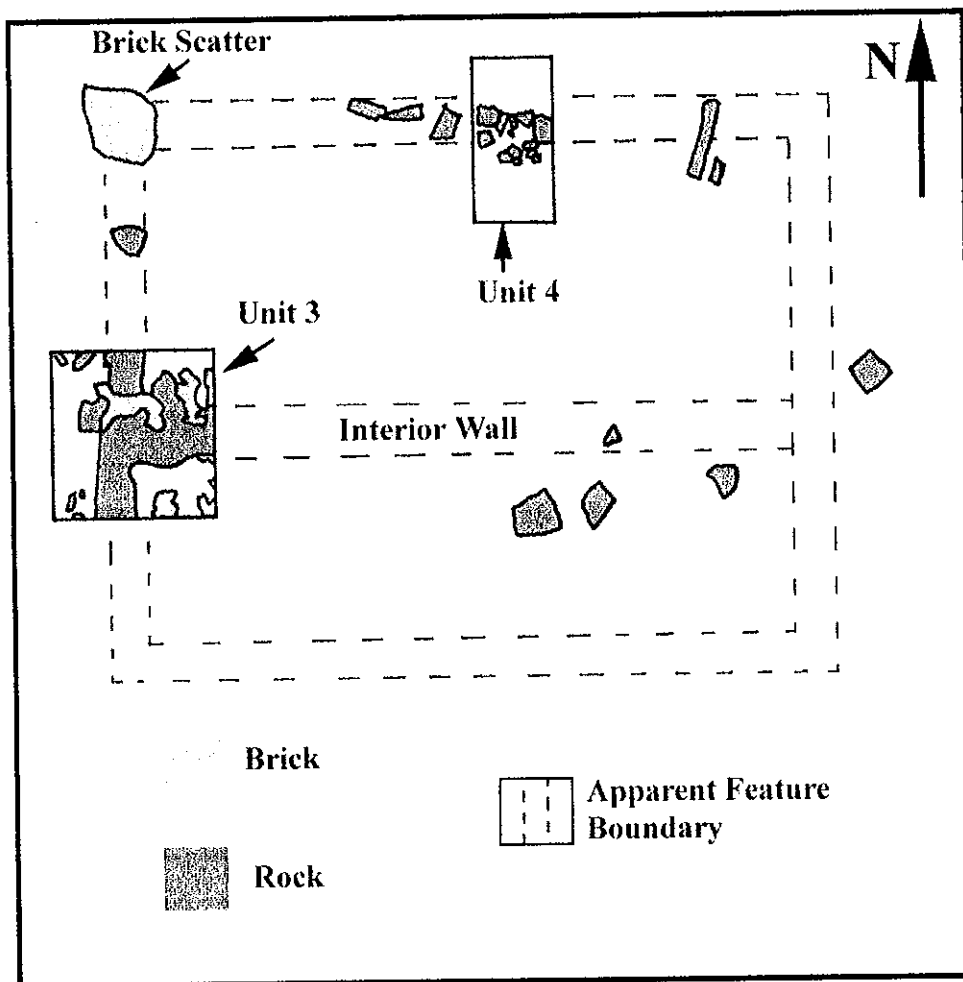


Figure 4. Map of Feature 3 showing locations of units 3 and 4. Scale 1"=approx. 2.25m.

Groups accounted for 32% of the artifacts from Unit 3. The majority of architectural artifacts recovered was flat window glass, which indicates there were probably windows on the side of the house near the unit's location. The kitchen and bone artifacts recovered probably represent disposal of these items near the house.

Unit 4 was excavated across the north foundation wall in order to document construction and determine the use of that portion of the house. This unit measured 1 x 2m, and was excavated to a depth of 36cm below ground surface. Kitchen Group materials accounted for 40% of the artifacts recovered from Unit 4. Artifacts in the Architecture and Activities Groups made up 50% of the artifacts recovered from Unit 4. The large percentage of kitchen artifacts recovered suggests that these items were disposed of nearby the house.

Historic Artifacts

A total of 5889 artifacts were found at 12Sw339. The artifacts are discussed by South's (1977) artifact classes and groups. The kitchen group yielded the highest density of artifacts at the site (50%), followed by the architecture group (26%), activities group (13%), miscellaneous group (8%), bone group (2%), clothing group (<1%), personal group (<1%), arms group (<1%), furniture group (<1%), and tobacco group (0%). The temporal span of dates for manufactured artifacts range in age from the late eighteenth century to the mid twentieth century. Lists of artifacts by unit and level are presented in Appendix 1. Photographs of representative, diagnostic, and unusual artifacts are presented in Appendix 2.

Kitchen Group (N=2934)

A total of 2934 items were classified within the kitchen group. Of this assemblage, metal vessels accounted for 14% (N=413), glass vessels 83% (N=2455), ceramic vessels 1% (N=42), kitchen ware 1% (N=23), utensils <1% (N=1), and no pharmaceuticals were found.

It should be noted here that the majority of the ceramics, glass vessels, and metal vessels were small fragmentary pieces.

Ceramics (N=42)

Creamware (N=1)

A total of 1 undecorated creamware sherd was found.

Ironstone (N=5)

A total of 5 ironstone sherds were found. All pieces were undecorated.

Porcelain (N=1)

A total of 1 porcelain sherd was found. This piece was decorated with a polychrome decal.

Stoneware (N=14)

A total of 14 stoneware sherds were recovered. Salt glazing occurred on 3 of the 14 sherds. Photographs in Appendix 2 more clearly describe the stoneware sherd assemblage.

Whiteware (N=19)

A total of 19 whiteware sherds were found. These include 16 undecorated, 1 hand painted monochrome brown floral, 1 polychrome floral, and 1 red transfer print.

Yellowware (N=1)

A total of 1 undecorated yellowware sherd was recovered.

Glass vessels (N=2455)

A total of 2445 unidentified glass container fragments were found. These include amber (N=35), amethyst (N=18), aqua (N=88), clear (N=2296), green (N=7), and milk (N=1). Of these fragments, 2 were aqua Ball jar fragments, 1 clear Ball jar fragment, 1 aqua Hero jar fragment, 1 clear Anchorglass fragment, and 10 were clear Duraglass jar fragments.

A total of 10 intact glass vessels were recovered. These include clear Ball jars (N=3), clear Duraglass ketchup bottles (N=2), clear Duraglass jars (N=2), and unidentified clear jars and bottles (N=3).

Metal Vessels (N=413)

A total of 413 tin can fragments were found.

Utensils (N=1)

A total of 1 pewter utensil handle fragment was recovered.

Kitchen Ware (N=23)

A total of 23 kitchen ware items were found at the site. These include aluminum foil (N=3), metal handle from sheet metal frying pan (N=1), rubber sealing ring from canning jar (N=4), sardine can type keys (N=3), unidentified metal lid fragments (N=2), unidentified metal lid from glass jar (N=7), and unidentified metal screw on lid (N=3).

Architecture Group (N=1565)

A total of 1565 items were classified within the architectural group. Of this assemblage, nails accounted for 35% (N=551), window glass 34% (N=536), construction materials 30% (N=468), and spikes (N=7) and door parts (N=3) accounted for less than 1% each.

Window glass (N=536)

A total of 536 pieces of flat window glass were recovered from the site. This includes aqua (N=250) and clear (286).

Nails (N=551)

A total of 551 nails were found. These include round aluminum (N=1), round (N=136), round roofing (N=13), square hand forged (N=9), square machine cut (N=256), and unidentified (N=136).

Spikes (N=7)

A total of 7 square machine cut spikes were recovered from the site.

Construction Materials (N=468)

A total of 468 construction materials were found. These include brick fragments (N=7), metal gutter fragments (N=44), mortar (N=16), unidentified linoleum (N=400), and wallpaper (N=1).

Door parts (N=3)

A total of 3 metal hinges were recovered from the site.

Furniture Group (N=2)

A total of 2 furniture items were found at the site. These include a brass foot (N=1), and a copper or brass round headed furniture tack with soldered on shank (N=1).

Arms Group (N=3)

Cartridges (N=3)

A total of 3 cartridges were recovered from the site. These include a caliber .22 short with no maker's mark (N=1), and 12 ga. base from paper bodied shotshell embossed "UMC Co Club, No. 12" (N=2).

Clothing Group (N=12)

A total of 12 items were classified within the architectural group. Of this assemblage, buttons accounted for 41% (N=5), grommets 25% (N=3), and buckles and sewing material each accounted for 17% (N=2 each).

Buckles (N=2)

A total of 2 buckles were recovered from the site. These include a 3cm x 4cm (N=1), and a 2.25cm x 2.5cm (N=1).

Buttons (N=5)

A total of 5 buttons were found. These include bone 4 hole (N=1), bone 2 hole (N=1), milk glass 4 hole (N=1), shell 2 hole (N=1), and unidentified milk glass cuff link style (N=1).

Sewing Material (N=2)

A total of 2 sewing material items were recovered. These include unidentified black leather (N=1), and unidentified blue cloth (N=1).

Grommets (N=3)

A total of 3 grommets were found at the site. These include 1cm diameter (N=2), and oval 1.25cm x 2.25cm (N=1).

Personal Group (N=8)

Miscellaneous (N=8)

A total of 8 miscellaneous personal group items were recovered from the site. These include a stacked leather shoe heel (N=1), unidentified shoe fragments (N=5), and unidentified women's rubber shoe sole (N=2).

Tobacco Group (N=0)

No tobacco group items were found at the site.

Bone Group (N=126)

A total of 126 bone group items were recovered from the site. These include burned bone (N=2), butchered bone (N=21), rodent bone (N=46), rodent teeth (N=1), unmodified bone (N=54), and unmodified mussel shell (N=2).

Activities Group (N=780)

A total of 780 items were classified within the activities group. Of this assemblage, other items accounted for 92% (N=719), miscellaneous hardware 7% (N=56), and tools (N=3), farm tools (N=1), and ethnobotanical items (N=1) each accounted for less than 1%.

Tools (N=3)

A total of 3 tool items were found. These include a saw blade (N=1), a triangular file (N=1), and an unidentified wire handle (N=1).

Farm tools (N=1)

A total of 1 fence staple was recovered from the site.

Ethnobotanical (N=1)

One peach pit was found at the site.

Miscellaneous Hardware (N=56)

A total of 56 miscellaneous hardware items were recovered. These include a bolt (N=1), bolt and nut (N=1), eye screw (N=2), flat metal with cloth and copper rivet (N=1), metal bracket (N=1), metal washer (N=1), miscellaneous screws (N=4), miscellaneous screws with washer (N=4), round tack (N=1), rubber tubing (N=1), wire (N=32), wood screws (N=2), and a zinc strap (N=5).

Other (N=719)

A total of 719 other items were found at the site. These include a cast iron washing machine ringer height adjusting screw (N=1), charcoal (N=1), chrome picture hook (N=6), clear glass magnifying lens (N=1), coal (N=232), coal slag (N=5), copper riveted to flat metal (N=2), electrical fuse endpiece (N=1), lamp chimney body glass (N=435), lamp chimney rim glass (N=19), lamp chimney base glass (N=11), metal gear (N=1), unidentified metal ring (N=1), and unidentified twisted aqua glass rod (N=3).

Miscellaneous Group (N=459)

A total of 459 miscellaneous items were recovered from the site. These include clear plastic sheeting (N=1), heat damaged aqua glass (N=1), heat damaged clear glass (N=13), heat damaged rubber (N=15), heat damaged unidentified glass (N=1), metal rod (N=1), tin can or gutter fragment (N=185), unidentified blue plastic (N=1), unidentified cast iron (N=1), unidentified flat metal (N=5), unidentified metal (N=222), unidentified metal bar (N=6), unidentified metal ring (N=5), unidentified pewter (N=1), and unidentified zinc (N=2).

Mean Ceramic Dating

Mean ceramic dating (South 1977) was used to access the date ranges of individual units. Mean ceramic dating has several limitations. First, the mean ceramic date is based on the date range of manufacture, not use. These temporal periods can be affected by differential curation and availability of ceramics in varied geographic regions (Seifert et al. 1998:19). Given that ranges of manufacture are much longer in the 19th century, mean ceramic dating has been found to be more effective on 18th century sites (Seifert et al. 1998).

Mean ceramic dates were calculated by Unit and Level (Table 1). The mean ceramic date was calculated twice for each level within individual units. The first date shown in the table represents the mean ceramic date with plain whiteware and yellowware included in the calculations. The date in parenthesis represents the mean ceramic date without plain whiteware and yellowware included in the calculations. Given the large time span for the use of whiteware (1820-present) and yellowware (1830-present), it was hoped that calculating a mean ceramic date with plain whiteware and yellowware excluded would produce a more reliable stratigraphic sequence for the site.

Table 1.
Mean Ceramic Dates

Unit 1	MCD	Prehistoric Material?	# of sherds
Level 1	1891 (1843)	yes	7 (2)
Level 2	No ceramics	no	
Level 3	No ceramics	no	
Level 4	No ceramics	no	
Unit 2			
Level 1	1911	no	1
Level 2	No ceramics	no	
Level 3	1911	yes	3
Level 4	No ceramics	no	
Unit 3			
Level 1	1791	no	1
Level 2	1897 (1840)	no	5 (1)
Level 3	1911	no	1
Unit 3			
Level 4	No ceramics	no	

Unit 4	MCD	Prehistoric Material?	# of sherds
Level 1	No ceramics	no	
Level 2	No ceramics	no	
Level 3	No ceramics	no	
Level 4	1844	yes	4
Level 5	No ceramics	no	

It was hoped that by excluding plain whiteware and yellowware, which have open ended dates of manufacture, a more reliable date of occupation would be established. The mean ceramic dates could be interpreted by utilizing the dates with the plain whiteware and yellowware included as the true mean ceramic date and using the mean ceramic date calculated without plain whiteware and yellowware as a date of earliest domestic occupation (Zoll et al. 2000:40). Using this method and including the mean ceramic dates from all units and levels, the mean ceramic date for the site is 1879 and the earliest date of occupation is 1829.

It is evident from Table I that a great amount of disturbance has occurred at the site. The mean ceramic dates were not stratigraphically accurate in any unit or level.

Artifact Patterning

South's (1977) model of artifact patterning yielded two artifact frequency patterns, the Carolina Pattern and the Frontier Pattern. South's (1977) model of artifact patterning was developed to compare sites which had similar occupation, growth, and culture change. The Carolina Pattern is indicative of long term, stable occupation which yields a high frequency of kitchen group artifacts. Unlike the Carolina Pattern, the Frontier Pattern represents short term or special purpose occupation with a high frequency of architectural debris compared to the kitchen debris. As shown in Table 2, 12Sw339 fits favorably into the Carolina Pattern.

Table 2
Comparison of the Hall Site assemblage to South's (1977) artifact patterns.

Artifact Group	Carolina Pattern	Frontier Pattern	12Sw339
Kitchen	47.5-78%	10.2-45%	50%
Architecture	12.9-35.1%	29.7-74.3%	26%
Furniture	0-.7%	0-.5%	<1%
Arms	0-1.5%	0-15.6%	<1%
Artifact Group	Carolina Pattern	Frontier Pattern	12Sw339
Clothing	0-8.5%	0-6.9%	<1%

Artifact Group	Carolina Pattern	Frontier Pattern	12Sw339
Personal	0-.6%	0-.7%	<1%
Tobacco	0-20.8%	0-27.1%	0%
Activities	.1-3.7%	0-11.8%	13%

Ball (1984), applying South's artifact patterning method to sites in the Ohio River Valley, identified four artifact patterns. These include Residential, Architectural, Open Refuse, and Sealed Refuse. As shown in Table 3, 12Sw339 fits more closely within the Residential and Sealed Refuse pattern than the other two patterns of Ball's model.

**Table 3 .
Comparison of the Hall Site assemblage to Ball's (1984) artifact patterns.**

Artifact Group	Residential	Architectural	Open Refuse	Sealed Refuse	12Sw339
Kitchen	46.56%	24.31%	90.32%	75.33%	50%
Architecture	47.37%	65.88%	6.71%	20.25%	26%
Furniture	.29%	.69%	.04%	.24%	<1%
Clothing	.79%	2.34%	.30%	.71%	<1%
Personal	.19%	.51%	.08%	.66%	<1%
Activities	4.63%	5.74%	2.10%	2.78%	13%
Arms	.17%	.53%	.45%	.03%	<1%

Artifact groupings by unit are shown in Tables 4-7. Artifact groupings by levels within each unit are shown in Appendix 3.

Table 4. Unit 1

Unit 1 Total	Category	Includes	Number Present	Percent Represented
	Kitchen Group	Ceramic Vessels Glass Vessels Metal Vessels Utensils Pharmaceuticals Kitchen Ware	12 1351 8 0 0 0	94%
	Architectural Group	Window Glass Nails Spikes Construction Materials Door Parts	20 16 0 9 0 0	3%
	Furniture Group	Furniture Hardware	0	0%
	Arms Group	Projectiles Cartridges Firearm Parts	0 0 0	0%
	Clothing Group	Buckles Buttons Sewing Material Grommets Scissors Glass Beads	0 1 0 1 0 0	<1%
	Personal Group	Coins Keys Jewelry Misc.	0 0 0 0	0%
	Tobacco Group	Pipes Tobacco Related	0 0	0%
	Bone Group	Faunal	0	0%
	Activities Group	Tools Farm Tools Fishing Gear Stable and Barn Ethnobotanical Misc. Hardware Toys Other	0 0 0 0 0 13 0 17	2%
	Miscellaneous	Unidentified	2	<1%
	Totals		1450	100%

Table 5. Unit 2

Unit 2 Total	Category	Includes	Number Present	Percent Represented
	Kitchen Group	Ceramic Vessels Glass Vessels Metal Vessels Utensils Pharmaceuticals Kitchen Ware	6 6 0 0 0 3	5%
	Architectural Group	Window Glass Nails Spikes Construction Materials Door Parts	5 82 0 1 3 3	29%
	Furniture Group	Furniture Hardware	0	0%
	Arms Group	Projectiles Cartridges Firearm Parts	0 0 0	0%
	Clothing Group	Buckles Buttons Sewing Material Grommets Scissors Glass Beads	0 0 0 0 0 0	0%
	Personal Group	Coins Keys Jewelry Misc.	0 0 0 0	0%
	Tobacco Group	Pipes Tobacco Related	0 0	0%
	Bone Group	Faunal	8	3%
	Activities Group	Tools Farm Tools Fishing Gear Stable and Barn Ethnobotanical Misc. Hardware Toys Other	0 1 0 0 0 3 0 10	4%
	Miscellaneous	Unidentified	185	59%
	Totals		313	100%

Table 6. Unit 3

Unit 3 Total	Category	Includes	Number Present	Percent Represented
	Kitchen Group	Ceramic Vessels Glass Vessels Metal Vessels Utensils Pharmaceuticals Kitchen Ware	8 71 29 0 0 0	21%
	Architectural Group	Window Glass Nails Spikes Construction Materials Door Parts	77 178 5 62 0 0	63%
	Furniture Group	Furniture Hardware	0	0%
	Arms Group	Projectiles Cartridges Firearm Parts	0 1 0	<1%
	Clothing Group	Buckles Buttons Sewing Material Grommets Scissors Glass Beads	1 2 1 1 0 0	1%
	Personal Group	Coins Keys Jewelry Misc.	0 0 0 2	<1%
	Tobacco Group	Pipes Tobacco Related	0 0	0%
	Bone Group	Faunal	54	11%
	Activities Group	Tools Farm Tools Fishing Gear Stable and Barn Ethnobotanical Misc. Hardware Toys Other	0 0 0 0 0 4 0 2	1%
	Miscellaneous	Unidentified	13	2%
	Totals		511	100%

Table 7. Unit 4

Unit 4 Total	Category	Includes	Number Present	Percent Represented
	Kitchen Group	Ceramic Vessels Glass Vessels Metal Vessels Utensils Pharmaceuticals Kitchen Ware	16 1027 376 1 0 20	40%
	Architectural Group	Window Glass Nails Spikes Construction Materials Door Parts	434 275 2 396 0	30%
	Furniture Group	Furniture Hardware	2	<1%
	Arms Group	Projectiles Cartridges Firearm Parts	0 2 0	<1%
	Clothing Group	Buckles Buttons Sewing Material Grommets Scissors Glass Beads	1 2 1 1 0 0	<1%
	Personal Group	Coins Keys Jewelry Misc.	0 0 0 6	<1%
	Tobacco Group	Pipes Tobacco Related	0 0	0%
	Bone Group	Faunal	64	2%
	Activities Group	Tools Farm Tools Fishing Gear Stable and Barn Ethnobotanical Misc. Hardware Toys Other	3 0 0 0 1 36 0 690	20%
	Miscellaneous	Unidentified	259	7%
	Totals		3615	100%

Conclusions

Artifacts from the Kitchen and Architectural Groups accounted for approximately 77% of all artifacts recovered from the site. This fact combined with the recovery of artifacts from the Furniture, Clothing, Personal, Tobacco, and Activities Groups would support the notion of domestic habitation at the site. Unfortunately, due to the amount of disturbance at the site, a stratigraphic sequence is impossible to ascertain.

Prehistoric Artifacts

A total of 3 lithic artifacts were recovered from 12Sw339. These include 3 unmodified flakes, 1 of heat damaged Laurel chert, and 2 of Laurel chert.

No fire cracked rock or prehistoric features were found at 12Sw339. Historic and prehistoric materials were mixed in all units and levels where prehistoric materials were found. No levels in any units contained only prehistoric material. Due to this mixing of historic and prehistoric materials, no intact prehistoric occupations were found to exist.

Stratigraphy

The stratigraphy for site 12Sw339 was reconstructed from wall profiles of the excavated units. The profiles recorded extensive disturbance to the A-horizon extending into the B-horizon. Each unit displayed different strata and will be discussed separately. The stratigraphic zones were defined by color, texture, and structure.

Unit 1 had two recognized stratigraphic zones besides the disturbance from the well (Figure 5). Zone 1 was a very dark, grayish brown (10YR3/2) silt loam. It was a developing A-horizon that had been mixed with historic fill, particularly rocks. Zone 2 was a dark yellowish brown (10YR4/6) silty clay loam. This zone was a B-horizon with minimal disturbance.

Unit 2 had four documented strata (Figure 6). Zone 1 was a dark gray (10YR4/1) silt loam that was discontinuous across the surface. Zone 2 had a white (10YR8/1) ash matrix that was mixed with coal and slag. Zones 1 and 2 appear to be historic fill at the site. Zone 3 was a dark gray (10YR4/1) silt loam that most likely represents the original ground surface. This zone also showed historic disturbance and mixing. Zone 4 was a brownish yellow (10YR6/6) silty clay loam with dark brown (10YR3/3) mottles. This was an unaltered B-horizon.

Unit 3 was placed across the house foundation and the upper strat varied due to the interior or exterior placement within the house (Figure 7). Zone 1 was a brown (10YR4/3) silt loam layer that contained mortar. It was encountered across the foundation and on the exterior of the building. Zone 2 was a dark brown (10YR3/3) silt loam that occurred at the surface on the interior of the building and below Zone 1 on the exterior. Zone 3 was a yellowish brown (10YR5/4) silt loam that contained brown (10YR4/3) and brownish yellow (10YR6/6) mottles. This layer was mixed with charcoal and brick fragment. Zones 1, 2, and 3 all represented mixed deposits either disturbed from the construction and/or demolition of the building. Zone 4 was a

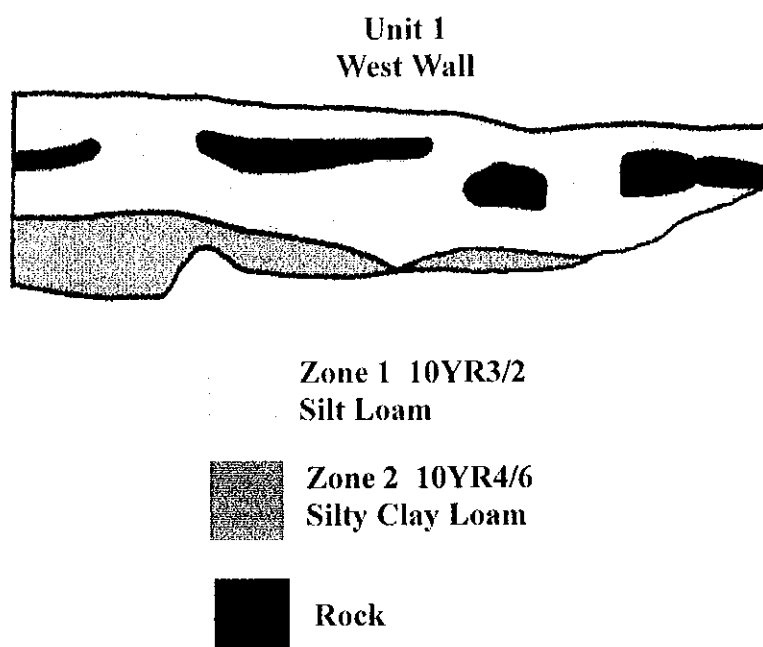


Figure 5. Stratigraphic profile of Unit 1. Scale 1"= 50cm.

Unit 2
East Wall

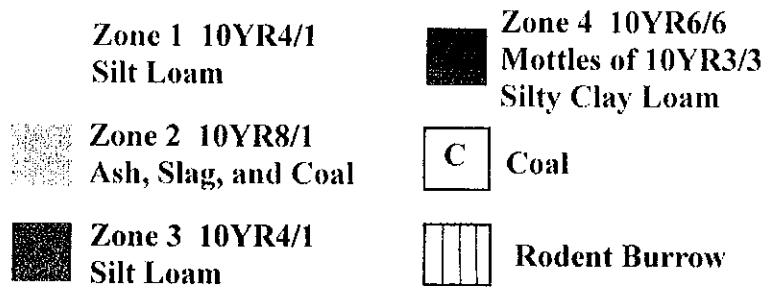
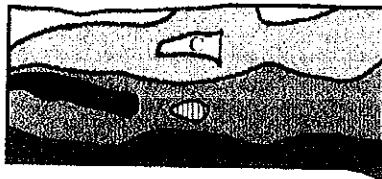


Figure 6. Stratigraphic profile of Unit 2. Scale 1"= 50cm.

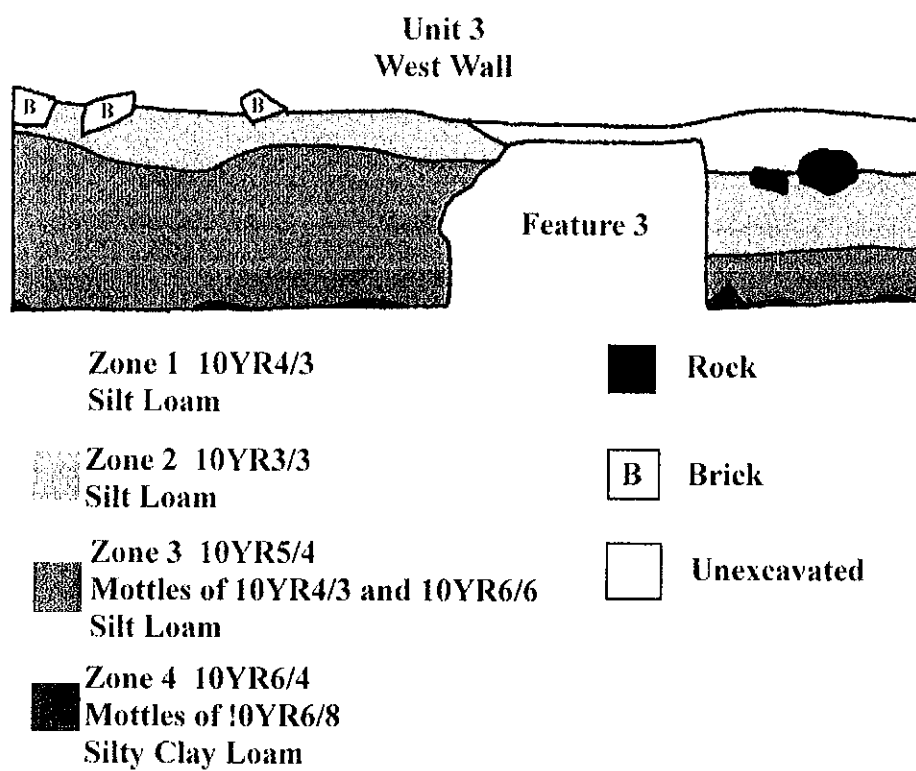


Figure 7. Stratigraphic profile of Unit 3. Scale 1"= 40cm.

light yellowish brown (10YR6/4) silty clay loam that contained brownish yellow (10YR6/80) mottles. Zone 4 appeared to represent an unaltered B/C horizon.

Unit 4 was also placed across the house foundation but the strata did not display differences on the interior or exterior of the structure (Figure 8). Zone 1 was a dark grayish brown (10YR4/2) silt loam with inclusions of coal and rock. Zone 2 was a brown (10YR4/3) silt loam that was mixed with historic artifacts and rock. Zones 1 and 2 were mixed deposits disturbed from the construction and/or demolition of the house. Zone 3 was a brownish yellow (10YR6/6) silty clay loam that had minimal disturbance and the appearance of a B/C horizon.

The stratigraphy documented at site 12Sw339 had extensive historic disturbance to the upper layers of soil. The disturbance was due to combinations of mixing and churning of the soil and fill from historic materials. No intact A-horizon was noted within any of the units excavated. The B-horizon was also altered by mixing in most of the units. The mixing of deposits at the site ranged in depth from approximately 30 to 40 cm below the present ground surface.

Conclusions and Recommendations

Testing of site 12Sw339 was undertaken to determine the nature, extent and significance of the archaeological deposits there. The historic deposits were specifically targeted for testing based on their potential to provide information on early rural settlement in southeastern Indiana.

The historic documentation consulted for this site revealed that the documentation was not sufficiently detailed to determine when the structure at the site was built. In addition, ambiguities in the record prevented the establishment of a clear history of ownership. The documents did, however, indicate that the structure was most likely abandoned and demolished or removed prior to the 1940s.

Testing of the site resulted in the recovery of almost 6,000 historic and 3 prehistoric artifacts. The artifacts supported the suggested date ranges for the structure identified in the historical documents, i.e., between the mid 19th century and the mid 20th century. Testing identified construction techniques and functions of features at the site. The foundation was dry laid brick and limestone. The well was constructed of dry laid limestone, with a concrete cap. The coal stain/concentration was irregular in shape, and probably represented the disposal of burned coal and other materials from the house. Testing also documented that considerable historic disturbance had occurred at the site which affected the integrity of the deposits. No prehistoric features or intact deposits were found during testing.

In general, the evaluation of site 12Sw339 provided useful and important information about early rural settlement in Switzerland County. The lack of substantive information relevant to the landowners who constructed the house and other features there combined with the lack of integrity resulting from historic disturbance seriously reduced the archaeological significance of the site. It is our assessment that the site was mitigated through the recovery of data during the testing and that the site does not contain additional significant data. It is therefore our opinion that the site is not eligible for listing on the Indiana or National Register of Historic Places and

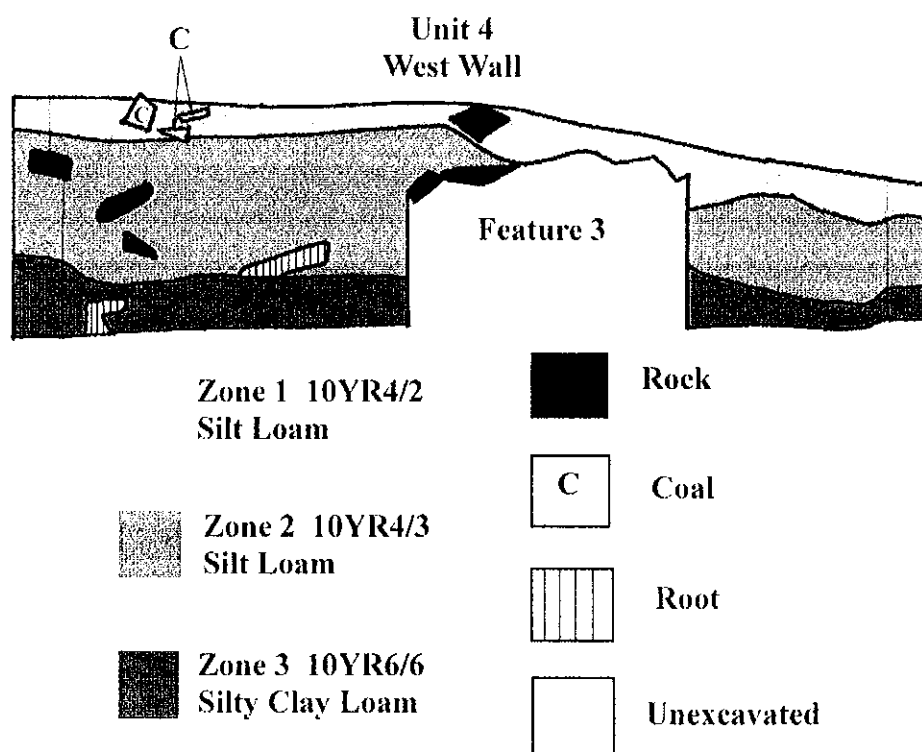


Figure 8. Stratigraphic profile of Unit 4. Scale 1"= 40cm.

that construction should be allowed to proceed. If human remains were to be encountered during construction, work must be immediately halted and the Division of Historic Preservation and Archaeology of the Indiana Department of Natural Resources and local law enforcement officials contacted as required by state law.

References Cited

Angst, Michael

- 1998 SR 129 Rehabilitation. Archaeological Field Reconnaissance. Archaeological Resources Management Service, Ball State University, Muncie, Indiana.

Anonymous

- 1885 History of Switzerland County, Indiana: From Their Earliest Settlers. Weakley, Harraman & Company, Publishers: Chicago.

- 1980 Indiana Historic Sites and Structures Inventory, Switzerland County, Interim Report. Indiana Department of Natural Resources: Indianapolis.

- 2001, 15 October. <http://www.antiquebottles.com/dating.html>

Ball, Donald B.

- 1984 Historic Artifact Patterning in the Ohio Valley. Proceedings of the Symposium on Ohio Valley Urban and Historic Archaeology 2:24-36.

Brantley, William F.

- 1975 A Collector's Guide to Ball Jars. Rosemary Humbert Martin: Muncie.

Feldhues, William J.

- 1995 Guide to Identifying and Dating Historic Glass and Ceramics. Archaeological Resources Management Service. Ball State University: Muncie.

Griffing, B.N., dir.

- 1888 An Atlas of Switzerland and Ohio Counties, Indiana: from Actual Surveys Under the Direction of B. N. Griffing. D. J. Lake & Co.: Philadelphia, PA.

Huser, William A.

- 1993 Archaeology and Socioeconomic Evaluation of the William Connor House Site (12H608): A 19th Century Rural Residence in Hamilton County, Indiana. M.A. thesis, Department of Anthropology, Ball State University, Muncie, Indiana.

Hinson, David

- 2001, October 15. Frequently Asked Questions -- Fruit Jars. <http://www.av.qnet.com/~glassman/info/jarfaq.htm>. Email: <glassman@qnet.com>.

IMACS

1984 IMACS User's Guide.

Lofstrom, Ted, Jeffrey P. Tordoff, and Douglas C. George

1982 A seriation of Historic Earthenwares in the Midwest, 1780-1870. The Minnesota Archaeologist Spring/Summer 41 (1):3-29.

Majewski, Teresita and Michael J. O'Brien

1987 The Use and Misuse of Nineteenth-Century English and American Ceramics in Archaeological Analysis. *In* Advances in Archaeological Methods and Theory Vol. 11, edited by Michael B. Schiffer. Academic Press, Inc.: San Diego.

Newman, T. Stell

1970 A Dating Key for Post-Eighteenth Century Bottles. Historical Archaeology. 4:70-75.

ODOT

1991 Coding System Manual for the East Liverpool, Ohio Urban Archaeology Project. Archaeology Series No. 1, Ohio Department of Transportation, Columbus, Ohio.

South, Stanley

1977 Method and Theory in Historical Archaeology. Academic Press, New York, New York.

Switzerland County Deed Records. 1817-present. On file at Recorder's Office, Switzerland County Courthouse.

Switzerland County Deed Record Indices. On file at Recorder's Office, Switzerland County Courthouse.

Switzerland County Records. Indiana Property Record Cards. On file at Assessor's Office, Switzerland County Courthouse.

Switzerland County Transfer Records. On file at Assessor's Office, Switzerland County Courthouse.

Zoll, Mitchell

2000 Testing Proposal for Project STP-3378 (), Pavement Repair and Rehabilitation on SR 129 for 12 Miles from SR 56 to SR 250, Des. #9502690, Switzerland County, Indiana. Ball State Archaeological Resources Management Service, Ball State University, Muncie, Indiana.

Zoll, Mitchell, Kari Carmany, Rebecca Sick, and Kimberly Zunker

2000 Excavation at the Former Location of the Richardville/LaFontainer House, Huntington County, Indiana. Archaeological Resources Management Service, Ball State University, Muncie, Indiana.

1860 Census for Switzerland County. On file at Vevay Public Library.

Appendix 1.
Artifacts by unit and level

Unit 1
unprovenienced

<u>Identification</u>	<u>Raw Material</u>	<u>#</u>
Glass, amethyst, container, unidentified, base 1880-1925 (Newman 1970:74)		1
Glass, clear, container, unidentified, body 1875-present (Fike 1984 in IMACS 1984)		44
Glass, clear, container, unidentified, embossed, base 1875-present (Fike 1984 in IMACS 1984)		1
Glass, clear, container, ketchup bottle, base 1875-present (Fike 1984 in IMACS 1984)		1
Metal, flat, gutter fragments		4
Metal, wire		1
	<u>Total</u>	<u>52</u>

Unit 1
surface

<u>Identification</u>	<u>Raw Material</u>	<u>#</u>
Ceramic, unidentified, heat damaged		1
Ceramic, whiteware, plain, body 1820-present (ODOT 1991:177)		1
Charcoal		1
Coal		3
Coal slag		1
Glass, clear, container, unidentified, body 1875-present (Fike 1984 in IMACS 1984)		70
Glass, clear, container, unidentified, embossed "...Red", body 1875-present (Fike 1984 in IMACS 1984)		1
Glass, clear, container, unidentified, covered in melted plastic, body 1875-present (Fike 1984 in IMACS 1984)		15
Glass, clear, container, unidentified, covered in melted plastic, rim 1875-present (Fike 1984 in IMACS 1984)		2
Glass, clear, container, unidentified, covered in melted plastic, external thread, rim 1875-present (Fike 1984 in IMACS 1984)		1
Glass, clear, container, unidentified, heat damaged, body 1875-present (Fike 1984 in IMACS 1984)		1
Glass, clear, container, unidentified, orange paint or decal decoration, "Dairy ...ucts", Dairy products?, body 1875-present (Fike 1984 in IMACS 1984)		2
Glass, clear, thin, light bulb or lamp chimney 1875-present (Fike 1984 in IMACS 1984)		9

<u>Identification</u>	<u>Raw Material</u>	<u>#</u>
Metal, gutter fragment		2
Metal, rod, .4cm diameter x 8.2cm length		1
Metal, tin can fragments		8
	<u>Total</u>	<u>119</u>

Unit 1
level 1

<u>Identification</u>	<u>Raw Material</u>	<u>#</u>
Brick fragment		1
Ceramic, ironstone, plain, body 1800-1885 (Majewski and O'Brien 1987:120-23)		2
Ceramic, stoneware, buff paste, no glaze exterior, dark brown glaze interior, base		1
Ceramic, stoneware, buff paste, grey salt glaze exterior, one side only, body		1
Ceramic, stoneware, grey paste, tan salt glaze exterior, brown glaze interior, body		1
Ceramic, whiteware, plain, base 1820-present (ODOT 1991:177)		3
Ceramic, whiteware, plain, body 1820-present (ODOT 1991:177)		2
Coal		1
Glass, amber, container, unidentified, body 1860-present (Fike 1984 in IMACS 1984)		6
Glass, aqua, container, unidentified, base 1800-1910 (Fike 1984 in IMACS 1984)		1
Glass, aqua, container, unidentified, body 1800-1910 (Fike 1984 in IMACS 1984)		6
Glass, aqua, flat		10
Glass, clear, container, embossed, ketchup bottle, body 1875-present (Fike 1984 in IMACS 1984)		2
Glass, clear, container, unidentified, base 1875-present (Fike 1984 in IMACS 1984)		2
Glass, clear, container, unidentified, bead, lip 1875-present (Fike 1984 in IMACS 1984)		4
Glass, clear, container, unidentified, body 1875-present (Fike 1984 in IMACS 1984)		896
Glass, clear, container, unidentified, embossed "3D", base 1875-present (Fike 1984 in IMACS 1984)		1
Glass, clear, container, unidentified, embossed "Ball", body 1875-present (Fike 1984 in IMACS 1984)		1
Glass, clear, container, unidentified, embossed "Duraglass", base 1940-1960s (Hinson 2000)		4
Glass, clear, container, unidentified, embossed, base 1875-present (Fike 1984 in IMACS 1984)		1
Glass, clear, container, unidentified, embossed, body 1875-present (Fike 1984 in IMACS 1984)		18
Glass, clear, container, unidentified, external thread, lip 1875-present (Fike 1984 in IMACS 1984)		2
Glass, clear, container, unidentified, lip 1875-present (Fike 1984 in IMACS 1984)		1

<u>Identification</u>	<u>Raw Material</u>	<u>#</u>
Glass, clear, container, unidentified, neck 1875-present (Fike 1984 in IMACS 1984)		2
Glass, clear, container, unidentified, orange paint or decal, milk bottle?, body 1875-present (Fike 1984 in IMACS 1984)		39
Glass, clear, container, unidentified, snap on lid, lip 1875-present (Fike 1984 in IMACS 1984)		1
Glass, clear, flat		7
Glass, green, container, unidentified, body 1860-present (Fike 1984 in IMACS 1984)		3
Metal, flat, gutter fragments		17
Metal, gear		1
Metal, grommet, 1cm in diameter		1
metal, nails, round, broken		1
Metal, nails, round, 6.5cm		3
metal, nails, square, hand forged, 3cm		1
Metal, nails, square, machine cut, 6.5cm		5
Metal, nails, square, machine cut, 4cm		3
Metal, nails, square, machine cut, 3cm		1
Metal, screws, wood, counter sunk head, standard, 3cm		2
Metal, wire		4
Metal, zinc strap, 1.5cm wide, holes of .5cm diameter		5
Plastic, blue, unidentified		1
Rubber, tubing, 1cm interior diameter, farm machinery or auto use		1
Unmodified flake	Laurel	1
	<u>Total</u>	<u>1065</u>

Unit 1
level 2

<u>Identification</u>	<u>Raw Material</u>	<u>#</u>
Button, glass, milk, cuff link style, unidentified		1
Glass, aqua, flat		1
Glass, clear, container, unidentified, base 1875-present (Fike 1984 in IMACS 1984)		1
Glass, clear, container, unidentified, bead, lip 1875-present (Fike 1984 in IMACS 1984)		3
Glass, clear, container, unidentified, body 1875-present (Fike 1984 in IMACS 1984)		196
Glass, clear, container, unidentified, embossed, base 1875-present (Fike 1984 in IMACS 1984)		3

<u>Identification</u>	<u>Raw Material</u>	<u>#</u>
Glass, clear, container, unidentified, embossed, body 1875-present (Fike 1984 in IMACS 1984)		4
Glass, clear, container, unidentified, embossed "Dura(glass)", base 1902-1964 (Hinson 2000)		1
Glass, clear, container, unidentified, orange paint or decal, milk bottle?, body 1875-present (Fike 1984 in IMACS 1984)		4
Glass, clear, container, unidentified, snap on lid, lip 1875-present (Fike 1984 in IMACS 1984)		4
Glass, clear, flat		2
Glass, clear, thin, light bulb or lamp chimney 1875-present (Fike 1984 in IMACS 1984)		1
Glass, green, container, unidentified, body 1860-present (Fike 1984 in IMACS 1984)		2
Glass, green, container, unidentified, lip 1860-present (Fike 1984 in IMACS 1984)		1
Metal, nails, round, 6.5cm		2
	<u>Total</u>	<u>226</u>

Unit 1
Level 3

<u>Identification</u>	<u>Raw Material</u>	<u>#</u>
Glass, clear, container, unidentified, body 1875-present (Fike 1984 in IMACS 1984)		3
Glass, clear, container, unidentified, lip 1875-present (Fike 1984 in IMACS 1984)		1
	<u>Total</u>	<u>4</u>

Unit 1
Level 4

<u>Identification</u>	<u>Raw Material</u>	<u>#</u>
Wallpaper, white, unidentified		1
	<u>Total</u>	<u>1</u>

Unit 2
Unprovenienced

<u>Identification</u>	<u>Raw Material</u>	<u>#</u>
Glass, clear, heat damaged 1875-present (Fike 1984 in IMACS 1984)		1
	<u>Total</u>	<u>1</u>

Unit 2
Feature 2

<u>Identification</u>	<u>Raw Material</u>	<u>#</u>
Metal, nails, round, roofing, 3cm		1
Metal, unidentified		31
	<u>Total</u>	<u>32</u>

Unit 2
Level 1

<u>Identification</u>	<u>Raw Material</u>	<u>#</u>
Ceramic, whiteware, heat damaged, body 1820-present (ODOT 1991:177)		1
Glass, clear, container, unidentified, body 1875-present (Fike 1984 in IMACS 1984)		2
Glass, clear, heat damaged 1875-present (Fike 1984 in IMACS 1984)		2
Glass, milk, container, unidentified, body 1890-1960 (Fike 1984 in IMACS 1984)		1
Metal, fence staple		1
Metal, hinge 1/2, 3 screw holes		1
Metal, hinge, 3 screw holes per side, with round nail		2
Metal, nails, round, 6cm		2
Metal, nails, round, 5cm		3
Metal, nails, round, 4cm		2
Metal, nails, round, broken		1
Metal, nails, round, roofing, 2.5cm		3
Metal, nails, square, machine cut, 5cm		2
Metal, nails, square, machine cut, 2.5cm		1
Metal, nails, square, machine cut, broken		2
Metal, nails, unidentified		7
Metal, sardine can type keys		3
Metal, unidentified		13
Metal, zinc, unidentified		1

Unit 2
Level 2

<u>Identification</u>	<u>Raw Material</u>	<u>#</u>
Brick fragment		1
Coal		5
Coal slag		3
Glass, aqua, container, unidentified, embossed, body 1800-1910 (Fike 1984 in IMACS 1984)		1
Glass, aqua, flat		1
Glass, clear, flat		1
Glass, clear, heat damaged 1875-present (Fike 1984 in IMACS 1984)		9

<u>Identification</u>	<u>Raw Material</u>	<u>#</u>
Glass, unidentified, heat damaged		1
Metal, bracket, with two unidentified fasteners		1
Metal, nails, round, 8cm		1
Metal, nails, round, 7cm		15
Metal, nails, round, 5cm		6
Metal, nails, round, 4cm		2
Metal, nails, round, 2.5cm		1
Metal, nails, round, broken		2
Metal, nails, round, roofing, 2.5cm		1
Metal, nails, square, machine cut, 5cm		1
Metal, nails, unidentified		4
Metal, ring, unidentified, 1cm in diameter		1
Metal, screw, unidentified, broken		1
Metal, screw, unidentified, with washer		1
Metal, unidentified, from Fea. 2		125
	<u>Total</u>	<u>184</u>

Unit 2
level 3

<u>Identification</u>	<u>Raw Material</u>	<u>#</u>
Bone, unidentified, butchered		4
Bone, unidentified, unbutchered		2
Bone, unidentified, unbutchered, burned		2
Ceramic, stoneware, buff paste, dark brown glaze interior/exterior, body		1
Ceramic, stoneware, buff paste, orange glaze exterior, no glaze interior, body		1
Ceramic, whiteware, plain, body 1820-present (ODOT 1991:177)		1
Ceramic, whiteware, plain, heat damaged, body 1820-present (ODOT 1991:177)		1
Ceramic, whiteware, plain, rim 1820-present (ODOT 1991:177)		1
Glass, aqua, flat		1
Glass, aqua, heat damaged 1800-1910 (Fike 1984 in IMACS 1984)		1
Glass, clear, container, unidentified, body 1875-present (Fike 1984 in IMACS 1984)		1
Glass, clear, container, unidentified, embossed, body 1875-present (Fike 1984 in IMACS 1984)		1
Glass, clear, flat		2
Glass, clear, thin, light bulb or lamp chimney 1875-present (Fike 1984 in IMACS 1984)		1
Metal, nails, square, machine cut, 7.5cm		1
metal, nails, square, machine cut, 5cm		2
Metal, nails, square, machine cut, 4cm		1
Metal, nails, square, machine cut, broken		8
Metal, nails, unidentified		12
Metal, unidentified		1

<u>Identification</u>	<u>Raw Material</u>	<u>#</u>
Unmodified flake	Laurel	1
	<u>Total</u>	<u>46</u>

Unit 2
level 4

<u>Identification</u>	<u>Raw Material</u>	<u>#</u>
Metal, nails, unidentified		1
	<u>Total</u>	<u>1</u>

Unit 3
Unprovenienced

<u>Identification</u>	<u>Raw Material</u>	<u>#</u>
Bone, unidentified, unbutchered		3
Glass, amber, container, unidentified, body 1860-present (Fike 1984 in IMACS 1984)		3
Glass, amber, container, unidentified, embossed, base 1860-present (Fike 1984 in IMACS 1984)		1
Glass, aqua, container, unidentified, base 1800-1910 (Fike 1984 in IMACS 1984)		1
Glass, aqua, flat		21
Glass, clear, container, unidentified, body 1875-present (Fike 1984 in IMACS 1984)		21
Glass, clear, container, unidentified, embossed, body 1875-present (Fike 1984 in IMACS 1984)		1
Glass, clear, container, unidentified, lip 1875-present (Fike 1984 in IMACS 1984)		1
Glass, clear, flat		11
Linoleum, unidentified		14
Metal, lead, washer from nail		1
Metal, nails, round, 5.5cm		1
Metal, nails, round, 4cm		1
Metal, nails, round, aluminum, broken		1
Metal, nails, round, broken		2
Metal, nails, square, machine cut, 6.5cm		1
Metal, nails, square, machine cut, 4cm		2
Metal, nails, square, machine cut, 3.5cm		3
Metal, nails, square, machine cut, broken		23
Metal, nails, unidentified		5
Metal, tin can fragments		10
Metal, zinc, unidentified		1
Plastic, clear, sheeting		1
Rubber, heat damaged		1
	<u>Total</u>	<u>130</u>

Unit 3
Surface

<u>Identification</u>	<u>Raw Material</u>	<u>#</u>
Ceramic, stoneware, grey paste, tan salt glaze exterior, brown glaze interior, Body/base		1
Glass, aqua, flat		1
Glass, clear, container, unidentified, body 1875-present (Fike 1984 in IMACS 1984)		1
	<u>Total</u>	<u>3</u>

Unit 3
Level 1

<u>Identification</u>	<u>Raw Material</u>	<u>#</u>
Bone, rodent		39
Bone, unidentified, unbutchered		7
Brick fragment		2
Ceramic, creamware, plain, body 1762-1820 (Lofstrom et al. 1982:14)		1
Glass, amber, container, unidentified, body 1860-present (Fike 1984 in IMACS 1984)		7
Glass, aqua, flat		4
Glass, clear, container, unidentified, base 1875-present (Fike 1984 in IMACS 1984)		1
Glass, clear, container, unidentified, body 1875-present (Fike 1984 in IMACS 1984)		13
Glass, clear, container, unidentified, embossed, body 1875-present (Fike 1984 in IMACS 1984)		6
Glass, clear, container, unidentified, external thread, lip 1875-present (Fike 1984 in IMACS 1984)		2
Glass, clear, container, unidentified, lip 1875-present (Fike 1984 in IMACS 1984)		2
Glass, clear, flat		20
Linoleum, unidentified		37
Metal buckle, 3cm x 4cm		1
Metal, flat, unidentified		5
Metal, grommet, oval, 1.25cm x 2.25cm		1
Metal, nails, round, 4.5cm		3
Metal, nails, round, 3cm		1
Metal, nails, round, 2.5cm		1
Metal, nails, round, broken		2
Metal, nails, round, roofing, 2.5cm		2
metal, nails, round, with rubber washer, 4.5cm		3
Metal, nails, square, machine cut, 7.5cm		4
Metal, nails, square, machine cut, 6.5cm		12
Metal, nails, square, machine cut, 5.5cm		4

<u>Identification</u>	<u>Raw Material</u>	<u>#</u>
Metal, nails, square, machine cut, 4.5cm		5
Metal, nails, square, machine cut, 4cm		2
Metal, nails, square, machine cut, 3.25cm		2
Metal, nails, square, machine cut, broken		49
Metal, nails, unidentified		7
Metal, screw, unidentified		1
Metal, spike, square, machine cut, 10cm		5
metal, tin can fragment		4
Metal, wire		3
Mortar		8
Rubber, heat damaged		3
Shoe, sole, rubber, women's, unidentified		2
Tooth, rodent		1
	<u>Total</u>	<u>292</u>

Unit 3

Level 2

<u>Identification</u>	<u>Raw Material</u>	<u>#</u>
Bone, unidentified, butchered		1
Bone, unidentified, unbutchered		3
Button, bone, 4 hole		1
Ceramic, whiteware, plain, body 1820-present (ODOT 1991:177)		1
Ceramic, whiteware, plain, rim 1820-present (ODOT 1991:177)		2
Ceramic, whiteware, red transfer print, unidentified, body 1830-1850 (Lofstrom et al. 1982:14)		1
Ceramic, yellowware, plain, body 1830-present (ODOT 1991:177)		1
Cloth, blue, unidentified		1
Firearms cartridge, caliber .22 short, no maker's mark, rectangular firing pin		1
Glass, amber, container, unidentified, body 1860-present (Fike 1984 in IMACS 1984)		1
Glass, amber, container, unidentified, embossed, base 1860-present (Fike 1984 in IMACS 1984)		1
Glass, aqua, flat		7
Glass, clear, container, unidentified, body 1875-present (Fike 1984 in IMACS 1984)		4
Glass, clear, flat		5
Metal, electrical fuse endpiece		1
Metal, lead, washer from nail		1
Metal, nails, round, 5cm		1
Metal, nails, round, broken		2
Metal, nails, round, roofing, 2.5cm		1
Metal, nails, square, machine cut, 8cm		2
Metal, nails, square, machine cut, 7cm		1

<u>Identification</u>	<u>Raw Material</u>	<u>#</u>
Metal, nails, square, machine cut, 4.5cm		1
Metal, nails, square, machine cut, 3.5cm		1
Metal, nails, square, machine cut, 2.5cm		1
Metal, nails, square, machine cut, broken		16
Metal, nails, unidentified		4
Metal, tin can fragment		15
Mortar		1
	<u>Total</u>	<u>78</u>

Unit 3

Level 3

<u>Identification</u>	<u>Raw Material</u>	<u>#</u>
Button, bone, 2 hole		1
Ceramic, whiteware, plain, body 1820-present (ODOT 1991:177)		1
Coal		1
Glass, aqua, container, unidentified, body 1800-1910 (Fike 1984 in IMACS 1984)		1
Glass, aqua, flat		6
Glass, clear, container, unidentified, body 1875-present (Fike 1984 in IMACS 1984)		1
Glass, green, container, unidentified, body 1860-present (Fike 1984 in IMACS 1984)		1
Metal, nails, round, broken		1
Metal, nails, square, machine cut, 7cm		1
Metal, nails, square, machine cut, 4cm		1
Metal, nails, square, machine cut, broken		6
Metal, nails, unidentified		1
Metal, unidentified		2
	<u>Total</u>	<u>24</u>

Unit 3

Level 4

<u>Identification</u>	<u>Raw Material</u>	<u>#</u>
Glass, aqua, flat		1
Glass, clear, container, unidentified, body 1875-present (Fike 1984 in IMACS 1984)		2
Glass, clear, flat		1
	<u>Total</u>	<u>4</u>

Unit 4

Surface

<u>Identification</u>	<u>Raw Material</u>	<u>#</u>
Glass, aqua, flat		1

<u>Identification</u>	<u>Raw Material</u>	<u>#</u>
Glass, clear, container, unidentified, body 1875-present (Fike 1984 in IMACS 1984)		2
Glass, clear, flat		1
Metal, tin can fragment		1
	<u>Total</u>	<u>5</u>

Unit 4
Level 1

<u>Identification</u>	<u>Raw Material</u>	<u>#</u>
Bone, unidentified, unbutchered		1
Brick fragments		3
Coal		2
Coal slag		1
Glass, amethyst, container, unidentified, base 1880-1925 (Newman 1970:74)		1
Glass, amethyst, container, unidentified, body 1880-1925 (Newman 1970:74)		5
Glass, aqua, container, unidentified, body 1800-1910 (Fike 1984 in IMACS 1984)		3
Glass, aqua, flat		13
Glass, clear, container, unidentified, body 1875-present (Fike 1984 in IMACS 1984)		48
Glass, clear, container, unidentified, lip 1875-present (Fike 1984 in IMACS 1984)		1
Glass, clear, container, unidentified, embossed, base 1875-present (Fike 1984 in IMACS 1984)		1
Glass, clear, container, unidentified, embossed, body 1875-present (Fike 1984 in IMACS 1984)		5
Glass, clear, container, unidentified, orange paint or decal decoration, body 1875-present (Fike 1984 in IMACS 1984)		1
Glass, clear, container, unidentified, prescription lip, lip and neck 1875-present (Fike 1984 in IMACS 1984)		1
Glass, clear, container, unidentified, snap on type lid, lip 1875-present (Fike 1984 in IMACS 1984)		1
Glass, clear, container, unidentified, straight brandy or wine lip, lip and neck 1875-present (Fike 1984 in IMACS 1984)		1
Glass, clear, flat		22
Glass, clear, thin, lamp chimney fragment, body 1875-present (Fike 1984 in IMACS 1984)		18
Glass, clear, thin, lamp chimney fragment, rim 1875-present (Fike 1984 in IMACS 1984)		1
Linoleum		302
Metal, buckle, 2.25cm x 2.5cm		1
Metal, flat, tin can or gutter fragment		185
Metal, lead, washer from nail		3
Metal, nails, round, with lead washers		3
Metal, nails, round, 6.5cm		3

<u>Identification</u>	<u>Raw Material</u>	<u>#</u>
Metal, nails, round, 5.25cm		1
Metal, nails, round, 4.5cm		6
Metal, nails, round, 3.25cm		6
Metal, nails round, broken		10
Metal, nails, round, roofing, 3.25cm		1
Metal, nails, round, roofing, 2.5cm		2
Metal, nails, square, machine cut, 7cm		4
Metal, nails, square, machine cut, 6cm		3
Metal, nails, square, machine cut, 5cm		2
Metal, nails, square, machine cut, 4.5cm		3
Metal, nails, square, machine cut, 4cm		1
Metal, nails, square, machine cut, 2.5cm		2
Metal, nails, square, machine cut, broken		20
Metal, nails, unidentified		13
Metal, screw or bolt, with washer, square head, unidentified		2
Metal, screw, unidentified		1
Metal, unidentified		10
Metal, washer, 3.5cm diameter		1
Metal, wire, unidentified		7
	<u>Total</u>	<u>731</u>

Unit 4

Level 2

<u>Identification</u>	<u>Raw Material</u>	<u>#</u>
Bone, unidentified, unbutchered		2
Glass, amber, container, unidentified, body 1860-present (Fike 1984 in IMACS 1984)		1
Glass, amethyst, container, unidentified, body 1880-1925 (Newman 1970:74)		1
Glass, aqua, container, unidentified, body 1800-1910 (Fike 1984 in IMACS 1984)		8
Glass, clear, container, unidentified, body 1875-present (Fike 1984 in IMACS 1984)		42
Glass, clear, container, unidentified, double ring lip, lip, neck and shoulder 1875-present (Fike 1984 in IMACS 1984)		1
Glass, clear, container, unidentified, embossed, body 1875-present (Fike 1984 in IMACS 1984)		1
Glass, clear, container, unidentified, irregular polygonal base, base and 2/3 body 1875-present (Fike 1984 in IMACS 1984)		1
Glass, clear, container, unidentified, lip 1875-present (Fike 1984 in IMACS 1984)		1
Glass, clear, container, unidentified, orange paint or decal decoration, body 1875-present (Fike 1984 in IMACS 1984)		2
Glass, clear, flat		32
Glass, clear, thin, lamp chimney, rim 1875-present (Fike 1984 in IMACS 1984)		3

<u>Identification</u>	<u>Raw Material</u>	<u>#</u>
Glass, clear, thin, lamp chimney fragment, body (Fike 1984 in IMACS 1984)	1875-present	28
Linoleum		4
Metal, flat, with cloth and copper rivet, 1.5cm wide		1
Metal, nails, round, 7cm		1
Metal, nails, round, 5cm		1
Metal, nails, round, 3.25cm		1
Metal, nails, square, broken		1
Metal, tin can fragments		2
Metal, unidentified		16
Mussell shell		1
Peach pit		1
	<u>Total</u>	<u>152</u>

Unit 4

Level 3

<u>Identification</u>	<u>Raw Material</u>	<u>#</u>
Bone, mandible, rodent		1
Bone, scapula, butchered		1
Bone, unidentified, butchered		3
Bone, unidentified, unbutchered		9
Coal		90
Button, shell, 2 hole		1
Firearms cartridge, 12 ga., base from paper bodied shotshell, embossed "UMC Co Club, No. 12"		1
Glass, amber, container, unidentified, body 1860-present (Fike 1984 in IMACS 1984)		2
Glass, amethyst, container, unidentified, embossed, base 1880-1925 (Newman 1970:74)		1
Glass, amethyst, container, unidentified, body 1880-1925 (Newman 1970:74)		3
Glass, amethyst, container, unidentified, embossed, lip 1880-1925 (Newman 1970:74)		1
Glass, aqua, container, Ball mason jar, embossed "Ball Mason", body pre 1937 (Brantley 1975:30)		1
Glass, aqua, container, Hero mason jar, embossed "T Nov 26, 45", base		1
Glass, aqua, container, unidentified, embossed "Mason's Patent", body 1800-1910 (Fike 1984 in IMACS 1984)		2
Glass, aqua, container, unidentified, body 1800-1910 (Fike 1984 in IMACS 1984)		14
Glass, aqua, flat		60
Glass, aqua, rod, twisted, unidentified 1800-1910 (Fike 1984 in IMACS 1984)		1
Glass, clear, container, Ball jar, embossed "Ball", base 1875-present (Fike 1984 in IMACS 1984)		1

<u>Identification</u>	<u>Raw Material</u>	<u>#</u>
Glass, clear, container, Ball jar, whole, embossed "163 16, 6M, Ball", round body, with associated lid pre 1996 (www.antiquebottles.com/dating.html)		2
Glass, clear, container, ketchup bottle, body 1875-present (Fike 1984 in IMACS 1984)		1
Glass, clear, container, unidentified, base 1875-present (Fike 1984 in IMACS 1984)		1
Glass, clear, container, unidentified, body 1875-present (Fike 1984 in IMACS 1984)		373
Glass, clear, container, unidentified, embossed "Anchorglass", body		1
Glass, clear, container, unidentified, embossed "Duraglass", base 1940-1960s (Hinson 2000)		1
Glass, clear, container, unidentified, embossed "Duraglass", body 1940-1960s (Hinson 2000)		4
Glass, clear, container, unidentified, embossed, base 1875-present (Fike 1984 in IMACS 1984)		10
Glass, clear, container, unidentified, embossed, body 1875-present (Fike 1984 in IMACS 1984)		20
Glass, clear, container, unidentified, external thread, lip 1875-present (Fike 1984 in IMACS 1984)		4
Glass, clear, container, unidentified, double ring, lip 1875-present (Fike 1984 in IMACS 1984)		1
Glass, clear, container, unidentified, lip 1875-present (Fike 1984 in IMACS 1984)		2
Glass, clear, container, unidentified, one side flat, oval base, whole except for neck/lip 1875-present (Fike 1984 in IMACS 1984)		1
Glass, clear, container, unidentified, orange paint or decal decoration, "Thompson", body 1875-present (Fike 1984 in IMACS 1984)		10
Glass, clear, container, unidentified, neck 1875-present (Fike 1984 in IMACS 1984)		1
Glass, clear, container, unidentified, prescription lip 1875-present (Fike 1984 in IMACS 1984)		1
Glass, clear, container, unidentified, snap on type lid, lip 1875-present (Fike 1984 in IMACS 1984)		18
Glass, clear, container, unidentified, thread, neck 1875-present (Fike 1984 in IMACS 1984)		1
Glass, clear, container, unidentified, 2/3 whole, French square body, base embossed "T" 1875-present (Fike 1984 in IMACS 1984)		1
Glass, clear, container, unidentified, 3/4 whole, oval, one side flat, base embossed "M" 1875-present (Fike 1984 in IMACS 1984)		3
Glass, clear, container, whole, ketchup bottle, embossed "12 7, 7, Duraglass, EP 1636", with lid 1940-1960s (Hinson 2000)		1
Glass, clear, flat		163
Glass, clear, magnifying lens, 4cm diameter x 1.25cm thick		1
Glass, clear, thin, lamp chimney, base 1875-present (Fike 1984 in IMACS 1984)		1

<u>Identification</u>	<u>Raw Material</u>	<u>#</u>
Glass, clear, thin, lamp chimney, body 1875-present (Fike 1984 in IMACS 1984)		30
Glass, clear, thin, lamp chimney, rim 1875-present (Fike 1984 in IMACS 1984)		5
Linoleum, unidentified		9
Metal, bar, unidentified, with portion of another bar, joined with rivets or bolts		1
Metal, brass, foot, furniture or ?		1
Metal, copper or brass, round headed furniture tack, soldered on shank		1
Metal, copper, riveted to flat metal, hanging loop for pictures, etc.		2
Metal, gutter fragments		24
Metal, lead, washer from nail		1
Metal, lid, from glass jar, unidentified		7
Metal, nails, round, 3.25cm		4
Metal, nails, round, 3.5cm		3
Metal, nails, round, 3.75cm		3
Metal, nails, round, 4cm		1
Metal, nails, round, 6cm		1
Metal, nails, round, 6.5cm		2
Metal, nails, round, broken		11
Metal, nails, round, with lead washer, 4.5cm		5
Metal, nails, square, machine cut, 3.75cm		1
Metal, nails, square, machine cut, 5cm		3
Metal, nails, square, machine cut, 6.5cm		1
Metal, nails, square, machine cut, 7cm		1
Metal, nails, square, machine cut, 8cm		1
Metal, nails, square, machine cut, broken		21
Metal, nails, unidentified		9
Metal, ring, unidentified, 14cm diameter		5
Metal, saw blade, 5cm wide x 18cm long		1
Metal, eye screw, 4cm		1
Metal, screw, square head, with 2 washers, 8cm		1
Metal, tack, round, 1.25cm		1
Metal, tin can fragments		284
Metal, unidentified		11
Metal, wire, unidentified		14
Mortar		7
Mussell shell, unmodified		1
Rubber, black, heat damaged		7
Rubber, sealing ring from canning jar		1
	<u>Total</u>	<u>1216</u>

Unit 4

Level 4

<u>Identification</u>	<u>Raw Material</u>	<u>#</u>
Bone, unidentified, butchered		1

<u>Identification</u>	<u>Raw Material</u>	<u>#</u>
Bone, unidentified, unbutchered		8
Button, milk glass, opaque, 4 hole		1
Ceramic, ironstone, plain, base 1800-1885 (Majewski and O'Brien 1987:120-23)		1
Ceramic, ironstone, plain, body 1800-1885 (Majewski and O'Brien 1987:120-23)		1
Ceramic, ironstone, plain, rim 1800-1885 (Majewski and O'Brien 1987:120-23)		1
Ceramic, stoneware, buff paste, dark brown lead glaze/no glaze exterior, brown lead glaze interior, body		1
Ceramic, whiteware, polychrome floral motif, body 1840-1860 (Majewski and O'Brien 1987:159)		1
Coal		110
Glass, amber, container, unidentified, body 1860-present (Fike 1984 in IMACS 1984)		1
Glass, amethyst, container, unidentified, body 1880-1925 (Newman 1970:74)		1
Glass, amethyst, container, unidentified, embossed, body 1880-1925 (Newman 1970:74)		1
Glass, aqua, container, mason jar, embossed "0.58", probably "Mason's Patent, Nov. 30. 1858", body 1800-1910 (Fike 1984 in IMACS 1984)		1
Glass, aqua, container, unidentified, base 1800-1910 (Fike 1984 in IMACS 1984)		2
Glass, aqua, container, unidentified, body 1800-1910 (Fike 1984 in IMACS 1984)		8
Glass, aqua, container, unidentified, neck 1800-1910 (Fike 1984 in IMACS 1984)		2
Glass, aqua, container, unidentified, external thread, ground, lip 1800-1910 (Fike 1984 in IMACS 1984)		1
Glass, aqua, flat		77
Glass, clear, container, Ball jar, whole, with metal lid and liquid, round body, base embossed "Ball" pre 1996 (Hinson 2000)		1
Glass, clear, container, ketchup bottle, body 1875-present (Fike 1984 in IMACS 1984)		3
Glass, clear, container, unidentified, base, drinking glass? 1875-present (Fike 1984 in IMACS 1984)		1
Glass, clear, container, unidentified, body 1875-present (Fike 1984 in IMACS 1984)		144
Glass, clear, container, unidentified, embossed, round, base 1800-1910 (Fike 1984 in IMACS 1984)		7
Glass, clear, container, unidentified, embossed, body 1800-1910 (Fike 1984 in IMACS 1984)		14
Glass, clear, container, unidentified, embossed "Duraglass", body 1940-1960s (Hinson 2000)		4
Glass, clear, container, unidentified, embossed, 2/3 whole, dish? 1875-present (Fike 1984 in IMACS 1984)		2
Glass, clear, container, unidentified, external thread, lip 1875-present (Fike 1984 in IMACS 1984)		1
Glass, clear, container, unidentified, prescription, lip/neck 1875-present (Fike 1984 in IMACS 1984)		1

<u>Identification</u>	<u>Raw Material</u>	<u>#</u>
Glass, clear, container, unidentified, snap on type lid, lip 1875-present (Fike 1984 in IMACS 1984)		16
Glass, clear, container, unidentified, 2/3 whole, snap on type lid, round body 1875-present (Fike 1984 in IMACS 1984)		1
Glass, clear, container, unidentified, whole, embossed "Duraglass", round body, snap on type lid 1940-1960s (Hinson 2000)		2
Glass, clear, container, unidentified, whole, round body, external thread, base embossed "K6738, 1 4, 2" 1875-present (Fike 1984 in IMACS 1984)		1
Glass, clear, container, whole, ketchup bottle, with lid, round body, faceted sides, base embossed "Duraglass E1617" 1940-1960s (Hinson 2000)		1
Glass, clear, flat		4
Glass, clear, thin, lamp chimney, base 1875-present (Fike 1984 in IMACS 1984)		1
Glass, clear, thin, lamp chimney, body 1875-present (Fike 1984 in IMACS 1984)		56
Glass, clear, thin, lamp chimney, rim 1875-present (Fike 1984 in IMACS 1984)		3
Glass, clear, tumbler, base 1875-present (Fike 1984 in IMACS 1984)		1
Glass, clear, tumbler, embossed, unidentified, 3/4 whole 1875-present (Fike 1984 in IMACS 1984)		1
Linoleum, unidentified		8
Metal, gutter fragments		13
Metal, handle from sheet metal frying pan		1
Metal, nails, round, 6.5cm		2
Metal, nails, round, broken		1
Metal, nails, round, roofing, 3cm		2
Metal, nails, round, with lead washer, 5cm		2
Metal, nails, square, machine cut, 4cm		1
Metal, nails, square, machine cut, 5cm		1
Metal, nails, square, machine cut, 7cm		1
Metal, nails, square, machine cut, 8cm		1
Metal, nails, square, machine cut, broken		8
Metal, nails, unidentified		30
Metal, screw, standard head, 3.5cm		1
Metal, screw on lid, unidentified		3
Metal, spike, square, machine cut, 11cm		2
Metal, tin can fragments		39
Metal, unidentified		3
Metal, washing machine ringer height adjusting screw, cast iron, with collared square nut		1
Metal, wire, unidentified		3
Rubber, black, unidentified, heat damaged		1
Rubber, sealing ring from canning jar		3
Shoe heel, stacked layers of leather		1
Unmodified flake	Heat damaged Laurel	1
	<u>Total</u>	<u>514</u>

Unit 4
Level 5

<u>Identification</u>	<u>Raw Material</u>	<u>#</u>
Coal		20
Glass, amethyst, container, unidentified, body 1880-1925 (Newman 1970:74)		1
Glass, aqua, flat		1
Glass, clear, container, unidentified, body 1875-present (Fike 1984 in IMACS 1984)		1
Glass, clear, thin, lamp chimney, body 1875-present (Fike 1984 in IMACS 1984)		5
Glass, clear, thin, lamp chimney, rim 1875-present (Fike 1984 in IMACS 1984)		1
Metal, nails, unidentified		1
	<u>Total</u>	<u>12</u>

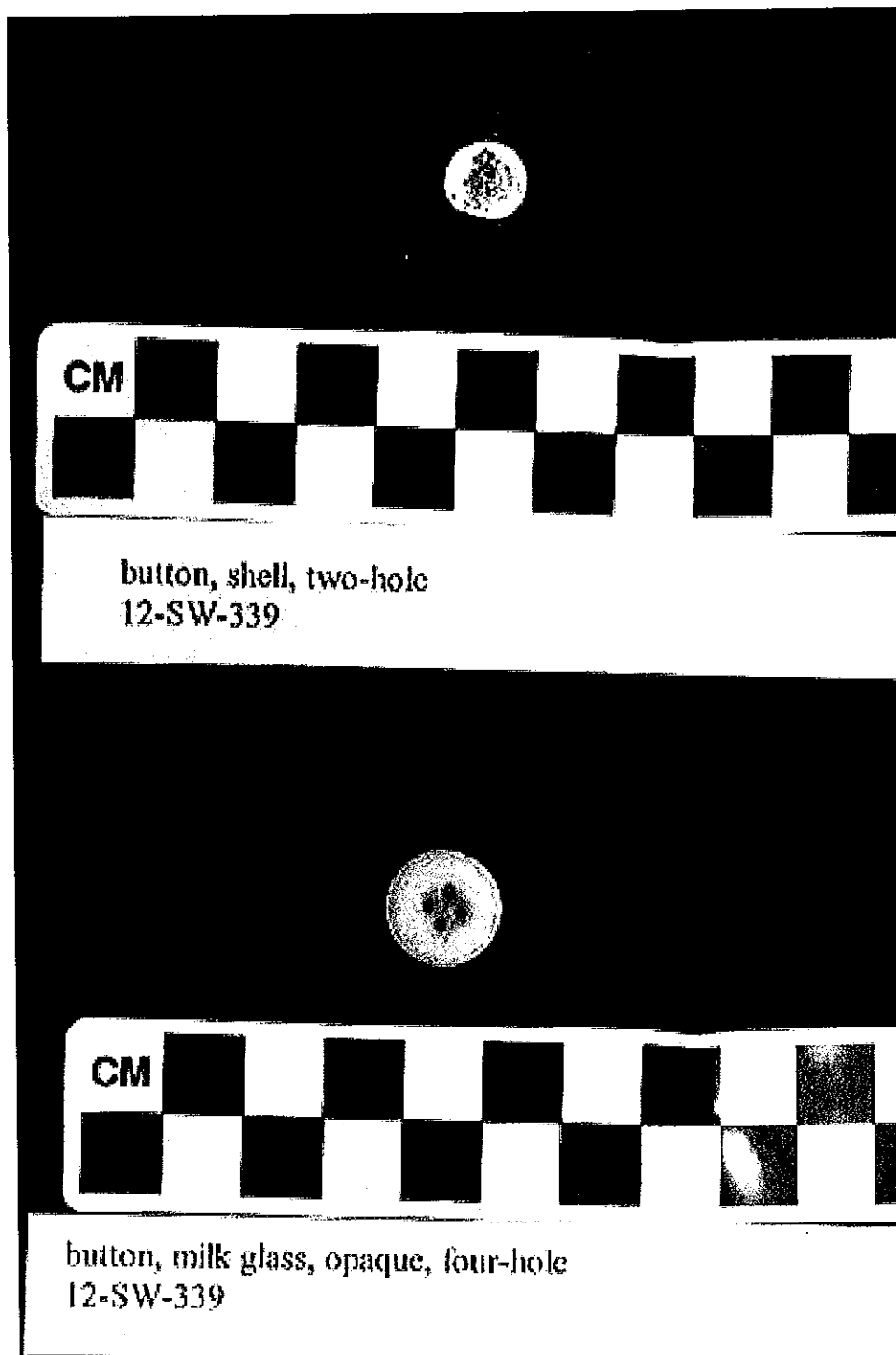
Unit 4
Unprovenienced

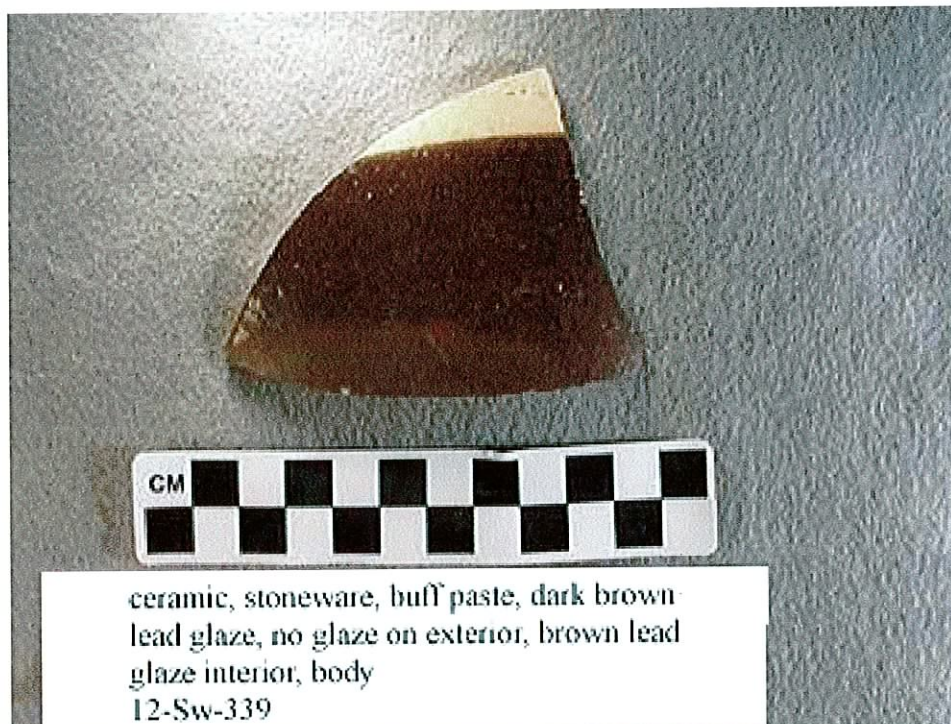
<u>Identification</u>	<u>Raw Material</u>	<u>#</u>
Bone, mandible, rodent		6
Bone, unidentified, butchered		11
Bone, unidentified, unbutchered		19
Ceramic, ironstone, plain, base 1800-1885 (Majewski and O'Brien 1987:120-23)		1
Ceramic, ironstone, plain, rim 1800-1885 (Majewski and O'Brien 1987:120-23)		3
Ceramic, porcelain, polychrome decal decoration, unidentified, base		1
Ceramic, stoneware, buff paste, brown glaze/no glaze exterior, dark brown glaze interior, body/ear		1
Ceramic, stoneware, buff paste, brown glaze exterior, brown glaze interior, body		1
Ceramic, stoneware, buff paste, maroon/brown glaze exterior/interior, round, base		1
Ceramic, whiteware, hand painted brown floral motif, border line interior/exterior, base to rim, approximately 30% whole 1820-present (ODOT 1991:177)		1
Ceramic, whiteware, plain, body 1820-present (ODOT 1991:177)		2
Firearms cartridge, 12 ga., base embossed UMC Co Club, No. 12", base of paper bodied shotshell		1
Glass, amber, container, unidentified, base and body, French square 1860-present (Fike 1984 in IMACS 1984)		1
Glass, amber, container, unidentified, round body, base embossed "CCC Co, 8", base and body 1860-present (ODOT 1991:177)		1
Glass, amber, container, unidentified, body 1860-present (ODOT 1991:177)		10
Glass, amethyst, container, unidentified, body 1880-1925 (Newman 1970:74)		1
Glass, amethyst, container, unidentified, double ring, lip 1880-1925 (Newman 1970:74)		1
Glass, aqua, container, unidentified, base 1800-1910 (Fike 1984 in IMACS 1984)		2

<u>Identification</u>	<u>Raw Material</u>	<u>#</u>
Glass, aqua, container, unidentified, embossed "2", base 1800-1910 (Fike 1984 in IMACS 1984)		1
Glass, aqua, container, unidentified, embossed "WO, 79", base 1800-1910 (Fike 1984 in IMACS 1984)		1
Glass, aqua, container, unidentified, embossed, body 1800-1910 (Fike 1984 in IMACS 1984)		1
Glass, aqua, container, unidentified, bead, lip 1800-1910 (Fike 1984 in IMACS 1984)		1
Glass, aqua, container, unidentified, body 1800-1910 (Fike 1984 in IMACS 1984)		47
Glass, aqua, flat		45
Glass, aqua, rods, twisted, unidentified 1800-1910 (Fike 1984 in IMACS 1984)		2
Glass, clear, container, unidentified, body 1875-present (Fike 1984 in IMACS 1984)		104
Glass, clear, container, unidentified, embossed, base 1875-present (Fike 1984 in IMACS 1984)		2
Glass, clear, container, unidentified, embossed, body 1875-present (Fike 1984 in IMACS 1984)		11
Glass, clear, container, unidentified, embossed, rim 1875-present (Fike 1984 in IMACS 1984)		1
Glass, clear, container, unidentified, flat or patent, lip 1875-present (Fike 1984 in IMACS 1984)		1
Glass, clear, container, unidentified, orange paint or decal, body 1875-present (Fike 1984 in IMACS 1984)		1
Glass, clear, container, unidentified, oval body, base 1875-present (Fike 1984 in IMACS 1984)		1
Glass, clear, container, unidentified, snap on type lid, lip 1875-present (Fike 1984 in IMACS 1984)		2
Glass, clear, container, unidentified, whole, oval body with flat sides, double ring lip, 15.5cm high x 7.5cm wide x 3cm thick 1875-present (Fike 1984 in IMACS 1984)		1
Glass, clear, container, unidentified, whole, square body, flat or patent lip, embossed "Perine Guyot & CIE" on one side, "JF" on another 1875-present (Fike 1984 in IMACS 1984)		1
Glass, clear, flat		15
Glass, clear, thin, lamp chimney, base 1875-present (Fike 1984 in IMACS 1984)		9
Glass, clear, thin, lamp chimney, body 1875-present (Fike 1984 in IMACS 1984)		287
Glass, clear, thin, lamp chimney, rim 1875-present (Fike 1984 in IMACS 1984)		6
Glass, clear, tumbler, lip 1875-present (Fike 1984 in IMACS 1984)		1
Glass, clear, tumbler, base, unidentified 1875-present (Fike 1984 in IMACS 1984)		3
Leather, black, unidentified		1
Linoleum, unidentified		26
Metal, aluminum foil		3
Metal, bar, unidentified, 1cm diameter x 24cm long		1

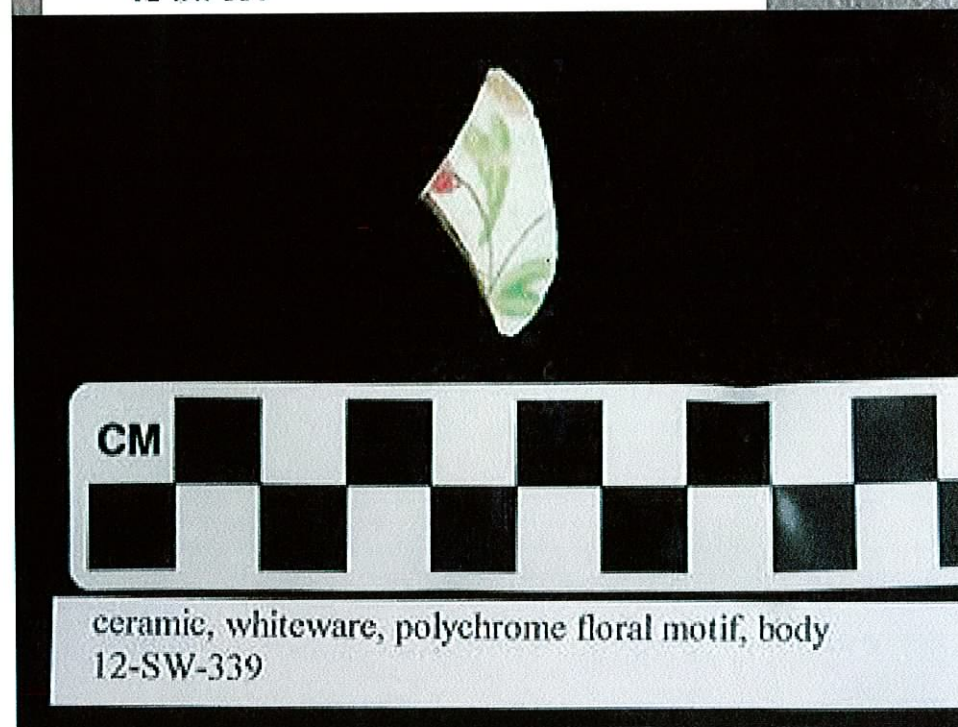
<u>Identification</u>	<u>Raw Material</u>	<u>#</u>
Metal, bolt, 9cm		1
Metal, bolt and nut, 15cm		1
Metal, cast iron, unidentified		1
Metal, chromed, picture hooks with attached metal		6
Metal, eye screw		1
Metal, flat, bar, unidentified, approx. 1.25cm wide		4
Metal, grommet		1
Metal, lid fragments, unidentified		2
Metal, nails, round, 8cm		1
Metal, nails, round, 3.25cm		2
Metal, nails, round, broken		1
Metal, nails, square, broken		21
Metal, nails, square, machine cut, 6.5cm		1
Metal, nails, square, machine cut, 4cm		2
Metal, nails, unidentified		42
Metal, pewter, kitchen utensil handle		1
Metal, pewter, unidentified		1
Metal, tin can fragments		50
Metal, triangular file		1
Metal, wire, handle, unidentified		1
Metal, unidentified		10
Rubber, black, heat damaged		3
Shoe fragments, unidentified		5
	<u>Total</u>	<u>798</u>

Appendix 2.
Artifact Photographs

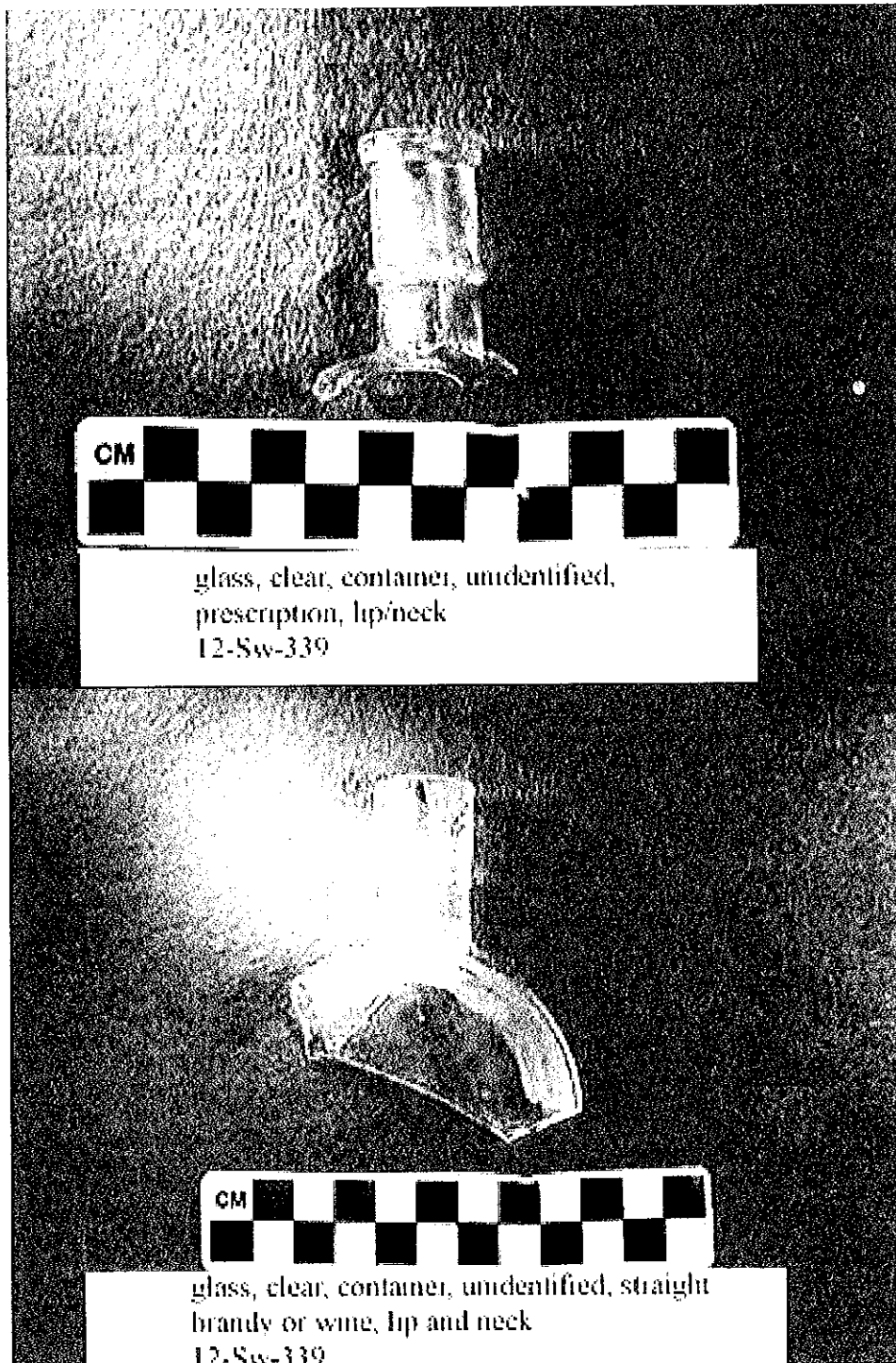


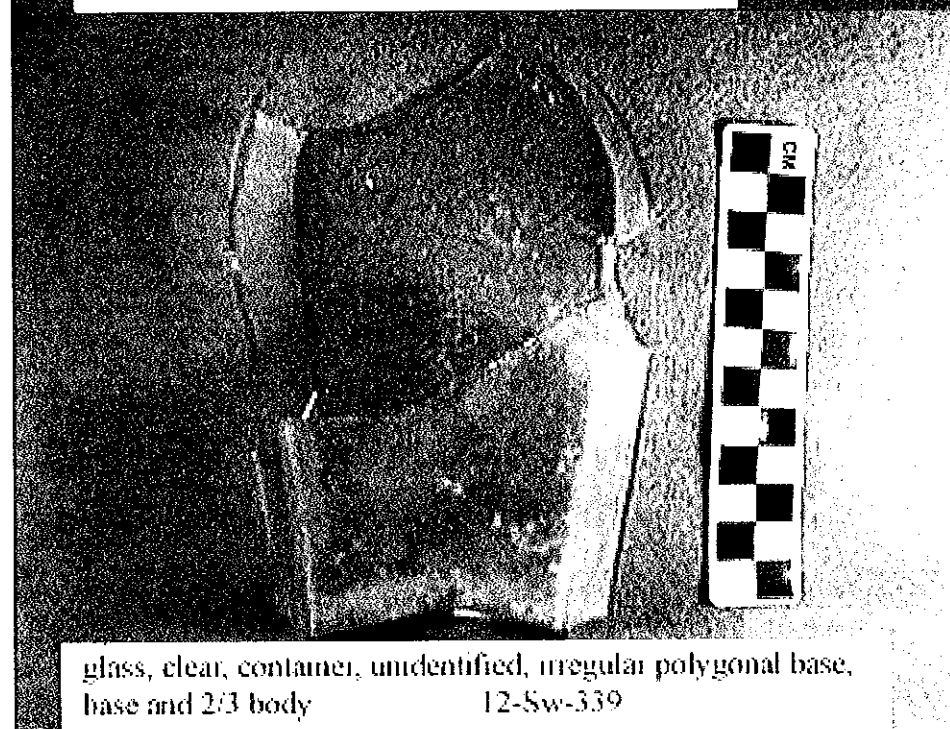
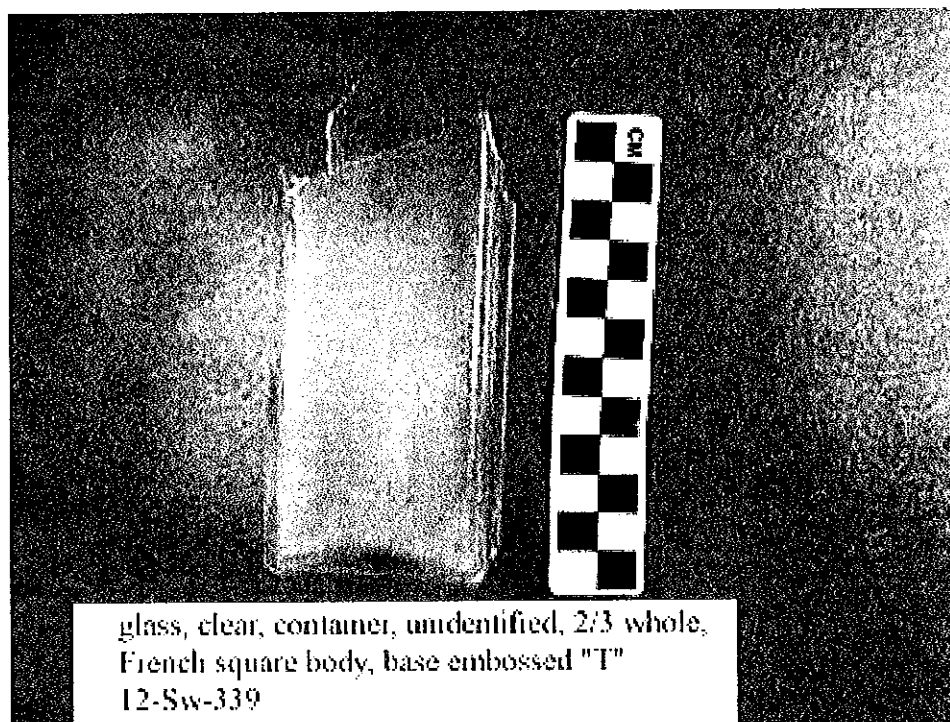


ceramic, stoneware, buff paste, dark brown
lead glaze, no glaze on exterior, brown lead
glaze interior, body
12-Sw-339



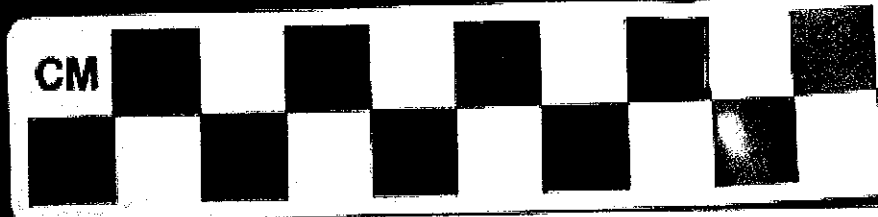
ceramic, whiteware, polychrome floral motif, body
12-SW-339





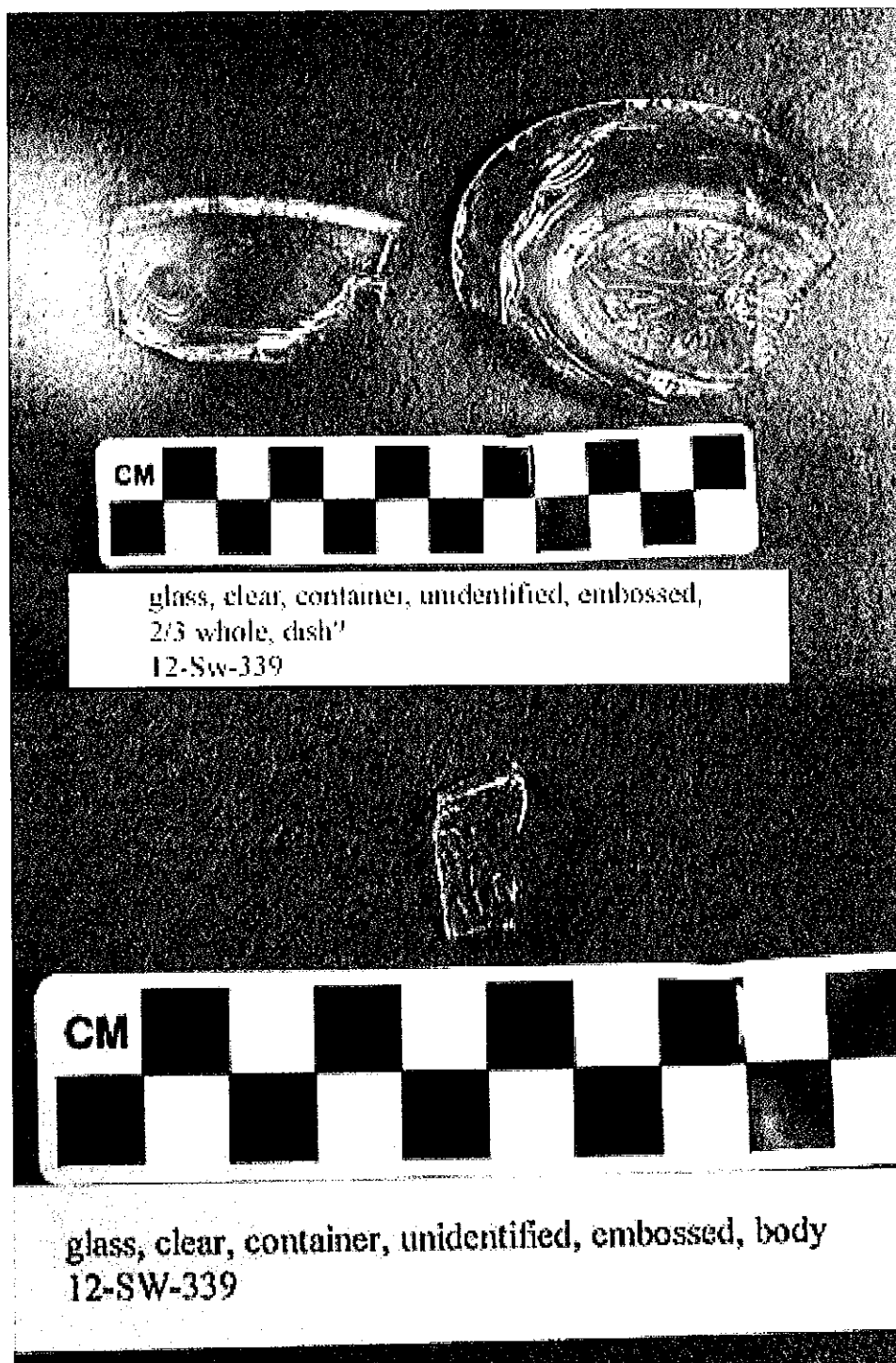


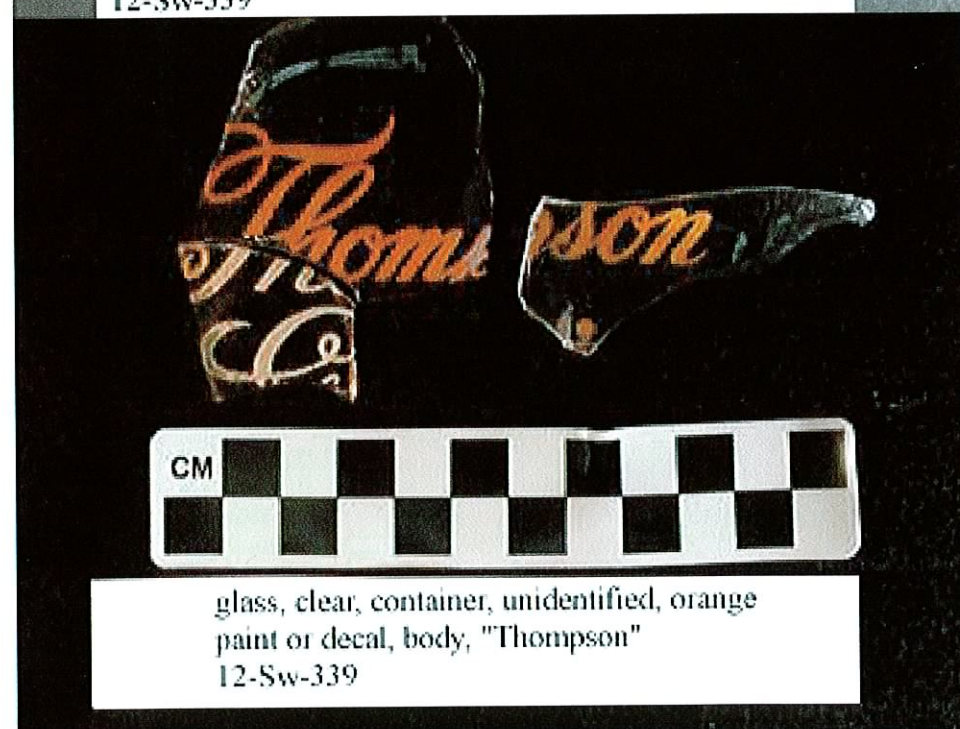
glass, clear, container, unidentified, one side
flat, oval base, whole except for neck/lip
12-Sw-339

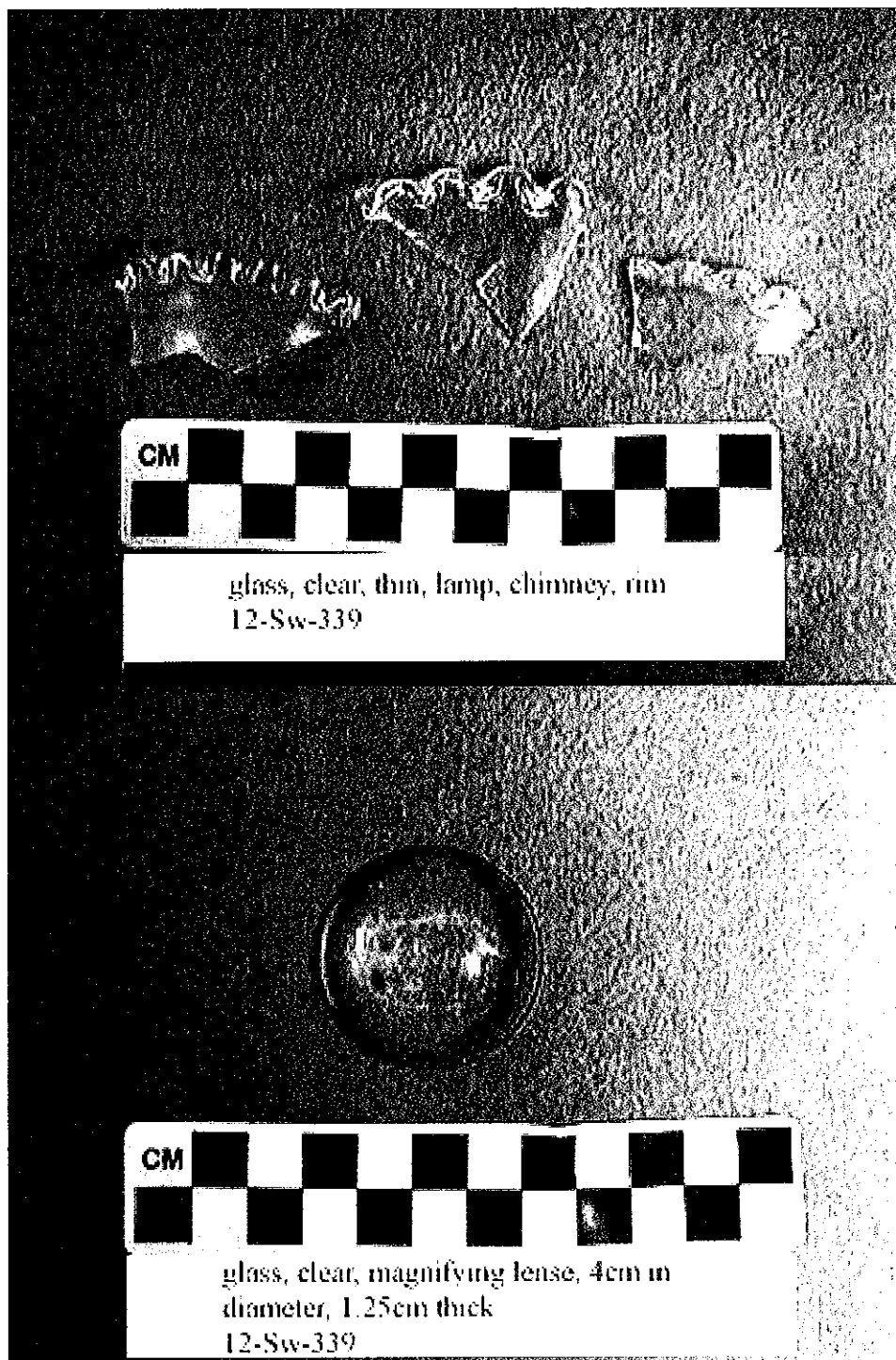


glass, amethyst, container, unidentified, embossed, body
12-SW-339











metal, buckle, 2.25 cm by 2.5 cm
12-SW-339



metal, washing machine wringer height adjusting
screw, cast iron with collared square nut
12-Sw-339

Appendix 3.
Artifact groupings by level

Unit 1 Level 1	Category	Includes	Number Present	Percent Represented
	Kitchen Group	Ceramic Vessels Glass Vessels Metal Vessels Utensils Pharmaceuticals Kitchen Ware	10 990 0 0 0 0	95%
	Architectural Group	Window Glass Nails Spikes Construction Materials Door Parts	17 14 0 2 0 0	3%
	Furniture Group	Furniture Hardware	0	0%
	Arms Group	Projectiles Cartridges Firearm Parts	0 0 0	0%
	Clothing Group	Buckles Buttons Sewing Material Grommets Scissors Glass Beads	0 0 0 1 0 0	>1%
	Personal Group	Coins Keys Jewelry Misc.	0 0 0 0	0%
	Tobacco Group	Pipes Tobacco Related	0 0	0%
	Bone Group	Faunal	0	0%
	Activities Group	Tools Farm Tools Fishing Gear Stable and Barn Ethnobotanical Misc. Hardware Toys Other	0 0 0 0 0 12 0 2	1%
	Miscellaneous	Unidentified	1	>1%
	Totals		1049	100%

Unit 1 Level 2	Category	Includes	Number Present	Percent Represented
	Kitchen Group	Ceramic Vessels Glass Vessels Metal Vessels Utensils Pharmaceuticals Kitchen Ware	0 219 0 0 0 0	97%
	Architectural Group	Window Glass Nails Spikes Construction Materials Door Parts	3 2 0 0 0 0	2%
	Furniture Group	Furniture Hardware	0	0%
	Arms Group	Projectiles Cartridges Firearm Parts	0 0 0	0%
	Clothing Group	Buckles Buttons Sewing Material Grommets Scissors Glass Beads	0 1 0 0 0 0	>1%
	Personal Group	Coins Keys Jewelry Misc.	0 0 0 0	0%
	Tobacco Group	Pipes Tobacco Related	0 0	0%
	Bone Group	Faunal	0	0%
	Activities Group	Tools Farm Tools Fishing Gear Stable and Barn Ethnobotanical Misc. Hardware Toys Other	0 0 0 0 0 0 0 1	>1%
	Miscellaneous	Unidentified	0	0%
	Totals		226	100%

Unit 1 Level 3	Category	Includes	Number Present	Percent Represented
	Kitchen Group	Ceramic Vessels Glass Vessels Metal Vessels Utensils Pharmaceuticals Kitchen Ware	0 4 0 0 0 0	100%
	Architectural Group	Window Glass Nails Spikes Construction Materials Door Parts	0 0 0 0 0 0	0%
	Furniture Group	Furniture Hardware	0	0%
	Arms Group	Projectiles Cartridges Firearm Parts	0 0 0	0%
	Clothing Group	Buckles Buttons Sewing Material Grommets Scissors Glass Beads	0 0 0 0 0 0	0%
	Personal Group	Coins Keys Jewelry Misc.	0 0 0 0	0%
	Tobacco Group	Pipes Tobacco Related	0 0	0%
	Bone Group	Faunal	0	0%
	Activities Group	Tools Farm Tools Fishing Gear Stable and Barn Ethnobotanical Misc. Hardware Toys Other	0 0 0 0 0 0 0 0	0%
	Miscellaneous	Unidentified	0	0%
	Totals		4	100%

Unit 1 Level 4	Category	Includes	Number Present	Percent Represented
	Kitchen Group	Ceramic Vessels Glass Vessels Metal Vessels Utensils Pharmaceuticals Kitchen Ware	0 0 0 0 0 0	0%
	Architectural Group	Window Glass Nails Spikes Construction Materials Door Parts	0 0 0 1 0 0	100%
	Furniture Group	Furniture Hardware	0	0%
	Arms Group	Projectiles Cartridges Firearm Parts	0 0 0	0%
	Clothing Group	Buckles Buttons Sewing Material Grommets Scissors Glass Beads	0 0 0 0 0 0	0%
	Personal Group	Coins Keys Jewelry Misc.	0 0 0 0	0%
	Tobacco Group	Pipes Tobacco Related	0 0	0%
	Bone Group	Faunal	0	0%
	Activities Group	Tools Farm Tools Fishing Gear Stable and Barn Ethnobotanical Misc. Hardware Toys Other	0 0 0 0 0 0 0 0	0%
	Miscellaneous	Unidentified	0	0%
	Totals		1	100%

Unit 1 Surface/Unprov	Category	Includes	Number Present	Percent Represented
	Kitchen Group	Ceramic Vessels Glass Vessels Metal Vessels Utensils Pharmaceuticals Kitchen Ware	2 138 8 0 0 0	87%
	Architectural Group	Window Glass Nails Spikes Construction Materials Door Parts	0 0 0 6 0 0	3%
	Furniture Group	Furniture Hardware	0	0%
	Arms Group	Projectiles Cartridges Firearm Parts	0 0 0	0%
	Clothing Group	Buckles Buttons Sewing Material Grommets Scissors Glass Beads	0 0 0 0 0 0	0%
	Personal Group	Coins Keys Jewelry Misc.	0 0 0 0	0%
	Tobacco Group	Pipes Tobacco Related	0 0	0%
	Bone Group	Faunal	0	0%
	Activities Group	Tools Farm Tools Fishing Gear Stable and Barn Ethnobotanical Misc. Hardware Toys Other	0 0 0 0 0 1 0 14	9%
	Miscellaneous	Unidentified	2	1%
	Totals		171	100%

Unit 2 Level 1	Category	Includes	Number Present	Percent Represented
	Kitchen Group	Ceramic Vessels Glass Vessels Metal Vessels Utensils Pharmaceuticals Kitchen Ware	1 3 0 0 0 3	14%
	Architectural Group	Window Glass Nails Spikes Construction Materials Door Parts	0 23 0 0 0 3	52%
	Furniture Group	Furniture Hardware	0	0%
	Arms Group	Projectiles Cartridges Firearm Parts	0 0 0	0%
	Clothing Group	Buckles Buttons Sewing Material Grommets Scissors Glass Beads	0 0 0 0 0 0	0%
	Personal Group	Coins Keys Jewelry Misc.	0 0 0 0	0%
	Tobacco Group	Pipes Tobacco Related	0 0	0%
	Bone Group	Faunal	0	0%
	Activities Group	Tools Farm Tools Fishing Gear Stable and Barn Ethnobotanical Misc. Hardware Toys Other	0 1 0 0 0 0 0 0	2%
	Miscellaneous	Unidentified	16	32%
	Totals		50	100%

Unit 2 Level 2	Category	Includes	Number Present	Percent Represented
	Kitchen Group	Ceramic Vessels Glass Vessels Metal Vessels Utensils Pharmaceuticals Kitchen Ware	0 1 0 0 0 0	>1%
	Architectural Group	Window Glass Nails Spikes Construction Materials Door Parts	2 33 0 1 0 0	20%
	Furniture Group	Furniture Hardware	0	0%
	Arms Group	Projectiles Cartridges Firearm Parts	0 0 0	0%
	Clothing Group	Buckles Buttons Sewing Material Grommets Scissors Glass Beads	0 0 0 0 0 0	0%
	Personal Group	Coins Keys Jewelry Misc.	0 0 0 0	0%
	Tobacco Group	Pipes Tobacco Related	0 0	0%
	Bone Group	Faunal	0	0%
	Activities Group	Tools Farm Tools Fishing Gear Stable and Barn Ethnobotanical Misc. Hardware Toys Other	0 0 0 0 0 3 0 9	6%
	Miscellaneous	Unidentified	135	73%
	Totals		184	100%

Unit 2 Level 3	Category	Includes	Number Present	Percent Represented
	Kitchen Group	Ceramic Vessels Glass Vessels Metal Vessels Utensils Pharmaceuticals Kitchen Ware	5 2 0 0 0 0	16%
	Architectural Group	Window Glass Nails Spikes Construction Materials Door Parts	3 24 0 0 0 0	60%
	Furniture Group	Furniture Hardware	0	0
	Arms Group	Projectiles Cartridges Firearm Parts	0 0 0	0
	Clothing Group	Buckles Buttons Sewing Material Grommets Scissors Glass Beads	0 0 0 0 0 0	0
	Personal Group	Coins Keys Jewelry Misc.	0 0 0 0	0
	Tobacco Group	Pipes Tobacco Related	0 0	0
	Bone Group	Faunal	8	18%
	Activities Group	Tools Farm Tools Fishing Gear Stable and Barn Ethnobotanical Misc. Hardware Toys Other	0 0 0 0 0 0 0 1	2%
	Miscellaneous	Unidentified	2	4%
	Totals		45	100%

Unit 2 Level 4	Category	Includes	Number Present	Percent Represented
	Kitchen Group	Ceramic Vessels Glass Vessels Metal Vessels Utensils Pharmaceuticals Kitchen Ware	0 0 0 0 0 0	0%
	Architectural Group	Window Glass Nails Spikes Construction Materials Door Parts	0 1 0 0 0 0	100%
	Furniture Group	Furniture Hardware	0	0%
	Arms Group	Projectiles Cartridges Firearm Parts	0 0 0	0%
	Clothing Group	Buckles Buttons Sewing Material Grommets Scissors Glass Beads	0 0 0 0 0 0	0%
	Personal Group	Coins Keys Jewelry Misc.	0 0 0 0	0%
	Tobacco Group	Pipes Tobacco Related	0 0	0%
	Bone Group	Faunal	0	0%
	Activities Group	Tools Farm Tools Fishing Gear Stable and Barn Ethnobotanical Misc. Hardware Toys Other	0 0 0 0 0 0 0 0	0%
	Miscellaneous	Unidentified	0	0%
	Totals		1	100%

Unit 2 Surface/Unprov	Category	Includes	Number Present	Percent Represented
	Kitchen Group	Ceramic Vessels Glass Vessels Metal Vessels Utensils Pharmaceuticals Kitchen Ware	0 0 0 0 0 0	0%
	Architectural Group	Window Glass Nails Spikes Construction Materials Door Parts	0 1 0 0 0 0	3%
	Furniture Group	Furniture Hardware	0	0%
	Arms Group	Projectiles Cartridges Firearm Parts	0 0 0	0%
	Clothing Group	Buckles Buttons Sewing Material Grommets Scissors Glass Beads	0 0 0 0 0 0	0%
	Personal Group	Coins Keys Jewelry Misc.	0 0 0 0	0%
	Tobacco Group	Pipes Tobacco Related	0 0	0%
	Bone Group	Faunal	0	0%
	Activities Group	Tools Farm Tools Fishing Gear Stable and Barn Ethnobotanical Misc. Hardware Toys Other	0 0 0 0 0 0 0 0	0%
	Miscellaneous	Unidentified	32	97%
	Totals		33	100%

Unit 3 Level 1	Category	Includes	Number Present	Percent Represented
	Kitchen Group	Ceramic Vessels Glass Vessels Metal Vessels Utensils Pharmaceuticals Kitchen Ware	1 31 4 0 0 0	13%
	Architectural Group	Window Glass Nails Spikes Construction Materials Door Parts	24 97 5 47 0 0	64%
	Furniture Group	Furniture Hardware	0	0%
	Arms Group	Projectiles Cartridges Firearm Parts	0 0 0	0%
	Clothing Group	Buckles Buttons Sewing Material Grommets Scissors Glass Beads	1 0 0 1 0 0	1%
	Personal Group	Coins Keys Jewelry Misc.	0 0 0 2	1%
	Tobacco Group	Pipes Tobacco Related	0 0	0%
	Bone Group	Faunal	47	17%
	Activities Group	Tools Farm Tools Fishing Gear Stable and Barn Ethnobotanical Misc. Hardware Toys Other	0 0 0 0 0 4 0 0	1%
	Miscellaneous	Unidentified	8	3%
	Totals		272	100%

Unit 3 Level 2	Category	Includes	Number Present	Percent Represented
	Kitchen Group	Ceramic Vessels Glass Vessels Metal Vessels Utensils Pharmaceuticals Kitchen Ware	5 6 15 0 0 0	33%
	Architectural Group	Window Glass Nails Spikes Construction Materials Door Parts	12 31 0 1 0 0	57%
	Furniture Group	Furniture Hardware	0	0%
	Arms Group	Projectiles Cartridges Firearm Parts	0 1 0	1%
	Clothing Group	Buckles Buttons Sewing Material Grommets Scissors Glass Beads	0 1 1 0 0 0	3%
	Personal Group	Coins Keys Jewelry Misc.	0 0 0 0	0%
	Tobacco Group	Pipes Tobacco Related	0 0	0%
	Bone Group	Faunal	4	5%
	Activities Group	Tools Farm Tools Fishing Gear Stable and Barn Ethnobotanical Misc. Hardware Toys Other	0 0 0 0 0 0 0 1	1%
	Miscellaneous	Unidentified	0	0%
	Totals		78	100%

Unit3 Level 3	Category	Includes	Number Present	Percent Represented
	Kitchen Group	Ceramic Vessels Glass Vessels Metal Vessels Utensils Pharmaceuticals Kitchen Ware	1 3 0 0 0 0	17%
	Architectural Group	Window Glass Nails Spikes Construction Materials Door Parts	6 10 0 0 0 0	67%
	Furniture Group	Furniture Hardware	0	0%
	Arms Group	Projectiles Cartridges Firearm Parts	0 0 0	0%
	Clothing Group	Buckles Buttons Sewing Material Grommets Scissors Glass Beads	0 1 0 0 0 0	4%
	Personal Group	Coins Keys Jewelry Misc.	0 0 0 0	0%
	Tobacco Group	Pipes Tobacco Related	0 0	0%
	Bone Group	Faunal	0	0%
	Activities Group	Tools Farm Tools Fishing Gear Stable and Barn Ethnobotanical Misc. Hardware Toys Other	0 0 0 0 0 0 0 1	4%
	Miscellaneous	Unidentified	2	8%
	Totals		24	100%

Unit 3 Level 4	Category	Includes	Number Present	Percent Represented
	Kitchen Group	Ceramic Vessels Glass Vessels Metal Vessels Utensils Pharmaceuticals Kitchen Ware	0 2 0 0 0 0	50%
	Architectural Group	Window Glass Nails Spikes Construction Materials Door Parts	2 0 0 0 0 0	50%
	Furniture Group	Furniture Hardware	0	0%
	Arms Group	Projectiles Cartridges Firearm Parts	0 0 0	0%
	Clothing Group	Buckles Buttons Sewing Material Grommets Scissors Glass Beads	0 0 0 0 0 0	0%
	Personal Group	Coins Keys Jewelry Misc.	0 0 0 0	0%
	Tobacco Group	Pipes Tobacco Related	0 0	0%
	Bone Group	Faunal	0	0%
	Activities Group	Tools Farm Tools Fishing Gear Stable and Barn Ethnobotanical Misc. Hardware Toys Other	0 0 0 0 0 0 0 0	0%
	Miscellaneous	Unidentified	0	0%
	Totals		4	100%

Unit 3 surface/unprov.	Category	Includes	Number Present	Percent Represented
	Kitchen Group	Ceramic Vessels Glass Vessels Metal Vessels Utensils Pharmaceuticals Kitchen Ware	1 29 10 0 0 0	30%
	Architectural Group	Window Glass Nails Spikes Construction Materials Door Parts	33 40 0 14 0 0	66%
	Furniture Group	Furniture Hardware	0	0%
	Arms Group	Projectiles Cartridges Firearm Parts	0 0 0	0%
	Clothing Group	Buckles Buttons Sewing Material Grommets Scissors Glass Beads	0 0 0 0 0 0	0%
	Personal Group	Coins Keys Jewelry Misc.	0 0 0 0	0%
	Tobacco Group	Pipes Tobacco Related	0 0	0%
	Bone Group	Faunal	3	2%
	Activities Group	Tools Farm Tools Fishing Gear Stable and Barn Ethnobotanical Misc. Hardware Toys Other	0 0 0 0 0 0 0 0	0%
	Miscellaneous	Unidentified	3	2%
	Totals		133	100%

Unit 4 Level 1	Category	Includes	Number Present	Percent Represented
	Kitchen Group	Ceramic Vessels Glass Vessels Metal Vessels Utensils Pharmaceuticals Kitchen Ware	68 0 0 0 0 0	9%
	Architectural Group	Window Glass Nails Spikes Construction Materials Door Parts	35 83 0 305 0 0	59%
	Furniture Group	Furniture Hardware	0	0%
	Arms Group	Projectiles Cartridges Firearm Parts	0 0 0	0%
	Clothing Group	Buckles Buttons Sewing Material Grommets Scissors Glass Beads	1 0 0 0 0 0	>1%
	Personal Group	Coins Keys Jewelry Misc.	0 0 0 0	0%
	Tobacco Group	Pipes Tobacco Related	0 0	0%
	Bone Group	Faunal	1	>1%
	Activities Group	Tools Farm Tools Fishing Gear Stable and Barn Ethnobotanical Misc. Hardware Toys Other	0 0 0 0 0 11 0 22	4%
	Miscellaneous	Unidentified	195	27%
	Totals		721	100%

Unit 4 Level 2	Category	Includes	Number Present	Percent Represented
	Kitchen Group	Ceramic Vessels Glass Vessels Metal Vessels Utensils Pharmaceuticals Kitchen Ware	0 58 2 0 0 0	39%
	Architectural Group	Window Glass Nails Spikes Construction Materials Door Parts	32 4 0 4 0 0	26%
	Furniture Group	Furniture Hardware	0	0%
	Arms Group	Projectiles Cartridges Firearm Parts	0 0 0	0%
	Clothing Group	Buckles Buttons Sewing Material Grommets Scissors Glass Beads	0 0 0 0 0 0	0%
	Personal Group	Coins Keys Jewelry Misc.	0 0 0 0	0%
	Tobacco Group	Pipes Tobacco Related	0 0	0%
	Bone Group	Faunal	3	2%
	Activities Group	Tools Farm Tools Fishing Gear Stable and Barn Ethnobotanical Misc. Hardware Toys Other	0 0 0 0 1 1 0 31	22%
	Miscellaneous	Unidentified	16	11%
	Totals		152	100%

Unit 4 Level 3	Category	Includes	Number Present	Percent Represented
	Kitchen Group	Ceramic Vessels Glass Vessels Metal Vessels Utensils Pharmaceuticals Kitchen Ware	0 483 284 0 0 8	65%
	Architectural Group	Window Glass Nails Spikes Construction Materials Door Parts	123 67 0 40 0 0	19%
	Furniture Group	Furniture Hardware	2	>1%
	Arms Group	Projectiles Cartridges Firearm Parts	0 1 0	>1%
	Clothing Group	Buckles Buttons Sewing Material Grommets Scissors Glass Beads	0 1 0 0 0 0	>1%
	Personal Group	Coins Keys Jewelry Misc.	0 0 0 0	0%
	Tobacco Group	Pipes Tobacco Related	0 0	0%
	Bone Group	Faunal	15	1%
	Activities Group	Tools Farm Tools Fishing Gear Stable and Barn Ethnobotanical Misc. Hardware Toys Other	1 0 0 0 0 17 0 130	12%
	Miscellaneous	Unidentified	24	2%
	Totals		1196	100%

Unit 4 Level 4	Category	Includes	Number Present	Percent Represented
	Kitchen Group	Ceramic Vessels Glass Vessels Metal Vessels Utensils Pharmaceuticals Kitchen Ware	5 218 39 0 0 7	44%
	Architectural Group	Window Glass Nails Spikes Construction Materials Door Parts	81 49 2 21 0 0	25%
	Furniture Group	Furniture Hardware	0	0%
	Arms Group	Projectiles Cartridges Firearm Parts	0 0 0	0%
	Clothing Group	Buckles Buttons Sewing Material Grommets Scissors Glass Beads	0 0 0 0 0 0	0%
	Personal Group	Coins Keys Jewelry Misc.	0 0 0 1	>1%
	Tobacco Group	Pipes Tobacco Related	0 0	0%
	Bone Group	Faunal	9	1%
	Activities Group	Tools Farm Tools Fishing Gear Stable and Barn Ethnobotanical Misc. Hardware Toys Other	0 0 0 0 0 4 0 171	29%
	Miscellaneous	Unidentified	4	>1%
	Totals		611	100%

Unit 4 Level 5	Category	Includes	Number Present	Percent Represented
	Kitchen Group	Ceramic Vessels Glass Vessels Metal Vessels Utensils Pharmaceuticals Kitchen Ware	0 2 0 0 0 0	6.5%
	Architectural Group	Window Glass Nails Spikes Construction Materials Door Parts	1 1 0 0 0 0	6.5%
	Furniture Group	Furniture Hardware	0	0%
	Arms Group	Projectiles Cartridges Firearm Parts	0 0 0	0%
	Clothing Group	Buckles Buttons Sewing Material Grommets Scissors Glass Beads	0 0 0 0 0 0	0%
	Personal Group	Coins Keys Jewelry Misc.	0 0 0 0	0%
	Tobacco Group	Pipes Tobacco Related	0 0	0%
	Bone Group	Faunal	0	0%
	Activities Group	Tools Farm Tools Fishing Gear Stable and Barn Ethnobotanical Misc. Hardware Toys Other	0 0 0 0 0 0 0 26	87%
	Miscellaneous	Unidentified	0	0%
	Totals		30	100%

Unit 4 Surface/unprov	Category	Includes	Number Present	Percent Represented
	Kitchen Group	Ceramic Vessels Glass Vessels Metal Vessels Utensils Pharmaceuticals Kitchen Ware	11 198 51 1 0 5	33%
	Architectural Group	Window Glass Nails Spikes Construction Materials Door Parts	62 70 0 26 0 0	20%
	Furniture Group	Furniture Hardware	0	
	Arms Group	Projectiles Cartridges Firearm Parts	0 1 0	>1%
	Clothing Group	Buckles Buttons Sewing Material Grommets Scissors Glass Beads	0 0 1 1 0 0	>1%
	Personal Group	Coins Keys Jewelry Misc.	0 0 0 5	1%
	Tobacco Group	Pipes Tobacco Related	0 0	
	Bone Group	Faunal	36	4%
	Activities Group	Tools Farm Tools Fishing Gear Stable and Barn Ethnobotanical Misc. Hardware Toys Other	2 0 0 0 0 3 0 310	39%
	Miscellaneous	Unidentified	20	2.49
	Totals		803	100%