

The President Benjamin Harrison Home: Using Archaeology for the Interpretation and Reconstruction of the Carriage House

Prepared for:
Division of Historic Preservation and Archaeology
Indiana Department of Natural Resources

Prepared by
Deborah L. Rotman

With Contributions by
Rachel Mancini
Mark Boatwright

Donald R. Cochran
Principal Investigator

February 5, 1998

Report of Investigation #48

Archaeological Resources Management Service
Ball State University, Muncie, IN 47306-0435
Phone: 765-285-5328 Fax: 765-285-2163
E-Mail Address: Arms@bsuvc.bsu.edu

This program receives federal financial assistance for the identification and protection of historic properties. Under Title VI of the Civil Rights Act of 1964 and Section 504 of the Rehabilitation Act of 1973, the U.S. Department of the Interior prohibits discrimination on the basis of race, color, national origin, or disability in its federally assisted programs. If you believe you have been discriminated against in any program activity, or facility as described above, or if you desire further information, please write to: Office for Equal Opportunity, U.S. Department of the Interior, Washington, D.C. 20240.

The activity that is the subject of this archaeological excavation has been financed in part with federal funds from the National Park Service, U.S. Department of the Interior. However, the contents and opinions contained in this publication do not necessarily reflect the views or policies of the Department of the Interior, nor does the mention of trade names or commercial products constitute endorsement or recommendation by the Department of the Interior.

ABSTRACT

An archaeological excavation at the President Benjamin Harrison Home in Indianapolis, Indiana was conducted under a Department of Interior Historic Preservation Survey and Planning Grant administered by the Indiana Department of Natural Resources, Division of Historic Preservation and Archaeology. The purpose of the project was to investigate the location of the former carriage house.

The museum staff has begun the process of restoring the Harrison Home property to circa 1895, a time when the former president and his family were in residence. An important aspect of the preservation plan included the restoration of the former carriage house. Preliminary investigation revealed that the foundation of this structure and associated cultural deposits were present. The location of this outbuilding was the focus of archaeological excavation.

The artifacts and other data recovered provide information regarding the dimensions of the building, the uses of its three bays, and other aspects of the Harrison occupation of the property. This report describes the excavation, discusses the material culture and other data, and explicates the contribution of the archaeological investigation to the reconstruction and interpretation of the carriage house.

ACKNOWLEDGEMENTS

Archaeological Resources Management Service gratefully acknowledges the participation and cooperation of the President Benjamin Harrison Home staff, without whom this project could not have been completed. Museum staff who participated included Nancy Boling, Jennifer Capps, Edward Dewes, Liz Foster, Lynne Orvis, and Angie Shelburne. We were particularly indebted to Terri Palladino, who was involved in both the daily excavation on site and various aspects of documentary and historical research needed for the completion of the report.

The following individuals volunteered on the excavation: Adam Cochran, Allison Cochran, Tammy Cochran, Brandy Edwards, Merrilee Gardner, Karla Hanafée, Paula Hanafée, Tyler Johnson, and Susan Savage. The following ARMS employees served as field and laboratory assistants for this project: Andrea Ballard, Mark Boatwright, Paul Butler, Elizabeth Campbell, Sharon Cottrell, Michelle Greenan, Christina Kirsch, Ronnica Robbins, and Aaron Smith. Rachel Mancini, graduate assistant for the project, was involved in all aspects of field investigations, laboratory processing, and report preparation. I am especially grateful for her support on this project.

The professional staff at ARMS has been a tremendous source of help throughout the project. Don Cochran read multiple drafts of the report and offered suggestions for its improvement. Karla Carmichael tended to the many business and logistical details needed for the project's completion. Michael Angst, Beth McCord, and Mitchell Zoll provided support in a variety of meaningful ways. Despite the cooperative nature of this project, any errors which appear in this document are fully my responsibility.

TABLE OF CONTENTS

Abstract	ii
Acknowledgements	iii
Table of Contents	iv
List of Figures	v
List of Tables	vi
Introduction	1
A Brief Biographical Sketch of Benjamin Harrison and His Life at the Home on North Delaware Street	2
Harrison's Early Law and Military Careers (pre-1860s)	2
Prosperity after the Civil War (1860s-1880)	2
An Emerging National Political Career (1880-1893)	4
After the Presidency: A Return to Life in Indianapolis (1893-1937)	4
Ownership by the Arthur Jordon Foundation (1937-1966)	4
The President Benjamin Harrison Foundation (1966 to present)	5
Methodology and Description of Archaeological Investigations at the President Benjamin Harrison Home	6
Field Methodology	6
Laboratory Methodology	6
Description of Excavation Units	8
Unit 1	8
Unit 2	13
Unit 3	13
Unit 4	13
Feature 4	20
Unit 5	20
Unit 6	20
Summary	20
Interpretation and Reconstruction of the Former Carriage House	23
Dimensions of the Structure	23
Use of the Three Bays	23
The Southern Bay	23
The Center Bay	27
The North Bay	27
Material Culture Recovered	28
Socioeconomic Status and the Former President	28
Historic Ceramics	28
Faunal Remains	29
Summary and Conclusions	30
References Cited	33
Appendix 1: Material Culture Recovered	A1
Appendix 2: Summary of Artifact Dates	B1

LIST OF FIGURES

2.1	Location of the President Benjamin Harrison Home (site 12-Ma-774) as shown on the USGS 7.5' Indianapolis West, Quadrangle	3
3.1	Site map of 12-Ma-774 showing the extant foundation and feature locations	7
3.2	Feature 1, Unit 1 as it appeared in the north bay during the removal of the asphalt and gravel parking surfaces	9
3.3	The 1887 Sanborn Fire Insurance Map of the Harrison Home property . . .	10
3.4	East wall profile of Feature 1	11
3.5	Sample of material culture recovered from the excavation of the carriage house	12
3.6	Feature 2, Unit 2 as it appeared in the north bay during the removal of the asphalt and gravel parking surfaces	14
3.7	Feature 2 during excavation	15
3.8	Feature 3 at the surface	16
3.9	Feature 3 at the base of excavation	17
3.10	Exterior foundation as it appeared in Unit 4	18
3.11	West wall profile of Unit 4	19
3.12	Feature 4 as it appeared in the north bay	21
3.13	Feature 5 as it appeared at the base of level 1	22
4.1	Aerial view of the carriage house excavation	24
4.2	Photograph of the former carriage house (circa 1888)	25
4.3	The 1898 Sanborn Fire Insurance Map of the Harrison Home property . . .	26

LIST OF TABLES

4.1	Summary of the diagnostic ceramics recovered	29
4.2	Summary of faunal remains recovered	32

CHAPTER 1

INTRODUCTION

The museum staff at the President Benjamin Harrison Home has begun restoring the property to circa 1895, a time when the former president and his family were in residence. An important aspect of the restoration plan included the reconstruction of a carriage house which was original to the homelot in 1875, but was demolished in 1938.

Very little documentary information is available for the carriage house. A few photographs of the home also fortuitously illustrate a small portion of the structure. However, this is insufficient documentation upon which to base the reconstruction of this outbuilding.

A preliminary investigation of the former carriage house location was conducted in the Fall of 1996. Portions of the intact foundation were discovered. Based upon this information, further archaeological investigation was recommended (Rotman 1996a).

Archaeological Resources Management Service developed a strategy for sampling the cultural deposits within the carriage house foundation in conjunction with museum programming (Rotman 1996b). A public archaeology project was implemented August 18-26, 1997. Excavation was conducted by Mark Boatwright, Elizabeth Campbell, Sharon Cottrell, Rachel Mancini, and the author with additional assistance provided by museum staff members — Nancy Boling, Jennifer Capps, Edward Dewes, Liz Foster, Lynne Orvis, Terri Palladino, and Angie Shelburne. Participation in the project was open to the public and several volunteers took part in the excavation. The remaining foundation of the carriage house was exposed, the dimensions of the structure were determined, and the archaeological deposits within each of the three bays were sampled.

A brief biographical sketch of President Benjamin Harrison and a history of the North Delaware Street property are included in this report. The excavation is described and the material culture recovered from the site is discussed. The conclusion documents the ways in which the archaeological investigation has informed the preservation activities at the site as well as avenues for future research.

CHAPTER 2

A BRIEF BIOGRAPHICAL SKETCH OF BENJAMIN HARRISON AND HIS LIFE AT THE HOME ON NORTH DELAWARE STREET

The following historical information was provided by the President Benjamin Harrison Museum. It is based on research of the documents available in the Harrison archival collection, the Indiana State Library, the Indiana Historical Library, the Indiana State Archives, and other historical sources.

One of the former homes of President Benjamin Harrison is located at the corner of Thirteenth and Delaware streets in Indianapolis (Figure 2.1). The museum is seeking to restore the property to the time when the Harrison family was in residence (circa 1895). The house and surrounding yard is a National Historic Landmark as well as on the National Register of Historic Places.

Harrison's Early Law and Military Careers (pre-1860s)

Benjamin Harrison was born in North Bend, Ohio on August 20, 1833. He was the son of John Scott Harrison (a United States Representative), the grandson of William Henry Harrison (the ninth President of the United States), and was named for his great-grandfather Benjamin Harrison V (a signer of the Declaration of Independence). He graduated from Miami University in Oxford, Ohio in 1852. Following the completion of his legal studies, he married Caroline Lavinia Scott. The newlyweds moved to Indianapolis, Indiana in 1854 where Harrison began his law career.

Prior to the Civil War, he served as city attorney, secretary of the Republican State Committee, and Supreme Court reporter for Indiana. After the war had begun, Harrison joined the Union Army as a second lieutenant. Within a month, he became a colonel and the commander of the Seventieth Indiana Regiment. He acquired a reputation for his ability to command and for bravery while fighting under General William T. Sherman in Georgia. This esteem led to his promotion to brevet brigadier general in February 1865.

Following the war, Harrison returned to Indianapolis and his law practice. His oratorical ability brought invitations to speak at political gatherings and thus his stature in the Indiana Republican Party grew.

Prosperity after the Civil War (1860s-1880)

As Benjamin Harrison's legal career prospered, he occupied larger and larger homes. Before moving to his Delaware Street home, the Harrisons lived at two other (now demolished) Indianapolis locations.

In 1867, Harrison purchased a double lot on the west side of North Delaware Street in the Martindale subdivision (1230 North Delaware). He began construction of his home on that lot in 1874 under the supervision of H.T. Brandt. When completed the following year, the Italianate-style home contained 16 rooms. Its cost — including the carriage house, brick driveway, and landscaping — was \$24,818.67. Contractor specifications for the construction of the carriage

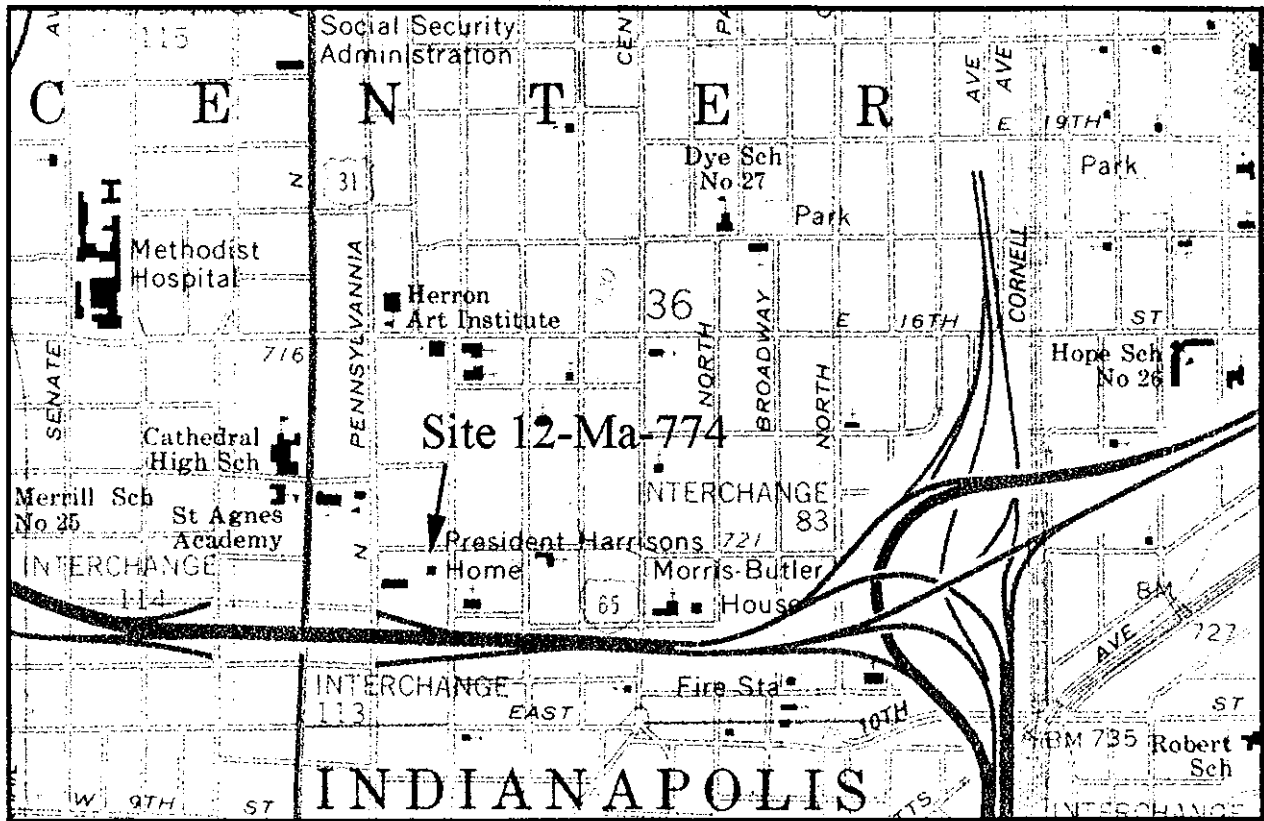


Figure 2.1. Location of the President Benjamin Harrison Home (Site 12-Ma-774) as shown on the USGS 7.5' Indianapolis West, Quadrangle.

house included “gas light(ing), water, stalls filled with clay, cinder drive topped with brick, sink, and two ‘casks and setting’” (Terri Palladino, personal communication 1996).

In 1876, Harrison ran for governor. Although he lost the election, he gained control of the state Republican party the following year. From this status, President Rutherford B. Hayes appointed Harrison to the Mississippi River Commission in June 1879. It was through this position that he gained national visibility.

An Emerging National Political Career (1880-1893)

In 1880, Harrison ran for the United States Senate and, without significant opposition, he was elected by the Indiana Legislature on January 18, 1881. During this time, his family lived in both Indianapolis and Washington D.C.

Harrison’s effort to obtain a second term in the Senate failed in 1887 and he returned to his home in Indianapolis later that year. His failed re-election bid, however, did not diminish his political standing. With the aid of dedicated friends, he received the Republican nomination for president in 1888. In planning his campaign, he recognized that his home was highly accessible to the nation. Harrison gave 94 speeches in his stay-at-home campaign which drew huge crowds to his front porch.

Although the Democratic nominee received 95,713 more votes, Harrison had won with the majority of electoral votes. During his one term presidency, Harrison exhibited high moral principles, a devotion to duty, and hard work. Highlights of his term in office include the Sherman Antitrust Act (1890), establishment of National Forest Reserves (1891), the meeting of the First International American Conference, and a greatly enlarged merchant marine and navy. During his presidency, Harrison and his family resided in Washington D.C. and rented out the home in Indianapolis. Caroline, his wife, died in 1892 while still in the White House.

After the Presidency: A Return to Life in Indianapolis (1893-1937)

After he returned to Indianapolis at the end of his presidency in 1893, Harrison made several changes to his home on North Delaware Street. A two-story brick addition was made to the north-rear side of the home. The two room addition housed a butler’s pantry on the first level and a bathroom on the second. In 1895, a new front porch was built under the direction of architect Louis H. Gibson. It replaced a small porch located on the southeast corner of the house.

In 1896, Harrison married his wife’s niece, Mary Lord. She redecorated the home to her taste. After Benjamin’s death on March 13, 1901, Mary and her daughter continued to live in the home until they moved to New York City in 1913. During this period, the balustrade was removed from the porch and replaced with brick. Between 1913 and 1937, the house was rented to various families and eventually became a rooming house.

Ownership by the Arthur Jordan Foundation (1937-1966)

In March 1937, the Arthur Jordan Foundation purchased the home and remaining furniture. Shortly thereafter, in 1938, the badly deteriorated carriage house was demolished. The Arthur Jordan Foundation utilized the Harrison home mainly as a female dormitory for the Arthur

Jordon Music Conservatory. The purchase of the home, however, included a provision that portions of the house would be used as a memorial to Benjamin Harrison. This included limited display in the parlor and library of furnishings that had belonged to the Harrison family.

At the time it bought the Harrison home, the Arthur Jordon Foundation acquired five lots to the south of that property on which stood the Emery-Ayres house (1204 North Delaware) and the Fletcher-Wasson house (1116 North Delaware). The foundation eventually procured the lot to the north of the Harrison home on which the Darlington house stood (1240 North Delaware).

In 1951, the Arthur Jordon Music Conservatory (renamed the Jordon College of Music in 1949) moved to Butler University, thus vacating its Delaware Street houses. The foundation did not convey its buildings to Butler University. Instead, the trustees decided to open the Harrison home to the public as a museum under the administration of the Jordon College of Music with operation and maintenance expenses borne by the Arthur Jordon Foundation. In keeping with this decision, the second floor of the home was restored and the public given access in 1952. Butler University occupied the adjacent buildings.

In 1963, Butler University vacated the North Delaware Street houses. The proposed I-65 right-of-way was slated to pass through the southern end of the Arthur Jordon Foundation property. The two southernmost lots were sold for the construction of the roadway and the Fletcher-Wasson house was demolished. To decrease the cost of maintenance, the Emery-Ayres home was also razed. In the early 1970s, the Darlington house was removed from the property as well. Now surrounded by open space, the Harrison home took on the appearance of an urban estate.

The President Benjamin Harrison Foundation (1966 to present)

In 1966, the Jordon College of Music severed its relationship with the Harrison house. Subsequently, the Arthur Jordon Foundation created the President Benjamin Harrison Foundation to operate the home. The Arthur Jordon Foundation continues to supply funds for its operation and maintenance. A large sum of money was expended in 1973-74 to refurbish and renovate the home which included the installation of office space, a meeting room, and storage areas in the basement. The front porch was removed and replaced with a reproduction of the 1895 version which had been commissioned by the retired president.

Preservation efforts to date include the repair of the home's metal cornice. Window repairs have also begun. Both the cornices and window frames are repainted to their 1895 color scheme. The reconstruction of the carriage house constitutes the next phase in restoring the property to a time during which the president was in residence.

CHAPTER 3

METHODOLOGY AND DESCRIPTION OF ARCHAEOLOGICAL INVESTIGATIONS AT THE PRESIDENT BENJAMIN HARRISON HOME

In September 1996, shovel testing was conducted at the President Benjamin Harrison Home to determine whether intact archaeological deposits associated with the former carriage house were present. Undisturbed cultural materials were identified and further investigation was recommended (Rotman 1996a). The area in which the structure had once stood was now an asphalt parking lot. Before excavation could begin, asphalt and gravel were removed to expose the carriage house foundation. Six units were hand-excavated within the foundation. The purpose of the excavation was to provide additional information to the museum staff for use in their interpretation and reconstruction of this nineteenth-century outbuilding.

Field Methodology

Once the asphalt and gravel were removed, the dimensions of the foundation and its three bays were revealed. Several features were exposed within the north and south bays. Excavation units were positioned to provide information regarding these features as well as the foundation's construction. Two 1 x 2 meter units were placed within the south bay. One 1 x 2 meter unit was excavated within the central bay and three 1 x 2 meter units were placed within the north bay. Figure 3.1 shows the location of the excavation units within the carriage house foundation.

All units were hand-excavated in arbitrary 10 cm levels. Within the features (Features 1-5), some levels followed the stratigraphy of depositional episodes. Unit 1 Feature 1 was terminated at 1 m when the safety of the excavator became a concern. However, the feature was augered to a depth of 184 cm where an impenetrable gravel layer was encountered. Unit 2 Feature 2 was excavated to its base at 110 cm. All other units were excavated into culturally sterile soils.

All deposits were screened through 1/4" (6.4 mm) wire mesh. Two-liter soil samples for the recovery of microdata were taken from each feature level. Other samples from within the units were taken at the discretion of the field director. All artifacts and special samples were processed according to the standardized laboratory protocol outlined below.

Detailed plan and profile maps were drawn and all excavation units were documented with black and white photographs and color slides. Upon completion of the excavation, the units and foundation were left exposed at the request of museum staff.

Laboratory Methodology

Laboratory methods followed standardized procedures used by Archaeological Resources Management Service. Artifacts were cleaned, identified, and inventoried. Documentary resources in the ARMS lab and Bracken Library at Ball State University were consulted for the identification of artifacts. Specific references will be cited as the material culture is discussed in the following chapters. Illustrations of some diagnostic and unique artifacts are included in this report.

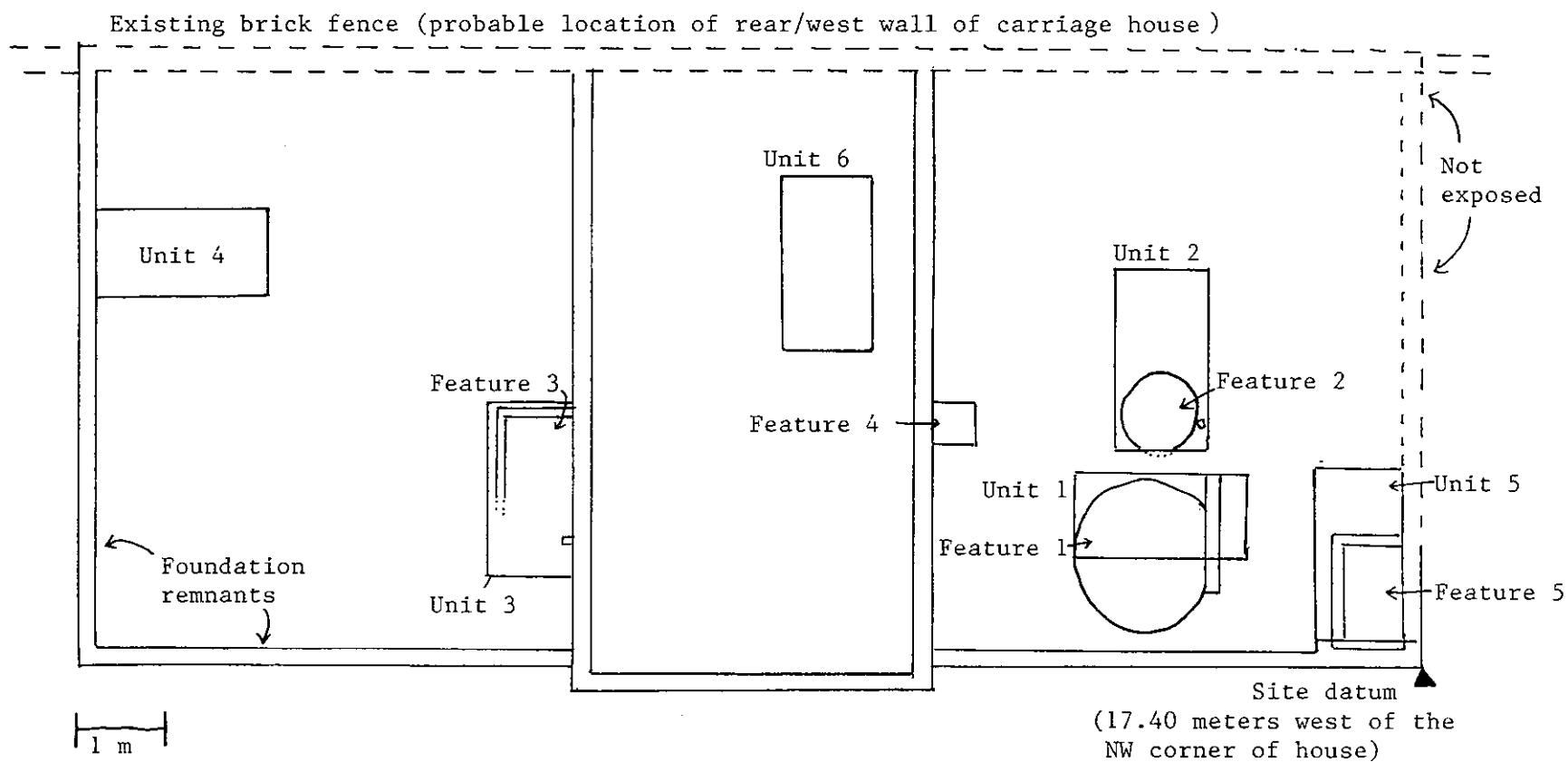


Figure 3.1. Site map for 12-Ma-774

Microdata samples were water screened through 2 mm wire mesh. Samples were further separated by screening the dried materials through 4.699 mm mesh. All components of the sample (<4.699 mm microdata and >4.699 mm microdata) were hand-sorted under 2x magnification. All cultural materials were identified and inventoried by provenience.

All artifacts and accompanying documentation — photographs and excavation notes — remained the property of the President Benjamin Harrison Home. However, a copy of the documentation was curated with the Archaeological Resources Management Service of Ball State University (Accession #97.59) with the permission of the museum director. A summary of the artifacts recovered from excavation at the President Benjamin Harrison Home, including artifacts from microdata samples, was included in Appendix 1.

Description of Excavation Units

A brief description of each excavation unit follows. A more detailed discussion of the archaeological data is included in the next chapter.

Unit 1: Unit 1 was situated to bisect a circular feature (Feature 1) which was 1 m in diameter and located in the northern bay (Figure 3.2). Only the interior of this feature was excavated while the matrix outside of the feature was left intact for stability. The unit was hand-excavated to a depth of 100 cm. The feature matrix was then augered an additional 84 cm. Augering was terminated when an impenetrable layer of gravel was encountered.

Feature 1 was probably a recharge basin. The unmortared walls and gravel bottom were designed not to retain water, but to dispel it. A similar feature was excavated along the north side of the President Benjamin Harrison House earlier this year (Rotman 1997).

The construction of this feature was very unusual. Its northernmost edge was flat, immediately adjacent to what appeared to be a former foundation or wall. The 1887 Sanborn Fire Insurance Map showed that the original structure on site was actually a series of conjoined outbuildings (Figure 3.3). The flat, northernmost edge of Feature 1 may have been part of the north wall of this central structure.

The recharge basin was probably in use until the turn of the century. Once the wastewater feature was no longer needed, it was likely filled in via a series of dumping episodes over a relatively short period of time. Although differences in the soil matrix were observed (Figure 3.4), remarkably similar artifacts were distributed throughout the feature. For example, clear glass, slate, brick, coal, and butchered animal bone were recovered from virtually all levels.

Two of the most interesting artifacts recovered during the excavation came from Feature 1. A metal dog license was found within the uppermost stratum of this unit (10-20 cm BD). The expiration date on the artifact was May 31, 1898 (Figure 3.5). An 1892 penny was recovered from Level 4 (40-50 cm BD) (see also Figure 3.5). The deposition of these two artifacts — the older (1892) beneath the younger (1898) — appeared fortuitous. Again, the homogeneity of the material culture throughout the feature suggested that the feature was filled in over a relatively short period of time.



Figure 3.2. Feature 1 as it appeared in Unit 1. Notice the flat edge/former wall which defined the northern boundary of the feature. Facing north.

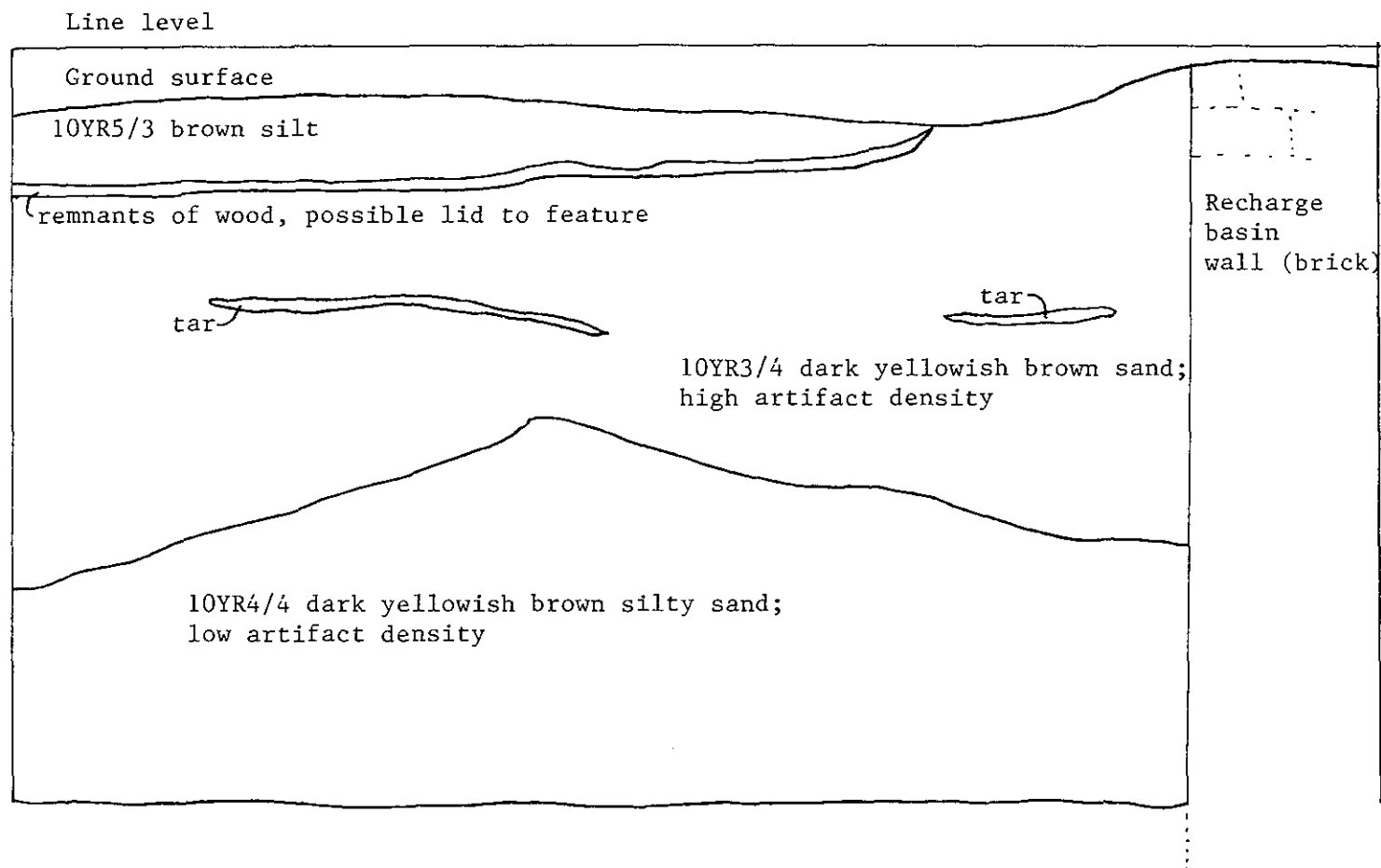


Figure 3.4. Profile of the east wall of Unit 1 Feature 1.
Site 12-Ma-774.

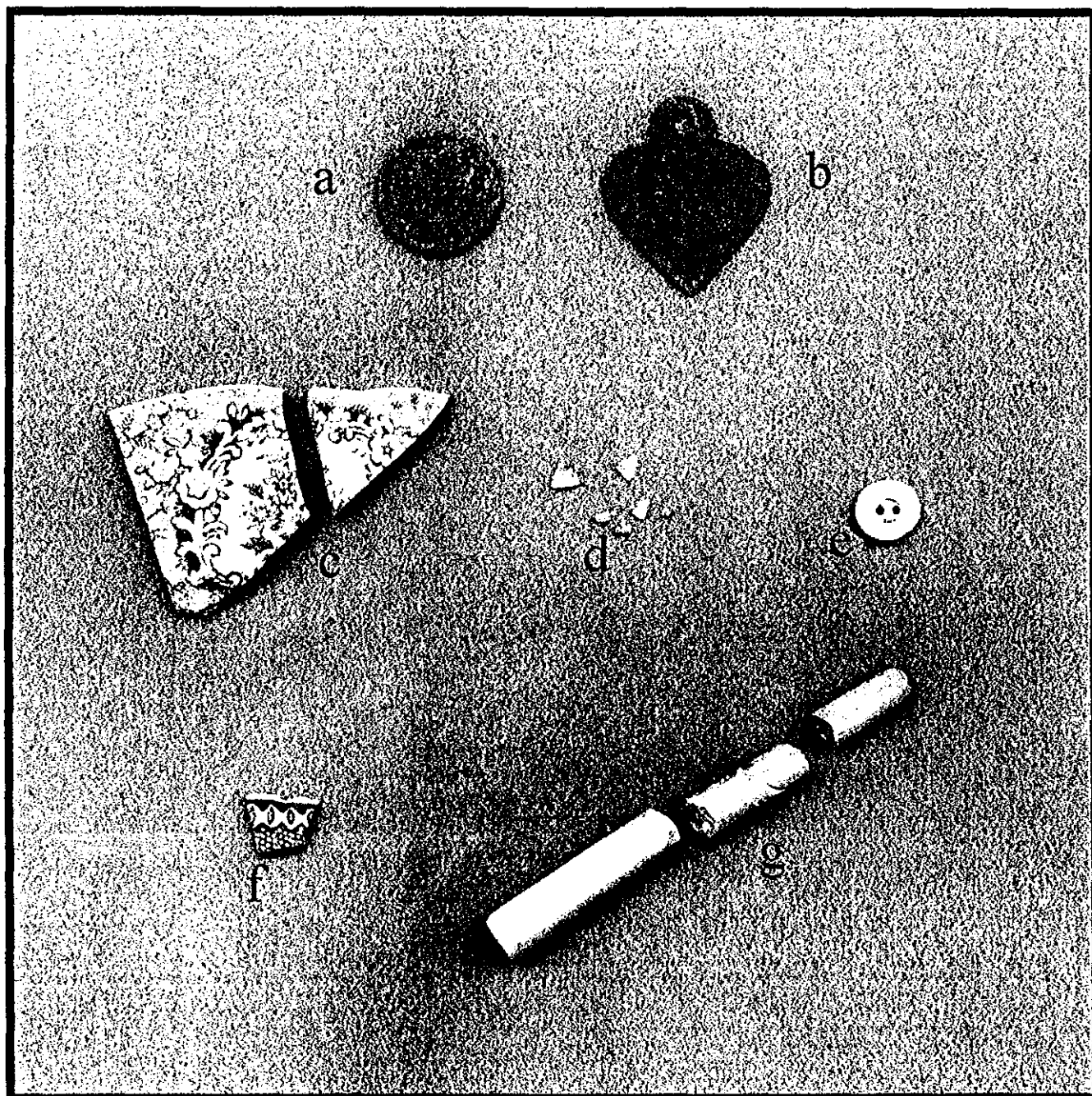


Figure 3.5. Sample of material culture recovered from the excavation of the carriage house. Unit 1 (a) Indian head penny 1892; (b) metal pet identification tag; (c) Unit 3 (c) whiteware, rim scalloped, transfer print, green, gold rim decoration, late 19th-early 20th century (Majewski and O'Brien 1987:145); (d) fauna, egg shell; (e) shell button, 2-hole; Unit 4 (f) whiteware, rim, transfer print, blue, 1830-1860 (Lofstrom et al. 1982:14); (g) ceramic pipe stem.

Unit 2: This unit was placed just west of Unit 1, also within the northern bay. The excavation unit encompassed a small circular feature (Feature 2) in its east end (Figure 3.6). The soil matrix within and outside of Feature 2 was excavated separately. The feature consisted of a brick cylinder 110 cm deep which was completely sealed along the bottom and sides with mortar. At 57 cm below datum, a metal pipe (7 cm in diameter) was identified which extended into the basin from the north wall (Figure 3.7). The pipe ended in a fitting which had an opening on its underside. Unlike Feature 1, this feature was clearly designed to hold water and appears to have been a small cistern.

Once the receptacle was no longer in use, it was filled in with debris. Although building materials such as plaster, slate, nails, and window pane glass were recovered from Feature 2, most of the fill consisted of a ceramic chimney flue and its associated bricks and soot. The nature of the debris within Feature 2 suggested that it had been filled in during a single depositional episode. The date at which the feature fell into disuse and was filled was unknown.

Unit 3: A rectangular-like feature (Feature 3) in the southern bay was revealed during gravel removal (Figure 3.8). The excavation unit was oriented east to west over it. The eastern edge of the feature was not discovered until approximately 40 cm below datum. The interior dimensions of Feature 3 is 107 cm E/W by 77 cm N/S by 85 cm deep. Its precise function was unknown. The walls of the feature were mortared to but not tied into the foundation. Therefore, its construction clearly post-dates that of the foundation, perhaps different phases of the same construction episode.

A lead water pipe entered from the southwest corner at 60 cm below datum. This element was added after the feature had fallen into disuse. Indeed, a portion of Feature 3 was destroyed to accommodate the pipe (Figure 3.9). Once the water pipe was no longer in use, the entire feature was filled in with a single episode of secondarily deposited refuse. The date at which this occurred was not known. Butchered animal bone; discarded clear, aqua, and amber glass as well as metal nails; escutcheons; and chain links were distributed throughout the feature with nearly equal quantities in each level. A shell button, egg shells, and green transfer printed whiteware were also recovered from Feature 3 (Figure 3.5).

The excavation of Unit 3 also provided structural information regarding the interior walls of the carriage house. Unlike the foundations of the exterior walls, the interior wall supports consisted of only seven courses of bricks with no underlying footings.

Unit 4: Unit 4 was placed on the interior of the southern bay adjacent to the south wall of the carriage house. This unit was placed against the foundation to provide structural and technological information on the construction of the building. This exterior wall of the carriage house was composed of six courses of bricks over two courses of footings (Figure 3.10). A builder's trench was observed in the soil profile (Figure 3.11). The soil matrices in this Unit 4 were representative of the deposits observed throughout the excavated, non-feature units in the carriage house.



Figure 3.6. Relative location of Feature 2 within the east end of Unit 2. Facing north.



Figure 3.7. Feature 2 partially excavated. The pipe extends into the cistern from the north.



Figure 3.8. Feature 3 in Unit 3. Facing west. Notice the absence of the eastern feature boundary.

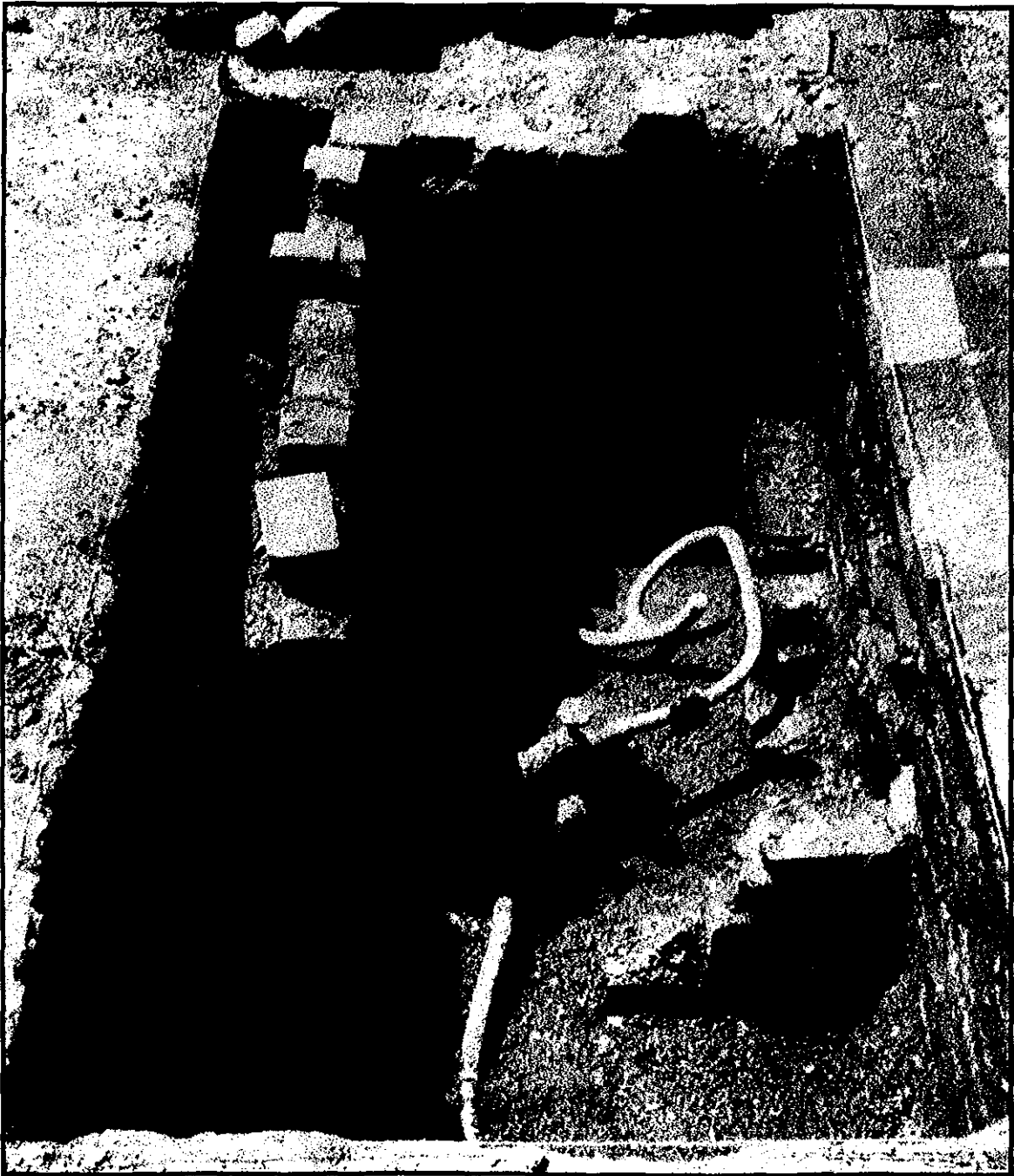


Figure 3.9. The base of Feature 3. Facing west. Notice that the east wall of Feature 3 was destroyed to accommodate the lead piping.



Figure 3.10. Foundation of the southern exterior wall as it appeared in Unit 4. Note the two courses of footings at the base. Facing south.

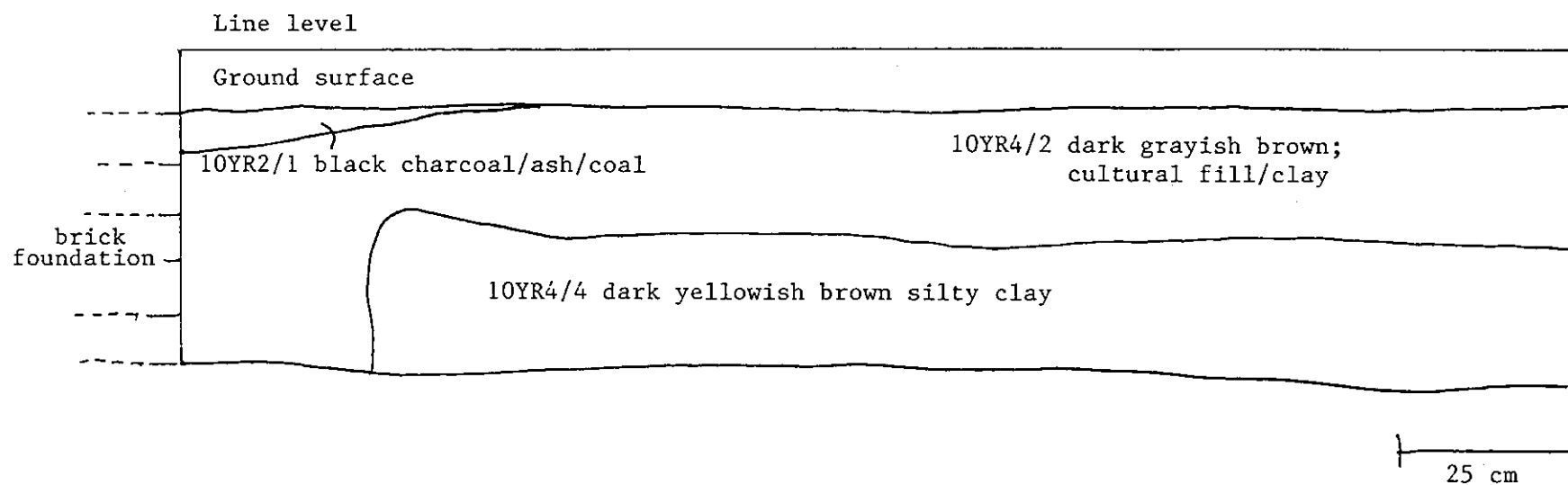


Figure 3.11. Profile of the west wall of excavation Unit 4.
Site 12-Ma-774.

No other features were discovered within the unit. The material culture recovered from Unit 4 consisted of construction related debris — nails, brick fragments, plaster, drain tile, and window pane glass — as well as clear, aqua, and amethyst container glass; butchered animal bone; and oyster shell. A ceramic tobacco pipe stem and blue transfer print whiteware were also recovered from Unit 4 (see again Figure 3.5).

Feature 4: Feature 4 was not within an excavation. It was located along the north edge of the wall which separated the north and central bays to the carriage house. This small square of bricks was probably a hearth for a coal stove (Figure 3.12).

Unit 5: This unit was placed over a rectangular feature (Feature 5) in the northeast corner of the carriage house and was almost identical to Feature 3 (Figure 3.13). Feature 5 was approximately the same size and depth as Feature 3 (75 cm N/S by 132 cm E/W by 90 cm deep). At the base of the unit were several large steam pipes which may have served the carriage house at one time.

This feature was also filled with secondarily deposited refuse. However, whereas Feature 3 contained a variety of refuse (both construction and domestic in nature), Feature 5 was filled, almost exclusively, with building related debris. The function and date at which Feature 5 was filled in were also unknown.

Unit 6: Unit 6 was the only unit placed within the central bay of the carriage house (see again Figure 3.1). No features were identified on the surface within this section of the structure. However, excavation of Unit 6 revealed that the soil in the western half of the bay was significantly more compact than in the eastern half. The horses appear to have been kept in the central bay of the carriage house. In a photograph from 1896, the vertical slats of the horse stalls are visible through the open door of the structure (Anonymous 1896:4).

The material culture recovered from Unit 6, not surprisingly, was fairly sparse. Artifacts included a few shards of amber and aqua glass, butchered animal bone, undecorated whiteware, and nails.

Summary

A wide variety of material culture was recovered from the carriage house. The archaeological data from the excavation provided valuable clues into how the individual bays were used as well as important structural information for reconstructing the carriage house.

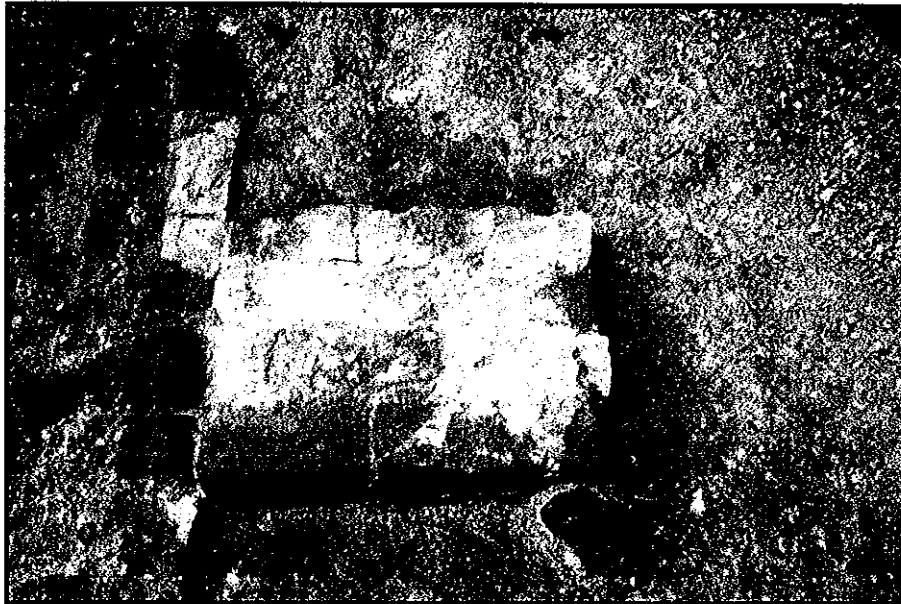


Figure 3.12. Hearth for a coal stove (Feature 4) which measures 50 cm N/S by 43 cm E/W. Facing west.



Figure 3.13. Feature 5, Unit 5 during excavation. Facing west.

CHAPTER 4

INTERPRETATION AND RECONSTRUCTION OF THE CARRIAGE HOUSE

The archaeological excavation in and around the foundation of the former carriage house at the President Benjamin Harrison Home has provided the museum staff with some important information for not only reconstructing this outbuilding but also for its interpretation to visitors. The dimensions of the structure have been identified, the function of the three bays has been determined, and other clues regarding the lives of the former president and his family were discovered.

Dimensions of the Structure

With the removal of the asphalt parking area, the remnants of the former carriage house were uncovered. The footprint of this former structure was divided into three bays (Figure 4.1). The western wall of the carriage house was not found. However, the current brick fence along the alley was probably erected in its place.

The two exterior bays were slightly larger (5.6 m N/S by 6.8 m E/W) than the central bay (4.2 m N/S by 7.0 m E/W). The central portion of the structure also extended further to the east (by 20 cm) than the remainder of the building. The only photographs of the carriage house (circa 1888) showed a gabled roof on this section of the building (Figure 4.2).

The original stable and conjoined outbuildings which were shown on the 1887 Sanborn must have been renovated shortly after the map was published. Photographs of the structure the following year illustrated a very different building. The dimensions of the carriage house foundation exposed during archaeological investigations at the site as well as the relationship of the structure to the house was consistent with the 1888 photograph and the 1898 Sanborn Fire Insurance map (Figure 4.3).

Use of the Three Bays

Each of the three bays served a separate function. The interpretation of each of these areas is based not only on the archaeological evidence but also upon personal recollections of this former outbuilding.

The Southern Bay. The southernmost bay was part of the original stable shown on the 1887 Sanborn map. How this bay may have been used in the earlier structure was unknown. However, it is possible that the rectangular feature (Feature 3) within this bay may have served as an underground grain storage. This feature was probably abandoned before or during the expansion of the carriage house in the late 1880s, but the material culture from Unit 3 was inconclusive.

Once the carriage house was expanded, the southernmost bay almost certainly served as storage for the carriage. The brick driveway leading from North Delaware Street is perfectly aligned with the double doors that would have been located along the northeast corner of this bay (see again Figure 4.1). Oral accounts not only supported this conclusion, but also provided



Figure 4.1. Aerial view of the carriage house excavation. Note the three bays. The northern edge of the structure and Feature 5 are not shown. The units are 1 x 2 m. Facing west.



Figure 4.2. Photograph of the carriage house at the Harrison Home circa 1888. Facing west. Notice the alignment of the doors with the driveway. Courtesy of the President Benjamin Harrison Home Foundation.

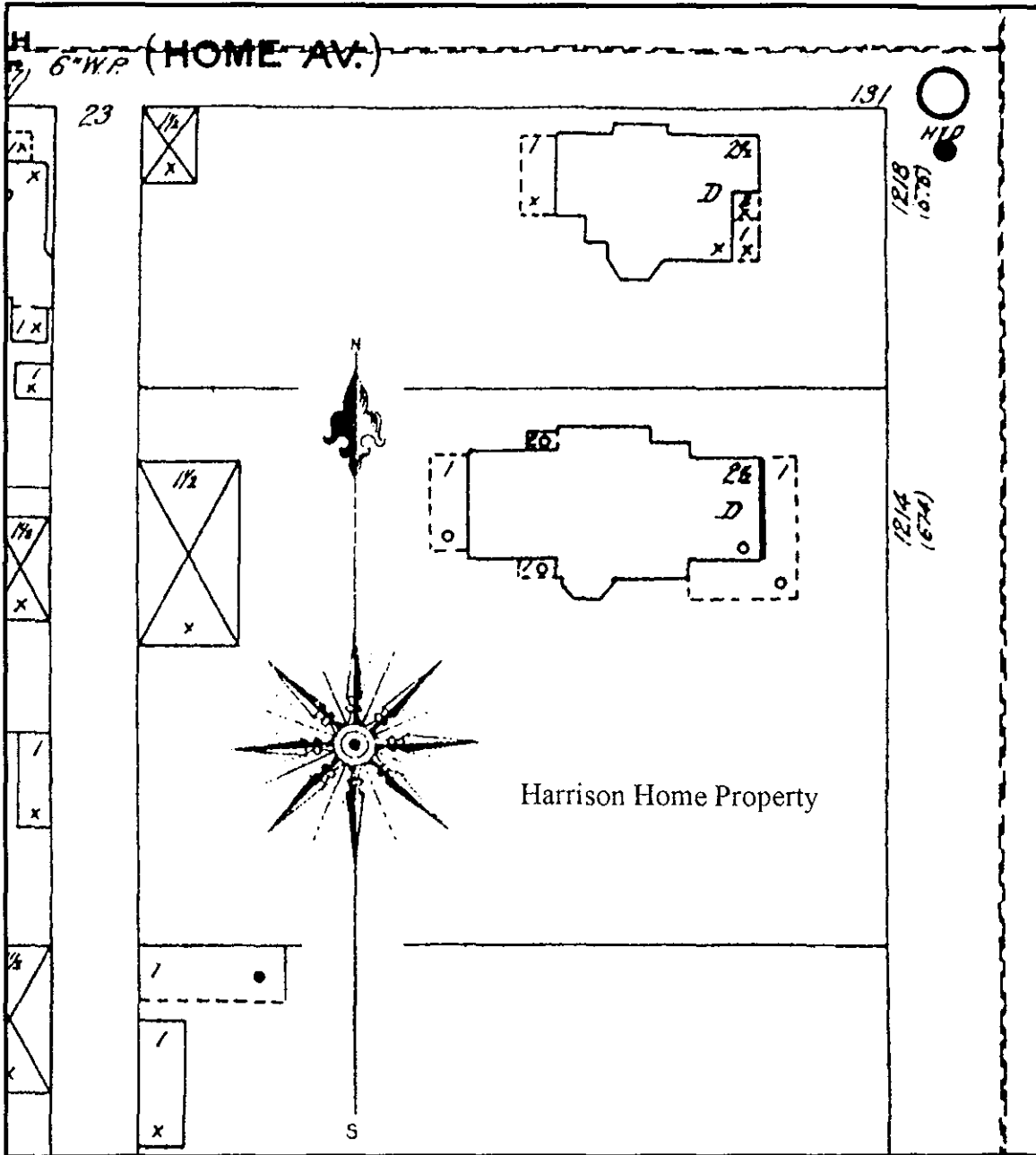


Figure 4.3. The Harrison Home property as it appeared on the 1898 Sanborn Fire Insurance Map.

additional information. The southernmost bay of the carriage house also opened onto the alley (formerly Talbot Street) so that the carriage could be pulled through the building from either direction (Terri Palladino, personal communication 1997).

The pull-through feature of the southernmost bay further supported the probability that the rectangular feature (Feature 3) was abandoned prior to the 1880s. If Feature 3 indeed represented an underground storage facility, it would have been located directly within the carriage's path which would not have been convenient.

The Center Bay. The center bay was also part of the original stable shown on the 1887 Sanborn map. The use of this bay in the earlier structure was also unknown.

Although not entirely conclusive, the archaeological evidence indicated that the horses may have been housed in the center bay of the later structure. Highly compact soils in the western portion of the bay may have been the result of repeated compaction by horse hooves.

The documentary record regarding the function of the central bay was more definitive than the archaeological evidence. In a photograph from 1896, the vertical slats from the horse's stalls are visible through an open door (Anonymous 1896:4). In addition, an individual who had visited the carriage house before it was demolished recalled that this section of the building had indeed housed the horses (Terri Palladino, personal communication 1997). Personal recollections also indicated that the loft above the central bay served as quarters for the groomsman and driver (Terri Palladino, personal communication 1997).

The North Bay. The history of the north bay appeared to be more complex than the other areas of the carriage house. The recharge basin (Feature 1), cistern (Feature 2), and stove hearth (Feature 4) all appeared within the central structure of the series of conjoined outbuildings that was shown on the 1887 Sanborn map (see again Figure 3.3).

The recharge basin was certainly part of the 1887 outbuilding. Part of the wall from the earlier structure formed the northern edge of this feature. The recharge basin was incorporated into the new carriage house. The archaeological evidence — the 1892 penny and 1898 license — indicated that the feature continued to be used until around the turn-of-the-century.

It was unclear whether or not the construction of the cistern was contemporaneous with the recharge basin. No conclusive archaeological or historical evidence was found. However, it seemed likely that these two components for managing water were indeed built and used at the same time. The two features would have both been located in the center structure on the 1887 Sanborn map. Perhaps this earlier outbuilding served as a wash house. It was also unclear whether the cistern remained in use following the construction on the building in the late 1880s. The cistern may have been abandoned while the recharge basin continued to be used.

The third outbuilding shown on the north end of the 1887 Sanborn was smaller than the other structures. It did not extend as far to the east. However, no archaeological evidence for this

exterior wall and no clues to the function of this outbuilding were recovered during the archaeological excavation.

Feature 5 would not have been located within the 1887 series of structures. It was, however, found in the northeastern corner of the later carriage house and, therefore, most likely dated to this later structure. Features 3 and 5 were remarkably similar and may have served similar functions. Although the archaeological evidence from each was inconclusive, perhaps Feature 5 served as an underground storage facility once the later carriage house had been constructed and Feature 3 was abandoned.

The north bay in the 1880s structure may very well have served as a water and feed room. A recharge basin, cistern, and underground storage within this bay would have been consistent with this function. Indeed, these would have been essential elements in a carriage house during the late nineteenth-century and there is no evidence that the other sections, the south and center bays, served this purpose.

Material Culture Recovered

The artifacts recovered during the excavation of the carriage house at the President Benjamin Harrison Home was typical for a residential property occupied during the second half of the nineteenth and into the twentieth centuries. The assemblage included construction debris such as brick, nails, and window glass as well as domestic and personal refuse including ceramics, butchered animal bones, buttons, and clothing rivets. A complete listing of the artifacts recovered was provided in Appendix 1.

Additionally, the artifacts were temporally consistent with the period during which the carriage house was in use (1875-1938) (see Appendix 2 for a summary of temporally sensitive artifacts). There were a few ceramics, such as blue transfer-printed whiteware (1830-1860; Lofstrom et al. 1982:14), which predate the site's occupation. However, it is likely that the Harrison's brought these dishes with them when they moved into the house in 1867. These artifacts may have been family heirlooms, received as gifts at their 1853 wedding or acquired during the early years of their marriage. The Harrisons moved to Indianapolis in 1854 (Jennifer Capps, personal communication 1998).

Socioeconomic Status and the Former President

Most of the artifacts served to simply confirm the domestic nature of activities at the site and also supported the temporal range for the carriage house. However, two material classes were particularly informative with regard to the socioeconomic class of the family who resided in the home. Historic ceramics and faunal remains were used to elucidate the relative economic status of the Harrisons. The family of this successful lawyer and former president owned expensive dishes and consumed high quality meat cuts.

Historic Ceramics. Nineteenth-century ceramics are used by historical archaeologists to define four socioeconomic categories. Simply stated, undecorated ceramics are deemed indicative of the lowest economic scale. Minimally decorated vessels and painted wares are consistent with a middle class status, while transfer prints are generally identified with the

wealthiest, elite families (Miller 1991:39-40). Not surprisingly, nearly half of the diagnostic ceramics were transfer prints (47.37%, N=9), consistent with the upper class (Table 4.1). This sample, however, is comparatively small and may not be truly representative of all the ceramics used at the President Benjamin Harrison Home.

Table 4.1 A summary of the diagnostic ceramics in terms of economic scaling that were recovered from the President Benjamin Harrison Home

Least Expensive Most Expensive			
<i>Undecorated</i>	<i>Minimally decorated</i>	<i>Painted wares</i>	<i>Transfer prints</i>
4	1	5	9

Faunal Remains. A variety of faunal remains recovered during the excavation of the carriage house at the Harrison Home also provided interesting information regarding the property's occupants. Egg shells (N=32) and chicken bones (N=91) were among the faunal remains from the site. There was no documentary or archaeological evidence of a chicken coop or brooder house at the Harrison Home property. Ledger entries indicated that eggs were purchased at a grocery rather than being produced at the homelot (Jennifer Capps, personal communication 1997). Poultry, therefore, would have had to have been bought as well.

Oyster shell was even more ubiquitous at the site. There were 39 oyster half shells in the faunal assemblage. The recovery of oyster shells was particularly interesting since it was reportedly one of the president's favorite foods (Jennifer Capps, personal communication 1997). Documentation in the Harrison archives indicated that, for special occasions, the president had oysters packed on ice in barrels and shipped by train (Ann Moore, personal communication 1997). The cost of such an endeavor would have been prohibitive to all but the wealthiest of individuals.

There was also a significant quantity of butchered animal bone recovered from the site. The faunal assemblage was identified by species and cut-type whenever possible (Tucker et al. 1952). The number of individual species present at the Harrison Home was summarized in Table 4.2.

Unidentified taxa included small to medium birds (3%), medium mammals (4%), and large mammals (44%). Unidentified small rabbit and rodent equaled 6%. The identifiable bone suggested that beef was the most frequently consumed meat (31%). Chicken represented 10% and turkey 2% of the remaining faunal remains. Pig and sheep were absent from the assemblage.

The residents of the President Benjamin Harrison home appear to have relied predominantly on processed beef. None of the identifiable beef cut-types displayed evidence of home butchering. The steaks and roasts were found to have been cut in varying thicknesses and all displayed evidence of butchering techniques prevalent during the late nineteenth-century. All were hand-sawn, chopped and broken, or cut with a knife.

The quality of meat cuts illustrated that the household bought nearly equal quantities of expensive and cheaper meats. Clonts (1969) demonstrated that forelimb meat cuts were historically less expensive than hind cuts, as presented in Table 4.2. Without exception, regardless of the cost of the meat cut, the emphasis was on quantity. For example, roasts provided a larger volume of meat than any other meat cut type and was 63% of the beef in the faunal assemblage. Almost half (32%) of the steaks consumed by the Harrison family were expensive cuts (i.e., club steaks, sirloin, and rib steaks, N=81). The faunal assemblage overall indicated that the president was able to purchase whatever type and cut of meat he desired.

Summary and Conclusions

The remnants of the carriage house foundation were exposed and investigated archaeologically in conjunction with a public archaeology project funded in part by the Department of Natural Resources. The dimensions of the structure were identified, the functions of the three bays were defined, and additional information regarding the Harrison family was discovered.

The overall dimensions of the building were 15.4 m N/S by 7.0 m E/W. The outer bays were slightly wider north-south than the center bay. However, the central section extended an additional 20 cm beyond the others on the east elevation.

Each bay served a different function. The southernmost bay was aligned with the brick driveway leading from North Delaware street and appeared to have been used for carriage storage. The central bay housed the horses on the main floor and provided quarters for the groomsman and driver on the second story. Although the documentary and archaeological evidence was not conclusive, the north bay was likely used for water and feed storage.

The material culture recovered from the excavation of the carriage house was entirely consistent with that which would be expected from the home of a successful lawyer and former president. Nearly half of the historic ceramics were transfer printed wares, the most expensive ceramic type available during the late nineteenth-century. The faunal evidence also indicated that the Harrisons were of substantial financial means. Eggs and poultry were purchased rather than raised on the property. Meat cut-types suggested that the Harrison family purchased whatever they desired. Even oyster shells were recovered which the president had them shipped by train for dinner on special occasions. No artifacts or archaeological evidence was uncovered which was inconsistent with the documentary representation of the Harrison family.

There are additional opportunities for archaeological research at the President Benjamin Harrison Home. Other features, such as recharge basins, are known to be present near and around the house. As construction and restoration activities continue, other archaeological resources may be encountered which warrant further investigation.

Furthermore, the archaeological record of the Harrison Home property contains three other homelots. The remains of the Fletcher-Wasson, Emery-Ayres, and Darlington houses are still present beneath the current ground surface. While they do not directly pertain to President Harrison and his family, archaeological investigation of these sites will provide valuable

comparative data regarding urban residential life in Indianapolis during the late nineteenth and early twentieth centuries.

The excavation of the carriage house is an important aspect of the preservation activities at the Harrison Home. The information recovered will aid not only in the interpretation and reconstruction of this outbuilding, but also in understanding the lives of the Harrison family during their occupation of the site.

Table 4.2 A summary of the faunal remains recovered from the Harrison Home

Least Expensive	Species	Cut of Meat	Quantity
.	Unidentified Small/Medium Bird	---	13
.	<u>Gallus gallus</u> (chicken)	---	91
.	Unidentified Medium Mammal	---	33
.	Unidentified Large Mammal	---	400
.	<u>Bos taurus</u> (domestic cattle)	Feet (soup bones)	5
.		Naval-cut ribs	7
.		Forearm steaks	3
.		Neck/chuck roast	3
.		Low-cut soup bones	8
.		Chuck steak	15
.		Cross-cut foreshank roasts	39
.		Round steak	9
.		Chuck roast	2
.		Round roast	36
.		Hind shank	16
.		T-bone	5
.		Rib steak	13
.		Rib roast	45
.		Sirloin steak	20
.		Club steak	24
Most Expensive		Sirloin roast	24

REFERENCES CITED

Anonymous

- 1896 Artwork of Indianapolis, 1896. Vol. 3. State Historical Library, Indianapolis.

Clounts, John

- 1969 An Analysis of Faunal Remains at Two Sites in the Tucson Urban Renewal Area. Ms. on file with the Arizona State Museum, Tucson.

Deiss, Ronald William

- 1981 The Development and Application of a Chronology for American Glass. Midwestern Archaeological Research Center, Illinois State University, Normal.

Henry, S. L., and Patrick H. Garrow

- 1982 Appendix H: Ceramic Type Descriptions. In City of Phoenix: Archaeology of the Original Townsite, Blocks 1 and 2. Edited by J. S. Cable, S. L. Henry, and D. E. Doyel. Soils Systems Publications in Archaeology No. 1:465-472.

Ketchum, William C., Jr.

- 1991 American Stoneware. Henry Holt & Company, New York.

Lofstrom, Ted, Jeffrey P. Tordoff, and Douglas C. George

- 1982 A Seriation of Historic Earthenwares in the Midwest, 1780-1870. *Minnesota Archaeologist* 41(1):3-29.

Majewski, Teresita and Michael J. O'Brien

- 1987 The Use and Misuse of Nineteenth-Century English and American Ceramics in Archaeological Analysis. *Advances in Archaeological Method and Theory* 11:97-209.

Miller, George

- 1991 A Revised Set of CC Index Values for Classification and Economic Scaling of English Ceramics 1787 to 1880. *Historical Archaeology* 25(2):1-25.

Newman, T. Stell

- 1970 A Dating Key for Post-Eighteenth Century Bottles. *Historical Archaeology* 4:70-75.

Rotman, Deborah L.

- 1996a President Benjamin Harrison Home: An Archaeological Evaluation of the Former Carriage House (96FR32). Ms. on file with Archaeological Resources Management Service, Ball State University, Muncie, Indiana.

1996b Archaeological Testing Proposal and Estimate for the President Benjamin Harrison Carriage House Excavation. Ms. on file with Archaeological Resources Management Service, Ball State University, Muncie, Indiana.

1997 Salvage Excavation: President Benjamin Harrison Home Recharge Basin/Dry Well. Ms. on file with Archaeological Resources Management Service, Ball State University, Muncie, Indiana.

Tucker, Voegoli, and Wellington

1952 The Cross-Sectional Muscle Nomenclature of the Beef Carcass. Michigan State College Press, East Lansing.

Wagner, Mark J., Mary R. McCorvie, Brad Koldehoff, Terry J. Martin, and Kathryn E. Parker

1989 Phase I, II & III Archaeological Investigations at Leavenworth, Kansas. Cultural Resources Management Report No. 132. American Resources Group, Ltd. Carbondale, Illinois.

Appendix 1: Material Culture Recovered from the President
Benjamin Harrison Carriage House

Appendix 1: Material Culture Recovered from the President Benjamin Harrison Home

UNIT	LEVEL	ID	NUMBER	COMMENTS	QTY
1	1	Brick	97.59.1.1.15	FS#111	1
1	1	Metal, nails, miscellaneous	97.59.1.1.53	FS#9	17
1	1	Tar, roofing	97.59.1.1.10	FS#111	25
1	1	Metal, nails, miscellaneous	97.59.1.1.6	FS#111	15
1	1	Brick	97.59.1.1.52	FS#9	15
1	1	Metal, nails, miscellaneous	97.59.1.1.45	FS#10/F1	15
1	1	Earthenware, glazed, drain tile	97.59.1.1.66	FS#9	1
1	1	Redware, unglazed, flower pot	97.59.1.1.14	FS#111	1
1	1	Brick	97.59.1.1.38	FS#8/F1	24
1	1	Fauna, bone, miscellaneous	97.59.1.1.43	FS#10/F1	14
1	1	Mortar	97.59.1.1.7	FS#111	20
1	1	Flora, wood	97.59.1.1.20	FS#1/F1/microdata	27
1	1	Glass, jar, lip/rim/body, clear	97.59.1.1.48	FS#10/F1	4
1	1	Flora, charcoal	97.59.1.1.13	FS#111	20
1	1	Metal, round, unidentified	97.59.1.1.50	FS#10/F1	1
1	1	Flora, wood	97.59.1.1.1	FS#111	50
1	1	Coal	97.59.1.1.39	FS#8/F1	4
1	1	Metal, rivet, clothing	97.59.1.1.65	FS#9	1
1	1	Fauna, egg shell	97.59.1.1.11	FS#111	1
1	1	Iron, slag	97.59.1.1.5	FS#111	12
1	1	Glass, bottle, body, clear	97.59.1.1.29	FS#8/F1	6
1	1	Tar, roofing	97.59.1.1.46	FS#10/F1	8
1	1	Plastic, tack handle	97.59.1.1.9	FS#111	1
1	1	Metal/fauna, shell button with copper shank	97.59.1.1.31	FS#8/F1	1
1	1	Chain link	97.59.1.1.35	FS#8/F1	1
1	1	Whiteware, plain, unidentified	97.59.1.1.32	FS#8/F1	2
1	1	Glass, unidentified, body, milk	97.59.1.1.67	FS#9	1
1	1	Fauna, shell, egg	97.59.1.1.60	FS#9	5
1	1	Fauna, bone, miscellaneous	97.59.1.1.22	FS#1/F1/microdata	5
1	1	Glass, container, body, purple	97.59.1.1.57	FS#9	1
1	1	Mortar	97.59.1.1.40	FS#8/F1	5
1	1	Tar, roofing	97.59.1.1.33	FS#8/F1	5
1	1	Metal, unidentified	97.59.1.1.16	FS#111	1
1	1	Metal, nails, miscellaneous	97.59.1.1.27	FS#8/F1	7
1	1	Metal, plate, perforated, unidentified	97.59.1.1.64	FS#9	1
1	1	Glass, window pane, clear	97.59.1.1.63	FS#9	1
1	1	Mortar	97.59.1.1.26	FS#8/F1	8
1	1	Coal/coal slag	97.59.1.1.19	FS#1/F1/microdata	63
1	1	Mortar	97.59.1.1.23	FS#1/F1/microdata	9
1	1	Metal, slag	97.59.1.1.36	FS#8/F1	1
1	1	Flora, wood	97.59.1.1.24	FS#8/F1	60
1	1	Metal, slag	97.59.1.1.55	FS#9	18
1	1	Flora, wood	97.59.1.1.59	FS#9	27
1	1	Redware, glazed, drain tile	97.59.1.1.47	FS#10/F1	1
1	1	Glass, bottle, body, clear	97.59.1.1.8	FS#111	5
1	1	Metal, dog license, Exp. May 31, 1898, #4596	97.59.1.1.30	FS#8/F1	1
1	1	Slate	97.59.1.1.4	FS#111	8
1	1	Brick	97.59.1.1.3	FS#111	30
1	1	Brick	97.59.1.1.28	FS#8/F1	2
1	1	Fauna, bone, miscellaneous	97.59.1.1.54	FS#9	31
1	1	Coal	97.59.1.1.61	FS#9	3
1	1	Microdata debris	97.59.1.1.17	FS#1/F1/microdata	-
1	1	Brick	97.59.1.1.21	FS#1/F1/microdata	7
1	1	Flora, wood, burned	97.59.1.1.18	FS#1/F1/microdata	2
1	1	Fauna, bone, miscellaneous	97.59.1.1.41	FS#8/F1	1
1	1	Plaster	97.59.1.1.51	FS#9	10
1	1	Slate	97.59.1.1.58	FS#9	2
1	1	Iron, slag	97.59.1.1.34	FS#8/F1	1
1	1	Flora, wood	97.59.1.1.37	FS#8/F1	6
1	1	Mortar	97.59.1.1.44	FS#10/F1	4

Appendix 1: Material Culture Recovered from the President Benjamin Harrison Home

UNIT	LEVEL	ID	NUMBER	COMMENTS	QTY
1	1	Brick	97.59.1.1.49	FS#10/F1	2
1	1	Coal	97.59.1.1.12	FS#111	11
1	1	Asphalt, shingles	97.59.1.1.56	FS#9	9
1	1	Flora, wood	97.59.1.1.42	FS#10/F1	50
1	1	Glass, container, body, clear	97.59.1.1.62	FS#9	4
1	1	Fauna, bone, miscellaneous	97.59.1.1.2	FS#111	68
1	1	Fauna, bone, miscellaneous	97.59.1.1.25	FS#8/F1	10
1	10	Microdata debris	97.59.1.10.1	FS#93/F1/Auger3	-
1	10	Glass, container, body, clear	97.59.1.10.6	FS#93/F1/Auger3	2
1	10	Coal/coal slag	97.59.1.10.2	FS#93/F1/Auger3	23
1	10	Metal, unidentified	97.59.1.10.5	FS#93/F1/Auger3	2
1	10	Fauna, bone, miscellaneous	97.59.1.10.7	FS#93/F1/Auger3	2
1	10	Flora, wood	97.59.1.10.4	FS#93/F1/Auger3	3
1	10	Mortar	97.59.1.10.3	FS#93/F1/Auger3	12
1	10	Fauna, shell, oyster	97.59.1.10.8	FS#93/F1/Auger3	5
1	11	Glass, bottle, body, clear	97.59.1.11.4	FS#92/F1/Auger 4	2
1	11	Metal, iron, slag	97.59.1.11.3	FS#92/F1/Auger 4	5
1	11	Microdata debris >4.699mm	97.59.1.11.1	FS#92/F1/Auger 4	-
1	11	Fauna, bone, miscellaneous	97.59.1.11.5	FS#92/F1/Auger 4	2
1	11	Mortar	97.59.1.11.2	FS#92/F1/Auger 4	6
1	11	Fauna, shell, oyster	97.59.1.11.7	FS#92/F1/Auger 4	2
1	11	Brick	97.59.1.11.6	FS#92/F1/Auger 4	1
1	13	Brick	97.59.1.13.7	FS#90/F1/Auger 6	2
1	13	Metal slag	97.59.1.13.2	FS#90/F1/Auger 6	17
1	13	Fauna, bone, miscellaneous	97.59.1.13.3	FS#90/F1/Auger 6	1
1	13	Glass, unidentified, clear	97.59.1.13.8	FS#90/F1/Auger 6	1
1	13	Plaster	97.59.1.13.6	FS#90/F1/Auger 6	7
1	13	Microdata debris	97.59.1.13.1	FS#90/F1/Auger 6	-
1	13	Flora, wood	97.59.1.13.4	FS#90/F1/Auger 6	5
1	13	Coal	97.59.1.13.5	FS#90/F1/Auger 6	13
1	14	Coal slag	97.59.1.14.3	FS#89/F1/Auger 7	13
1	14	Flora, wood, burned	97.59.1.14.6	FS#89/F1/Auger 7	1
1	14	Brick	97.59.1.14.7	FS#89/F1/Auger 7	3
1	14	Microdata debris	97.59.1.14.1	FS#89/F1/Auger 7	-
1	14	Mortar	97.59.1.14.5	FS#89/F1/Auger 7	4
1	14	Metal, slag	97.59.1.14.4	FS#89/F1/Auger 7	15
1	14	Coal	97.59.1.14.2	FS#89/F1/Auger 7	11
1	15	Coal	97.59.1.15.3	FS#88/F1/Auger 8	9
1	15	Fauna, bone, miscellaneous	97.59.1.15.2	FS#88/F1/Auger 8	2
1	15	Microdata debris >4.699mm	97.59.1.15.1	FS#88/F1/Auger 8	-
1	16	Flora, wood, burned	97.59.1.16.4	FS#87/F1/Auger 9	3
1	16	Slate	97.59.1.16.3	FS#87/F1/Auger 9	3
1	16	Glass, unidentified, clear	97.59.1.16.6	FS#87/F1/Auger 9	1
1	16	Fauna, bone, miscellaneous	97.59.1.16.2	FS#87/F1/Auger 9	4
1	16	Brick	97.59.1.16.7	FS#87/F1/Auger 9	1
1	16	Microdata debris	97.59.1.16.1	FS#87/F1/Auger 9	-
1	16	Coal	97.59.1.16.8	FS#87/F1/Auger 9	3
1	16	Flora, wood	97.59.1.16.5	FS#87/F1/Auger 9	2
1	2	Metal, nail, miscellaneous	97.59.1.2.33	FS#16/microdata	1
1	2	Ceramic, unidentified, body, blue/white glaze	97.59.1.2.4	FS#14	1
1	2	Fauna, shell, egg, brown	97.59.1.2.13	FS#14	6
1	2	Glass, tableware, embossed, clear	97.59.1.2.29	FS#16/microdata	1
1	2	Glass, window pane, aqua	97.59.1.2.16	FS#14	1
1	2	Stoneware, shoulder, brown glaze	97.59.1.2.11	FS#14	1
1	2	Mortar	97.59.1.2.30	FS#16/microdata	5
1	2	Brick	97.59.1.2.26	FS#16/microdata	8
1	2	Ceramic, figurine, head/torso, white	97.59.1.2.18	FS#14	1
1	2	Fauna, shell, oyster	97.59.1.2.3	FS#14	3
1	2	Porcelain, body, undecorated	97.59.1.2.19	FS#14	3
1	2	Metal, nails, miscellaneous/metal, unidentified	97.59.1.2.2	FS#14	71

Appendix 1: Material Culture Recovered from the President Benjamin Harrison Home

UNIT	LEVEL ID		NUMBER	COMMENTS	QTY
1	2	Fauna, shell, egg	97.59.1.2.25	FS#16/microdata	6
1	2	Whiteware, body, embossed	97.59.1.2.14	FS#14	1
1	2	Glass, window pane, clear	97.59.1.2.17	FS#14	1
1	2	Ironstone, rim, undecorated	97.59.1.2.8	FS#14	1
1	2	Glass, container, body, clear	97.59.1.2.6	FS#14	3
1	2	Redware, unglazed, drain tile	97.59.1.2.9	FS#14	1
1	2	Fauna, shell, oyster	97.59.1.2.31	FS#16/microdata	2
1	2	Coal	97.59.1.2.24	FS#16/microdata	12
1	2	Slate	97.59.1.2.28	FS#16/microdata	7
1	2	Fauna, bone, miscellaneous	97.59.1.2.1	FS#14	88
1	2	Glass, bottle, neck, amber	97.59.1.2.5	FS#14	1
1	2	Fauna, bone, miscellaneous	97.59.1.2.22	FS#16/microdata	8
1	2	Brick	97.59.1.2.15	FS#14	1
1	2	Flora, wood	97.59.1.2.23	FS#16/microdata	11
1	2	Microdata debris <4.699mm	97.59.1.2.21	FS#16/microdata	-
1	2	Coal slag	97.59.1.2.32	FS#16/microdata	1
1	2	Flora, wood	97.59.1.2.7	FS#14	3
1	2	Coal slag	97.59.1.2.10	FS#14	2
1	2	Stoneware, body, brown glaze	97.59.1.2.12	FS#14	1
1	2	Microdata debris >4.699mm	97.59.1.2.20	FS#16/microdata	-
1	2	Tar, roofing	97.59.1.2.27	FS#16/microdata	4
1	3	Metal, unidentified	97.59.1.3.2	FS#15	1
1	3	Stoneware, body, brown glazed	97.59.1.3.16	FS#15	2
1	3	Brick	97.59.1.3.18	FS#15	1
1	3	Caulk	97.59.1.3.8	FS#15	1
1	3	Redware, glazed, drain tile	97.59.1.3.10	FS#15	1
1	3	Yellowware, body, undecorated	97.59.1.3.15	FS#15	1
1	3	Metal, nails, miscellaneous/metal, unidentified	97.59.1.3.1	FS#15	43
1	3	Tar, roofing	97.59.1.3.3	FS#15	9
1	3	Glass, window pane, clear	97.59.1.3.14	FS#15	1
1	3	Fauna, shell, oyster	97.59.1.3.9	FS#15	1
1	3	Flora, wood	97.59.1.3.11	FS#15	2
1	3	Ironstone, footring, undecorated	97.59.1.3.6	FS#15	1
1	3	Earthenware, impressed, drain tile?	97.59.1.3.19	FS#15	1
1	3	Whiteware, rim, undecorated	97.59.1.3.4	FS#15	1
1	3	Ironstone, body, undecorated	97.59.1.3.5	FS#15	1
1	3	Whiteware, body, transfer print, flow blue	97.59.1.3.17	FS#15	1
1	3	Mortar	97.59.1.3.7	FS#15	1
1	3	Glass, container, body, clear	97.59.1.3.13	FS#15	4
1	3	Slate	97.59.1.3.12	FS#15	1
1	3	Fauna, bone, miscellaneous	97.59.1.3.20	FS#15	31
1	4	Glass, container, body, clear	97.59.1.4.34	F1/FS#46	1
1	4	Metal, nail, unidentified	97.59.1.4.8	FS#24	10
1	4	Earthenware, coarse, hollow, brown glazed	97.59.1.4.13	FS#24	1
1	4	Brick, handmade, with mortar	97.59.1.4.7	FS#24	4
1	4	Plaster	97.59.1.4.30	F1/FS#46	6
1	4	Metal, tin, foil	97.59.1.4.15	FS#24	1
1	4	Glass, tableware, body, embossed, clear	97.59.1.4.12	FS#24	1
1	4	Drain pipe	97.59.1.4.17	FS#24	2
1	4	Coal slag	97.59.1.4.24	FS#21/microdata	4
1	4	Coal	97.59.1.4.3	FS#24	4
1	4	Metal, coin, penny, 1892	97.59.1.4.38	FS#46/F1	1
1	4	Coal slag	97.59.1.4.37	FS#46/F1	3
1	4	Brick, machine made	97.59.1.4.9	FS#24	1
1	4	Brick, vitrified	97.59.1.4.16	FS#24	1
1	4	Faunal, shell	97.59.1.4.10	FS#24	1
1	4	Glass, window pane, clear	97.59.1.4.35	F1/FS#46	1
1	4	Metal, unidentified	97.59.1.4.21	FS#21/microdata	2
1	4	Fauna, bone, miscellaneous	97.59.1.4.32	F1/FS#46	3
1	4	Flora, wood, burned	97.59.1.4.2	FS#24	3

Appendix 1: Material Culture Recovered from the President Benjamin Harrison Home

<u>UNIT</u>	<u>LEVEL ID</u>		<u>NUMBER</u>	<u>COMMENTS</u>	<u>QTY</u>
1	4	Glass, window pane, aqua	97.59.1.4.14	FS#24	2
1	4	Metal, slag	97.59.1.4.29	F1/FS#46	1
1	4	Brick	97.59.1.4.28	F1/FS#46	1
1	4	Metal, lead, slag	97.59.1.4.5	FS#24	10
1	4	Tar	97.59.1.4.36	FS#46/F1	1
1	4	Flora, wood	97.59.1.4.4	FS#24	4
1	4	Brick	97.59.1.4.23	FS#21/microdata	2
1	4	Glass, bottle, body/base, clear	97.59.1.4.11	FS#24	1
1	4	Redware, unglazed, flower pot	97.59.1.4.27	F1/FS#46	1
1	4	Flora, wood	97.59.1.4.33	F1/FS#46	11
1	4	Mortar	97.59.1.4.6	FS#24	6
1	4	Flora, wood, charcoal	97.59.1.4.1	FS#24	11
1	4	Microdata debris	97.59.1.4.19	FS#21/microdata	-
1	4	Flora, wood, burned	97.59.1.4.25	FS#21/microdata	2
1	4	Slate	97.59.1.4.20	FS#21/microdata	1
1	4	Metal, nails, miscellaneous	97.59.1.4.31	F1/FS#46	5
1	4	Plaster	97.59.1.4.26	FS#21/microdata	4
1	4	Mortar with impression of brick	97.59.1.4.18	FS#24	1
1	4	Mortar	97.59.1.4.22	FS#21/microdata	4
1	5	Brick	97.59.1.5.3	FS#45/F1	2
1	5	Coal	97.59.1.5.13	FS#44/F1/microdata	6
1	5	Metal, unidentified	97.59.1.5.9	FS#45/F1	2
1	5	Metal, nails, miscellaneous	97.59.1.5.8	FS#45/F1	6
1	5	Mortar	97.59.1.5.16	FS#44/F1/microdata	1
1	5	Brick	97.59.1.5.12	FS#44/F1/microdata	10
1	5	Redware, glazed, drain tile	97.59.1.5.5	FS#45/F1	1
1	5	Mortar	97.59.1.5.1	FS#45/F1	8
1	5	Microdata debris >4.699mm	97.59.1.5.11	FS#44/F1/microdata	-
1	5	Fauna, bone, miscellaneous	97.59.1.5.10	FS#45/F1	14
1	5	Glass, unidentified, clear	97.59.1.5.14	FS#44/F1/microdata	3
1	5	Fauna, bone, miscellaneous	97.59.1.5.15	FS#44/F1/microdata	4
1	5	Coal slag and clinkers	97.59.1.5.7	FS#45/F1	8
1	5	Glass, window pane, aqua	97.59.1.5.6	FS#45/F1	3
1	5	Fauna, bone, miscellaneous	97.59.1.5.4	FS#45/F1	1
1	5	Metal, iron, slag	97.59.1.5.2	FS#45/F1	5
1	6	Coal slag	97.59.1.6.2	FS#43/F1	3
1	6	Metal, unidentified	97.59.1.6.3	FS#43/F1	2
1	6	Redware, unglazed, flower pot	97.59.1.6.9	FS#58/F1	3
1	6	Metal, nail, miscellaneous	97.59.1.6.6	FS#58/F1	8
1	6	Mortar	97.59.1.6.1	FS#43/F1	18
1	6	Fauna, shell, oyster	97.59.1.6.12	FS#58/F1	1
1	6	Clinker	97.59.1.6.10	FS#58/F1	1
1	6	Brick	97.59.1.6.4	FS#43/F1	12
1	6	Iron, slag	97.59.1.6.11	FS#58/F1	1
1	6	Glass, window pane, aqua	97.59.1.6.13	FS#58/F1	2
1	6	Mortar	97.59.1.6.7	FS#58/F1	2
1	6	Fauna, bone, miscellaneous	97.59.1.6.8	FS#58/F1	1
1	6	Tar, roofing	97.59.1.6.5	FS#58/F1	4
1	7	Metal, nail, unidentified	97.59.1.7.20	FS#85/F1	4
1	7	Flora, charcoal	97.59.1.7.24	FS#85/F1	1
1	7	Glass, window pane, aqua	97.59.1.7.15	FS#73/microdata	3
1	7	Fauna, bone, miscellaneous	97.59.1.7.16	FS#73/microdata	2
1	7	Glass, window pane, clear	97.59.1.7.22	FS#85/F1	2
1	7	Coal	97.59.1.7.23	FS#85/F1	1
1	7	Brick	97.59.1.7.6	FS#62	2
1	7	Brick	97.59.1.7.19	FS#85/F1	2
1	7	Metal, nail, miscellaneous	97.59.1.7.4	FS#62	9
1	7	Mortar	97.59.1.7.13	FS#73/microdata	4
1	7	Coal	97.59.1.7.18	FS#7/microdata	11
1	7	Mortar	97.59.1.7.21	FS#85/F1	3

Appendix 1: Material Culture Recovered from the President Benjamin Harrison Home

UNIT	LEVEL	ID	NUMBER	COMMENTS	QTY
1	7	Redware, glazed, drain tile	97.59.1.7.7	FS#62	1
1	7	Brick	97.59.1.7.14	FS#73/microdata	3
1	7	Fauna, bone, miscellaneous	97.59.1.7.3	FS#62	6
1	7	Asphalt, roofing	97.59.1.7.8	FS#62	2
1	7	Coal	97.59.1.7.10	FS#62	3
1	7	Coal slag/clinker	97.59.1.7.11	FS#62	1
1	7	Mortar	97.59.1.7.2	FS#62	5
1	7	Glass, bottle, body/base/kick, bright green	97.59.1.7.1	FS#62	3
1	7	Glass, window pane, aqua	97.59.1.7.9	FS#62	6
1	7	Microdata debris >4.699mm	97.59.1.7.12	FS#73/microdata	-
1	7	Metal, flat, unidentified	97.59.1.7.5	FS#62	7
1	7	Flora, charcoal	97.59.1.7.17	FS#73/microdata	6
1	9	Tar, roofing	97.59.1.9.7	FS#94/F1/Auger2	2
1	9	Microdata debris <4.699mm	97.59.1.9.1	FS#94/F1/Auger2	-
1	9	Fauna, bone, miscellaneous	97.59.1.9.5	FS#94/F1/Auger2	4
1	9	Brick	97.59.1.9.3	FS#94/F1/Auger2	7
1	9	Floral, coal	97.59.1.9.6	FS#94/F1/Auger2	15
1	9	Mortar	97.59.1.9.2	FS#94/F1/Auger2	17
1	9	Fauna, bone, fossilized?	97.59.1.9.4	FS#94/F1/Auger2	1
1	Surfac	Fauna, bone, miscellaneous	97.59.1.0.2	FS#6	1
1	Surfac	Coal slag	97.59.1.0.7	FS#6	3
1	Surfac	Coal	97.59.1.0.6	FS#6	4
1	Surfac	Slate	97.59.1.0.5	FS#6	4
1	Surfac	Flora, wood	97.59.1.0.3	FS#6	2
1	Surfac	Mortar	97.59.1.0.4	FS#6	9
1	Surfac	Brick	97.59.1.0.1	FS#6	5
2	1	Plaster	97.59.2.1.18	FS#2/F2/microdata	30
2	1	Microdata debris	97.59.2.1.11	FS#37/F2/microdata	-
2	1	Fauna, shell, oyster	97.59.2.1.16	FS#2/F2/microdata	1
2	1	Microdata debris	97.59.2.1.12	FS#2/F2/microdata	-
2	1	Brick	97.59.2.1.19	FS#2/F2/microdata	18
2	1	Metal, slag	97.59.2.1.10	FS#37/F2/microdata	1
2	1	Metal slag	97.59.2.1.13	FS#2/F2/microdata	4
2	1	Mortar	97.59.2.1.1	F2/FS#30	17
2	1	Slate	97.59.2.1.2	F2/FS#30	6
2	1	Coal	97.59.2.1.5	F2/FS#30	2
2	1	Flora, wood	97.59.2.1.20	FS#2/F2/microdata	1
2	1	Flora, charcoal	97.59.2.1.6	F2/FS#30	1
2	1	Mortar	97.59.2.1.7	FS#37/F2/microdata	6
2	1	Coal	97.59.2.1.14	FS#2/F2/microdata	4
2	1	Slate	97.59.2.1.9	FS#37/F2/microdata	2
2	1	Coal slag	97.59.2.1.15	FS#2/F2/microdata	10
2	1	Brick	97.59.2.1.4	F2/FS#30	12
2	1	Glass, window pane, aqua	97.59.2.1.3	F2/FS#30	1
2	1	Slate	97.59.2.1.17	FS#2/F2/microdata	3
2	1	Brick	97.59.2.1.8	FS#37/F2/microdata	8
2	2	Glass, container, body, clear	97.59.2.2.22	FS#3/microdata	2
2	2	Coal	97.59.2.2.19	FS#3/microdata	18
2	2	Flora, wood, charcoal	97.59.2.2.3	FS#12	11
2	2	Microdata debris	97.59.2.2.17	FS#3/microdata	-
2	2	Mortar	97.59.2.2.16	FS#12	2
2	2	Mortar	97.59.2.2.25	F2/FS#31	5
2	2	Flora, wood, bone	97.59.2.2.20	FS#3/microdata	11
2	2	Brick, hand-made	97.59.2.2.2	FS#12	7
2	2	Yellowware? unglazed, flower pot	97.59.2.2.21	FS#3/microdata	1
2	2	Coal slag	97.59.2.2.26	F2/FS#31	2
2	2	Flora, wood	97.59.2.2.8	FS#12	2
2	2	Architectural, sandstone	97.59.2.2.13	FS#12	2
2	2	Metal, unidentified	97.59.2.2.12	FS#12	1
2	2	Floral wood, burned	97.59.2.2.7	FS#12	3

Appendix 1: Material Culture Recovered from the President Benjamin Harrison Home

UNIT	LEVEL ID		NUMBER	COMMENTS	QTY
2	2	Fauna, bone, miscellaneous	97.59.2.2.18	FS#3/microdata	4
2	2	Coal	97.59.2.2.14	FS#12	2
2	2	Brick, machine made	97.59.2.2.10	FS#12	14
2	2	Metal, nails, unidentified	97.59.2.2.1	FS#12	32
2	2	Brick	97.59.2.2.23	FS#3/microdata	6
2	2	Coal	97.59.2.2.29	FS#28/F2	3
2	2	Glass, window pane, aqua	97.59.2.2.4	FS#12	8
2	2	Gravel	97.59.2.2.27	FS#28/F2	-
2	2	Metal, flat, unidentified	97.59.2.2.9	FS#12	7
2	2	Faunal, bone, miscellaneous	97.59.2.2.5	FS#12	5
2	2	Glass, bottle, lip/neck/shoulder/body, clear	97.59.2.2.11	FS#12	3
2	2	Slate	97.59.2.2.24	F2/FS#31	9
2	2	Metal, unidentified	97.59.2.2.15	FS#12	1
2	2	Earthenware, coarse, rim, red with bright red glaze	97.59.2.2.6	FS#12	1
2	2	Mortar	97.59.2.2.28	FS#28/F2	1
2	3	Flora, wood	97.59.2.3.23	FS#39/F2/microdata	7
2	3	Fauna, bone, miscellaneous	97.59.2.3.15	FS#25	2
2	3	Slate	97.59.2.3.24	FS#39/F2/microdata	17
2	3	Glass, container, body, clear	97.59.2.3.22	FS#39/F2/microdata	2
2	3	Metal, nails, miscellaneous	97.59.2.3.31	FS#32/F2	8
2	3	Clinkers	97.59.2.3.12	FS#25	3
2	3	Mortar	97.59.2.3.20	FS#39/F2/microdata	6
2	3	Microdata debris	97.59.2.3.17	F2/FS#39/microdata	-
2	3	Metal, nails, miscellaneous	97.59.2.3.3	FS#28	6
2	3	Coal slag	97.59.2.3.10	FS#28	2
2	3	Mortar	97.59.2.3.1	FS#28	1
2	3	Mortar	97.59.2.3.14	FS#25	3
2	3	Redware, glazed, drain tile	97.59.2.3.8	FS#28	1
2	3	Slate	97.59.2.3.25	FS#32/F2	23
2	3	Brick	97.59.2.3.2	FS#28	3
2	3	Brick	97.59.2.3.21	FS#39/F2/microdata	6
2	3	Fauna, bone, miscellaneous	97.59.2.3.29	FS#32/F2	2
2	3	Metal, slag	97.59.2.3.18	FS#39/F2/microdata	23
2	3	Flora, wood, burned	97.59.2.3.27	FS#32/F2	8
2	3	Fauna, bone, miscellaneous	97.59.2.3.6	FS#28	9
2	3	Redware, unglazed, drain tile	97.59.2.3.26	FS#32/F2	1
2	3	Flora, wood, burned	97.59.2.3.4	FS#28	7
2	3	Coal slag	97.59.2.3.19	FS#39/F2/microdata	13
2	3	Ceramic, chimney flue	97.59.2.3.30	FS#32/F2	1
2	3	Metal, tin, molded, unidentified	97.59.2.3.5	FS#28	8
2	3	Brick	97.59.2.3.28	FS#32/F2	4
2	3	Glass, window pane, aqua	97.59.2.3.7	FS#28	1
2	3	Metal, nails, unidentified	97.59.2.3.13	FS#25	7
2	3	Mortar	97.59.2.3.33	FS#32/F2	2
2	3	Glass, window pane, aqua	97.59.2.3.16	FS#25	1
2	3	Brick	97.59.2.3.11	FS#25	9
2	3	Coal	97.59.2.3.9	FS#28	3
2	3	Metal, slag	97.59.2.3.32	FS#32/F2	4
2	4	Flora, wood	97.59.2.4.15	FS#29	4
2	4	Mortar, burned	97.59.2.4.5	FS#33/F2	3
2	4	Coal slag	97.59.2.4.4	FS#33/F2	2
2	4	Coal slag	97.59.2.4.17	FS#29	4
2	4	Iron, unidentified	97.59.2.4.11	FS#33/F2	1
2	4	Glass, container, body, clear	97.59.2.4.19	FS#29	1
2	4	Flora, wood, burned	97.59.2.4.16	FS#29	5
2	4	Mortar, burned	97.59.2.4.3	FS#33/F2	7
2	4	Brick	97.59.2.4.13	FS#29	8
2	4	Plaster	97.59.2.4.18	FS#29	11
2	4	Flora, wood, burned	97.59.2.4.2	FS#33/F2	7
2	4	Metal, unidentified, burned	97.59.2.4.7	FS#33/F2	2

Appendix 1: Material Culture Recovered from the President Benjamin Harrison Home

UNIT	LEVEL ID	NUMBER	COMMENTS	QTY
2	4	97.59.2.4.6	FS#33/F2	1
2	4	97.59.2.4.12	FS#29	47
2	4	97.59.2.4.9	FS#33/F2	1
2	4	97.59.2.4.8	FS#33/F2	1
2	4	97.59.2.4.1	FS#33/F2	11
2	4	97.59.2.4.10	FS#33/F2	2
2	4	97.59.2.4.14	FS#29	6
2	5	97.59.2.5.15	FS#41/F2/microdata	3
2	5	97.59.2.5.13	FS#41/F2/microdata	5
2	5	97.59.2.5.1	FS#36/F2	5
2	5	97.59.2.5.8	FS#42	2
2	5	97.59.2.5.11	FS#41/F2/microdata	40
2	5	97.59.2.5.3	FS#36/F2	2
2	5	97.59.2.5.16	FS#41/F2/microdata	15
2	5	97.59.2.5.6	FS#34/F2	15
2	5	97.59.2.5.2	FS#36/F2	10
2	5	97.59.2.5.19	FS#41/F2/microdata	3
2	5	97.59.2.5.17	FS#41/F2/microdata	5
2	5	97.59.2.5.14	FS#41/F2/microdata	10
2	5	97.59.2.5.10	FS#41/F2/microdata	-
2	5	97.59.2.5.4	FS#36/F2	2
2	5	97.59.2.5.9	FS#42	4
2	5	97.59.2.5.5	FS#34/F2	1
2	5	97.59.2.5.12	FS#41/F2/microdata	5
2	5	97.59.2.5.7	FS#57	1
2	5	97.59.2.5.18	FS#41/F2/microdata	3
2	6	97.59.2.6.2	F2/FS#65	12
2	6	97.59.2.6.14	FS#74/F2/microdata	2
2	6	97.59.2.6.24	FS#72/F2/microdata	1
2	6	97.59.2.6.18	FS#72/F2/microdata	25
2	6	97.59.2.6.25	FS#59	7
2	6	97.59.2.6.5	F2/FS#65	9
2	6	97.59.2.6.7	F2/FS#65	4
2	6	97.59.2.6.12	F2/FS#65	1
2	6	97.59.2.6.4	F2/FS#65	2
2	6	97.59.2.6.9	F2/FS#65	1
2	6	97.59.2.6.21	FS#72/F2/microdata	5
2	6	97.59.2.6.10	F2/FS#65	2
2	6	97.59.2.6.1	F2/FS#65	43
2	6	97.59.2.6.17	FS#74/F2/microdata	1
2	6	97.59.2.6.11	F2/FS#65	1
2	6	97.59.2.6.22	FS#72/F2/microdata	2
2	6	97.59.2.6.16	FS#74/F2/microdata	10
2	6	97.59.2.6.3	F2/FS#65	31
2	6	97.59.2.6.19	FS#72/F2/microdata	3
2	6	97.59.2.6.15	FS#74/F2/microdata	-
2	6	97.59.2.6.8	F2/FS#65	2
2	6	97.59.2.6.13	FS#74/F2/microdata	35
2	6	97.59.2.6.23	FS#72/F2/microdata	2
2	6	97.59.2.6.20	FS#72/F2/microdata	3
2	6	97.59.2.6.6	F2/FS#65	8
2	7	97.59.2.7.2	FS#84/F2	5
2	7	97.59.2.7.1	FS#84/F2	1
3	1	97.59.3.1.23	FS#20/F3/microdata	14
3	1	97.59.3.1.18	FS#18	1
3	1	97.59.3.1.2	FS#18	65
3	1	97.59.3.1.46	FS#17/F3	1
3	1	97.59.3.1.19	FS#18	1
3	1	97.59.3.1.29	FS#17/F3	50
3	1	97.59.3.1.30	FS#17/F3	30

Appendix 1: Material Culture Recovered from the President Benjamin Harrison Home

<u>UNIT</u>	<u>LEVEL</u>	<u>ID</u>	<u>NUMBER</u>	<u>COMMENTS</u>	<u>QTY</u>
3	1	Metal, circular, unidentified	97.59.3.1.38	FS#17/F3	1
3	1	Glass, container, body, aqua	97.59.3.1.28	FS#20/F3/microdata	1
3	1	Ceramic, insulator, white	97.59.3.1.36	FS#17/F3	1
3	1	Glass, frosted, tableware, body, clear	97.59.3.1.10	FS#18	4
3	1	Ceramic, insulator, white	97.59.3.1.15	FS#18	2
3	1	Coal	97.59.3.1.25	FS#20/F3/microdata	37
3	1	Coal	97.59.3.1.42	FS#17/F3	25
3	1	Coal slag	97.59.3.1.24	FS#20/F3/microdata	9
3	1	Flora, wood, burned	97.59.3.1.47	FS#17/F3	1
3	1	Mortar	97.59.3.1.12	FS#18	2
3	1	Whiteware, body, hollow/handle	97.59.3.1.16	FS#18	3
3	1	Glass, bottle, body, molded, clear	97.59.3.1.43	FS#17/F3	9
3	1	Flora, wood, burned	97.59.3.1.21	FS#20/F3/microdata	5
3	1	Flora, charcoal	97.59.3.1.11	FS#18	6
3	1	Metal, unidentified	97.59.3.1.39	FS#17/F3	1
3	1	Fauna, bone, miscellaneous	97.59.3.1.22	FS#20/F3/microdata	7
3	1	Slate	97.59.3.1.5	FS#18	4
3	1	Metal, ammunition, bullet? with threaded end	97.59.3.1.34	FS#17/F3	1
3	1	Fauna, shell, oyster	97.59.3.1.37	FS#17/F3	1
3	1	Glass, bottle, body, embossed, aqua	97.59.3.1.3	FS#18	5
3	1	Brick	97.59.3.1.4	FS#18	4
3	1	Glass, bottle, body/base, clear	97.59.3.1.7	FS#18	8
3	1	Brick	97.59.3.1.31	FS#17/F3	16
3	1	Flora, wood	97.59.3.1.13	FS#18	4
3	1	Flora, wood	97.59.3.1.35	FS#17/F3	6
3	1	Glass, window pane, clear	97.59.3.1.44	FS#17/F3	7
3	1	Glass, window pane, aqua	97.59.3.1.6	FS#18	2
3	1	Glass, bottle, medicine, body/base, clear	97.59.3.1.9	FS#18	2
3	1	Metal, iron, unidentified	97.59.3.1.17	FS#18	2
3	1	Flora, wood	97.59.3.1.26	FS#20/F3/microdata	14
3	1	Slate	97.59.3.1.33	FS#17/F3	6
3	1	Glass, window pane, aqua	97.59.3.1.45	FS#17/F3	1
3	1	Glass, window pane, aqua	97.59.3.1.41	FS#17/F3	3
3	1	Microdata debris	97.59.3.1.20	FS#20/F3/microdata	-
3	1	Mortar	97.59.3.1.27	FS#20/F3/microdata	5
3	1	Mortar	97.59.3.1.32	FS#17/F3	20
3	1	Coal	97.59.3.1.8	FS#18	8
3	1	Mortar	97.59.3.1.48	FS#17/F3	1
3	1	Metal, ring, washer	97.59.3.1.14	FS#18	1
3	1	Clinkers	97.59.3.1.40	FS#17/F3	9
3	1	Fauna, bone, miscellaneous	97.59.3.1.1	FS#18	47
3	2	Whiteware, rim, transfer print green w/ gold annular	97.59.3.2.23	FS#52	1
3	2	Metal, ring, unidentified	97.59.3.2.21	FS#52	1
3	2	Glass, bottle, body, clear	97.59.3.2.38	FS#51	7
3	2	Whiteware, body, undecorated	97.59.3.2.37	FS#51	1
3	2	Ceramic, insulator, white	97.59.3.2.22	FS#52	1
3	2	Glass, bulb, clear	97.59.3.2.11	FS#52	3
3	2	Glass, container, rim, pressed, clear	97.59.3.2.9	FS#52	1
3	2	Metal, nails, miscellaneous	97.59.3.2.1	FS#52	55
3	2	Glass, container, body, clear	97.59.3.2.10	FS#52	14
3	2	Metal, unidentified	97.59.3.2.24	FS#52	4
3	2	Glass, container, body, amber	97.59.3.2.4	FS#52	1
3	2	Flora, wood	97.59.3.2.17	FS#52	5
3	2	Fauna, bone, miscellaneous	97.59.3.2.3	FS#52	118
3	2	Plaster	97.59.3.2.25	FS#52	1
3	2	Glass, bottle, lip/collar/neck, aqua	97.59.3.2.44	FS#51	3
3	2	Fauna, bone, miscellaneous	97.59.3.2.28	FS#51	33
3	2	Glass, window pane, clear	97.59.3.2.35	FS#51	1
3	2	Flora, seed, pod	97.59.3.2.42	FS#51	1
3	2	Metal, nail, brad	97.59.3.2.16	FS#52	1

Appendix 1: Material Culture Recovered from the President Benjamin Harrison Home

<u>UNIT</u>	<u>LEVEL</u>	<u>ID</u>	<u>NUMBER</u>	<u>COMMENTS</u>	<u>QTY</u>
3	2	Metal, iron, slag	97.59.3.2.39	FS#51	1
3	2	Brick	97.59.3.2.5	FS#52	8
3	2	Coal	97.59.3.2.13	FS#52	2
3	2	Glass, container, body, embossed, clear	97.59.3.2.18	FS#52	1
3	2	Brick	97.59.3.2.29	FS#51	5
3	2	Glass, drinking glass, base/body/rim, clear	97.59.3.2.6	FS#52	1
3	2	Glass, window pane, aqua	97.59.3.2.12	FS#52	4
3	2	Metal, ammunition, shell casing, unidentified gauge	97.59.3.2.26	FS#52	1
3	2	Glass, bottle, body/shoulder, mold seam, lt green	97.59.3.2.8	FS#52	1
3	2	Coal slag	97.59.3.2.14	FS#52	2
3	2	Metal, washer	97.59.3.2.2	FS#52	1
3	2	Flora, charcoal	97.59.3.2.31	FS#51	4
3	2	Metal, chain, link	97.59.3.2.15	FS#52	1
3	2	Glass, bottle, body, amber	97.59.3.2.33	FS#51	2
3	2	Flora, wood	97.59.3.2.30	FS#51	9
3	2	Mortar	97.59.3.2.27	FS#51	5
3	2	Leather	97.59.3.2.32	FS#51	1
3	2	Redware, unglazed, flower pot	97.59.3.2.20	FS#52	3
3	2	Mortar	97.59.3.2.19	FS#52	13
3	2	Glass, drinking glass, rim/body, texture, clear	97.59.3.2.7	FS#52	1
3	2	Metal, nails, miscellaneous	97.59.3.2.40	FS#51	19
3	2	Glass, window pane, aqua	97.59.3.2.34	FS#51	1
3	2	Glass, tableware, body, frosted, clear	97.59.3.2.36	FS#51	1
3	2	Metal, chain, link	97.59.3.2.43	FS#51	1
3	2	Metal, escutcheon	97.59.3.2.41	FS#51	1
3	3	Plastic, tine?, brown	97.59.3.3.12	FS#53/F3	1
3	3	Redware, unglazed, flower pot	97.59.3.3.52	FS#54/F3	2
3	3	Whiteware, transfer print, flow blue	97.59.3.3.32	FS#53/F3	1
3	3	Metal, washer	97.59.3.3.49	FS#54/F3	1
3	3	Glass, container, body, clear	97.59.3.3.31	FS#53/F3	1
3	3	Glass, bottle, body, clear	97.59.3.3.27	FS#53/F3	23
3	3	Metal, button cover	97.59.3.3.17	FS#53/F3	1
3	3	Glass, body, light amber	97.59.3.3.11	FS#53/F3	1
3	3	Synthetic, tine?, black	97.59.3.3.10	FS#53/F3	1
3	3	Slag	97.59.3.3.58	FS#54/F3	1
3	3	Mortar	97.59.3.3.15	FS#53/F3	11
3	3	Metal, unidentified	97.59.3.3.2	FS#53/F3	3
3	3	Fauna, bone, miscellaneous	97.59.3.3.35	FS#53/F3	53
3	3	Glass, bulb, clear	97.59.3.3.46	FS#54/F3	2
3	3	Coal slag	97.59.3.3.25	FS#53/F3	32
3	3	Glass, bowl?, rim/body, clear	97.59.3.3.37	FS#54/F3	3
3	3	Metal, nails, miscellaneous	97.59.3.3.47	FS#54/F3	37
3	3	Brick	97.59.3.3.19	FS#53/F3	6
3	3	Metal, wire, coiled	97.59.3.3.29	FS#53/F3	1
3	3	Glass, body, clear, miscellaneous	97.59.3.3.44	FS#54/F3	12
3	3	Metal, threaded, connector btw nozzle & hose	97.59.3.3.13	FS#53/F3	1
3	3	Slag	97.59.3.3.24	FS#53/F3	6
3	3	Glass, container, body, embossed, lt green	97.59.3.3.43	FS#54/F3	1
3	3	Coal slag	97.59.3.3.55	FS#54/F3	4
3	3	Plastic, hair decoration, brown	97.59.3.3.50	FS#54/F3	1
3	3	Flora, wood	97.59.3.3.57	FS#54/F3	1
3	3	Metal, nail, unidentified	97.59.3.3.64	FS#55	1
3	3	Metal, washer?	97.59.3.3.30	FS#53/F3	1
3	3	Glass, window pane, clear	97.59.3.3.28	FS#53/F3	1
3	3	Metal, carriage, fender	97.59.3.3.63	FS#55	1
3	3	Glass, bottle, body, embossed, aqua	97.59.3.3.36	FS#54/F3	4
3	3	Glass, container, body, amber	97.59.3.3.38	FS#54/F3	1
3	3	Glaze, exfoliated, whiteware?	97.59.3.3.34	FS#53/F3	1
3	3	Fauna, bone, miscellaneous	97.59.3.3.53	FS#54/F3	41
3	3	Glass, container, body, amber	97.59.3.3.9	FS#53/F3	1

Appendix 1: Material Culture Recovered from the President Benjamin Harrison Home

<u>UNIT</u>	<u>LEVEL</u>	<u>ID</u>	<u>NUMBER</u>	<u>COMMENTS</u>	<u>QTY</u>
3	3	Metal, washer?	97.59.3.3.8	FS#53/F3	1
3	3	Metal/synthetic, wire, casing	97.59.3.3.6	FS#53/F3	1
3	3	Glass, window pane, aqua	97.59.3.3.40	FS#54/F3	3
3	3	Glass, container, body, aqua	97.59.3.3.41	FS#54/F3	1
3	3	Metal, hook?	97.59.3.3.21	FS#53/F3	1
3	3	Brick	97.59.3.3.59	FS#54/F3	1
3	3	Glass, body, scalloped?, clear	97.59.3.3.45	FS#54/F3	1
3	3	Flora, wood	97.59.3.3.18	FS#53/F3	16
3	3	Plaster	97.59.3.3.16	FS#53/F3	5
3	3	Redware, unglazed, flower pot	97.59.3.3.14	FS#53/F3	3
3	3	Plaster	97.59.3.3.54	FS#54/F3	5
3	3	Glass, window pane, aqua	97.59.3.3.5	FS#53/F3	8
3	3	Metal, horseshoe	97.59.3.3.62	FS#54/F3	1
3	3	Glass, bottle, lip/neck, machine made, aqua	97.59.3.3.4	FS#53/F3	1
3	3	Metal, lead?	97.59.3.3.33	FS#53/F3	2
3	3	Metal, bracelet?, link	97.59.3.3.51	FS#54/F3	1
3	3	Glass, bottle, body/base, embossed, MM, aqua	97.59.3.3.61	FS#54/F3	1
3	3	Glass, bottle, lip/neck, amber	97.59.3.3.39	FS#54/F3	1
3	3	Metal, nails, miscellaneous	97.59.3.3.26	FS#53/F3	97
3	3	Glass, window pane, clear	97.59.3.3.42	FS#54/F3	1
3	3	Coal	97.59.3.3.20	FS#53/F3	5
3	3	Yellowware? unglazed, flower pot	97.59.3.3.56	FS#54/F3	1
3	3	Metal, wire	97.59.3.3.22	FS#53/F3	13
3	3	Metal, handle	97.59.3.3.48	FS#54/F3	1
3	3	Glass, bottle, body, embossed, aqua	97.59.3.3.3	FS#53/F3	6
3	3	Fauna, shell, button, 2-hole	97.59.3.3.1	FS#53/F3	1
3	3	Glass, bulb, clear	97.59.3.3.7	FS#53/F3	9
3	3	Nail fused to stone	97.59.3.3.60	FS#54/F3	1
3	3	Clinker	97.59.3.3.23	FS#53/F3	9
3	4	Glass, drinking glass, rim/body, textured, clear	97.59.3.4.27	FS#68/F3	1
3	4	Redware, unglazed, flower pot	97.59.3.4.22	FS#47/F3	1
3	4	Brick	97.59.3.4.69	FS#70/F3	3
3	4	Metal, scalloped, unidentified	97.59.3.4.42	FS#68/F3	2
3	4	Glass, container, body, aqua	97.59.3.4.32	FS#68/F3	4
3	4	Glass, bottle, unidentified, amber	97.59.3.4.90	FS#76/F3/mircodata	1
3	4	Fauna, bone, miscellaneous	97.59.3.4.58	FS#70/F3	35
3	4	Plaster	97.59.3.4.9	FS#69/F3	1
3	4	Metal, unidentified	97.59.3.4.40	FS#68/F3	3
3	4	Metal, button, shank	97.59.3.4.73	FS#70/F3	1
3	4	Glass, container, body, clear	97.59.3.4.18	FS#47/F3	3
3	4	Coal	97.59.3.4.84	FS#76/F3/mircodata	25
3	4	Metal, tack	97.59.3.4.75	FS#70/F3	1
3	4	Metal, nail, unidentified	97.59.3.4.85	FS#76/F3/mircodata	4
3	4	Glass, window pane, aqua	97.59.3.4.26	FS#68/F3	3
3	4	Glass, container, body, clear	97.59.3.4.31	FS#68/F3	7
3	4	Leather, unidentified	97.59.3.4.72	FS#70/F3	1
3	4	Fauna, bone, miscellaneous	97.59.3.4.8	FS#69/F3	11
3	4	Metal, rim, unidentified	97.59.3.4.41	FS#68/F3	1
3	4	Glass, drinking glass, rim/body, textured, clear	97.59.3.4.17	FS#47/F3	1
3	4	Glass, bottle, body, amber	97.59.3.4.49	FS#48	1
3	4	Glass, container, body, clear	97.59.3.4.33	FS#68/F3	1
3	4	Fauna, shell, egg	97.59.3.4.86	FS#76/F3/mircodata	5
3	4	Glass, bottle, body, embossed, clear	97.59.3.4.53	FS#48	4
3	4	Brick	97.59.3.4.57	FS#48	9
3	4	Metal, coil	97.59.3.4.36	FS#68/F3	1
3	4	Flora, wood	97.59.3.4.61	FS#70/F3	1
3	4	Glass, container, body, aqua	97.59.3.4.13	FS#47/F3	2
3	4	Coal	97.59.3.4.70	FS#70/F3	6
3	4	Flora, wood	97.59.3.4.4	FS#69/F3	2
3	4	Metal, unidentified	97.59.3.4.23	FS#47/F3	2

Appendix 1: Material Culture Recovered from the President Benjamin Harrison Home

<u>UNIT</u>	<u>LEVEL ID</u>		<u>NUMBER</u>	<u>COMMENTS</u>	<u>QTY</u>
3	4	Flora, wood	97.59.3.4.24	FS#47/F3	1
3	4	Coal	97.59.3.4.54	FS#48	2
3	4	Flora, charcoal	97.59.3.4.55	FS#48	10
3	4	Coal	97.59.3.4.6	FS#69/F3	6
3	4	Flora, wood	97.59.3.4.91	FS#76/F3/microdata	15
3	4	Glass, tableware, body, clear	97.59.3.4.51	FS#48	2
3	4	Glass, stemware, rim/body/stem/base, clear	97.59.3.4.67	FS#70/F3	2
3	4	Glass, container, body, clear	97.59.3.4.7	FS#69/F3	2
3	4	Glass, container, shoulder/body, clear	97.59.3.4.28	FS#68/F3	1
3	4	Porcelain, unidentified	97.59.3.4.87	FS#76/F3/mircodata	1
3	4	Metal, washers	97.59.3.4.35	FS#68/F3	2
3	4	Glass, bottle, neck/collar, frosted, clear	97.59.3.4.65	FS#70/F3	4
3	4	Paper, tissue?	97.59.3.4.37	FS#68/F3	1
3	4	Mortar	97.59.3.4.79	FS#76/F3/mircodata	25
3	4	Mortar	97.59.3.4.50	FS#48	8
3	4	Fauna, bone, miscellaneous	97.59.3.4.88	FS#76/F3/mircodata	9
3	4	Glass, drinking glass, rim/body, clear	97.59.3.4.29	FS#68/F3	1
3	4	Glass, window pane, aqua	97.59.3.4.48	FS#48	2
3	4	Flora, wood, burned	97.59.3.4.56	FS#48	2
3	4	Glass, bottle, body, amber	97.59.3.4.38	FS#68/F3	3
3	4	Brick	97.59.3.4.2	FS#69/F3	1
3	4	Coal slag	97.59.3.4.3	FS#69/F3	2
3	4	Metal, wire	97.59.3.4.45	FS#75/F3	1
3	4	Mortar	97.59.3.4.59	FS#70/F3	10
3	4	Coal slag	97.59.3.4.16	FS#47/F3	2
3	4	Stoneware, body, salt glazed ext/Albany glazed int	97.59.3.4.34	FS#68/F3	1
3	4	Flora, wood, burned	97.59.3.4.60	FS#70/F3	12
3	4	Glass, drinking glass, rim/body, pressed, clear	97.59.3.4.52	FS#48	1
3	4	Microdata debris <4.699mm	97.59.3.4.81	FS#76/F3/mircodata	-
3	4	Metal, nail, miscellaneous	97.59.3.4.47	FS#48	16
3	4	Metal, unidentified	97.59.3.4.10	FS#69/F3	1
3	4	Brick	97.59.3.4.82	FS#76/F3/mircodata	8
3	4	Glass, window pane, aqua	97.59.3.4.64	FS#70/F3	12
3	4	Glass, bottle, body, clear	97.59.3.4.66	FS#70/F3	3
3	4	Microdata debris >4.699mm	97.59.3.4.80	FS#76/F3/mircodata	-
3	4	Plaster	97.59.3.4.21	FS#47/F3	4
3	4	Metal, nails, miscellaneous	97.59.3.4.12	FS#69/F3	15
3	4	Yellowware?, unglazed, flower pot	97.59.3.4.11	FS#69/F3	1
3	4	Glass, window pane, clear	97.59.3.4.5	FS#69/F3	3
3	4	Metal, nails, miscellaneous	97.59.3.4.15	FS#47/F3	5
3	4	Glass, container, body/base, clear	97.59.3.4.30	FS#68/F3	1
3	4	Fauna, bone, miscellaneous	97.59.3.4.46	FS#48	19
3	4	Charcoal	97.59.3.4.14	FS#47/F3	4
3	4	Glass, bottle, body, embossed, aqua	97.59.3.4.63	FS#70/F3	20
3	4	Metal, garden hose, connector	97.59.3.4.78	FS#70/F3	1
3	4	Earthenware, coarse, hollow, brown glaze	97.59.3.4.91	FS#76/F3/mircodata	1
3	4	Redware?, drain tile?	97.59.3.4.19	FS#47/F3	1
3	4	Metal, nails, miscellaneous	97.59.3.4.39	FS#68/F3	43
3	4	Fauna, bone, charred	97.59.3.4.62	FS#70/F3	2
3	4	Fauna, bone, miscellaneous	97.59.3.4.44	FS#68/F3	18
3	4	Metal, nails, miscellaneous	97.59.3.4.71	FS#70/F3	92
3	4	Metal, wire	97.59.3.4.74	FS#70/F3	1
3	4	Fauna, bone, miscellaneous	97.59.3.4.25	FS#47/F3	18
3	4	Metal, screwdriver	97.59.3.4.77	FS#70/F3	1
3	4	Glass, bottle, body/base, embossed, MM, clear	97.59.3.4.1	FS#69/F3	1
3	4	Glass, bottle, body or base?, clear	97.59.3.4.89	FS#76/F3/mircodata	1
3	4	Porcelain, rim, gilded, hand-painted	97.59.3.4.43	FS#68/F3	1
3	4	Glass, tableware, body, frosted, clear	97.59.3.4.68	FS#70/F3	4
3	4	Brick with mortar	97.59.3.4.20	FS#47/F3	1
3	4	Metal, threaded, curved, unidentified	97.59.3.4.76	FS#70/F3	1

Appendix 1: Material Culture Recovered from the President Benjamin Harrison Home

<u>UNIT</u>	<u>LEVEL</u>	<u>ID</u>	<u>NUMBER</u>	<u>COMMENTS</u>	<u>QTY</u>
3	4	Coal slag and clinkers	97.59.3.4.83	FS#76/F3/microdata	10
3	5	Glass, bottle, body, aqua	97.59.3.5.63	FS#66	1
3	5	Fauna, bone, miscellaneous	97.59.3.5.36	FS#71/F3	22
3	5	Metal, nail, unidentified	97.59.3.5.57	FS#66	8
3	5	Glass, window pane, clear	97.59.3.5.29	FS#71/F3	2
3	5	Glass, container, body, aqua	97.59.3.5.51	FS#77/F3/microdata	1
3	5	Mortar with nail	97.59.3.5.30	FS#71/F3	1
3	5	Brick	97.59.3.5.56	FS#66	7
3	5	Metal, horse shoe	97.59.3.5.52	F3 exterior/FS#64	1
3	5	Metal, threaded hook, S-like shape, unidentified	97.59.3.5.33	FS#71/F3	1
3	5	Whiteware, body/base, embossed, transfer print, green	97.59.3.5.38	FS#71/F3	1
3	5	Fauna, bone, miscellaneous	97.59.3.5.46	FS#77/F3/microdata	15
3	5	Flora, wood	97.59.3.5.59	FS#66	8
3	5	Fauna, bone, miscellaneous	97.59.3.5.58	FS#66	6
3	5	Charcoal	97.59.3.5.60	FS#66	2
3	5	Glass, container, body, clear	97.59.3.5.43	FS#77/F3/microdata	2
3	5	Glass, drinking glass, pressed, etched, clear	97.59.3.5.37	FS#71/F3	1
3	5	Brick	97.59.3.5.23	FS#71/F3	4
3	5	Coal slag and clinkers	97.59.3.5.31	FS#71/F3	15
3	5	Flora, seed, pod	97.59.3.5.41	FS#77/F3/microdata	1
3	5	Metal, nails, miscellaneous/metal, unidentified	97.59.3.5.54	F3 exterior/FS#64	8
3	5	Metal, nails, miscellaneous	97.59.3.5.25	FS#71/F3	72
3	5	Redware, unglazed, flower pot	97.59.3.5.35	FS#71/F3	2
3	5	Metal, tin, foil	97.59.3.5.27	FS#71/F3	3
3	5	Mortar, burned	97.59.3.5.61	FS#66	4
3	5	Mortar	97.59.3.5.18	FS#71/F3	101
3	5	Metal, unidentified	97.59.3.5.55	FS#66	1
3	5	Glass, bottle, neck/collar/rim, frosted, clear	97.59.3.5.22	FS#71/F3	5
3	5	Flora, wood	97.59.3.5.19	FS#71/F3	16
3	5	Glass, bottle, body, amber	97.59.3.5.24	FS#71/F3	3
3	5	Metal, nail, wire	97.59.3.5.64	FS#66	1
3	5	Brick	97.59.3.5.48	FS#77/F3/microdata	12
3	5	Coal	97.59.3.5.32	FS#71/F3	10
3	5	Mortar	97.59.3.5.62	FS#66	2
3	5	Glass, bottle, body, embossed, aqua	97.59.3.5.20	FS#71/F3	10
3	5	Microdata debris	97.59.3.5.39	FS#77/F3/microdata	-
3	5	Plaster	97.59.3.5.47	FS#77/F3/microdata	22
3	5	Fauna, bone, miscellaneous	97.59.3.5.53	F3 exterior/FS#64	11
3	5	Glass, window pane, aqua	97.59.3.5.21	FS#71/F3	6
3	5	Metal, wire	97.59.3.5.34	FS#71/F3	1
3	5	Coal	97.59.3.5.44	FS#77/F3/microdata	19
3	5	Metal, slag	97.59.3.5.49	FS#77/F3/microdata	13
3	5	Fauna, bone, button, 2-holes	97.59.3.5.26	FS#71/F3	1
3	5	Flora, wood	97.59.3.5.42	FS#77/F3/microdata	8
3	5	Glass, tableware, body, frosted, clear	97.59.3.5.28	FS#71/F3	1
3	5	Coal slag	97.59.3.5.50	FS#77/F3/microdata	21
3	5	Fauna, egg shell	97.59.3.5.40	FS#77/F3/microdata	3
3	5	Metal, nails, miscellaneous	97.59.3.5.45	FS#77/F3/microdata	5
3	6	Metal, ammunition, .38 shell casing	97.59.3.6.14	FS#56/F3	1
3	6	Brick	97.59.3.6.15	FS#56/F3	2
3	6	Glass, tableware, rim/body, clear	97.59.3.6.12	FS#56/F3	8
3	6	Coal slag	97.59.3.6.38	FS#104/F3	11
3	6	Fauna, shell, button, 4-hole	97.59.3.6.3	FS#61	1
3	6	Metal, carriage fender with bone	97.59.3.6.16	FS#56/F3	1
3	6	Brick	97.59.3.6.22	FS#108	1
3	6	Metal, melted	97.59.3.6.27	FS#108	1
3	6	Metal, nails, miscellaneous	97.59.3.6.13	FS#56/F3	24
3	6	Mortar	97.59.3.6.2	FS#61	1
3	6	Brick	97.59.3.6.34	FS#104/F3	1
3	6	Flora, wood	97.59.3.6.37	FS#104/F3	6

Appendix 1: Material Culture Recovered from the President Benjamin Harrison Home

<u>UNIT</u>	<u>LEVEL ID</u>		<u>NUMBER</u>	<u>COMMENTS</u>	<u>QTY</u>
3	6	Redware, glazed, drain tile	97.59.3.6.20	FS#108	1
3	6	Flora, charcoal	97.59.3.6.24	FS#108	2
3	6	Plaster	97.59.3.6.31	FS#104/F3	1
3	6	Metal/glass, light bulb	97.59.3.6.32	FS#104/F3	1
3	6	Metal, screw	97.59.3.6.33	FS#104/F3	1
3	6	Flora, wood	97.59.3.6.8	FS#56/F3	2
3	6	Metal, nails, miscellaneous	97.59.3.6.17	FS#108	6
3	6	Metal, slag	97.59.3.6.25	FS#108	4
3	6	Fauna, bone, miscellaneous	97.59.3.6.30	FS#104/F3	20
3	6	Glass, container, body, clear	97.59.3.6.36	FS#104/F3	1
3	6	Metal, unidentified	97.59.3.6.5	FS#61	5
3	6	Flora, wood, burned	97.59.3.6.28	FS#108	2
3	6	Glass, drinking glass, body, aqua	97.59.3.6.7	FS#61	1
3	6	Glass, bulb, clear	97.59.3.6.35	FS#104/F3	1
3	6	Metal, fabric, unidentified	97.59.3.6.6	FS#61	1
3	6	Glass, window pane, aqua	97.59.3.6.21	FS#108	3
3	6	Glass, drinking glass, body/base, clear	97.59.3.6.1	FS#61	1
3	6	Metal, slag	97.59.3.6.39	FS#104/F3	1
3	6	Coal	97.59.3.6.9	FS#56/F3	5
3	6	Metal, nails, miscellaneous	97.59.3.6.29	FS#104/F3	19
3	6	Mortar	97.59.3.6.18	FS#108	6
3	6	Clinkers	97.59.3.6.23	FS#108	4
3	6	Fauna, bones, miscellaneous	97.59.3.6.19	FS#108	5
3	6	Glass, window pane, clear	97.59.3.6.26	FS#108	2
3	6	Fauna, bone, miscellaneous	97.59.3.6.4	FS#61	11
3	6	Mortar	97.59.3.6.11	FS#56/F3	3
3	6	Fauna, bone, miscellaneous	97.59.3.6.10	FS#56/F3	14
3	7	Plaster	97.59.3.7.1	FS#107	3
3	7	Charcoal	97.59.3.7.17	FS#107	1
3	7	Coal	97.59.3.7.16	FS#107	2
3	7	Glass, bottle, body, amber	97.59.3.7.4	FS#107	5
3	7	Glass, container, rim/body, clear	97.59.3.7.19	FS#107	1
3	7	Glass, bottle, whole, clear	97.59.3.7.8	FS#107	1
3	7	Unidentified, with pink?	97.59.3.7.14	FS#107	1
3	7	Mortar	97.59.3.7.11	FS#107	1
3	7	Fauna, bone, miscellaneous	97.59.3.7.22	FS#107	68
3	7	Glass, window pane, clear	97.59.3.7.2	FS#107	2
3	7	Metal, chain, links, bracelet?	97.59.3.7.9	FS#107	1
3	7	Glass, bottle, body, base, amber	97.59.3.7.7	FS#107	1
3	7	Flora, wood	97.59.3.7.13	FS#107	1
3	7	Glass, container, body, clear	97.59.3.7.6	FS#107	6
3	7	Redware, unglazed, flower pot	97.59.3.7.18	FS#107	1
3	7	Glass, window pane, aqua	97.59.3.7.3	FS#107	7
3	7	Glass, bulb, clear	97.59.3.7.20	FS#107	2
3	7	Metal, nails, miscellaneous	97.59.3.7.21	FS#107	42
3	7	Brick	97.59.3.7.5	FS#107	3
3	7	Coal slag	97.59.3.7.15	FS#107	2
3	7	Metal, screw head	97.59.3.7.12	FS#107	1
3	7	Glass, drinking glass, rim/body, clear	97.59.3.7.10	FS#107	1
4	1	Glass, container, body, clear	97.59.4.1.4	FS#114/microdata	2
4	1	Microdata debris	97.59.4.1.1	FS#114/microdata	-
4	1	Flora, wood, burned	97.59.4.1.3	FS#114/microdata	1
4	1	Coal slag	97.59.4.1.2	FS#114/microdata	23
4	1	Fauna, shell, miscellaneous	97.59.4.1.5	FS#114/microdata	3
4	2	Glass, bottle, body, embossed, clear	97.59.4.2.28	SW corner	1
4	2	Glass, bulb, clear	97.59.4.2.8	FS#49	2
4	2	Flora, wood	97.59.4.2.10	FS#49	2
4	2	Flora, wood, burned	97.59.4.2.12	FS#49	2
4	2	Brick	97.59.4.2.25	SW corner	8
4	2	Glass, window pane, aqua	97.59.4.2.20	FS#49	2

Appendix 1: Material Culture Recovered from the President Benjamin Harrison Home

UNIT	LEVEL	ID	NUMBER	COMMENTS	QTY
4	2	Glass, container, body, amethyst	97.59.4.2.22	FS#49	1
4	2	Earthenware, body, unidentified, red glaze	97.59.4.2.7	FS#49	1
4	2	Metal, nails, miscellaneous/metal, unidentified	97.59.4.2.2	FS#49	61
4	2	Redware, unglazed, flower pot	97.59.4.2.11	FS#49	3
4	2	Mortar	97.59.4.2.13	FS#49	1
4	2	Glass, container, body, clear	97.59.4.2.18	FS#49	1
4	2	Coal	97.59.4.2.15	FS#49	3
4	2	Glass, window pane, clear	97.59.4.2.21	FS#49	1
4	2	Microdata debris >4.699mm	97.59.4.2.24	SW corner	-
4	2	Brick, vitrified	97.59.4.2.16	FS#49	1
4	2	Whiteware, base, undecorated	97.59.4.2.23	FS#49	1
4	2	Tar	97.59.4.2.1	FS#49	14
4	2	Brick	97.59.4.2.19	FS#49	4
4	2	Whiteware, rim, transfer print, blue	97.59.4.2.9	FS#49	1
4	2	Coal slag	97.59.4.2.5	FS#49	16
4	2	Whiteware, body, undecorated	97.59.4.2.14	FS#49	4
4	2	Glass, bottle, body/base, square, clear	97.59.4.2.17	FS#49	1
4	2	Fauna, bone, miscellaneous	97.59.4.2.4	FS#49	4
4	2	Fauna, shell, oyster	97.59.4.2.3	FS#49	4
4	2	Glass, rod, clear	97.59.4.2.6	FS#49	1
4	2	Fauna, bone, miscellaneous	97.59.4.2.27	SW corner	9
4	2	Coal	97.59.4.2.29	SW corner	10
4	3	Ceramic, tobacco pipe	97.59.4.3.9	FS#50	3
4	3	Glass, container, body, aqua	97.59.4.3.11	FS#50	10
4	3	Glass, container, body, clear	97.59.4.3.8	FS#50	1
4	3	Fauna, shell, oyster	97.59.4.3.14	FS#50	4
4	3	Whiteware, body, undecorated	97.59.4.3.7	FS#50	3
4	3	Redware, body, decorative, unglazed, flower pot	97.59.4.3.3	FS#50	1
4	3	Metal, unidentified	97.59.4.3.10	FS#50	1
4	3	Plaster	97.59.4.3.5	FS#50	8
4	3	Brick	97.59.4.3.4	FS#50	2
4	3	Redware, rim, unglazed, flower pot	97.59.4.3.2	FS#50	1
4	3	Metal, nails, miscellaneous	97.59.4.3.1	FS#50	9
4	3	Redware, glazed, drain tile	97.59.4.3.12	FS#50	2
4	3	Fauna, bone, miscellaneous	97.59.4.3.6	FS#50	2
4	3	Coal slag	97.59.4.3.13	FS#50	5
5	1	Brick	97.59.5.1.77	FS#98/F5 exterior	16
5	1	Mortar	97.59.5.1.52	FS#82/F5	2
5	1	Redware, unglazed, flower pot	97.59.5.1.65	FS#80	20
5	1	Fauna, bone, miscellaneous	97.59.5.1.24	FS#83	20
5	1	Glass, bottle, body, aqua	97.59.5.1.37	FS#83	6
5	1	Clinkers	97.59.5.1.67	FS#80	3
5	1	Flora, wood	97.59.5.1.1	FS#81/F5	34
5	1	Glass, window pane, frosted, aqua	97.59.5.1.36	FS#83	2
5	1	Glass, clear, unidentified	97.59.5.1.15	FS#78/F5/microdata	1
5	1	Flora, wood	97.59.5.1.72	FS#80	9
5	1	Metal, slag	97.59.5.1.20	FS#80	7
5	1	Flora, wood	97.59.5.1.28	FS#83	16
5	1	Metal, nails, miscellaneous	97.59.5.1.48	FS#82/F5	4
5	1	Flora, wood	97.59.5.1.80	FS#98/F5 exterior	19
5	1	Slate	97.59.5.1.66	FS#80	10
5	1	Brick	97.59.5.1.11	FS#78/F5/microdata	15
5	1	Semi-porcelain, unidentified	97.59.5.1.17	FS#78/F5/microdata	1
5	1	Iron, slag	97.59.5.1.10	FS#78/F5/microdata	5
5	1	Coal	97.59.5.1.54	FS#82/F5	3
5	1	Whiteware, handle, hollow	97.59.5.1.18	FS#80	1
5	1	Whiteware, body/base, undecorated	97.59.5.1.38	FS#83	4
5	1	Coal	97.59.5.1.13	FS#78/F5/microdata	15
5	1	Coal slag and clinker	97.59.5.1.8	FS#78/F5/microdata	15
5	1	Fauna, bone, miscellaneous	97.59.5.1.2	FS#81/F5	15

Appendix 1: Material Culture Recovered from the President Benjamin Harrison Home

<u>UNIT</u>	<u>LEVEL</u>	<u>ID</u>	<u>NUMBER</u>	<u>COMMENTS</u>	<u>QTY</u>
5	1	Brick	97.59.5.1.49	FS#82/F5	7
5	1	Stoneware, body, clear lead glaze ext/Bristol int	97.59.5.1.74	FS#80	7
5	1	Coal	97.59.5.1.29	FS#83	14
5	1	Porcelain, body, undecorated	97.59.5.1.85	FS#98/F5 exterior	6
5	1	Metal, nails, miscellaneous	97.59.5.1.26	FS#83	35
5	1	Mortar	97.59.5.1.7	FS#78/F5/microdata	22
5	1	Metal, lead ring surrounding nail, unidentified	97.59.5.1.45	FS#83	1
5	1	Whiteware, body, transfer print, flow black	97.59.5.1.86	FS#98/F5 exterior	1
5	1	Glass, container, body, clear	97.59.5.1.84	FS#98/F5 exterior	2
5	1	Glass, bottle, body, clear, machine made	97.59.3.5.1	FS#67/F3	3
5	1	Glass, jar, collar, clear	97.59.5.1.43	FS#83	1
5	1	Coal	97.59.5.1.63	FS#99	2
5	1	Whiteware, body, transfer print, flow blue	97.59.5.1.35	FS#83	2
5	1	Fauna, bone, miscellaneous	97.59.5.1.81	FS#98/F5 exterior	9
5	1	Redware, unglazed, flower pot	97.59.5.1.50	FS#82/F5	6
5	1	Fauna, shell, oyster	97.59.5.1.75	FS#80	1
5	1	Metal, slag	97.59.5.1.82	FS#98/F5 exterior	5
5	1	Redware, glazed, drain tile	97.59.5.1.59	FS#82/F5	1
5	1	Tar, roofing	97.59.5.1.25	FS#83	21
5	1	Ceramic, insulator	97.59.3.5.16	FS#67/F3	1
5	1	Fauna, shell, oyster	97.59.5.1.55	FS#82/F5	2
5	1	Fauna, egg shell	97.59.5.1.34	FS#83	3
5	1	Redware, glazed, drain tile	97.59.5.1.21	FS#80	1
5	1	Metal, ballustrade top?, hollow	97.59.5.1.46	FS#83	5
5	1	Metal, copper, button, clothing, MM	97.59.5.1.5	FS#81/F5	1
5	1	Brick	97.59.3.5.14	FS#67/F3	2
5	1	Stoneware, body, Albany glazed	97.59.5.1.58	FS#82/F5	1
5	1	Fauna, bone, miscellaneous	97.59.3.5.12	FS#67/F3	21
5	1	Glass, bottle, base/body/neck, mold seam, aqua	97.59.3.5.5	FS#67/F3	1
5	1	Iron, slag	97.59.5.1.71	FS#80	11
5	1	Flora, wood	97.59.5.1.56	FS#82/F5	35
5	1	Metal, nail, unidentified with Fauna, bone	97.59.3.5.11	FS#67/F3	1
5	1	Fauna, bone, miscellaneous	97.59.5.1.51	FS#82/F5	8
5	1	Metal, copper, chain	97.59.3.5.13	FS#67/F3	1
5	1	Stoneware, hollow, Albany ext/int	97.59.5.1.33	FS#83	1
5	1	Tar, roofing	97.59.5.1.9	FS#78/F5/microdata	11
5	1	Fauna, bone, miscellaneous	97.59.5.1.12	FS#78/F5/microdata	11
5	1	Glass, bottle, body/base, embossed, aqua	97.59.3.5.6	FS#67/F3	1
5	1	Microdata debris	97.59.5.1.6	FS#78/F5/microdata	1
5	1	Iron, slag	97.59.5.1.22	FS#80	11
5	1	Mortar	97.59.5.1.19	FS#80	6
5	1	Plastic, rim/body	97.59.5.1.31	FS#83	8
5	1	Stoneware, hollow, clear lead glaze ext/Albany int	97.59.5.1.76	FS#80	2
5	1	Glass, window pane, aqua	97.59.3.5.4	FS#67/F3	1
5	1	Plaster	97.59.5.1.83	FS#98/F5 exterior	10
5	1	Coal slag	97.59.5.1.62	FS#99	8
5	1	Iron, slag	97.59.5.1.30	FS#83	7
5	1	Fauna, bone, miscellaneous	97.59.5.1.68	FS#80	1
5	1	Fauna, bone, miscellaneous	97.59.5.1.60	FS#99	1
5	1	Mortar	97.59.3.5.15	FS#67/F3	3
5	1	Slate	97.59.5.1.47	FS#82/F5	10
5	1	Glass, vase, bowl?, body/base, clear	97.59.3.5.7	FS#67/F3	1
5	1	Metal, nails, unidentified	97.59.3.5.9	FS#67/F3	10
5	1	Glass, window pane?, clear	97.59.5.1.40	FS#83	1
5	1	Glass, bowl, base/body, clear	97.59.3.5.3	FS#67/F3	1
5	1	Brick	97.59.5.1.23	FS#83	12
5	1	Flora, wood	97.59.5.1.61	FS#99	8
5	1	Whiteware, rim, transfer print/green, gold band	97.59.3.5.17	FS#67/F3	1
5	1	Stoneware, body, clear lead glaze ext/Bristol int	97.59.5.1.44	FS#83	1
5	1	Glass, window pane, aqua	97.59.5.1.87	FS#98/F5 exterior	1

Appendix I: Material Culture Recovered from the President Benjamin Harrison Home

UNIT	LEVEL	ID	NUMBER	COMMENTS	QTY
5	1	Metal, nail, wire	97.59.5.1.4	FS#81/F5	1
5	1	Metal, nail, miscellaneous	97.59.5.1.70	FS#80	10
5	1	Tar, roofing	97.59.5.1.79	FS#98/F5 exterior	28
5	1	Flora, wood	97.59.5.1.14	FS#78/F5/microdata	10
5	1	Glass, window pane, aqua	97.59.5.1.57	FS#82/F5	1
5	1	Whiteware, body or base?, MM, undecorated	97.59.5.1.42	FS#83	1
5	1	Brick	97.59.5.1.64	FS#80	3
5	1	Glass, window pane, aqua	97.59.5.1.73	FS#80	2
5	1	Metal, nails, miscellaneous	97.59.5.1.78	FS#98/F5 exterior	12
5	1	Glass, bottle, body or base?, frosted, clear	97.59.5.1.41	FS#83	1
5	1	Glass, window pane, aqua	97.59.5.1.69	FS#80	3
5	1	Metal, spike	97.59.3.5.10	FS#67/F3	1
5	1	Mortar	97.59.5.1.3	FS#81/F5	1
5	1	Slate	97.59.5.1.16	FS#78/F5/microdata	4
5	1	Glass, bottle, base/body, aqua	97.59.3.5.2	FS#67/F3	4
5	1	Metal, unidentified	97.59.5.1.32	FS#83	1
5	1	Glass, bottle, body, olive green	97.59.5.1.39	FS#83	1
5	1	Mortar	97.59.5.1.27	FS#83	12
5	1	Tar, roofing	97.59.5.1.53	FS#82/F5	3
5	1	Glass, bottle, body, embossed, brown	97.59.3.5.8	FS#67/F3	1
5	2	Fauna, shell	97.59.5.2.7	FS#102/F5	1
5	2	Flora, wood	97.59.5.2.2	FS#102/F5	>50
5	2	Brick, burned, handmade	97.59.5.2.3	FS#102/F5	2
5	2	Glass, window pane, aqua	97.59.5.2.5	FS#102/F5	9
5	2	Flora, wood	97.59.5.2.18	F5	7
5	2	Flora, wood/Mortar, burned	97.59.5.2.16	FS#102/F5	8
5	2	Metal, nails, miscellaneous	97.59.5.2.14	FS#102/F5	46
5	2	Metal, unidentified	97.59.5.2.13	FS#102/F5	3
5	2	Mortar, burned	97.59.5.2.11	FS#102/F5	18
5	2	Glass, window pane, aqua	97.59.5.2.25	FS#103/F5/microdata	1
5	2	Metal, copper, unidentified	97.59.5.2.8	FS#102/F5	1
5	2	Flora, wood, burned	97.59.5.2.12	FS#102/F5	14
5	2	Flora, wood	97.59.5.2.31	FS#100/F5	14
5	2	Metal, slag	97.59.5.2.27	FS#103/F5/microdata	6
5	2	Metal, nail, miscellaneous	97.59.5.2.17	FS#102/F5	1
5	2	Coal	97.59.5.2.26	FS#103/F5/microdata	10
5	2	Glass, bottle, clear and aqua	97.59.5.2.6	FS#102/F5	13
5	2	Brick, machine made	97.59.5.2.4	FS#102/F5	13
5	2	Coal	97.59.5.2.15	FS#102/F5	4
5	2	Coal slag	97.59.5.2.28	FS#103/F5/microdata	12
5	2	Mortar	97.59.5.2.21	FS#103/F5/microdata	28
5	2	Plaster	97.59.5.2.20	FS#103/F5/microdata	5
5	2	Flora, wood with metal, nail	97.59.5.2.29	FS#100/F5	1
5	2	Flora, wood	97.59.5.2.22	FS#103/F5/microdata	12
5	2	Brick	97.59.5.2.24	FS#103/F5/microdata	5
5	2	Flora, wood, burned	97.59.5.2.30	FS#100/F5	12
5	2	Mortar	97.59.5.2.10	FS#102/F5	114
5	2	Metal, lead slag, unidentified	97.59.5.2.9	FS#102/F5	11
5	2	Fauna, bone, miscellaneous	97.59.5.2.1	FS#102/F5	7
5	2	Microdata debris	97.59.5.2.19	FS#103/F5/microdata	-
5	2	Metal, nails, miscellaneous	97.59.5.2.23	FS#103/F5/microdata	2
5	3	Glass, container, body, glass	97.59.5.3.13	F5/FS#106	1
5	3	Tar	97.59.5.3.19	F5	1
5	3	Caulk	97.59.5.3.12	F5/FS#106	2
5	3	Metal, washer	97.59.5.3.16	F5/FS#106	1
5	3	Metal, nails, miscellaneous	97.59.5.3.2	F5/FS#106	51
5	3	Coal slag	97.59.5.3.7	F5/FS#106	19
5	3	Brick	97.59.5.3.3	F5/FS#106	19
5	3	Flora, wood	97.59.5.3.1	F5/FS#106	43
5	3	Glass, container, body, clear	97.59.5.3.22	F5	1

Appendix 1: Material Culture Recovered from the President Benjamin Harrison Home

<u>UNIT</u>	<u>LEVEL</u>	<u>ID</u>	<u>NUMBER</u>	<u>COMMENTS</u>	<u>QTY</u>
5	3	Flora, wood, burned	97.59.5.3.8	F5/FS#106	2
5	3	Coal	97.59.5.3.6	F5/FS#106	13
5	3	Mortar	97.59.5.3.4	F5/FS#106	32
5	3	Metal, slag	97.59.5.3.10	F5/FS#106	2
5	3	Porcelain, cup, body with handle, undecorated	97.59.5.3.17	F5/FS#106	1
5	3	Plastic, sheet, clear	97.59.5.3.9	F5/FS#106	1
5	3	Coal	97.59.5.3.21	F5	4
5	3	Glass, window pane, aqua	97.59.5.3.11	F5/FS#106	2
5	3	Stoneware, spout, Bristol glazed	97.59.5.3.15	F5/FS#106	1
5	3	Fauna, bone, miscellaneous	97.59.5.3.14	F5/FS#106	6
5	3	Metal, unidentified	97.59.5.3.20	F5	1
5	3	Flora, wood	97.59.5.3.18	F5	83
5	3	Glass, window pane, light green	97.59.5.3.5	F5/FS#106	4
5	4	Mortar	97.59.5.4.2	FS#111/F5	39
5	4	Metal, bell, sleigh?	97.59.5.4.8	FS#111/F5	1
5	4	Flora, wood	97.59.5.4.17	F5	98
5	4	Glass, window pane, clear	97.59.5.4.20	FS#?/F5	1
5	4	Coal slag	97.59.5.4.12	FS#111/F5	6
5	4	Brick	97.59.5.4.18	FS#?/F5	2
5	4	Fibers, unidentified	97.59.5.4.22	FS#?/F5	1
5	4	Metal, nails, miscellaneous/metal, unidentified	97.59.5.4.1	FS#111/F5	71
5	4	Slate	97.59.5.4.6	FS#111/F5	9
5	4	Glass, window pane, clear	97.59.5.4.14	FS#111/F5	2
5	4	Whiteware, body, undecorated	97.59.5.4.13	FS#111/F5	1
5	4	Metal, wire	97.59.5.4.7	FS#111/F5	3
5	4	Metal, slag	97.59.5.4.11	FS#111/F5	3
5	4	Metal, brass, unidentified	97.59.5.4.5	FS#111/F5	1
5	4	Plaster	97.59.5.4.21	FS#?/F5	4
5	4	Glass, window pane, aqua	97.59.5.4.15	FS#111/F5	2
5	4	Flora, wood	97.59.5.4.10	FS#111/F5	27
5	4	Fauna, bone, miscellaneous	97.59.5.4.4	FS#111/F5	12
5	4	Brick	97.59.5.4.3	FS#111/F5	27
5	4	Glass, container, body, clear	97.59.5.4.16	FS#111/F5	4
5	4	Fauna, bone, miscellaneous	97.59.5.4.19	FS#?/F5	1
5	4	Coal	97.59.5.4.9	FS#111/F5	5
5	5	Flora, wood	97.59.5.5.3	FS#112/F5	3
5	5	Mortar	97.59.5.5.5	FS#112/F5	8
5	5	Slate	97.59.5.5.2	FS#112/F5	2
5	5	Fauna, bone, miscellaneous	97.59.5.5.1	FS#112/F5	18
5	5	Metal, iron, slag	97.59.5.5.12	FS#112/F5	1
5	5	Metal, nail, miscellaneous	97.59.5.5.4	FS#112/F5	35
5	5	Coal slag and clinkers	97.59.5.5.9	FS#112/F5	4
5	5	Whiteware, plain, heat damaged	97.59.5.5.14	FS#112/F5	1
5	5	Redware, glazed, drain tile	97.59.5.5.7	FS#112/F5	2
5	5	Metal, wire	97.59.5.5.10	FS#112/F5	1
5	5	Glass, clear, unidentified	97.59.5.5.8	FS#112/F5	1
5	5	Metal, nails, miscellaneous/metal, unidentified	97.59.5.5.16	FS#110/F5	2
5	5	Fauna, bone, toe and claw	97.59.5.5.13	FS#112/F5	1
5	5	Coal	97.59.5.5.11	FS#112/F5	1
5	5	Metal, threaded metal rod in concrete	97.59.5.5.15	FS#112/F5	1
5	5	Flora, wood	97.59.5.5.17	FS#110/F5	1
5	5	Porcelain, rim, gold painted, heat damaged	97.59.5.5.6	FS#112/F5	1
5	6	Fauna, shell, button, 4-hole	97.59.5.6.13	FS#113/F5	1
5	6	Slate	97.59.5.6.8	FS#113/F5	3
5	6	Unidentified	97.59.5.6.11	FS#113/F5	2
5	6	Metal, nails, miscellaneous/metal, unidentified	97.59.5.6.1	FS#113/F5	58
5	6	Flora, wood	97.59.5.6.17	FS#113/F5	7
5	6	Glass, container, body, clear	97.59.5.6.6	FS#113/F5	1
5	6	Coal	97.59.5.6.5	FS#113/F5	4
5	6	Brick	97.59.5.6.3	FS#113/F5	15

Appendix 1: Material Culture Recovered from the President Benjamin Harrison Home

UNIT	LEVEL	ID	NUMBER	COMMENTS	QTY
5	6	Metal, wire	97.59.5.6.19	FS#113/F5	1
5	6	Metal, lead, unidentified	97.59.5.6.18	FS#113/F5	1
5	6	Slag	97.59.5.6.2	FS#113/F5	14
5	6	Plaster	97.59.5.6.14	FS#113/F5	6
5	6	Fauna, bone, miscellaneous	97.59.5.6.16	FS#113/F5	31
5	6	Glass, bottle/medicine, rectangular, embossed, clear	97.59.5.6.12	FS#113/F5	3
5	6	Redware, unglazed, flower pot	97.59.5.6.9	FS#113/F5	3
5	6	Metal, unidentified	97.59.5.6.7	FS#113/F5	1
5	6	Metal, brass, license plate? #337-5-1897	97.59.5.6.10	FS#113/F5	1
5	6	Glass, bulb, clear	97.59.5.6.4	FS#113/F5	2
5	6	Mortar	97.59.5.6.15	FS#113/F5	11
5	Surfac	Metal, nail, unidentified	97.59.5.0.2	---	1
5	Surfac	Slate	97.59.5.0.1	---	1
6	1	Caulk	97.59.6.1.6	FS#63	1
6	1	Glass, bottle, neck, amber	97.59.6.1.10	FS#63	3
6	1	Flora, wood	97.59.6.1.8	FS#63	1
6	1	Metal, nails, miscellaneous	97.59.6.1.1	FS#63	22
6	1	Coal	97.59.6.1.3	FS#63	1
6	1	Glass, container, body, aqua	97.59.6.1.12	FS#63	1
6	1	Coal slag	97.59.6.1.4	FS#63	5
6	1	Brick	97.59.6.1.9	FS#63	3
6	1	Unidentified, black	97.59.6.1.2	FS#63	1
6	1	Glass, bottle, body, amber	97.59.6.1.11	FS#63	3
6	1	Slate	97.59.6.1.7	FS#63	2
6	1	Fauna, bone, miscellaneous	97.59.6.1.5	FS#63	15
6	2	Brick	97.59.6.2.6	FS#115	4
6	2	Fauna, bone, miscellaneous	97.59.6.2.2	FS#115	2
6	2	Flora, wood	97.59.6.2.4	FS#115	2
6	2	Metal, unidentified	97.59.6.2.5	FS#115	1
6	2	Coal	97.59.6.2.3	FS#115	6
6	2	Microdata debris	97.59.6.2.1	FS#115	-
6	3	Coal slag	97.59.6.3.4	FS#97	5
6	3	Whiteware, rim/body/base, undecorated	97.59.6.3.3	FS#97	14
6	3	Metal, unidentified	97.59.6.3.6	---	1
6	3	Brick	97.59.6.3.1	FS#97	9
6	3	Metal, nails, miscellaneous/metal, unidentified	97.59.6.3.5	FS#97	33
6	3	Fauna, bone, miscellaneous	97.59.6.3.2	FS#97	1
6	4	Metal, unidentified	97.59.6.4.2	FS#96	9
6	4	Fauna, bone, miscellaneous	97.59.6.4.1	FS#96	1
General	Surfac	Stoneware, crock, rim	97.59.7.0.33	FS#4	1
General	Surfac	Metal, nails, miscellaneous	97.59.7.0.11	FS#26	2
General	Surfac	Glass, window pane, clear	97.59.7.0.36	FS#4	2
General	Surfac	Fauna, bone, miscellaneous	97.59.7.0.10	FS#26	2
General	Surfac	Metal, nails, miscellaneous	97.59.7.0.24	FS#4	30
General	Surfac	Mortar	97.59.7.0.34	FS#4	1
General	Surfac	Glass, bottle, body/base/kick, amber	97.59.7.0.25	FS#4	1
General	Surfac	Stoneware, body, glazed white int/blue ext, unid	97.59.7.0.37	FS#4	1
General	Surfac	Bone china, teacup, handle, gold leaf overglaze	97.59.7.0.1	FS#60	1
General	Surfac	Ceramic, insulator, white	97.59.7.0.32	FS#4	1
General	Surfac	Slate	97.59.7.0.27	FS#4	8
General	Surfac	Metal, unidentified, miscellaneous	97.59.7.0.29	FS#4	6
General	Surfac	Whiteware, soap dish?, body, undecorated	97.59.7.0.31	FS#4	1
General	Surfac	Glass, bottle, whole, square, embossed, amber	97.59.7.0.5	FS#27/north bay	1
General	Surfac	Whiteware, rim/body/footring, soap dish	97.59.7.0.9	FS#26	3
General	Surfac	Fauna, shell, oyster	97.59.7.0.18	---	3
General	Surfac	Metal, hollow, unidentified	97.59.7.0.16	FS#26	1
General	Surfac	Fauna, bone, miscellaneous	97.59.7.0.15	FS#26	8
General	Surfac	Flora, wood, burned	97.59.7.0.28	FS#4	1
General	Surfac	Glass, drinking glass, body/base, clear	97.59.7.0.22	---	1
General	Surfac	Flora, wood	97.59.7.0.19	---	4

Appendix 1: Material Culture Recovered from the President Benjamin Harrison Home

<u>UNIT</u>	<u>LEVEL</u>	<u>ID</u>	<u>NUMBER</u>	<u>COMMENTS</u>	<u>QTY</u>
General	Surfac	Whiteware, rim, hollow, hand painted, green/gold	97.59.7.0.35	FS#4	1
General	Surfac	Fauna, bone, miscellaneous	97.59.7.0.30	FS#4	4
General	Surfac	Glass, window pane, aqua	97.59.7.0.21	---	3
General	Surfac	Redware, unglazed, flower pot	97.59.7.0.6	FS#72	1
General	Surfac	Metal, nail, unidentified	97.59.7.0.7	FS#72	1
General	Surfac	Metal, nails, miscellaneous	97.59.7.0.2	FS#19	12
General	Surfac	Slate	97.59.7.0.20	---	4
General	Surfac	Glass, bottle, collar/lip, clear	97.59.7.0.14	FS#26	1
General	Surfac	Slate	97.59.7.0.8	FS#26	1
General	Surfac	Metal, nails, miscellaneous	97.59.7.0.17	FS#26	4
General	Surfac	Slate	97.59.7.0.3	FS#19	3
General	Surfac	Fauna, bone, miscellaneous	97.59.7.0.4	FS#19	17
General	Surfac	Brick	97.59.7.0.12	FS#26	1
General	Surfac	Fauna, shell, oyster	97.59.7.0.13	FS#26	1
General	Surfac	Fauna, shell, oyster	97.59.7.0.26	FS#4	1
General	Surfac	Glass, bottle, neck, olive green	97.59.7.0.23	---	1

Appendix 2: Summary of Artifact Dates

Appendix 2: Summary of Artifact Dates

<u>Artifact</u>	<u>Date Range</u>	<u>Citation</u>
Glass, amber	post-1865	Wagner et al. 1989:228
Glass, amethyst	1880-1925	Newman 1970:74
Glass, clear	post-1880	Newman 1970:74
Glass, milk	post-1870	Deiss 1981:76
Glass, olive	1815-1885	Newman 1970:74
Ironstone, undecorated	post-1840	Henry & Garrow 1982:466
Stoneware, Bristol glazed	post-1880	Ketchum 1991:11
Whiteware, blue transfer print	1830-1860	Lofstrom et al. 1982:14
Whiteware, flow blue transfer print	1844-1860	Lofstrom et al. 1982:9
Whiteware, green transfer print	ca. 1830-1850	Lofstrom et al. 1982:8, 9
Whiteware, undecorated	post-1840	Lofstrom et al. 1982:10