

## REGISTRATION FORM

High-Performance Schools Design Workshop  
January 29, 2009

To register by mail, send this completed form and payment to:

**Ball State Indianapolis Center**  
50 South Meridian Street  
Indianapolis, IN 46204

You may also register for this workshop online at  
[www.bsu.edu/indianapoliscenter](http://www.bsu.edu/indianapoliscenter).

Class size is limited. Registration and payment must be received by January 16, 2009.

Name: \_\_\_\_\_

Company: \_\_\_\_\_

Address: \_\_\_\_\_

City/State/Zip: \_\_\_\_\_

Phone: \_\_\_\_\_

E-mail: \_\_\_\_\_

### PAYMENT METHOD

Cost is \$199 per person. Includes breakfast and lunch.

Please select your payment method below.

**Payment enclosed.** Make checks payable to Ball State University.

**Invoice my company.** Name and address of company: \_\_\_\_\_

\_\_\_\_\_  
\_\_\_\_\_

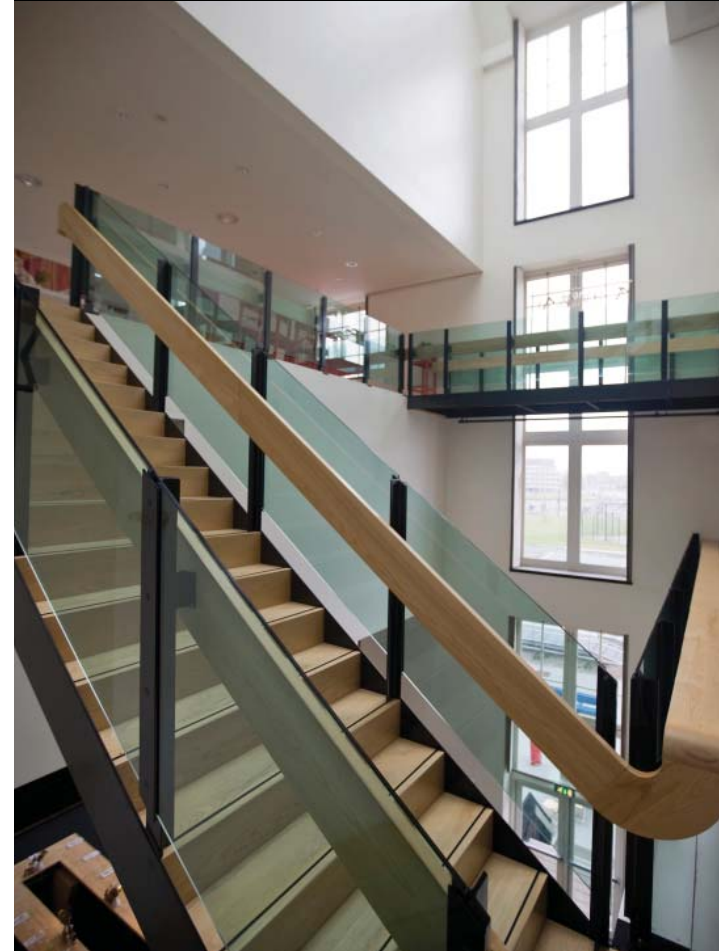
For credit card payments, please register online at  
[www.bsu.edu/indianapoliscenter](http://www.bsu.edu/indianapoliscenter).



## EXPAND YOUR EXPERTISE HIGH-PERFORMANCE SCHOOLS DESIGN WORKSHOP

**January 29, 2009**  
Kite Conference Center  
30 South Meridian Street  
Indianapolis, IN

## BALL STATE UNIVERSITY EDUCATION REDEFINED



[www.bsu.edu/indianapoliscenter](http://www.bsu.edu/indianapoliscenter)

## WORKSHOP INFORMATION

Learn more about procuring, designing, and building schools in Indiana that can improve student academic performance.

Review case studies of successful school design from around the country. Learn about the Indiana guidelines that will take effect in January 2009.

The workshop is designed for architects, engineers, school superintendents, school procurement officers, and building and construction managers.

## PRESENTATION SCHEDULE

- 8-8:45 a.m. **Registration and Welcome**  
*Continental Breakfast*
- 8:45-9:45 a.m. **Ways of Thinking**  
*Procurement, Delivery, and Integrated Design Process*
- 9:45-10:45 a.m. **Social Factors**  
*User Groups, Educational Mission, and Pattern Language*
- 10:45-11 a.m. **Break**
- 11 a.m.-12 p.m. **Environmental Factors**  
*IEQ: Thermal, Luminous, Acoustic*
- 12-1 p.m. **Lunch**
- 1-2 p.m. **Economic Factors**  
*First Cost, Life Cycle Cost, and Significant Metrics*
- 2-3 p.m. **State Mandates**  
*Governor's E.O., Indiana Law, and IDOE*
- 3-3:15 p.m. **Break**
- 3:15-4:15 p.m. **New Guidelines**  
*Needs, Recommendations, and Submittals*
- 4:15-5 p.m. **Resources**  
*WBDG, USGBC, CERES, and Others*

## MEET THE EXPERTS

Workshop leaders will present proven methods and strategies for achieving high-performance, resource-efficient sustainable school design.

■ **Walter Grondzik**, an ASHRAE and ASES Fellow, is an architectural engineer and professor in the Department of Architecture at Ball State University. Grondzik's teaching and research interests involve building environmental control systems, building performance, and energy/resource efficiency. Grondzik is past-president of the Architectural Research Centers Consortium and of the Society of Building Science Educators, and a current member of several ASHRAE technical and guideline committees. Grondzik is a LEED-AP, and co-author of *Mechanical and Electrical Equipment for Buildings* (10th ed.) and *The Green Studio Handbook*.

■ **Pamela Harwood** is a registered, practicing architect and an associate professor in the Department of Architecture. Her research and teaching interests are architectural design, history/theory, technology, and structures. Harwood has won numerous competition awards and been published in a host of ACSA proceedings.

■ **Robert J. Koester**, AIA, LEED AP, is a professor in the Department of Architecture at Ball State University and the founding director of the Center for Energy Research/Education/Service (CERES). He serves as chair of the university-level Council on the Environment (COTE), a clearinghouse for campus-wide sustainability. He also serves as co-chair of the Greening of the Campus Conferences, the 7th of which occurred September 2007. For the last four years he has collaborated with other organizations in offering workshops on "Design Strategies for Low-Energy, Sustainable, and Secure Buildings" throughout the country based on a curriculum model which he structured.

■ **Andrea Swartz** is a registered, practicing architect and an associate professor in the Department of Architecture. Her research and teaching interests are architectural design, introductory structures, materials technology, fabrication, drawing, photography, and woodworking/furniture design. She has been successful in winning multiple grants and has presented and published several papers.

■ **Roy Weaver** is a professor of curriculum in the Department of Educational Studies and dean of Teachers College at Ball State University—a position he has held for 14 years. In the Office of the Dean, he has provided leadership for a variety of innovations, including the creation of the Indiana Academy for Science, Mathematics and Humanities; sponsorship of more than 30 charter schools; and administration of the Electronic Field Trips program—live, interactive broadcasts from some of the nation's most noted museums, scientific agencies, national parks, and galleries to children and youth around the world. His scholarly interests have focused on long-range planning, school choice, curriculum innovation, and technology. Three years ago he abandoned his office and has worked virtually ever since.

■ **Gwendolen B. White** is an associate professor of accounting at Ball State University. Her research interests include auditor decision-making, ethics, environmental management accounting, and sustainability reporting. She has published articles in *Auditing: A Journal of Practice and Theory*, *International Journal of Auditing*, *Journal of Business Ethics*, *Journal of Accounting Education*, *Journal of Business and Psychology*, *Journal of Vocational Behavior*, *Cost Management*, *Journal of College Teaching and Learning*, *Journal of Business and Economic Research*, *Business and Society Review*, and *Management Accounting Quarterly*. She has presented at national and regional conventions of the American Accounting Association (AAA), Institute for Management Accountants (IMA), and the American Psychological Association (APA). In addition, she has presented at international conferences such as the Annual International Sustainable Development Research Conference, the European College Teaching and Learning Conference, and the Applied Business Research Conference. White is a member of the AAA and the IMA and serves on two national committees of the IMA. Also, she is a Certified Public Accountant.

# EXPERIENCE+SUCCESS